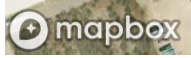
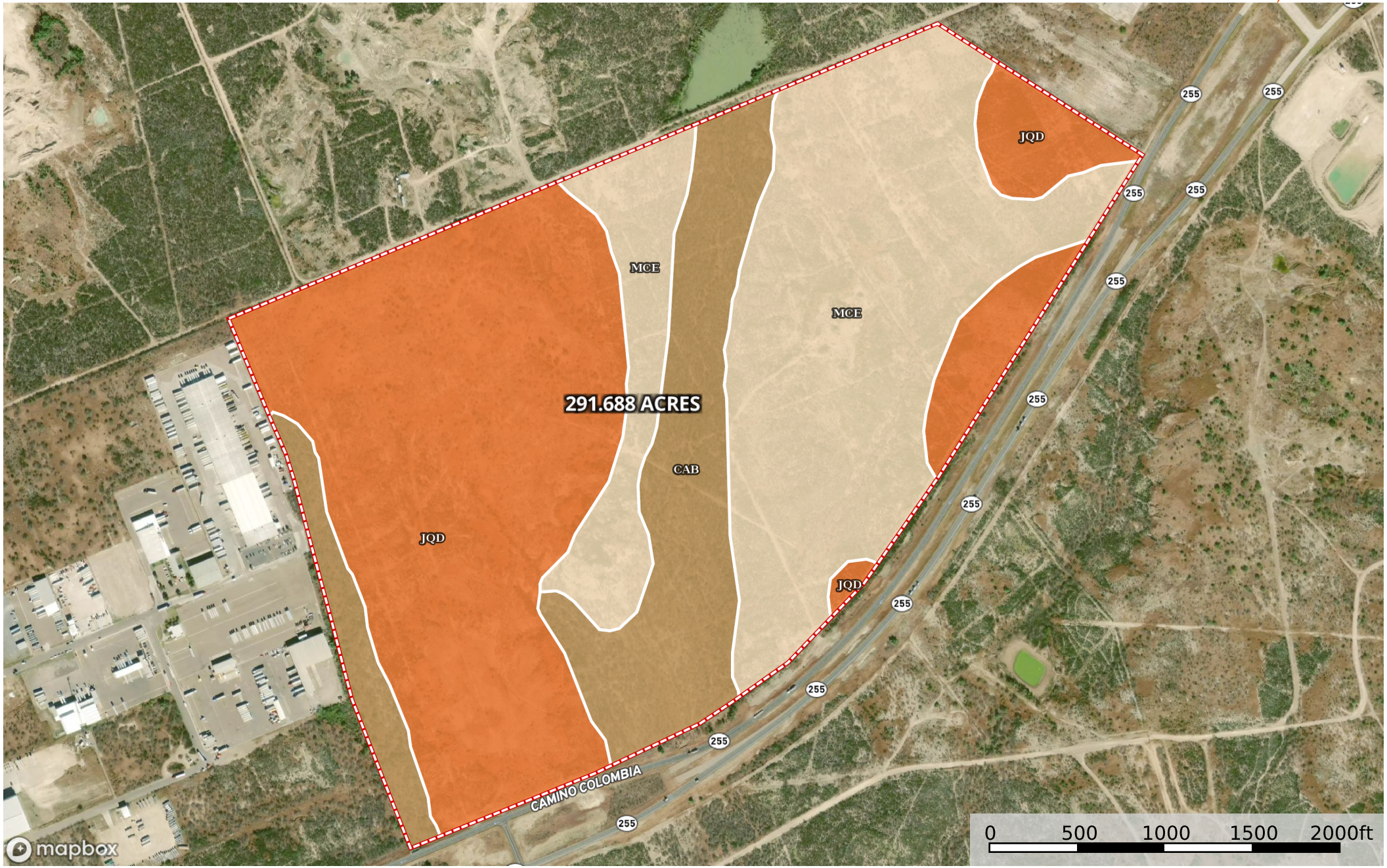


# Needmore Ranch-TR 7-Subject Tract

Webb County, Texas, 291 AC +/-



|  Boundary 303.76 ac

SOIL CODE	SOIL DESCRIPTION	ACRES	%	CPI	NCCPI	CAP
JQD	Jimenez-Quemado complex, undulating	133.03	43.79	0	10	7s
MCE	Maverick-Catarina complex, gently rolling	116.05	38.2	0	13	6e
CaB	Catarina clay, 0 to 2 percent slopes	54.68	18.0	0	14	6s
TOTALS		303.77(*)	100%	-	11.87	6.44









(\*) Total acres may differ in the second decimal compared to the sum of each acreage soil. This is due to a round error because we only show the acres of each soil with two decimal.

### Capability Legend

Increased Limitations and Hazards

Decreased Adaptability and Freedom of Choice Users

Land, Capability

								
	1	2	3	4	5	6	7	8
'Wild Life'	•	•	•	•	•	•	•	•
Forestry	•	•	•	•	•	•	•	
Limited	•	•	•	•	•	•	•	
Moderate	•	•	•	•	•	•		
Intense	•	•	•	•	•			
Limited	•	•	•	•				
Moderate	•	•	•					
Intense	•	•						
Very Intense	•							

### Grazing Cultivation

(c) climatic limitations (e) susceptibility to erosion

(s) soil limitations within the rooting zone (w) excess of water