

OFFICE SPACE **FOR LEASE**

**887** || trademark  
drive RENO, NEVADA

*your name here*

ARISTOCRAT

VGT

Class A Office Building

**LEED Gold Certified**

 **NevDex**  
PROPERTIES

**CBRE**

# property highlights



- ±53,437 SF Class A Office Building
- LEED Gold Certified
  - LEED certified buildings save money and resources and have a positive impact on the health of occupants, while promoting renewable, clean energy. (<http://www.usgbc.org/leed>)
- Two-story office building
- Multiple Tech Labs
- Data Center spaces
- Significant technology infrastructure
- Building signage
- Open floor plan
- Modern finishes
- 1 Back-up generator
- Elevator served
- Motion sensor lights throughout building
- Solar on the roof
- Built in 2010

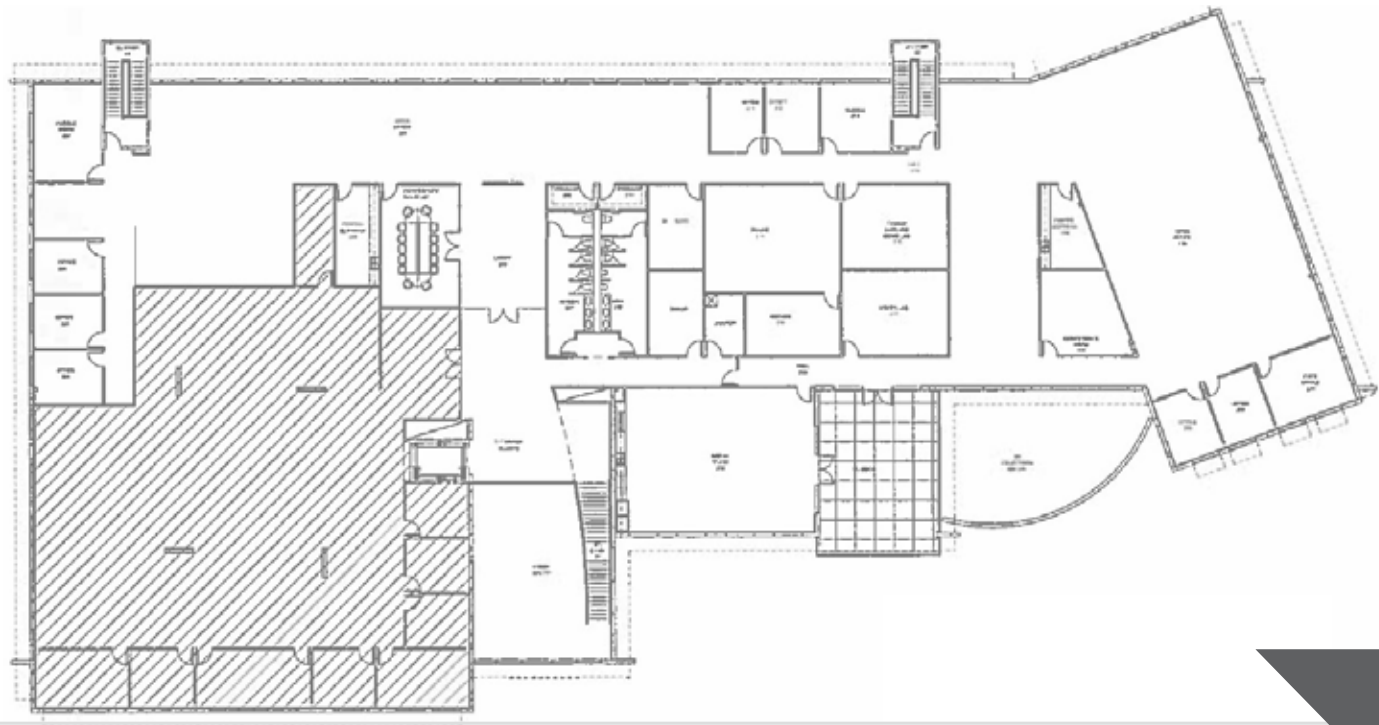


## suite details

- ±18,000 SF Available
- Lease Rate Negotiable
- Full Service

## floor plan

**SUITE 201**





# 887 trademark dr interior build-outs

VGT INTERIOR



## VGT INTERIOR



## interior build-outs KOCH





# NevDex

NevDex Properties is Reno's premier landlord for Class A office space. We develop, own and manage approximately 420,000 rentable square feet in Reno, Nevada, including the NevDex Office Park. By providing creative deal structures with flexible lease terms, expansion rights, and landlord sponsored improvement dollars, we offer the most professional and flexible leasing solutions that can help you thrive in today's rapidly changing work environment.

## Location

- Prime South Reno Location (South Meadows)
- Located near I-580, South Virginia Street, Double R Blvd. and South Meadows Pkwy.
- Close proximity to restaurants, retail, office and industrial parks along with residential neighborhoods

# NevDex portfolio



**9990 Double R Blvd., Reno**  
**20,549 SF**  
Class A Commercial Office  
and Medical Building



**10345 Professional Circle, Reno**  
**64,360 SF**  
Class A Office



**Professional Circle, Reno**  
**10,000 SF**  
Premier Restaurant and Retail Development



**887 Trademark Drive, Reno**  
**53,437 SF**  
Class A Commercial Office Building



**10615 Professional Circle, Reno**  
**46,810 SF**  
Class A Office Building



**5310 Kietzke Lane, Reno**  
**55,387 SF**  
Class A Office



**5340 Kietzke Lane, Reno**  
**55,917 SF**  
Class A Office



**5370 Kietzke Lane, Reno**  
**55,559 SF**  
Class A Office



**5390 Kietzke Lane, Reno**  
**65,917 SF**  
Class A Office

# 887 | trademark drive RENO, NEVADA

## EXCLUSIVELY LISTED BY:

**MATT GRIMES, CCIM**  
Senior Vice President  
+1 775 356 6290  
matt.grimes@cbre.com  
Lic. S.0072644

**DAVID WOODS, CCIM**  
Senior Vice President  
+1 775 321 4459  
david.woods@cbre.com  
Lic. S.0072655

**LEAHNA CHAPMAN**  
Senior Associate  
+1 775 823 6937  
leahna.chapman@cbre.com  
Lic. S.0183267

© 2025 CBRE, Inc. All rights reserved. This information has been obtained from sources believed reliable, but has not been verified for accuracy or completeness. You should conduct a careful, independent investigation of the property and verify all information. Any reliance on this information is solely at your own risk. CBRE and the CBRE logo are service marks of CBRE, Inc. All other marks displayed on this document are the property of their respective owners, and the use of such logos does not imply any affiliation with or endorsement of CBRE. Photos herein are the property of their respective owners. Use of these images without the express written consent of the owner is prohibited. PMStudio\_November2025



**CBRE**