



**6500 NEW VENTURE GEAR DRIVE
EAST SYRACUSE, NY 13057**

PROPERTY FOR LEASE




Property Details

- **287,000 SF Multi-Tenant Industrial Complex on 26.47 Acres, 325 car parking.**
- **Heavy Power, 30'+ Ceiling Height, Docks and Doors**
- **Immediate Proximity to NYS Thruway, Route 481**

Availability Details

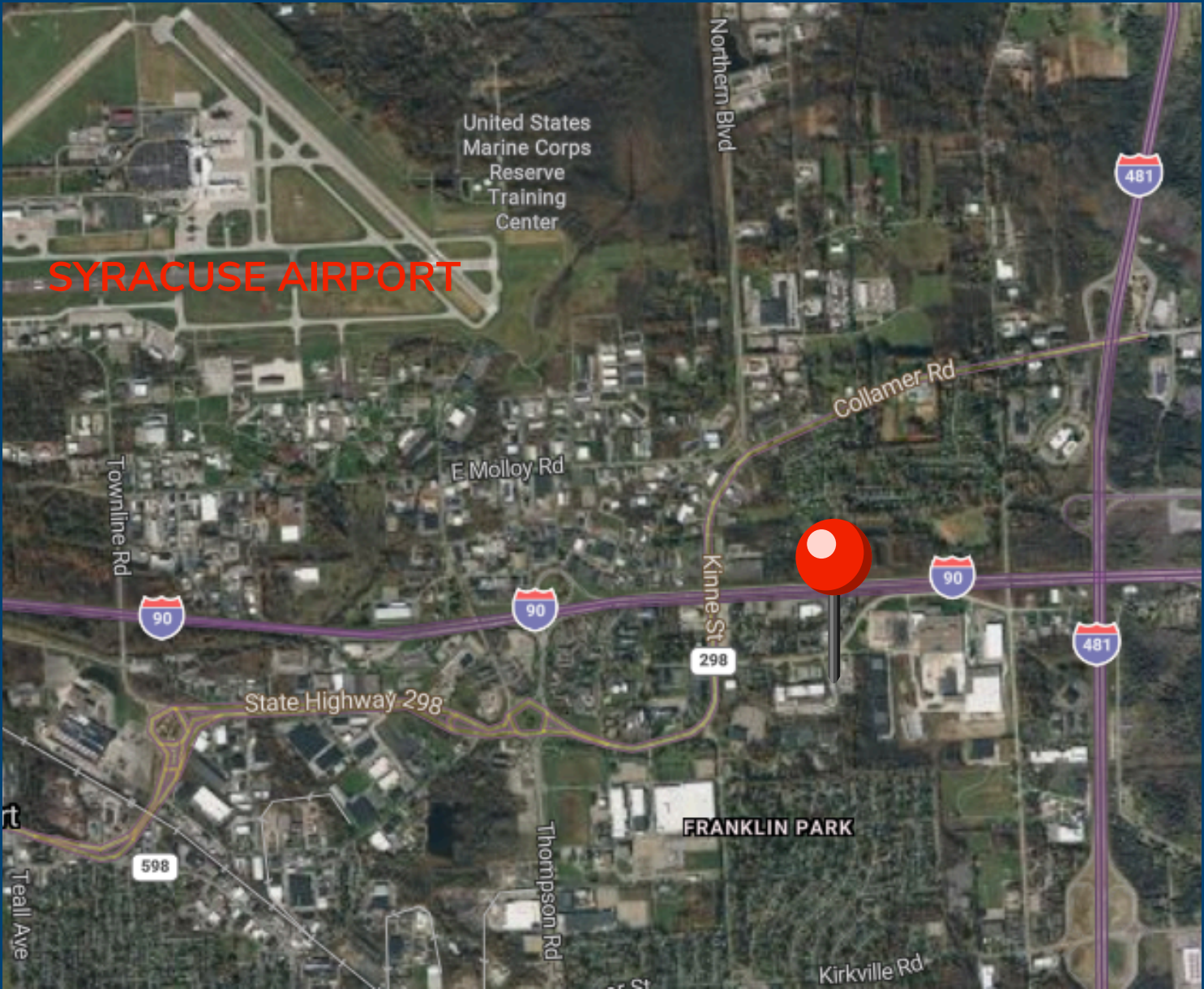
- **#1 - 25,475 SF. One Loading Dock, One OH Door. 30+ Clear Ceiling Height, Heavy Power**
- **#2 - 5,000 SF Former Office space. Can be used for storage, multiple small rooms (150-300 sq ft)**

 **315.299.6292**

 gzazzara@theiconcompanies.com
jmaxon@theiconcompanies.com

 theiconcompanies.com

 344 S. Warren St. Syracuse, NY 13202



315.299.6292



gzazzara@theiconcompanies.com



jmaxon@theiconcompanies.com



theiconcompanies.com



344 S. Warren St. Syracuse, NY 13202