

NOTES:
 The survey shown herein has been prepared as the result of an on the ground survey completed on March 2, 2022.
 The bearings shown herein are referenced to the Texas Coordinate System of 1983, Central Zone. Coordinates and distances shown are Surface Values. Combined Scale Factor is 1.0001147569.
 By scaling the surveyed tract onto the Federal Emergency Management Agency (FEMA) Flood Insurance Rate Map (FIRM) No. 48491C0489F, revised date December 20, 2019, a portion of the subject property is in ZONE X (unshaded), defined as areas determined to be outside the 0.2% annual chance floodplain and a portion of the subject property is in ZONE AE, defined as special flood hazard areas subject to flooding by the 1% annual chance flood with base flood elevations determined. The Surveyor makes no representation as to the accuracy of said FIRM or that it is the most current published flood map.
 The utility appearances shown herein include those visible at the time of the survey and are for general locative purposes only. In providing this boundary survey, no attempt has been made to obtain or show data concerning existence, size, depth, condition, capacity or location of any utility existing on or adjacent to the site, whether private, municipal or public owned.
 The buildings and other improvements shown herein represent the outline at ground level. The Surveyor has not located any underground buildings, overhead protrusions or improvements not obvious and located at ground level, unless otherwise noted.
 The elevations (and/or contours) shown herein are referenced to T.B.M. "A" (square cut in concrete, Elev.750.25', NAVD 88) and were determined as a result of an on the ground survey completed on March 2, 2022.
 Surveyor has not identified any geological or environmental conditions in connection with the subject property and Surveyor fully disclaims any and all responsibility related to issues or claims created thereto or resulting therefrom.

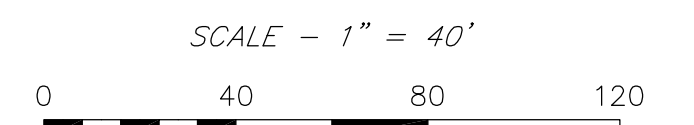
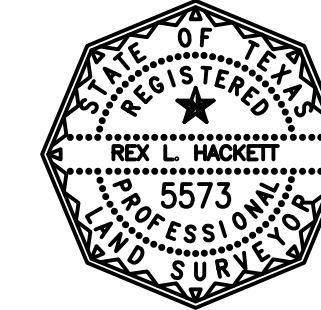
SURVEYOR'S CERTIFICATION

To Villas on Brushy Creek, LLC, a Texas limited liability company.

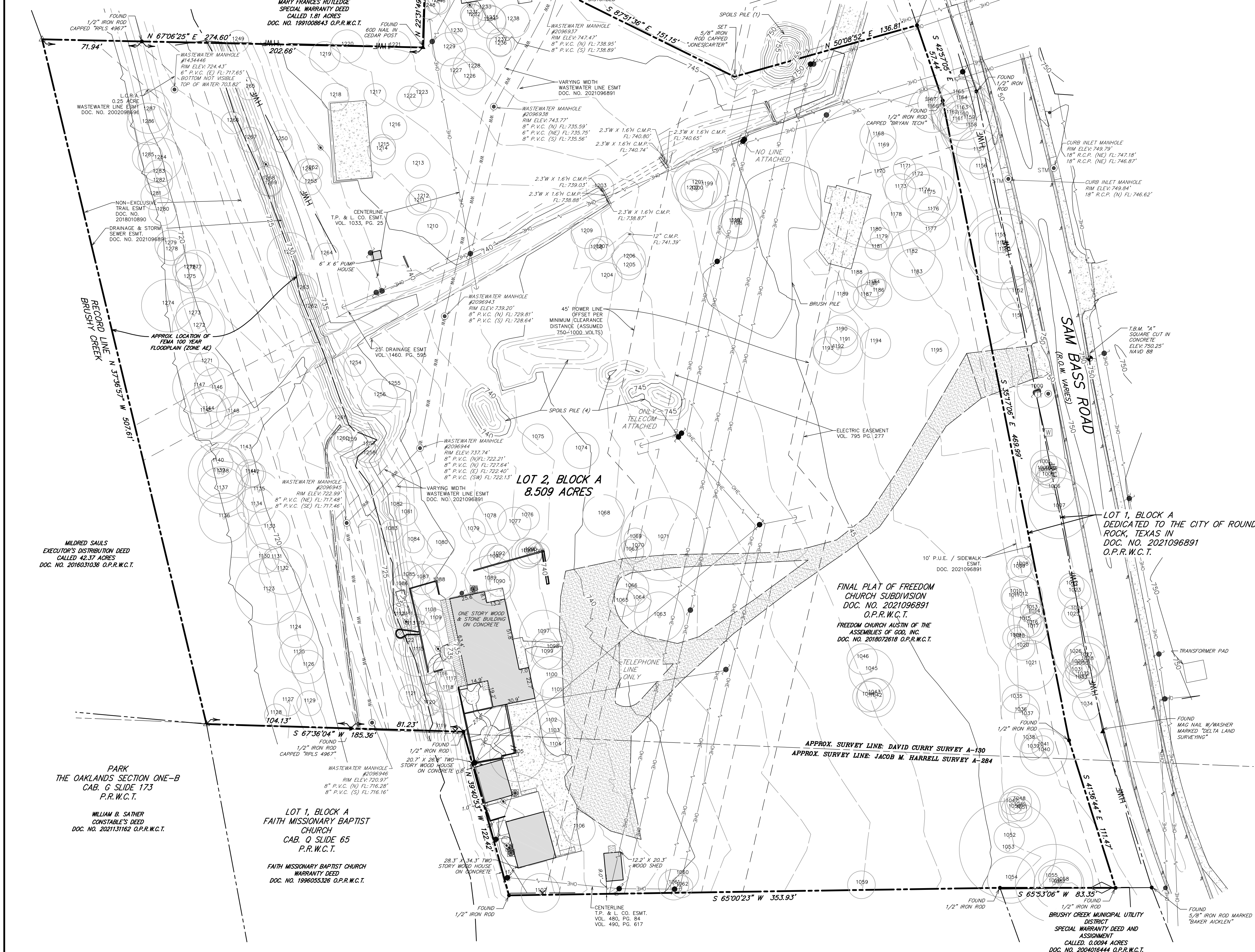
This survey substantially complies with the current Texas Society of Professional Surveyors Standards and Specifications for a Category II Condition VI Survey.

Drawing Date: March 23, 2022

Re
 Rex L. Hackett
 Registered Professional Land Surveyor No. 5573



VICINITY MAP - N.T.S.



TREE LIST

TAG NO.	DESCRIPTION	TAG NO.	DESCRIPTION
1000	14" Cedar Elm	1122	10" Cedar Elm
1001	10" Twin Live Oak (7",6")	1123	24" American Elm
1002	8" Live Oak	1124	13" Twin Cedar Elm (9",8")
1003	9" Live Oak	1125	14" Cedar Elm
1004	11" Twin Live Oak (8",6")	1126	12" Cedar Elm
1005	8" Twin Live Oak (6",5")	1127	10" Cedar Elm
1006	16" Cedar Elm	1128	8" Box Elder
1007	22" Twin Live Oak (16",13")	1129	9" Cedar Elm
1008	8" Cedar Elm	1130	11" Cedar Elm
1009	9" Cedar Elm	1131	9" Cedar Elm
1010	23" Multi-stem Live Oak	1132	17" Cedar Elm
1011	8" Live Oak	1133	15" American Elm
1012	15" Twin Live Oak (11",8")	1134	14" Cedar Elm
1013	8" Twin Cedar Elm (6",4")	1135	15" Twin Cedar Elm (13",4")
1014	9" Live Oak	1136	18" Twin American Elm (13",10")
1015	12" Twin Live Oak (10",4")	1137	17" Pecan
1016	9" Live Oak	1138	18" Sycamore
1017	11" Twin Live Oak (8",6")	1139	22" Twin Sycamore
1018	8" Live Oak	1140	11" American Elm
1019	9" Live Oak	1141	10" Cedar Elm
1020	9" Live Oak	1142	9" Live Oak
1021	18" Multi-stem Cedar Elm (11",7",7")	1143	12" Cedar Elm
1022	9" Live Oak	1144	13" Cedar Elm
1023	12" Live Oak	1145	19" Pecan
1024	9" Cedar Elm	1146	16" Cedar Elm
1025	8" Twin Live Oak (7",3")	1147	19" Pecan
1026	8" Live Oak	1148	12" Cedar Elm
1027	15" Live Oak	1151	11" Twin Cedar Elm (8",6")
1028	13" Live Oak	1152	12" Twin Cedar Elm (9",6")
1029	9" Live Oak	1153	27" Twin Live Oak (9",3")
1030	8" Live Oak	1154	27" Twin Live Oak (9",3")
1031	9" Live Oak	1155	11" Multi-stem Cedar Elm (7",6",3")
1032	10" Live Oak	1156	8" Cedar Elm
1033	13" Twin Live Oak (11",4")	1157	16" Twin Cedar Elm (11",11")
1034	10" Cedar Elm	1158	22" Twin Live Oak (19",7")
1035	10" Twin Cedar Elm (7",6")	1159	21" Live Oak
1036	14" Twin Cedar Elm (10",9")	1160	10" Cedar Elm
1037	9" Live Oak	1161	14" Live Oak
1038	10" Twin Cedar Elm (7",6")	1162	15" Live Oak
1039	8" Live Oak	1163	22" Twin Live Oak (18",8")
1040	17" Multi-stem Live Oak (9",9",8")	1164	17" Live Oak
1041	8" Live Oak	1165	12" Live Oak
1042	14" Live Oak	1166	17" Twin Live Oak (13",9")
1043	12" Live Oak	1167	9" Live Oak
1044	11" Live Oak	1168	13" Multi-stem Cedar Elm (7",7",3",2")
1045	16" Multi-stem Cedar Elm (8",8",8")	1169	10" Cedar Elm
1046	11" Twin Gum Burmelia (8",7")	1170	54" Multi-stem Live Oak (34",24",16")
1047	8" Live Oak	1171	8" Cedar Elm
1048	9" Live Oak	1172	9" Cedar Elm
1049	15" Twin Live Oak (11",8")	1173	11" Multi-stem Cedar Elm (7",5",3")
1050	9" Live Oak	1174	13" Twin Live Oak (12",3")
1051	8" Live Oak	1175	20" Twin Live Oak (15",11")
1052	11" Twin Cedar Elm (8",6")	1176	11" Multi-stem Cedar Elm (6",6",5")
1053	35" Multi-stem Live Oak (12",11",10",9",8",8")	1177	14" Multi-stem Cedar Elm (8",7",6")
1054	17" Twin Cedar Elm (12",10")	1178	11" Cedar Elm
1055	9" Live Oak	1179	8" Cedar Elm
1056	28" Multi-stem Live Oak (15",14",13")	1180	10" Twin Cedar Elm (8",5")
1057	18" Twin Live Oak (13",10")	1181	8" Cedar Elm
1058	14" Twin Live Oak (10",8")	1182	17" Multi-stem Cedar Elm (10",9",5")
1059	10" Cedar Elm	1183	19" Multi-stem Cedar Elm (11",9",8")
1060	10" Cedar Elm	1184	9" Twin Cedar Elm
1061	11" Cedar Elm	1185	10" Cedar Elm
1062	8" Cedar Elm	1186	10" Cedar Elm
1063	18" Multi-stem Cedar Elm (10",10",7")	1187	9" Twin Cedar Elm (7",5")
1064	9" Cedar Elm	1188	9" Cedar Elm
1065	10" Cedar Elm	1189	12" Multi-stem Cedar Elm (7",6",6")
1066	15" Cedar Elm	1190	12" Live Oak
1067	9" Durand Oak	1191	10" Live Oak
1068	15" Cedar Elm	1192	18" Twin Live Oak (12",12")
1069	8" Cedar Elm	1193	10" Live Oak
1070	10" Cedar Elm	1194	11" Cedar Elm
1071	30" Multi-stem Cedar Elm (12",11",10",8",7")	1195	9" Cedar Elm
1072	13" Twin Cedar Elm (9",8")	1196	11" Live Oak
1073	11" Cedar Elm	1197	11" Live Oak
1074	11" Cedar Elm	1198	10" Live Oak
1075	11" Cedar Elm	1199	16" Twin Live Oak (11",10")
1076	12" Cedar Elm	1200	15" Live Oak
1077	9" Multi-stem Cedar Elm (5",4",4")	1201	18" Twin Live Oak (13",10")
1078	10" Twin Cedar Elm (7",6")	1202	8" Gum Burmelia
1079	10" Cedar Elm	1203	10" Sycamore
1080	10" Twin Cedar Elm (7",6")	1204	11" Twin Durand Oak (8",7")
1081	8" Cedar Elm	1205	9" Cedar Elm
1082	10" Twin Durand Oak (7",7")	1206	12" Twin Durand Oak (9",6")
1083	8" Cedar Elm	1207	9" Cedar Elm
1084	8" Cedar Elm	1208	8" Cedar Elm
1085	11" Twin Cedar Elm (9",5")	1209	11" Cedar Elm
1086	8" Cedar Elm	1210	11" Twin Durand Oak (8",6")
1087	11" Twin Cedar Elm (8",6")	1211	9" Cedar Elm
1088	13" Twin Cedar Elm (9",8")	1212	10" Cedar Elm
1089	18" Twin Cedar Elm (14",8")	1213	9" Twin Cedar Elm (6",6")
1090	9" Cedar Elm	1214	10" Cedar Elm
1091	15" Cedar Elm	1215	9" Cedar Elm
1092	8" Cedar Elm	1216	9" Cedar Elm
1093	11" Cedar Elm	1217	8" Cedar Elm
1094	10" Cedar Elm	1218	8" Cedar Elm
1095	9" Cedar Elm	1219	11" Cedar Elm
1096	8" Cedar Elm	1220	12" Cedar Elm
1097	17" Twin Cedar Elm (13",8")	1221	12" Cedar Elm
1098	15" Cedar Elm	1222	12" Cedar Elm
1099	11" Cedar Elm	1223	9" Cedar Elm
1100	15" Cedar Elm	1224	8" Cedar Elm
1101	11" Cedar Elm	1225	10" Cedar Elm
1102	8" Cedar Elm	1226	12" Cedar Elm
1103	10" Cedar Elm	1227	11" Twin Cedar Elm (8",6")
1104	11" Cedar Elm	1228	15" Twin Cedar Elm (11",8")
1105	20" Twin Cedar Elm (14",13")	1229	12" Cedar Elm
1106	12" Cedar Elm	1230	8" Cedar Elm
1107	14" Cedar Elm	1231	8" Cedar Elm
1108	9" Cedar Elm	1232	9" Cedar Elm
1109	8" Cedar Elm	1233	8" Cedar Elm
1110	8" Cedar Elm	1234	12" Cedar Elm
1111	10" Cedar Elm	1235	10" Cedar Elm
1112	9" Cedar Elm	1236	8" Cedar Elm
1113	9" Twin Cedar Elm (8",3")	1237	10" Cedar Elm
1114	18" Cedar Elm	1238	12" Twin Cedar Elm (8",8")
1115	11" Cedar Elm	1239	13" Cedar Elm
1116	8" Cedar Elm	1240	9" Cedar Elm
1117	8" Cedar Elm	1241	14" Cedar Elm
1118	14" Cedar Elm	1242	13" Twin Cedar Elm (9",8")
1119	12" Cedar Elm	1243	11" Cedar Elm
1120	8" Cedar Elm		
1121	8" Cedar Elm		

LEGEND

- IRON ROD FOUND
- 5/8" IRON ROD SET W/CAP
- ▲ STAMPED "JONES CARTER"
- ▲ NAIL FOUND
- ▲ COTTON GIN SPINDLE FOUND
- ▲ CALCULATED POINT
- ▲ SIGN
- ▲ AC UNIT
- ▲ WATER VALVE
- ▲ WASTEWATER MANHOLE
- ▲ WASTEWATER CLEANOUT
- ▲ TELEPHONE MANHOLE
- ▲ TELEPHONE PEDESTAL
- ▲ UTILITY POLE
- ▲ GUY ANCHOR
- ▲ OVERHEAD UTILITIES
- ▲ BARBED WIRE FENCE
- ▲ WOOD FENCE
- ▲ HOG WIRE FENCE
- ▲ METAL FENCE
- ▲ EDGE OF ASPHALT
- ▲ AREA OF CONCRETE
- ▲ AREA OF GRAVEL
- ▲ AREA OF WOOD
- ▲ WALLS
- ▲ SCHEDULE B ITEM NO.
- ▲ P.R.W.C.T.
- ▲ PLAT RECORDS OF
- ▲ WILLIAMSON COUNTY, TEXAS
- ▲ OFFICIAL PUBLIC RECORDS OF
- ▲ WILLIAMSON COUNTY, TEXAS

LEGAL DESCRIPTION:
 LOT 2, BLOCK A, FINAL PLAT OF FREEDOM CHURCH SUBDIVISION, A SUBDIVISION TO THE CITY OF ROUND ROCK, WILLIAMSON COUNTY, TEXAS, ACCORDING TO THE MAP OR PLAT THEREOF RECORDED IN COUNTY CLERK'S FILE NO. 2021096891, OFFICIAL PUBLIC RECORDS, WILLIAMSON COUNTY, TEXAS.

TREE AND TOPOGRAPHIC SURVEY
 BEING
8.509 ACRES
 OUT OF THE
D. CURRY SURVEY, A-130, J.M. HARRELL SURVEY, A-284
 CITY OF ROUND ROCK, WILLIAMSON COUNTY, TEXAS
 MARCH 2022

