



BURGESS  
PROPERTIES

# 284 EASTERN AVENUE

CHELSEA, MASSACHUSETTS



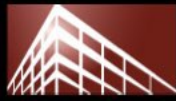
LAST MILE AREA INDUSTRIAL. SILVER LINE ACCESSIBLE.

As Exclusive Agent, Burgess Properties, LLC is pleased to present the opportunity to purchase or lease this rare **LAST MILE AREA +/- 3.7 ACRE** industrial asset.

Steve Nohrden  
President  
[Steve@BurgessProperties.com](mailto:Steve@BurgessProperties.com)

[www.BurgessProperties.com](http://www.BurgessProperties.com)

Information contained herein is from sources deemed reliable, however no guarantee is provided as to the accuracy thereof. All statements and conditions contained herein are subject to errors, omissions, prior sale, removal from the market, and subject to change without notice. Information contained herein may be confidential and any use, distribution, copying or disclosure by anyone unauthorized is strictly prohibited.



LAST MILE AREA. EXCEPTIONAL LOCATION.



*bostonlogan*

SEAPORT

FINANCIAL DISTRICT

EAST BOSTON

CHARLESTOWN

1A

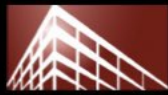
MBTA SILVER LINE

**284** EASTERN AVENUE

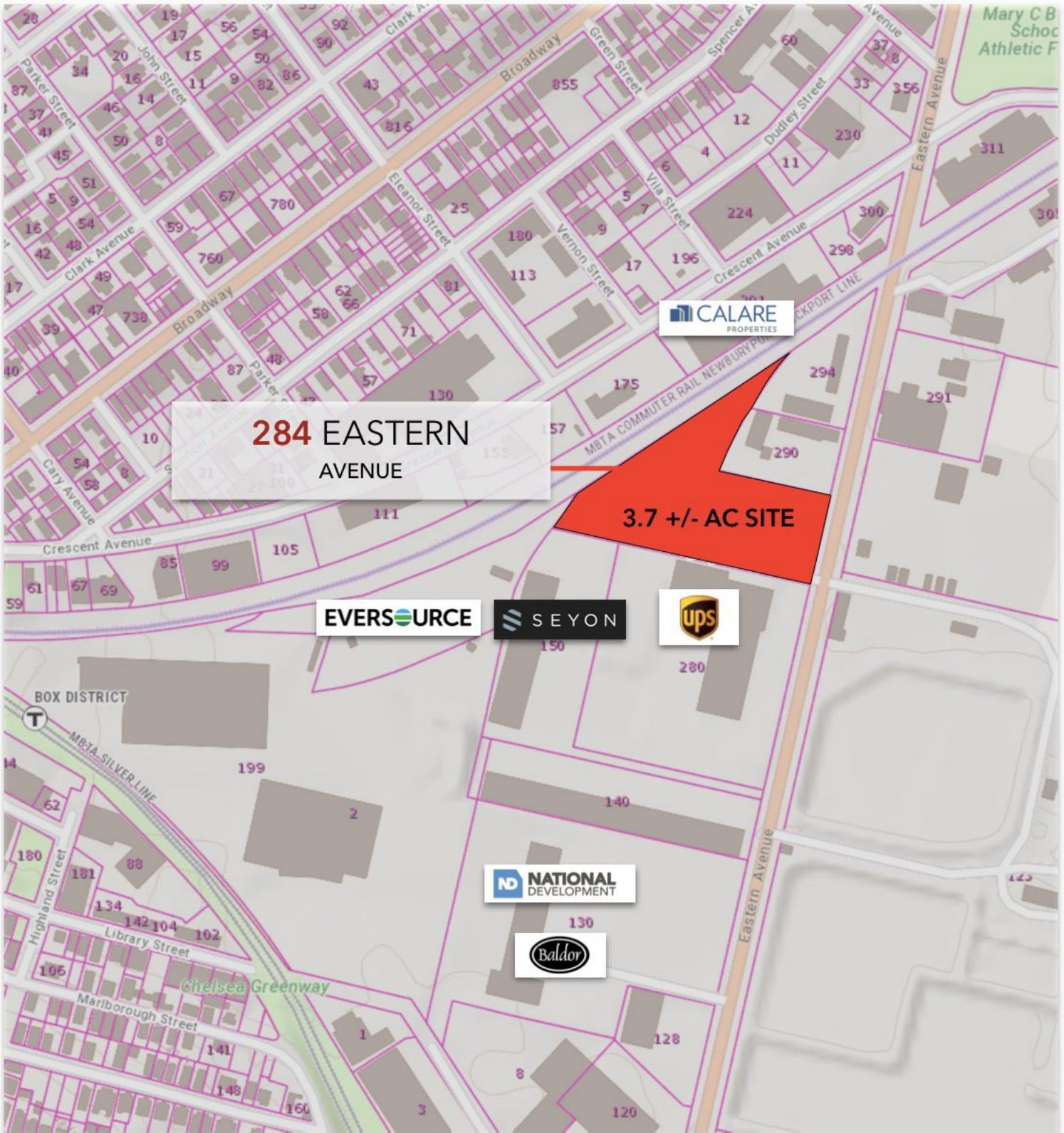
CHELSEA

EVERETT

1



MASSGIS MAP





## PROPERTY OVERVIEW

**Building Area** 28,000 SF +/- Total: 26,000 SF +/- in Main Building and 2,000 SF +/- in outbuilding

**Lot Area** 3.71 AC +/- (161,361 SF +/-)

**Ceiling Height** Up to 26' +/- Clear

**Drive-In Doors** Six (6) in main building, Two (2) in outbuilding

**Loading Docks** Five (5)

**Environmental** 21E on file

**MBTA Proximity** Short walk to MBTA Silver Line

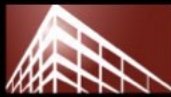
**HVAC** Oil-fired suspended gas units in warehouse. Air-conditioned offices

**Zoning** Industrial. Airport Related Overlay District (AROD)

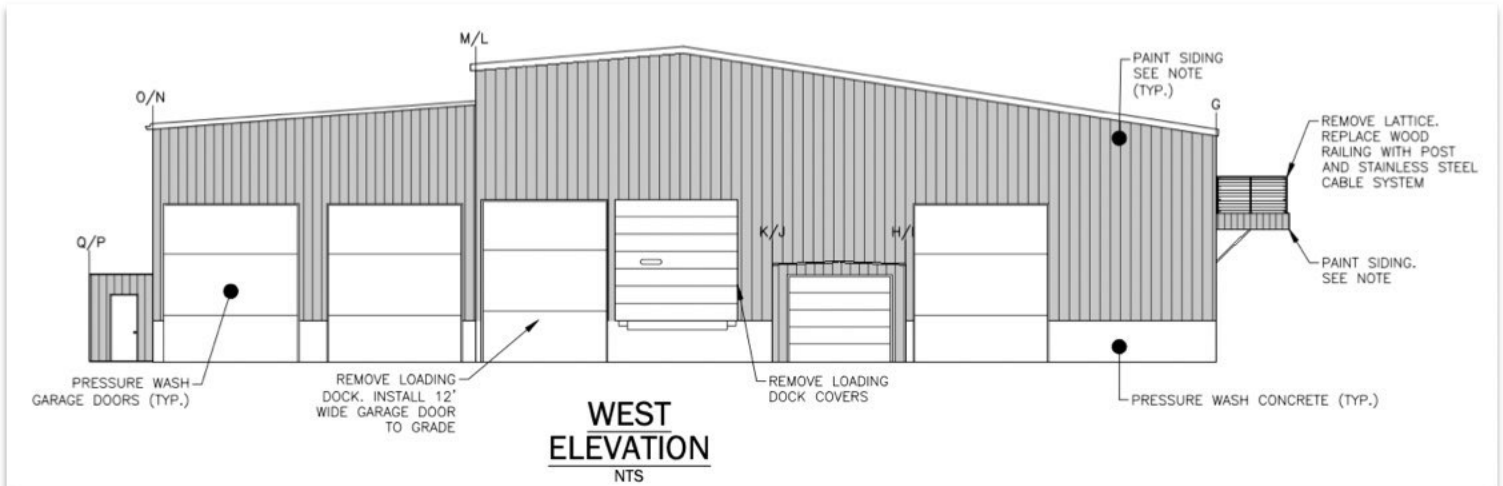
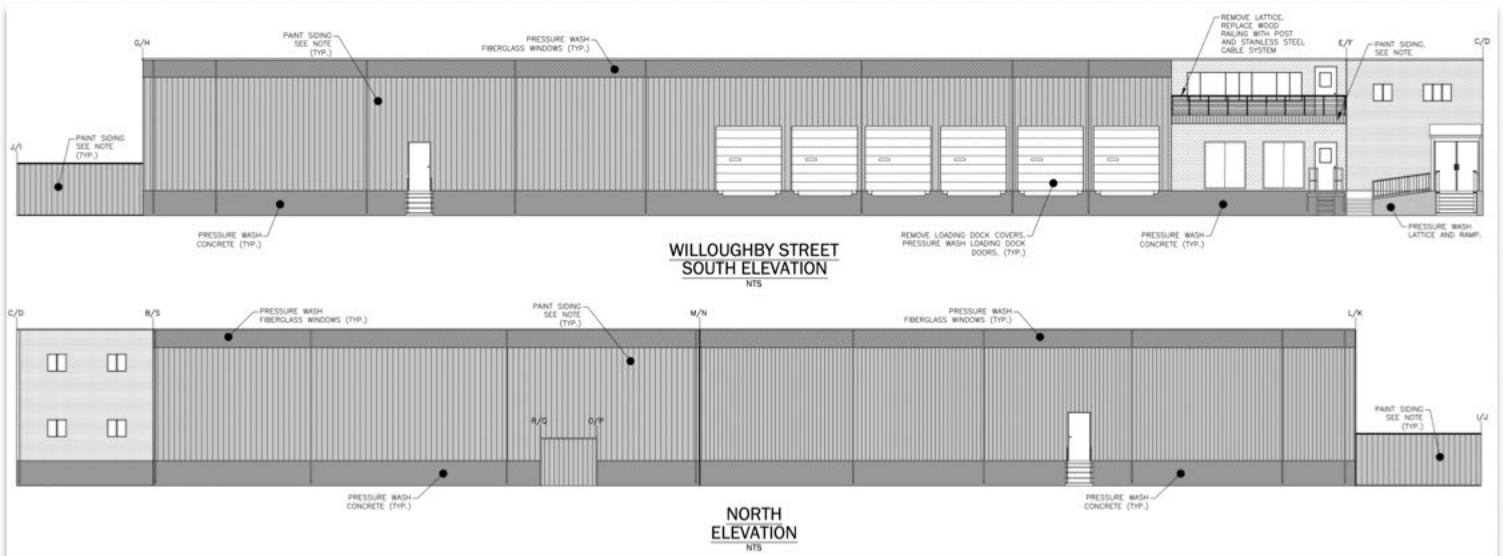
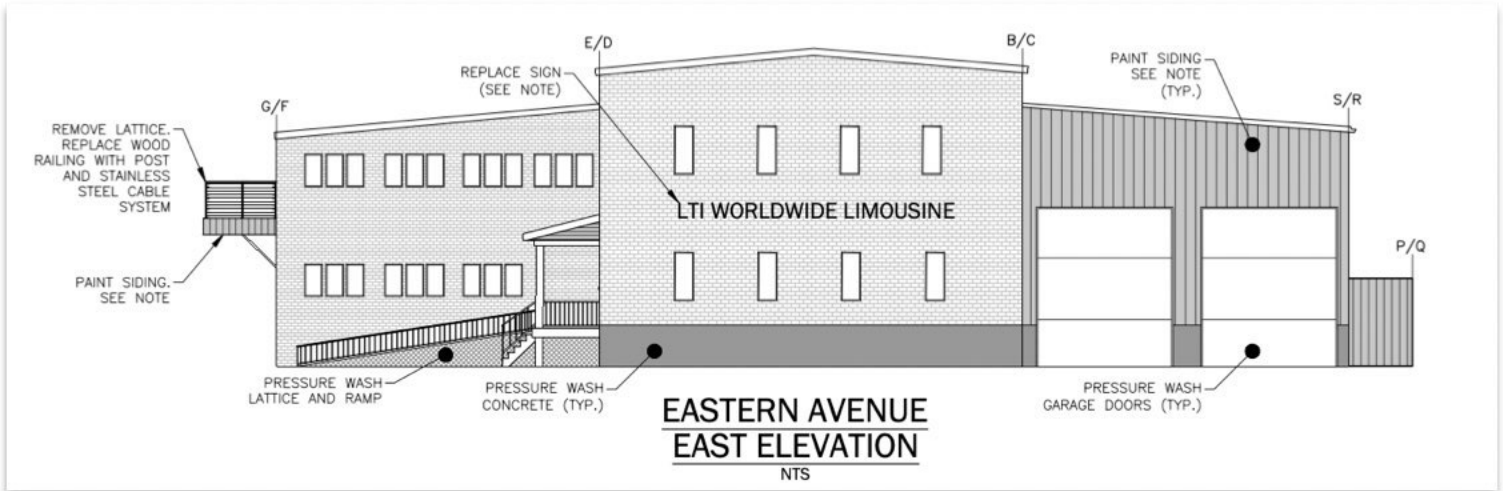
**Environmental** 21E on file

**Solar** 225 panels





# BUILDING ELEVATIONS





FRONT EXTERIOR



FRONT INTERIOR



REAR EXTERIOR



REAR INTERIOR



SIDE EXTERIOR



OUTBUILDING