



FOR SUBLEASE – 8,050 SF

100 E State Street
Albion, PA 16401

Property Highlights

- 8,050 SF Available Immediately
- Stand-Alone Retail Building
- 22 Parking Spaces
- Frontage: 70' on Canal Street & 57' E State Street
- Dedicated Pylon Sign on Property



For information, please contact:

Martin Perry, CCIM
Senior Managing Director
t 412-310-2315
Martin.perry@nmrk.com

Jessica Spazok
Managing Director
t 412-498-0398
Jessica.spazok@nmrk.com

210 Sixth Avenue, Suite 600
Pittsburgh, PA 15222
412-281-0100

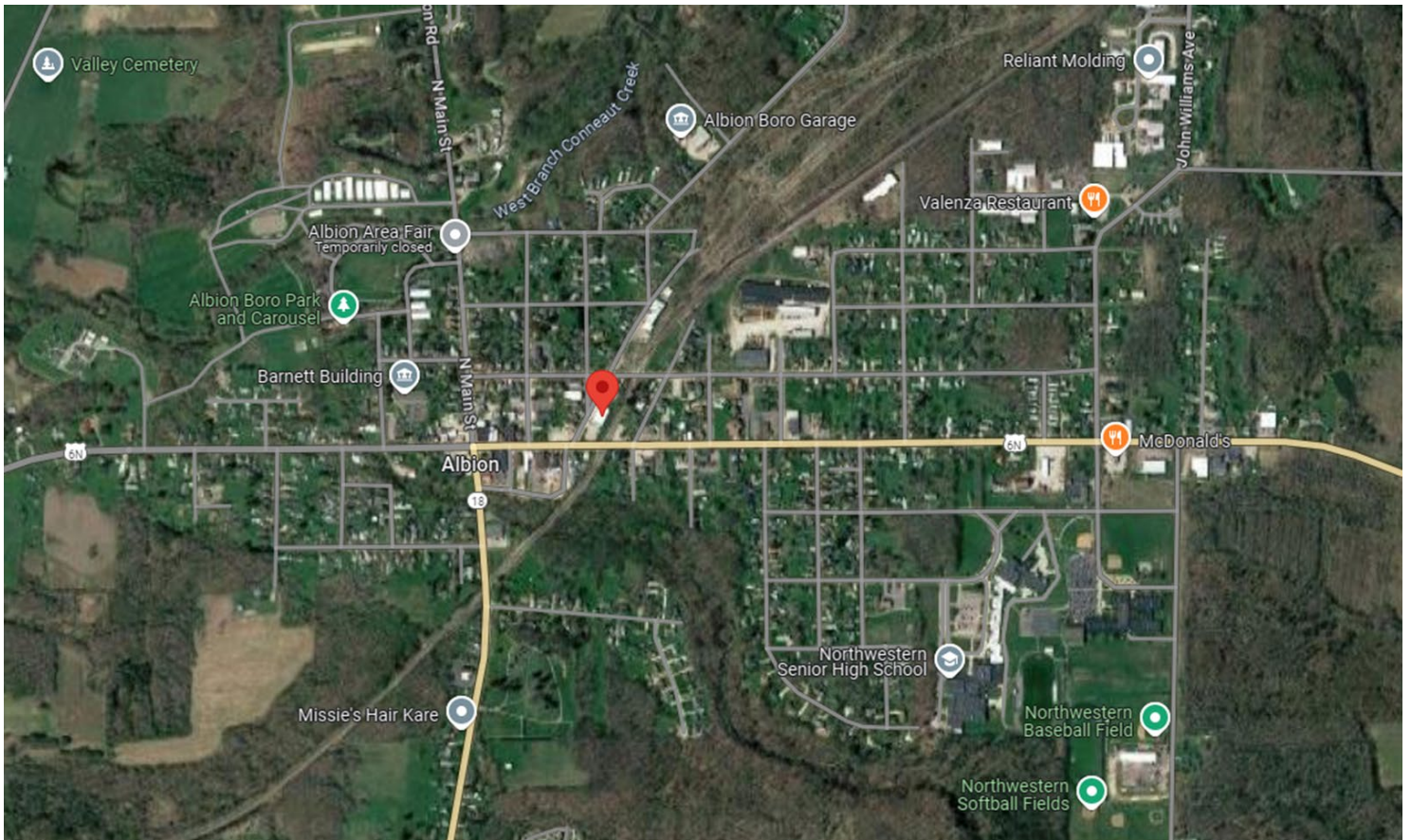
nmrk.com

NEWMARK

Licensed in Pennsylvania as Newmark Real Estate

The information contained herein has been obtained from sources deemed reliable but has not been verified and no guarantee, warranty or representation, either express or implied, is made with respect to such information. Terms of sale or lease and availability are subject to change or withdrawal without notice.

100 E. State Street, Albion, PA 16401



Demographics	3 Mile	5 Miles	7 Miles
Population	5,917	7,953	29,334
Households	1,468	2,260	10,413
Average HH Income	\$66,250	\$66,654	\$65,992

CONTACT

Martin Perry, CCIM
Senior Managing Director
t 412-310-2315
Martin.perry@nmrk.com

Jessica Spazok
Managing Director
t 412-498-0398
Jessica.spazok@nmrk.com

