

For Sale/Lease

Office/Warehouse

29,342 SF



2701 Delaware Ave

Des Moines, Iowa 50317

Property Highlights

- For Sale/Lease
- Office/Warehouse
- Sale/Lease Price: Inquire for Pricing
- Building Size: 29,342 SF; built in 1963
- Lot Size: 2.296 Acres
- Wet Sprinkler System
- One Dock & Two Drive In Doors
- Power: 3,000 amps
- Zoning: I1 - Industrial District

Property Description

Discover a prime investment opportunity in the heart of the Des Moines area with this impressive 29,342 SF retail building. Built in 1963, this property boasts a spacious 2.296-acre land parcel and is zoned I1, offering versatile potential for a range of office and commercial uses. With a wet sprinkler system, 1 dock, and attractive lease terms including a negotiable sale price and lease. This property presents an enticing prospect for office and office building investors looking to capitalize on a strategic location and exceptional amenities.

OFFERING SUMMARY

Sale/Lease Rate	Inquire for Pricing
Lot Size	2.296 Acres
Building Size	29,342 SF

DEMOGRAPHICS

Stats	Population	Avg. HH Income
1 Mile	8,850	\$74,570
3 Miles	69,896	\$66,170
5 Miles	157,651	\$76,018

For more information

Kevin Crowley, SIOR

C: 515 991 7000

kcrowley@iowarealtycommercial.com | IA #B17147000

Doug Pfeil

C: 515 419 9546

dpfeil@iowarealtycommercial.com

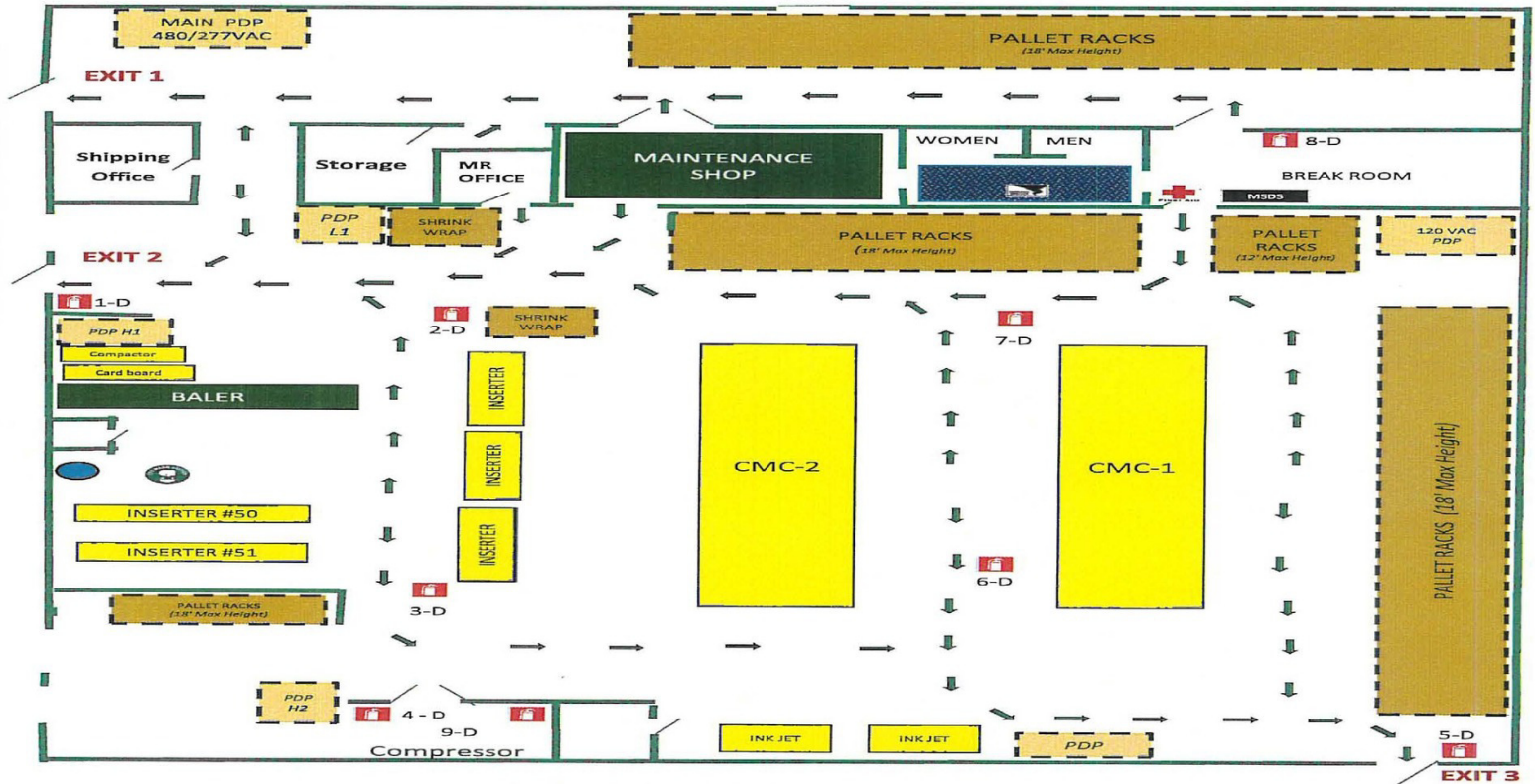
For Sale

Industrial Property

29,342 SF



Floor Plan



Location Maps

