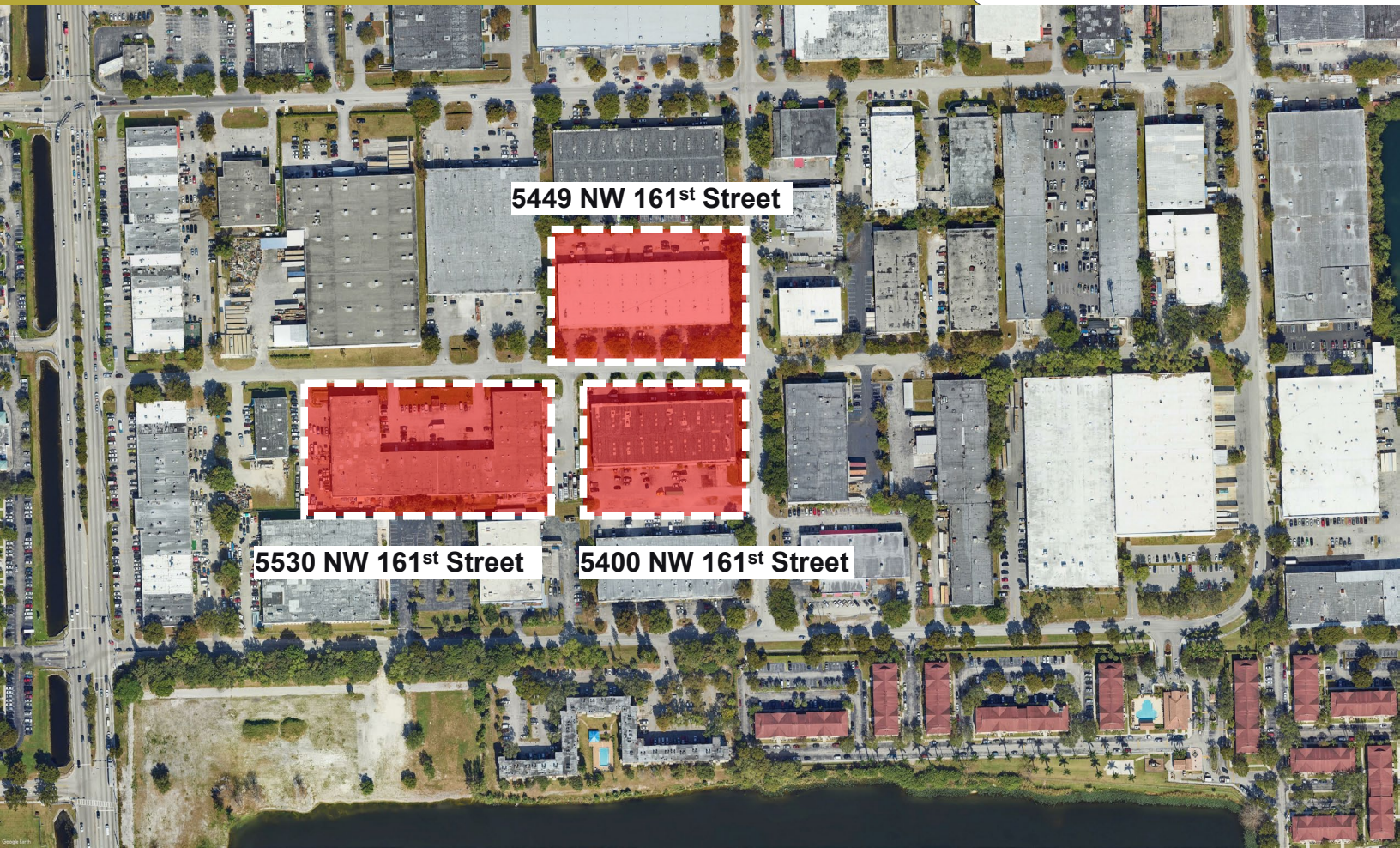


# For Lease



## Palmetto Lakes Industrial Park

5401-5632 NW 161<sup>st</sup> Street, Miami, FL

- Space Sizes from 3,072 sf.
- Dock or Street level

*For more information or to schedule a tour please contact:*

Will Falero, SIOR  
[will.falero@proindustrialre.com](mailto:will.falero@proindustrialre.com)  
Mobile +1 786 389-3236

Owned and Managed by:



# FOR LEASE

## 3 – Buildings in Palmetto Lakes Industrial Park

	5400 NW 161 <sup>st</sup> Street Miami, FL	5449 NW 161 <sup>st</sup> Street Miami, FL	5530 NW 161 <sup>st</sup> Street Miami, FL
Building Size	44,800 SF	55,149 SF	74,496 SF
Land	98,881 SF	116,305 SF	174,205 SF
Zoning	IU-1-Industrial, light manufacturing	IU-1-Industrial, light manufacturing	IU-1-Industrial, light manufacturing
Clear Height	20'	20"	20'



*Information regarding this property is for informational purposes only. Pro Industrial, LLC does not make any warranty or representation as to the accuracy provided.*

**AVAILABLE UNITS WITHIN THE 3-BUILDING PORTFOLIO**

Address	Size/SF	Loading	Office/SF	Asking Rate	Available
5405 NW 161 <sup>st</sup> Street	4,480	2 Street level	500	\$19.00 NNN	Immediate
5437 NW 161 <sup>st</sup> Street	8,960	2 Dock wells	890	\$18.00 NNN	Immediate
5450 NW 161 <sup>st</sup> Street	8,960	3 Street, 1 Dock well	1,800	\$18.00 NNN	Immediate
5470-5480 NW 161 <sup>st</sup> St	8,960	4 Street level	1,000	\$18.00 NNN	Immediate
5512 NW 161 <sup>st</sup> Street	3,492	2 Street level	500	\$21.00 NNN	Immediate
5626 NW 161 <sup>st</sup> Street	7,040	4 Street level	990	\$18.00 NNN	Immediate



*Newly painted building*

***For more information or to schedule a tour please contact:***

**Will Falero, SIOR**  
[will.falero@proindustrialre.com](mailto:will.falero@proindustrialre.com)  
 Mobile +1 786 389-3236

*Information regarding this property is for informational purposes only. Pro Industrial, LLC does not make any warranty or representation as to the accuracy provided.*