



New England  
Retail Properties, Inc.

**NOW LEASING 19,750 SF**



**FRANK PEPE**  
PIZZERIA NAPOLETANA



**KERRY WOOD**

D: 860.529.9000 X 102

[kwood@newenglandretail.com](mailto:kwood@newenglandretail.com)

[www.newenglandretail.com](http://www.newenglandretail.com)

*In the Heart of the Buckland Hills Retail Corridor*  
233 Buckland Hills Drive, Manchester, CT

# 233 BUCKLAND HILLS DRIVE



## PROPERTY DETAILS

<b>AVAILABLE SPACE</b>	19,750 SF
<b>PROPERTY TYPE</b>	Retail / Restaurant / Fitness Club
<b>PARKING</b>	96 surface spaces
<b>ASKING</b>	\$17 SF + \$8 SF Nets



The shopping center has excellent visibility with easy parking lot access from Buckland Hills Drive.



The subject property is located adjacent to Target and across the street from the Buckland Hills Mall, which features prominent shops and restaurants, such as Macy's, Forever 21, Dave & Busters and LongHorn Steakhouse.



## HIGHWAY ACCESS

Approximately 0.8 miles, 3 minutes to I-84



## LOCATION

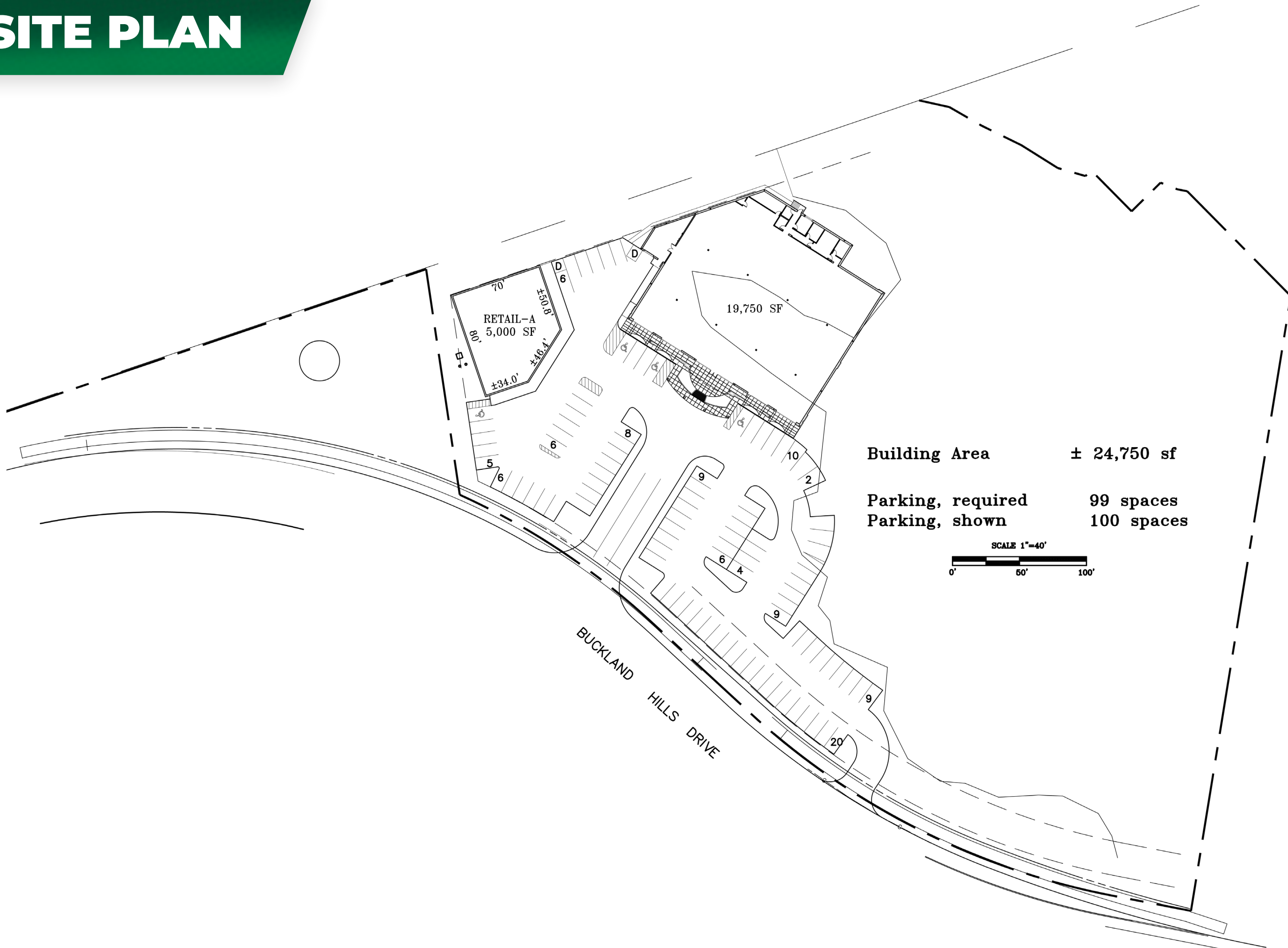
Located in the Buckland Hills retail corridor of Manchester



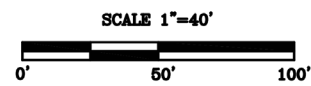
## PARKING

96 on-site surface parking spaces

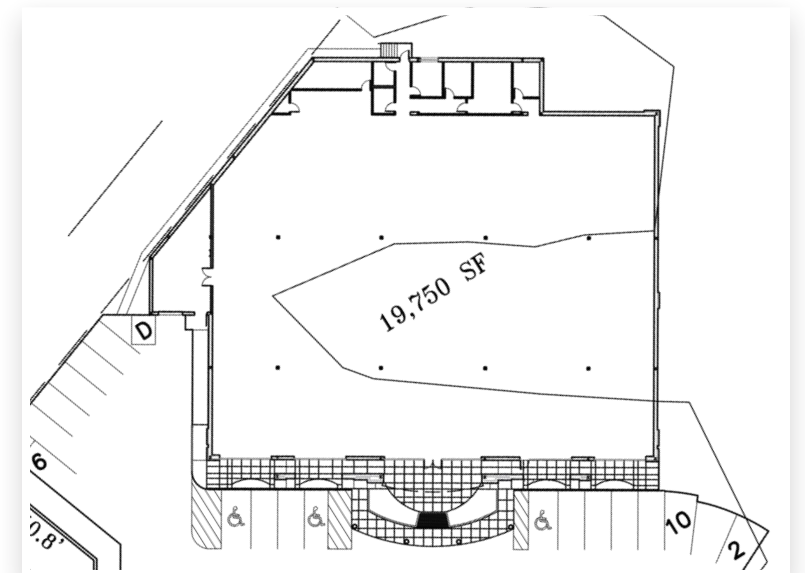
# SITE PLAN



**Building Area** ± 24,750 sf  
**Parking, required** 99 spaces  
**Parking, shown** 100 spaces



**NOW LEASING**



**DETAILS**

**TOTAL AVAILABLE**

19,750 SF

**THE PROMENADE SHOPS AT Evergreen Walk**

ANTHONY VINCE  
Apple  
STONEWALL KITCHEN  
WHOLE FOODS MARKET  
carhartt  
L.L.Bean  
Eddie Bauer  
myeyedr.  
J.Jill  
OLD NAVY  
Panera BREAD  
the paper store  
SEPHORA  
SHAKE SHACK  
ANTHROPOLOGIE  
LOFT

**TRADER JOE'S**  
**BIG LOTS!**  
JOANN  
Michaels  
Marshalls  
DOLLAR TREE  
TACO BELL  
Jersey Mike's  
ULTA BEAUTY

**Distribution Center**  
JCPenney  
amazon

**COSTCO WHOLESALE**

**ALDI**

**CHASE**

**TARGET**  
**THE VITAMIN SHOPPE**  
**MEN'S WEARHOUSE**

**LOWE'S**

**THE HOME DEPOT**

**HOBBY LOBBY**

**chili's**

**THE EDGE**

**CINEMARK**

**TEXAS RANCHHOUSE**

EVERY SEASON STARTS AT  
**DICK'S SPORTING GOODS**  
at home  
goldfish swim school  
COSMO PROF  
DUNKIN'  
McDonald's  
CHUCK E. CHEESE  
SONIC  
Firestone  
BUFFALO WILD WINGS



**COURTYARD BY MARRIOTT**

**Walmart Supercenter**

**BED BATH & BEYOND**  
**WORLD MARKET**

**LESLIE'S**  
**petco**

**IHOP**  
**Walgreens**  
**COX**  
**Batteries + Bulbs**

**DUNKIN'**

**CTS**  
Christmas Tree Shops

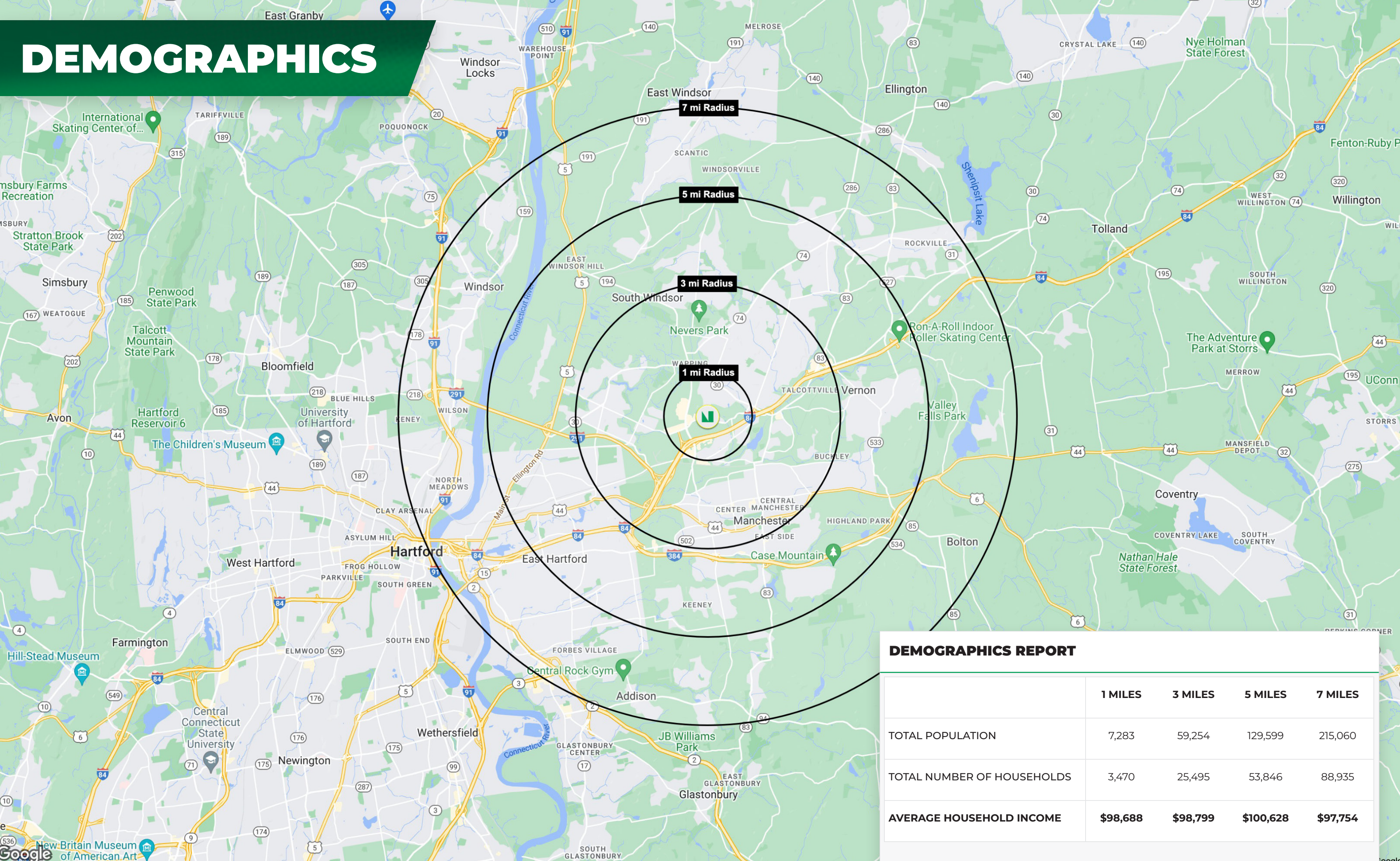
**Raymour & Flanigan FURNITURE**  
CHIPOTLE  
McDonald's  
Starbucks

**Ashley HOMESTORE**  
**MATTRESS FIRM**  
**P.C. RICHARD & SON**  
APPLIANCES • ELECTRONICS • MATTRESSES  
**BEST BUY**  
**urbanAir ADVENTURE PARK**  
**DSW**  
DESIGNER SHOE WAREHOUSE

**The Buckland Hills Mall**

**H&M**  
**CHAMPS SPORTS**  
**BOB'S STORES**  
**DAVE & BUSTER'S**  
**BARNES & NOBLE BOOKSELLERS**  
**LONGHORN STEAKHOUSE**  
**macy's**  
**Foot Locker**  
**Red Robin**  
**MAGGIE McEILY'S**  
**zumiez**  
**VICTORIA'S SECRET**  
**Rainbow**  
**FOREVER 21**  
**FbLens CLOTHING & FOOTWEAR**  
**claire's**  
**FAIRFIELD INN & SUITES**

# DEMOGRAPHICS



DEMOGRAPHICS REPORT				
	1 MILES	3 MILES	5 MILES	7 MILES
TOTAL POPULATION	7,283	59,254	129,599	215,060
TOTAL NUMBER OF HOUSEHOLDS	3,470	25,495	53,846	88,935
AVERAGE HOUSEHOLD INCOME	\$98,688	\$98,799	\$100,628	\$97,754



## CONTACT

Kerry Wood

D: 860.529.9000 X 102

E: [kwood@newenglandretail.com](mailto:kwood@newenglandretail.com)

[www.newenglandretail.com](http://www.newenglandretail.com)

 **New England**  
Retail Properties, Inc.



NO WARRANTY OR REPRESENTATION, EXPRESSED OR IMPLIED, IS MADE AS TO THE ACCURACY OF THE INFORMATION CONTAINED HEREIN, AND SAME IS SUBMITTED SUBJECT TO ERRORS, CHANGE OR PRICE, RENTAL OR OTHER CONDITIONS, WITHDRAWAL WITHOUT NOTICE, AND TO ANY SPECIAL LISTING CONDITIONS IMPOSED BY OUR PRINCIPALS.