



**PRIME RETAIL SPACE
AVAILABLE FOR LEASE AT
STONELEIGH PLAZA**

**18 LAFAYETTE ROAD, UNIT 10, NORTH
HAMPTON, NH 03862**

**Unit 10: 4,000± SF | Offered at \$13.00 PSF
Modified Gross**

NAI Norwood Group

Commercial Real Estate Services, Worldwide

BEDFORD:
116 South River Road
Bedford, NH 03110
Phone: (603) 668-7000
Fax: (603) 647-4325
Email: info@nainorwoodgroup.com

PORTSMOUTH:
2 Greenleaf Woods Drive, #301,
Portsmouth, NH 03801
Phone: (603) 431-3001
Fax: (603) 431-3122
Email: info@nainorwoodgroup.com

CONTACT:

DEANA ARDEN
(603) 682 3440
darden@nainorwoodgroup.com

PROPERTY INFORMATION



DESCRIPTION:

Now available for lease is a 4,000± SF retail/office space at Stoneleigh Plaza, located on Route 1 in North Hampton. This versatile second-floor unit is currently configured as a fitness center but offers endless possibilities for various business types. It features a spacious reception area, oversized windows providing abundant natural light, multiple changing rooms, showers, and mirrored walls. The space can accommodate businesses such as specialty retail, dance schools, martial arts studios, training centers, bridal shops, daycare facilities, nail salons, professional offices, medical offices, and more.

Stoneleigh Plaza is a well-established, multi-tenant shopping center in the heart of North Hampton's retail corridor. The plaza boasts manicured grounds, ample parking, excellent signage opportunities, and direct access to heavily trafficked Route 1, with close proximity to I-95. Neighboring businesses include the Harley Davidson dealership, North Hampton Mall, Dollar Tree, Home Depot, Marshalls, Shaw's Supermarket, LL Bean, Dunkin' Donuts, AutoZone, and more. The space is turnkey and available for immediate occupancy.

PROPERTY FEATURES:

- Ample parking in front and rear
- Total Available 4,000±SF
- Various Allowable Uses
- Ample Parking
- Excellent Visibility
- Located In Well-Established Stoneleigh Plaza

[VIRTUAL TOUR LINK](#)

DEMOGRAPHICS



2024 SUMMARY

2024 SUMMARY	2 MILE	5 MILE	10 MILE
Population	9,690	37,866	134,573
Households	4,079	16,390	59,179
Families	2,614	10,440	35,309
Avg HH Size	2.34	2.28	2.24
Median Age	52.0	52.2	48.0
Median HH Income	\$105,501	\$109,334	\$105,914
Avg HH Income	\$158,028	\$160,554	\$153,605

BUSINESSES (10 MILE)



9,356

TOTAL BUSINESSES



99,428

TOTAL EMPLOYEES

INCOME (10 MILE)



\$105,914

MEDIAN HH INCOME



\$67,413

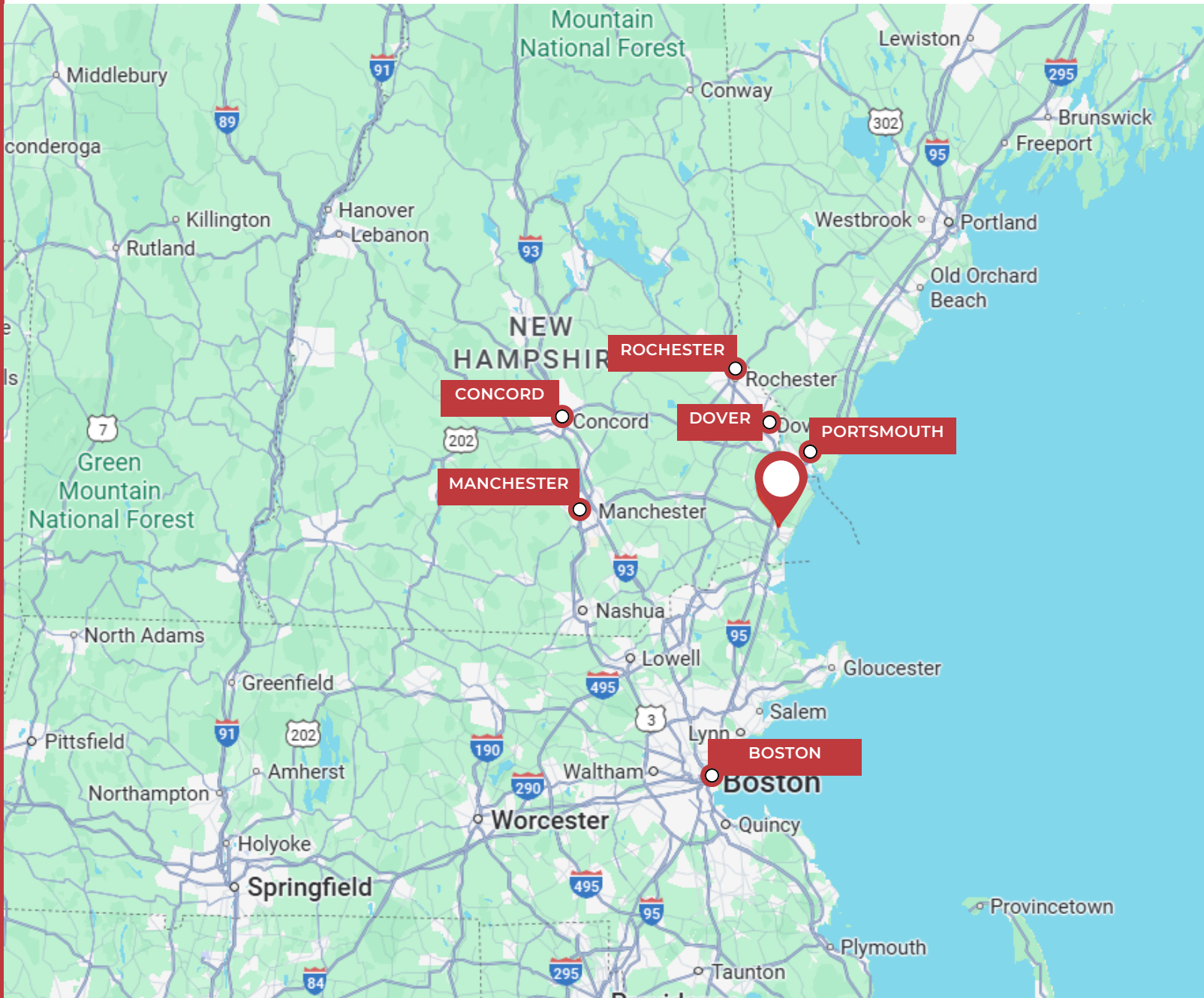
PER CAPITA INCOME



\$492,374

MEDIAN NET WORTH

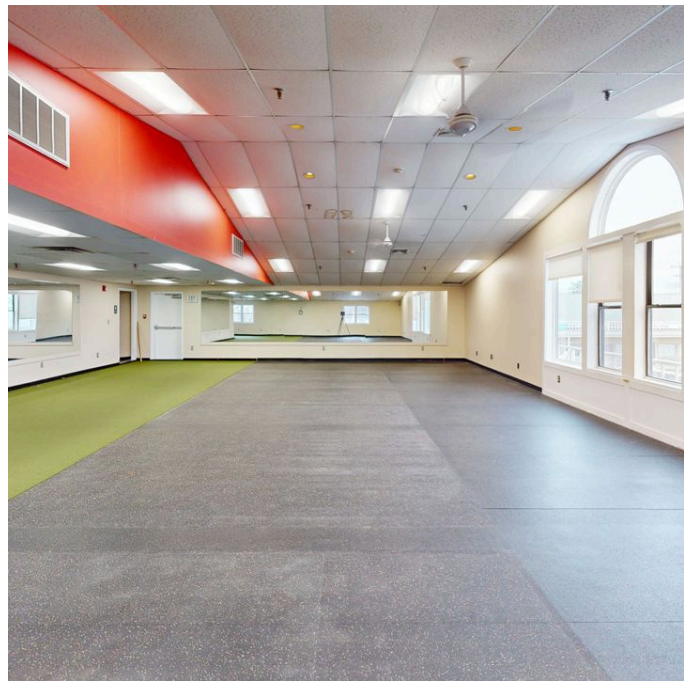
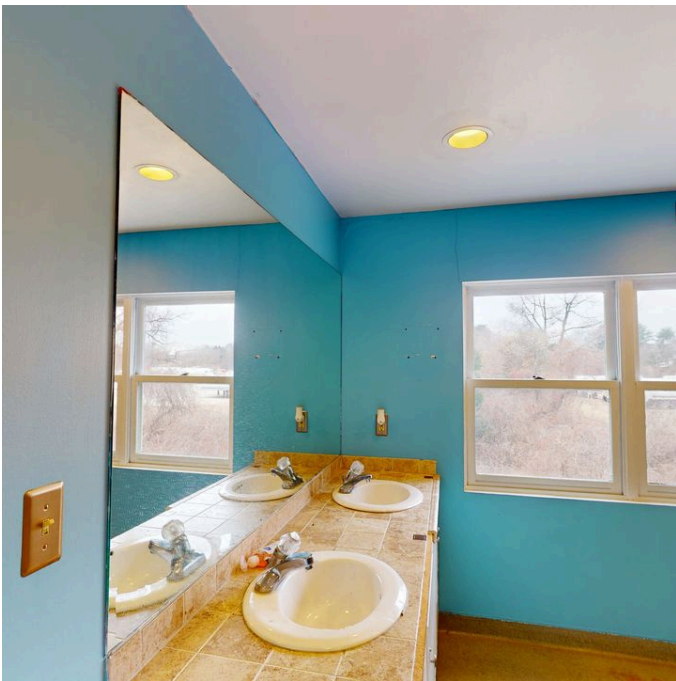
MAP LOCATOR



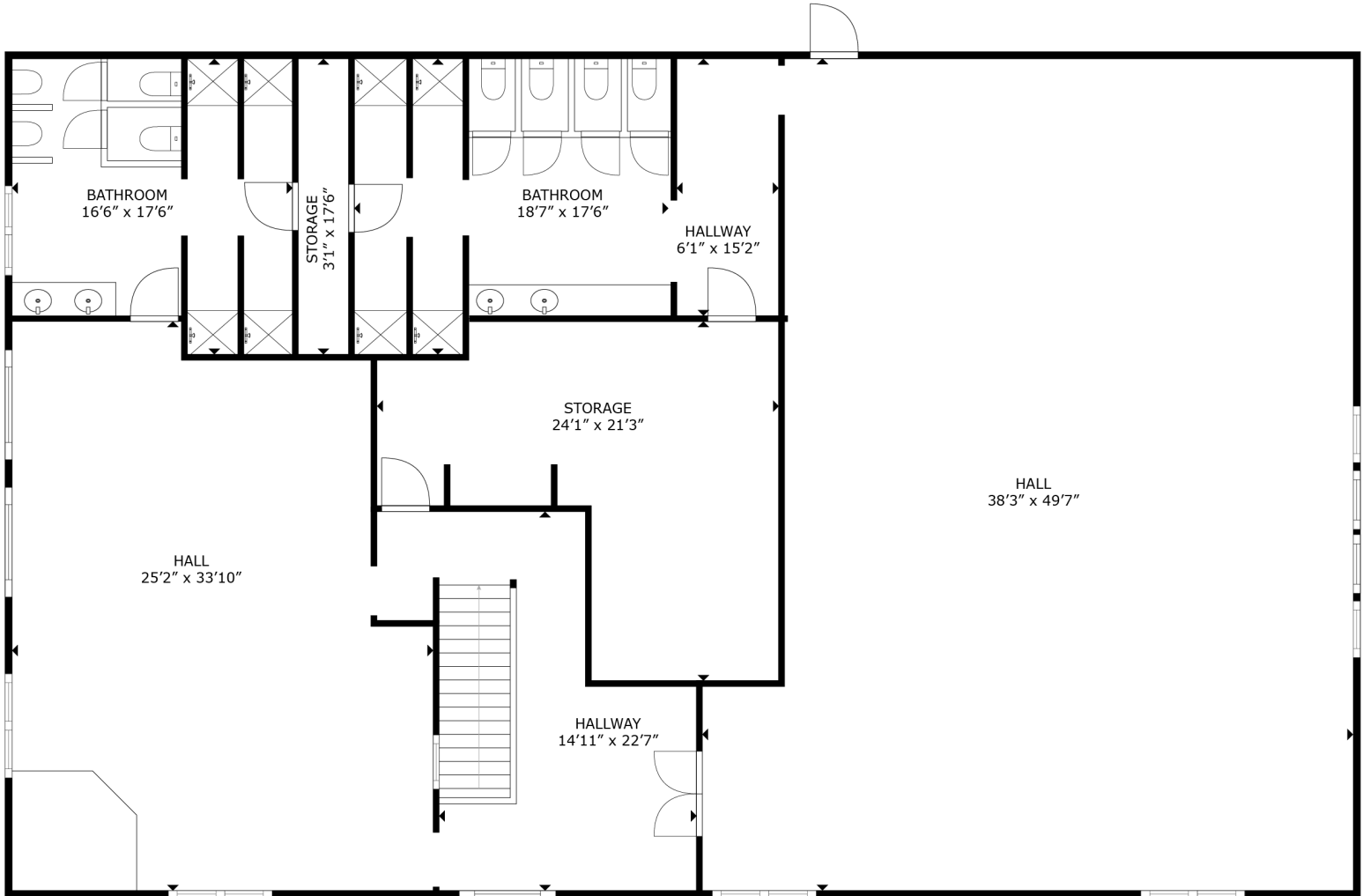
DRIVE TIMES TO:

Rochester, NH	41 mins	Manchester, NH	38 mins
Dover, NH	32 mins	Concord, NH	51 mins
Portsmouth, NH	20 mins	Boston, MA	1 hr 2 mins

PHOTOS



FLOOR PLAN



UNIT 10

CONFIDENTIALITY & DISCLAIMER

THIS OFFERING IS SUBJECT TO THE FOLLOWING ASSUMPTIONS AND LIMITING CONDITIONS:

NAI Norwood Group assumes no responsibility for matter legal in character, nor do we render any opinion as to the title which is assumed to be good.

We believe the information furnished to us by the owners and others is reliable, but we assume no responsibility for its accuracy.

Buyers should not rely on this information, and Buyers should make their own investigation of any and all aspects.

PRESENTED BY:

DEANA ARDEN

SENIOR ADVISOR

tel (603) 637-2014

mobile (603) 682-3440

arden@nainorwoodgroup.com

NAINorwood Group
Commercial Real Estate Services, Worldwide

NAI Norwood Group
116 South River Road
Bedford, NH 03110
www.nainorwoodgroup.com