

FOR LEASE

WALNUT GROVE INDUSTRIAL PARK

6115 NE 63rd Street | Vancouver, WA 98661



900 Washington St, Suite 850, Vancouver, WA
360.597.0574 | www.fg-cre.com



PROPERTY HIGHLIGHTS

Availabilities:

- **28,000 - 56,000 SF** warehouse/manufacturing building, delivers 2026, 2 grade doors, 6 docks, 72 parking spaces - call for terms
- **Yard space:** 35,000 SF fenced yard
- **Suite 6205:** 12,000 SF (approx. 2,000 SF office)
- \$0.91 - \$1.00/SF NNN
- Excellent location situated on a main thoroughfare, centrally located
- 10 minutes to downtown Vancouver; 18 minutes to Portland Int'l Airport; 20 minutes to downtown Portland



FOR MORE INFORMATION:

Brett Irons
360.597.0574 | biron@fg-cre.com

FOR LEASE

WALNUT GROVE INDUSTRIAL PARK

6115 NE 63rd Street | Vancouver, WA 98661



900 Washington St, Suite 850, Vancouver, WA
360.597.0574 | www.fg-cre.com



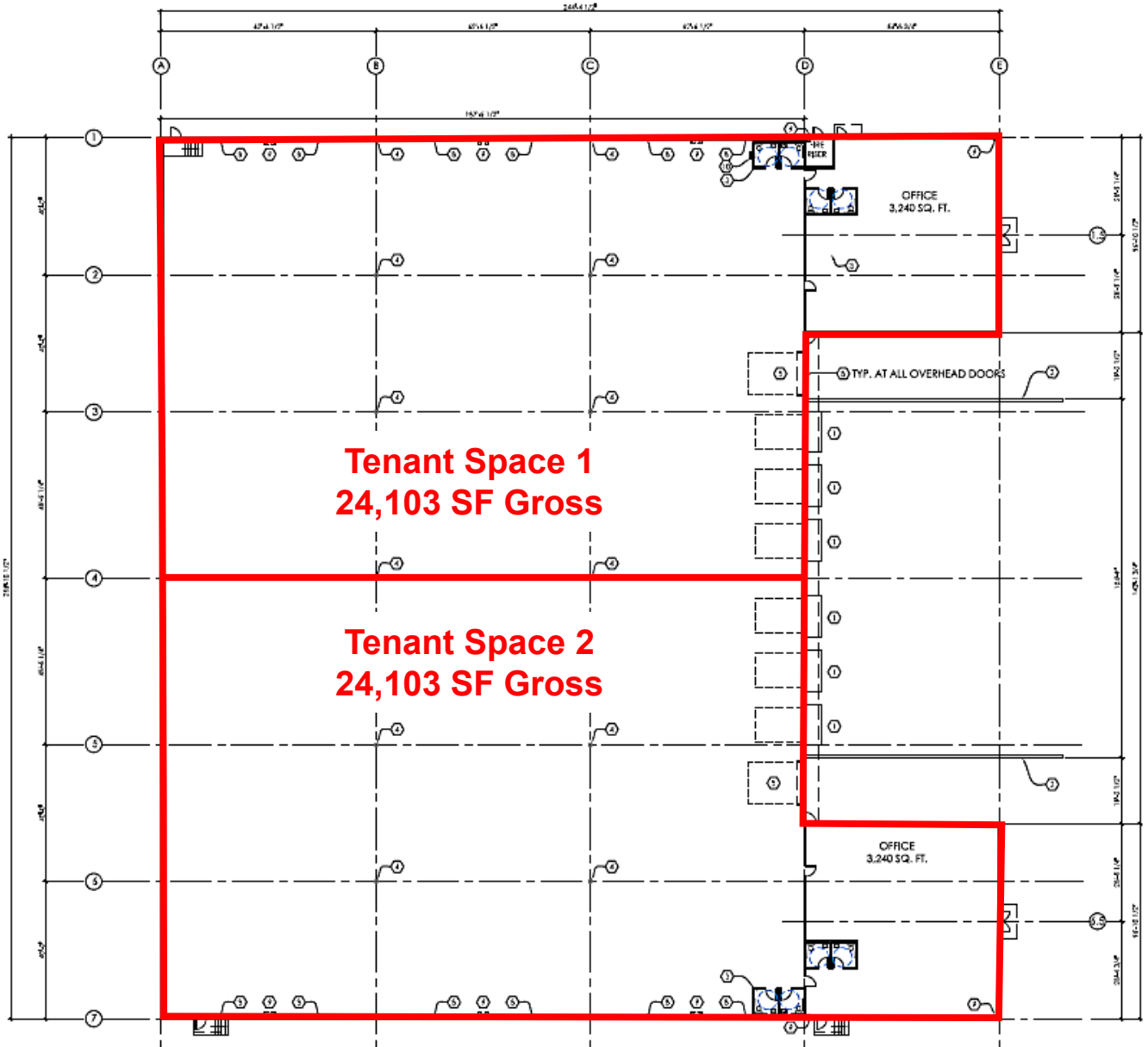
FOR LEASE

WALNUT GROVE INDUSTRIAL PARK

6115 NE 63rd Street | Vancouver, WA 98661



900 Washington St, Suite 850, Vancouver, WA
360.597.0574 | www.fg-cre.com



FOR LEASE

WALNUT GROVE INDUSTRIAL PARK

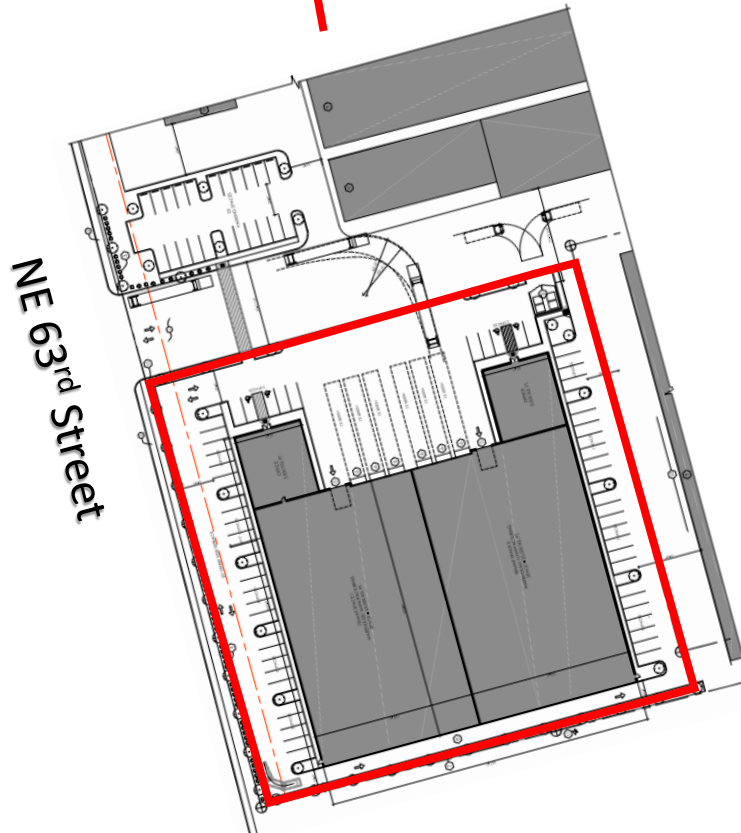
6115 NE 63rd Street | Vancouver, WA 98661



900 Washington St, Suite 850, Vancouver, WA
360.597.0574 | www.fg-cre.com



- 24,103 SF – 54,746 SF
- 2 grade and 6 docks
- 72 parking spaces
- Call for terms



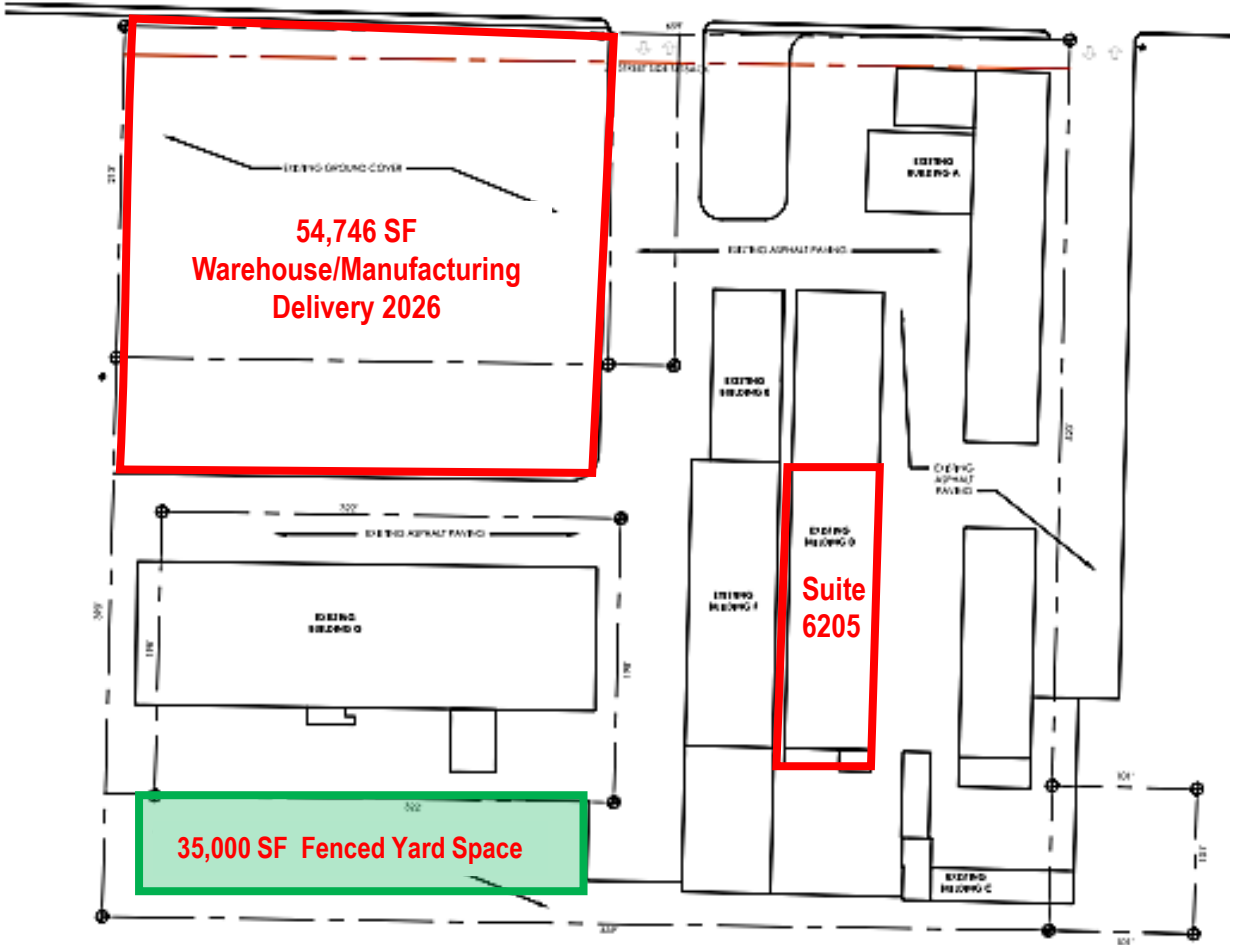
FOR LEASE

WALNUT GROVE INDUSTRIAL PARK

6115 NE 63rd Street | Vancouver, WA 98661



900 Washington St, Suite 850, Vancouver, WA
360.597.0574 | www.fg-cre.com



FOR LEASE

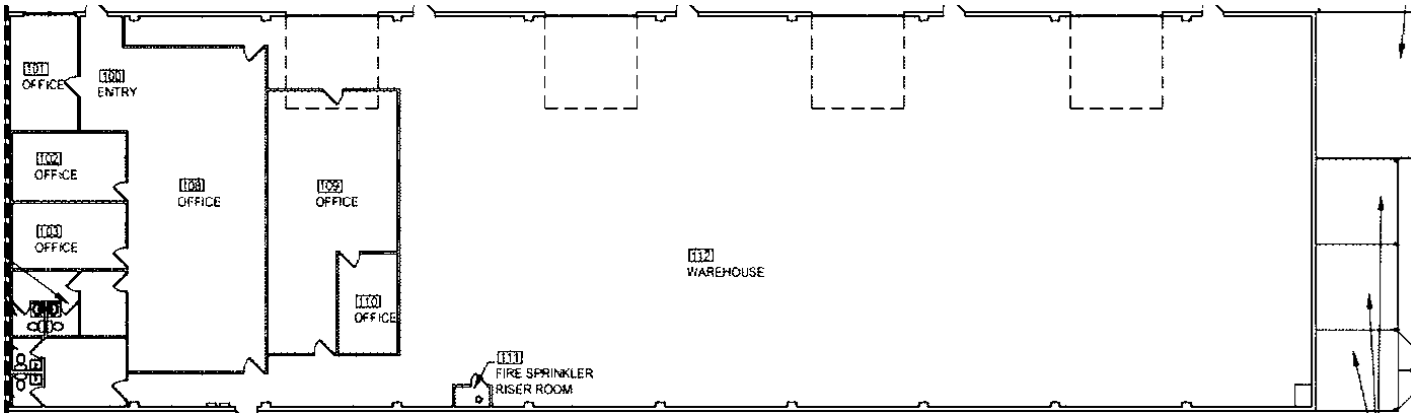
WALNUT GROVE INDUSTRIAL PARK

6115 NE 63rd Street | Vancouver, WA 98661



900 Washington St, Suite 850, Vancouver, WA
360.597.0574 | www.fg-cre.com

Suite 6205: 12,000 SF (approx. 2,000 SF office)



FOR LEASE

WALNUT GROVE INDUSTRIAL PARK

6115 NE 63rd Street | Vancouver, WA 98661



900 Washington St, Suite 850, Vancouver, WA
360.597.0574 | www.fg-cre.com



2024 Demographics

	2-Mile	5-Mile	10-Mile
Est. Population	57,487	285,773	673,819
Avg. Household Income	\$84,847	\$91,659	\$105,675
Daytime Employment	22,091	113,405	322,087

Average Daily Traffic Counts

NE 63rd St @ NE 66th Ave W – 11,184
 NE Andresen Rd @ NE 63rd St N – 22,413
 NE Andresen Rd @ NE 60th St N – 23,946

This statement with the information it contains is given with the understanding that all the negotiations relating to the purchase, rental or leasing of the property described above shall be conducted through this office. The above information, while not guaranteed, has been secured from sources we believe to be reliable.