

120-124 E. LANCASTER AVENUE (RT. 30) ARDMORE (MONTGOMERY COUNTY), PA



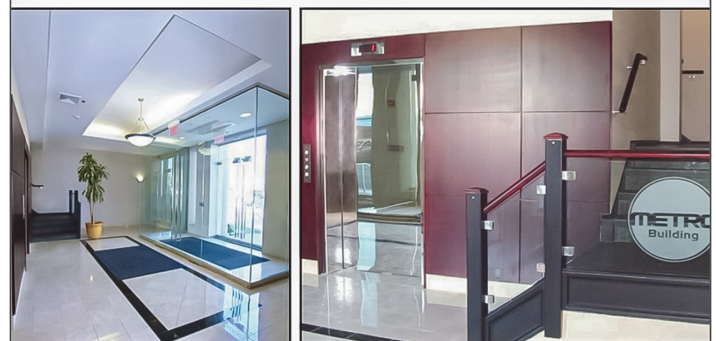
THE METRO SUBURBAN OFFICE BUILDING

LOCATION

LOCATED IN THE HEART OF ARDMORE'S COMMERCIAL DISTRICT ALONG THE HISTORIC MAIN LINE IN MONTGOMERY COUNTY, PA

PROPERTY HIGHLIGHTS

- **2,200 SF AVAILABLE**
- RENOVATED WITH ENERGY EFFICIENT BUILDING SYSTEMS & MECHANICALS
- ON-SITE PARKING
- SEPTA BUS STOP AT YOUR FRONT DOOR
- STEPS TO TRAIN WHERE YOU CAN RIDE SEPTA'S REGIONAL R-5 RAIL LINE & AMTRAK'S KEYSTONE SERVICE ACCESSING PHILADELPHIA, HARRISBURG & NEW YORK
- ENJOY THE CONVENIENCE OF WORKING STEPS AWAY FROM THE FANTASTIC RESTAURANTS & SHOPPING OF SUBURBAN SQUARE & ALONG LANCASTER AVENUE



PLEASE CONTACT:

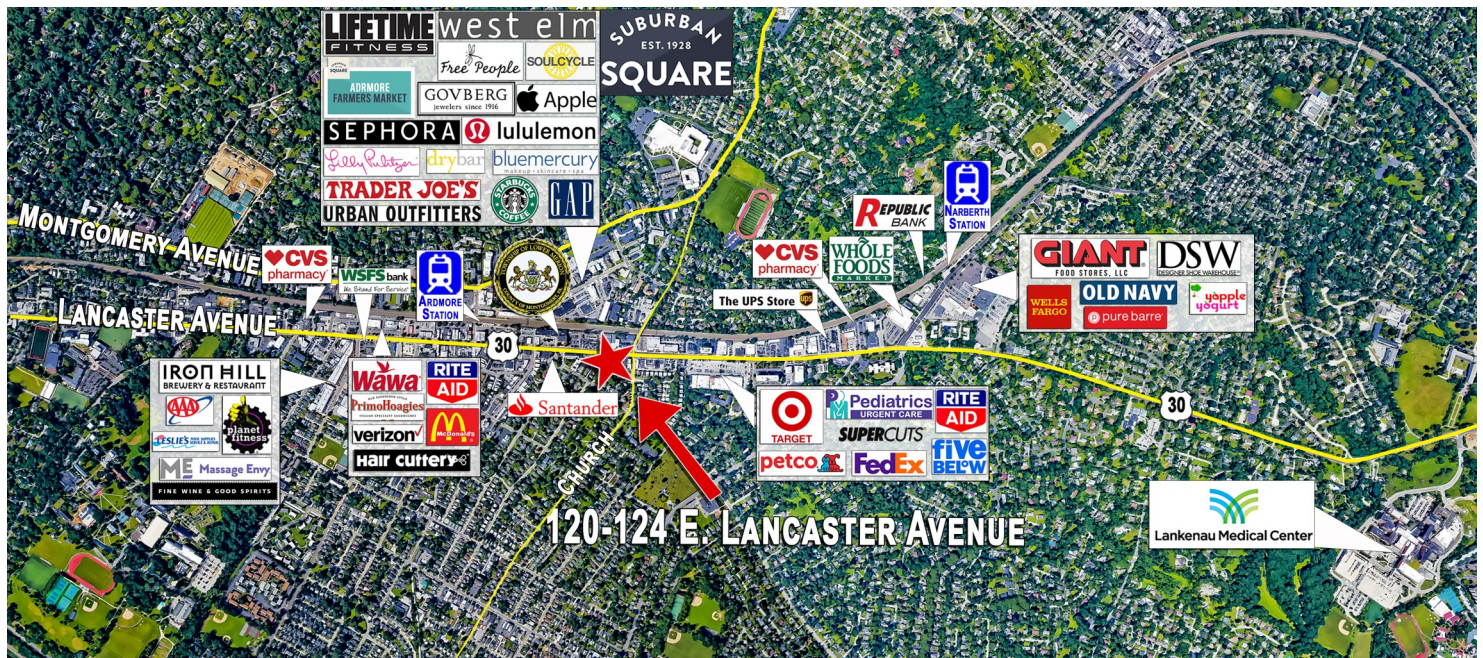
Michele Grasso
Managing Director
T. 215-701-3818
michelegrasso@eusrealty.com

USREALTY
ASSOCIATES, INC.
A Full Service Real Estate Company

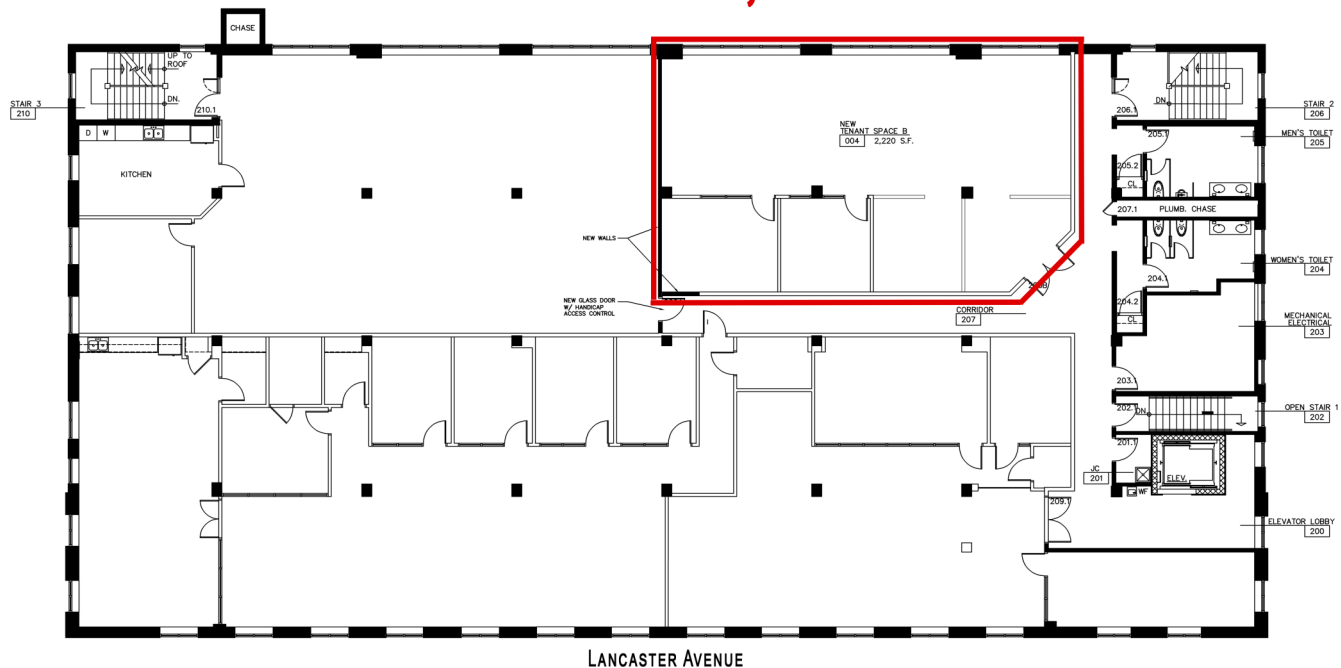
120-124 E. Lancaster Avenue - Suite 101 - Ardmore - PA - 19003
T.215-557-9900 F.215-701-3839
www.eusrealty.com

120-124 E. LANCASTER AVENUE (RT. 30)

ARDMORE (MONTGOMERY COUNTY), PA



AVAILABLE - 2,200 SF



SECOND FLOOR PLAN

PLEASE CONTACT:

Michele Grasso
 Managing Director
 T. 215-701-3818
michelegrasso@eusrealty.com

EUSREALTY
 ASSOCIATES, INC.
 A Full Service Real Estate Company

120-124 E. Lancaster Avenue - Suite 101 - Ardmore - PA - 19003

T.215-557-9900 F.215-701-3839

www.eusrealty.com