



**EMMORTON PROFESSIONAL CENTER**  
**2107 LAUREL BUSH RD, BEL AIR, MD**

1,649 - 3,298 SF of Office Space Available



**MASON POPHAM**

[mason.popham@thomas-park.com](mailto:mason.popham@thomas-park.com)

[www.thomas-park.com](http://www.thomas-park.com)

410-280-0220





## EMMORTON PROFESSIONAL CENTER | 2107 LAUREL BUSH RD, BEL AIR, MD

1,649 - 3,298 SF of Office Space Available

### Available Spaces

Space	Size	Term	Rental Rate	Space Use	Condition	Available
2nd Floor Ste 209	3,298 SF (demisable)	Negotiable	\$18.00 PSF NNN	Office	Full Build-Out	Apr 1, 2026

# EMMORTON PROFESSIONAL CENTER

## 2107 LAUREL BUSH RD, BEL AIR, MD

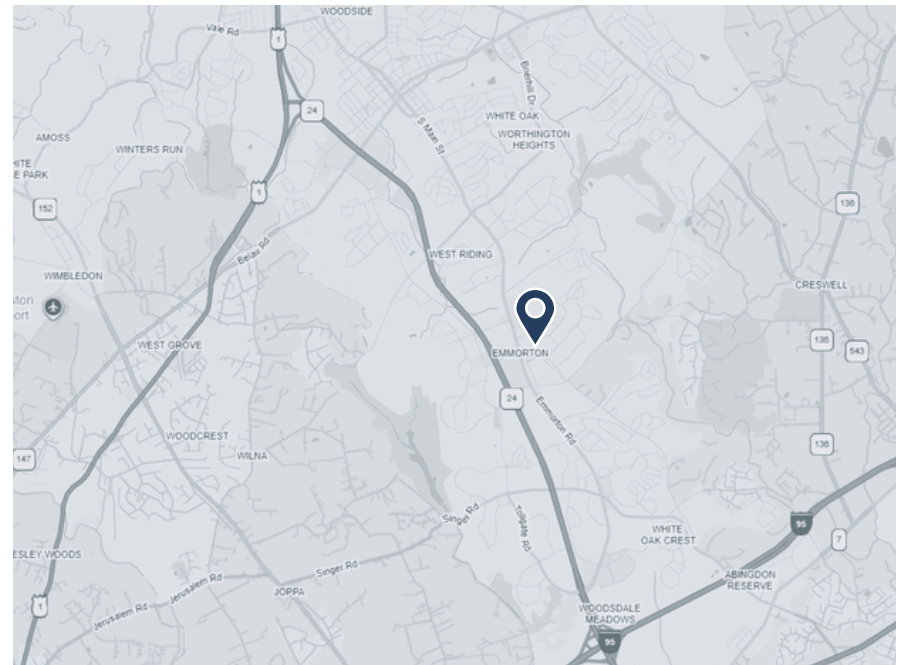
### Property Facts

<b>Building Type</b>	Office/Medical
<b>Building Height</b>	3 Stories
<b>Building Size</b>	29,102 SF
<b>Parking</b>	150 Surface Parking Spaces

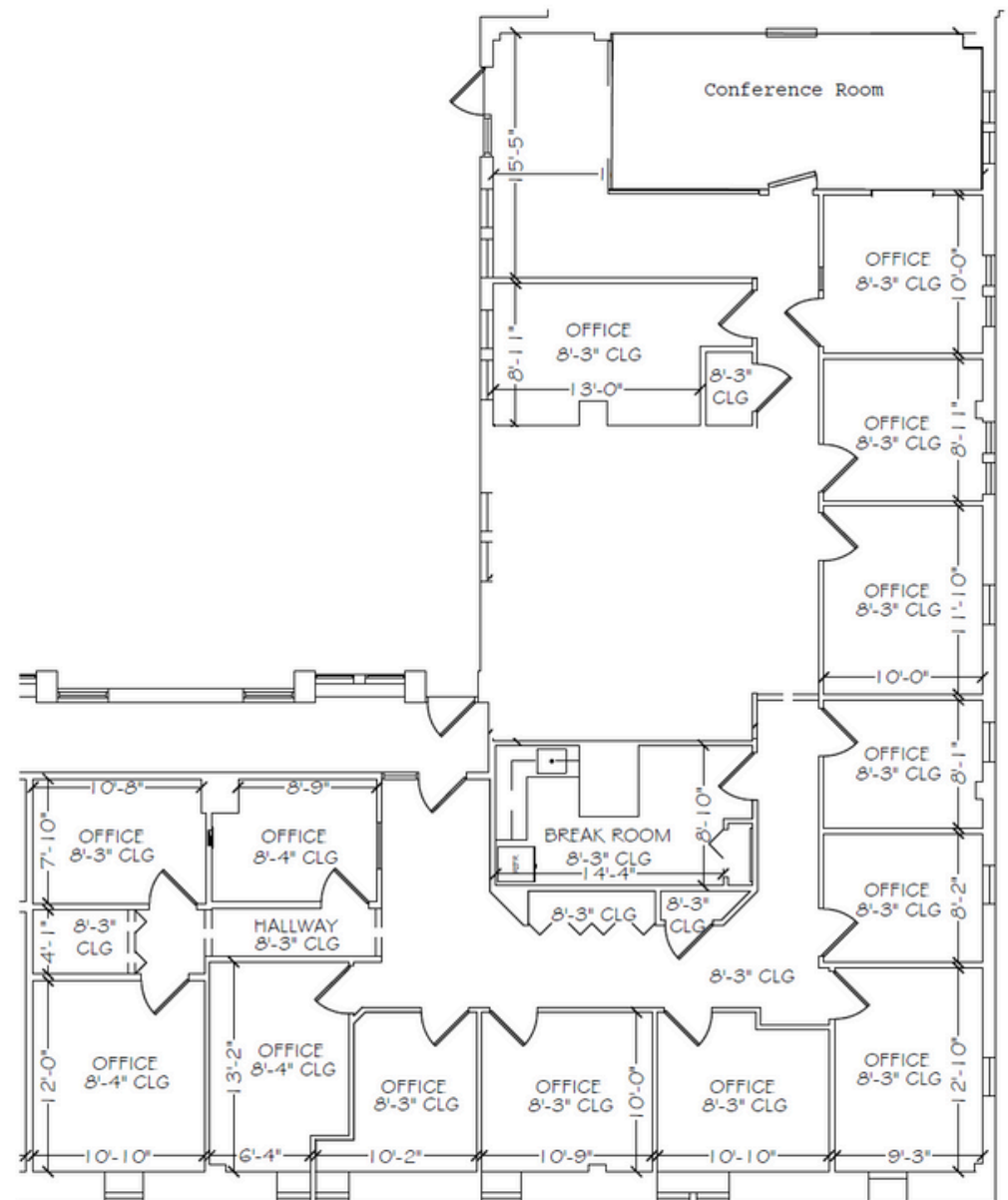
### Property Overview

Emmorton Professional Center is a well-maintained office building situated on Laurel Bush Road, just north of the Festival at Bel Air and near the intersection with Emmorton Road (Route 924). The property offers convenient connectivity to Veterans Memorial Highway (Route 24), Interstate 95, and the Bel Air central business district. The property is supported by an expansive surface parking lot with more than 150 available spaces.

Tenants benefit from immediate access to nearby retail amenities at Festival at Bel Air, including ShopRite, Marshalls, Petco, Rite Aid, Five Below, Chipotle, and Panera Bread, among others. Additional shopping, dining, and service options are located just minutes away at the Boulevard at Box Hill and Constant Friendship shopping centers, featuring national retailers such as Wegmans, Walmart, Target, Lowe's, BJ's, Regal Cinemas, Starbucks, Chick-fil-A, and many more.











**Downtown Bel Air**

**Emmorton Professional Center  
2107 Laurel Bush Rd, Bel Air, MD**

**Festival at Bel Air**

## **EMMORTON PROFESSIONAL CENTER 2107 LAUREL BUSH RD, BEL AIR, MD**

1,649 - 3,298 SF OF OFFICE SPACE AVAILABLE



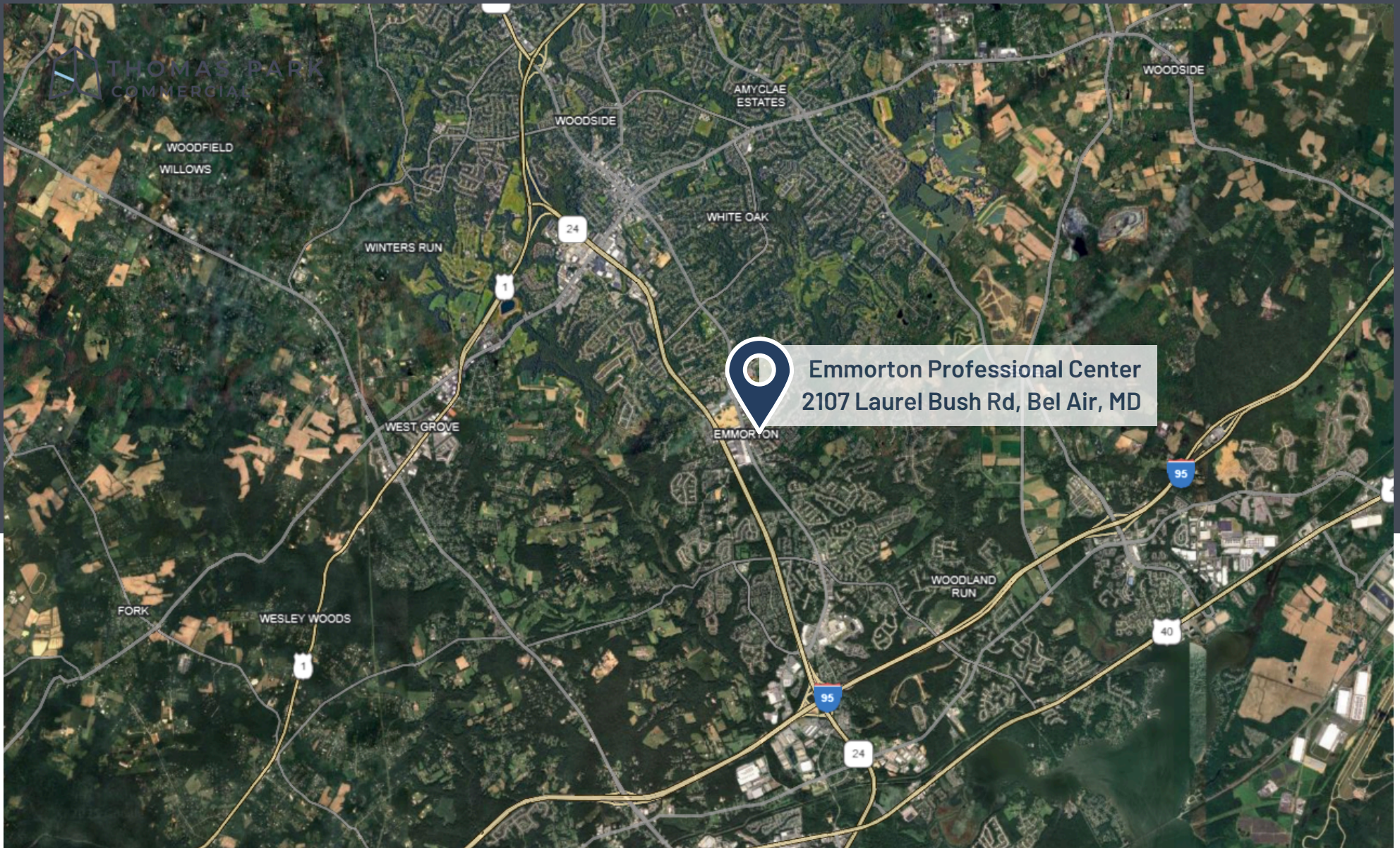
**MASON POPHAM**

[mason.popham@thomas-park.com](mailto:mason.popham@thomas-park.com)

[www.thomas-park.com](http://www.thomas-park.com)

410-280-0220





## **EMMORTON PROFESSIONAL CENTER 2107 LAUREL BUSH RD, BEL AIR, MD**

1,649 - 3,298 SF OF OFFICE SPACE AVAILABLE



**MASON POPHAM**

[mason.popham@thomas-park.com](mailto:mason.popham@thomas-park.com)

[www.thomas-park.com](http://www.thomas-park.com)

410-280-0220





# YOUR COMMERCIAL REAL ESTATE PARTNER

*Thomas Park is a full-service commercial real estate firm offering alternative investment strategies and third-party commercial real estate services.*



**MASON POPHAM**

[mason.popham@thomas-park.com](mailto:mason.popham@thomas-park.com)

[www.thomas-park.com](http://www.thomas-park.com)

410-280-0220



## **THOMAS PARK COMMERCIAL**

Thomas Park Commercial specializes in leasing and investment brokerage across all commercial asset classes throughout Maryland.



## **THOMAS PARK INVESTMENTS**

TPI is one of the fastest growing private equity real estate investment firms on the East Coast focused exclusively on healthcare real estate.



## **THOMAS PARK MANAGEMENT**

TPM is a best in class property management firm with a 30+ year track record in the commercial real estate industry.



## **THOMAS PARK DESIGN**

TPD is an innovative interior design firm specializing in healthcare, medical office, commercial office, and retail.



## **THOMAS PARK CONSTRUCTION**

TPC focuses on commercial construction within the healthcare, retail, office and industrial sectors.