

For
Sale/Lease

36,100 SF
Industrial Buildings

5500-5520 McDermott Dr

Berkeley, Illinois 60163

PROPERTY HIGHLIGHTS

- Total Buildings Square Footage: 36,100 SF
- Clear Heights: 14'-15'8"
- Power: 400-600Amps/240 Volts
- Parking: Ample Parking/Outdoor Storage
- Drive-in Doors: 2
- Interior Dock: 1
- Close proximity to I-294, and I-290



36,100 SF AVAILABLE
FOR SALE/LEASE



14' CLEAR
15'8" CLEAR



2 DRIVE-IN DOORS
1 INTERIOR DOCK



AMPLE PARKING



400-600AMPS
240VOLTS



OUTDOOR
STORAGE

Contact

Joe Bronson
+1 630 317 0725
jbronson@hiffman.com

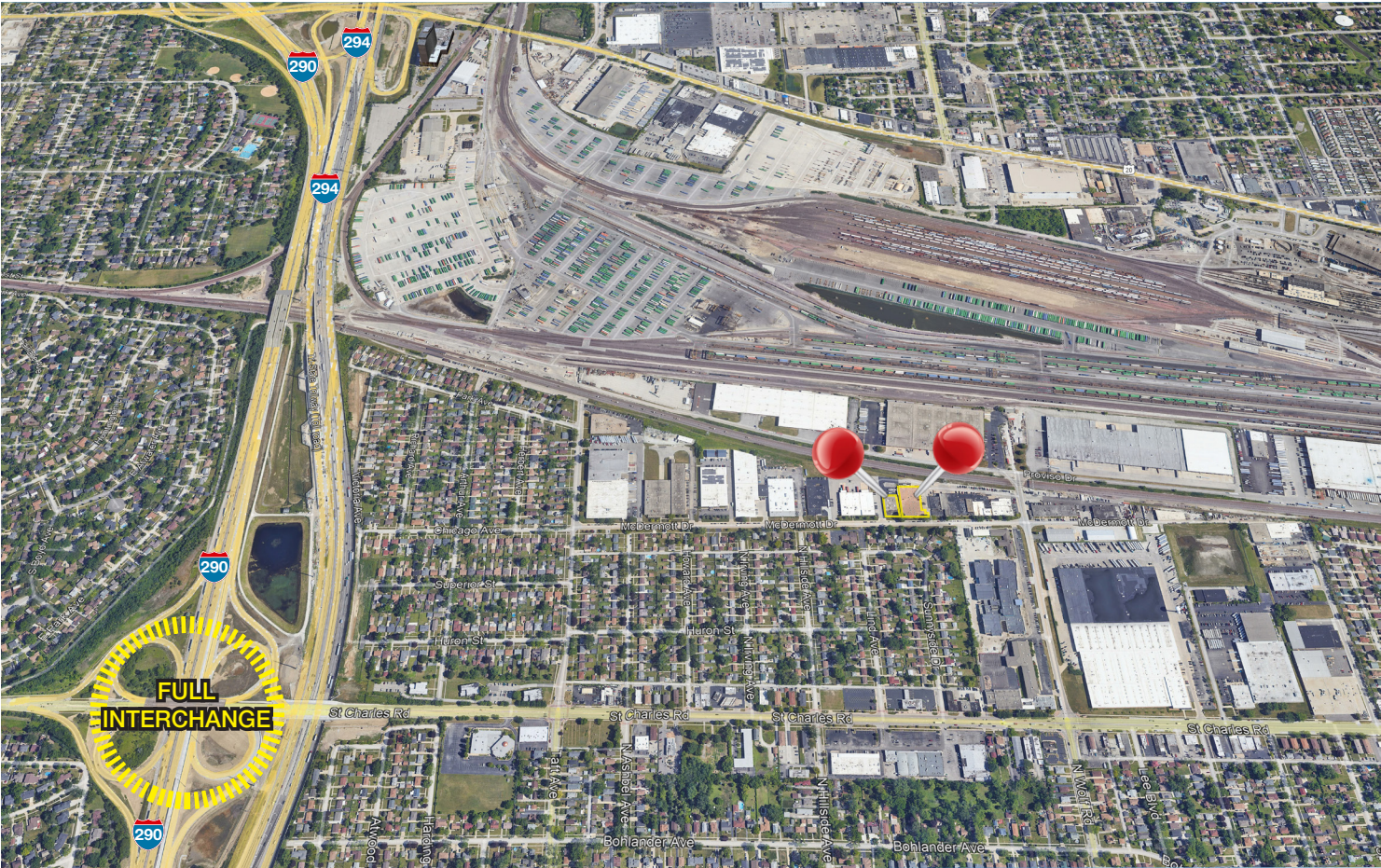
Paddy Dwyer
+1 630 317 0794
pdwyer@hiffman.com

Pat Clifford
+1 630 317 0753
pclifford@hiffman.com

One Oakbrook Terrace
Suite 400
Oakbrook Terrace, Illinois 60181
+1 630 932 1234

5500-5520 MCDERMOTT DR, BERKELEY
AERIAL WITH BOTH PROPERTIES SHOWN

5500-5520 McDermott Dr



CALL TO SCHEDULE A TOUR