

The Fairgrounds Business Park

5 Mollison Way | Lewiston, ME 04240



— Property Highlights —

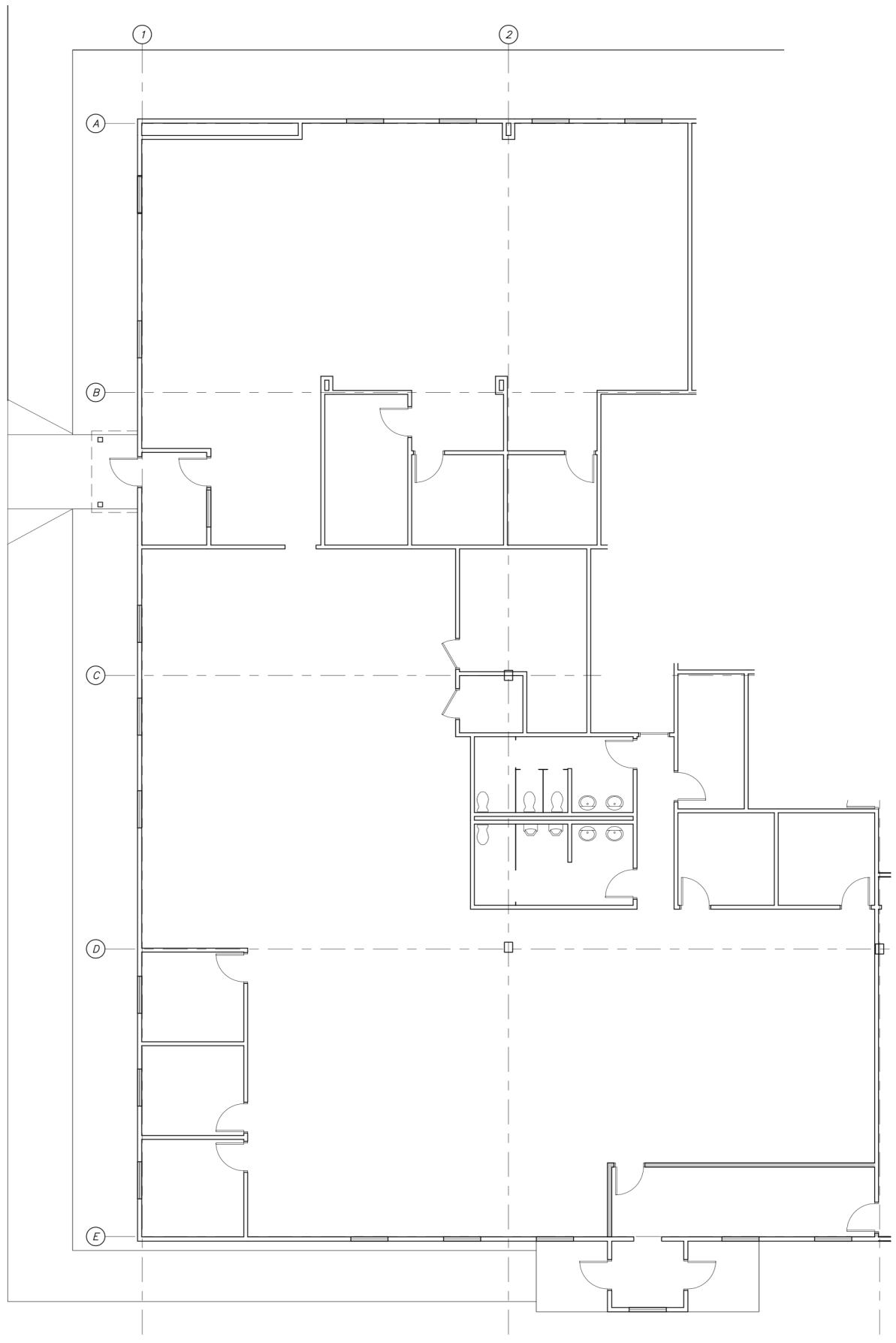
- 7,671± SF of 1st Floor office space available
- Join the State of Maine Department of Labor
- Enjoy an all-inclusive lease rate in Lewiston's premier business park.
- Located on the City bus route
- Building mounted & monument signage available
- Area businesses include St. Mary's, Just In Time Bowling, Subway, Creative Works, BMV, Marco's Restaurant, and more
- Lease Rate: \$18.00/SF Gross (all utilities Included)



Owner	Lewiston Properties, LLC
Assessors Reference	Map 169, Lot 37
Building Size	19,200± SF
Lot Size	2.3± AC
Available Space	7,671± SF
Signage	Building Mounted & Pylon
HVAC	Rooftop mounted forced hot air and AC
Utilities	Municipal water/sewer
Zoning	CB- Community Business District
Tenants	State of Maine Department of Labor
Parking	Ample. 140+ common parking spaces
Lease Rate	\$18.00/SF Gross (all utilities included)



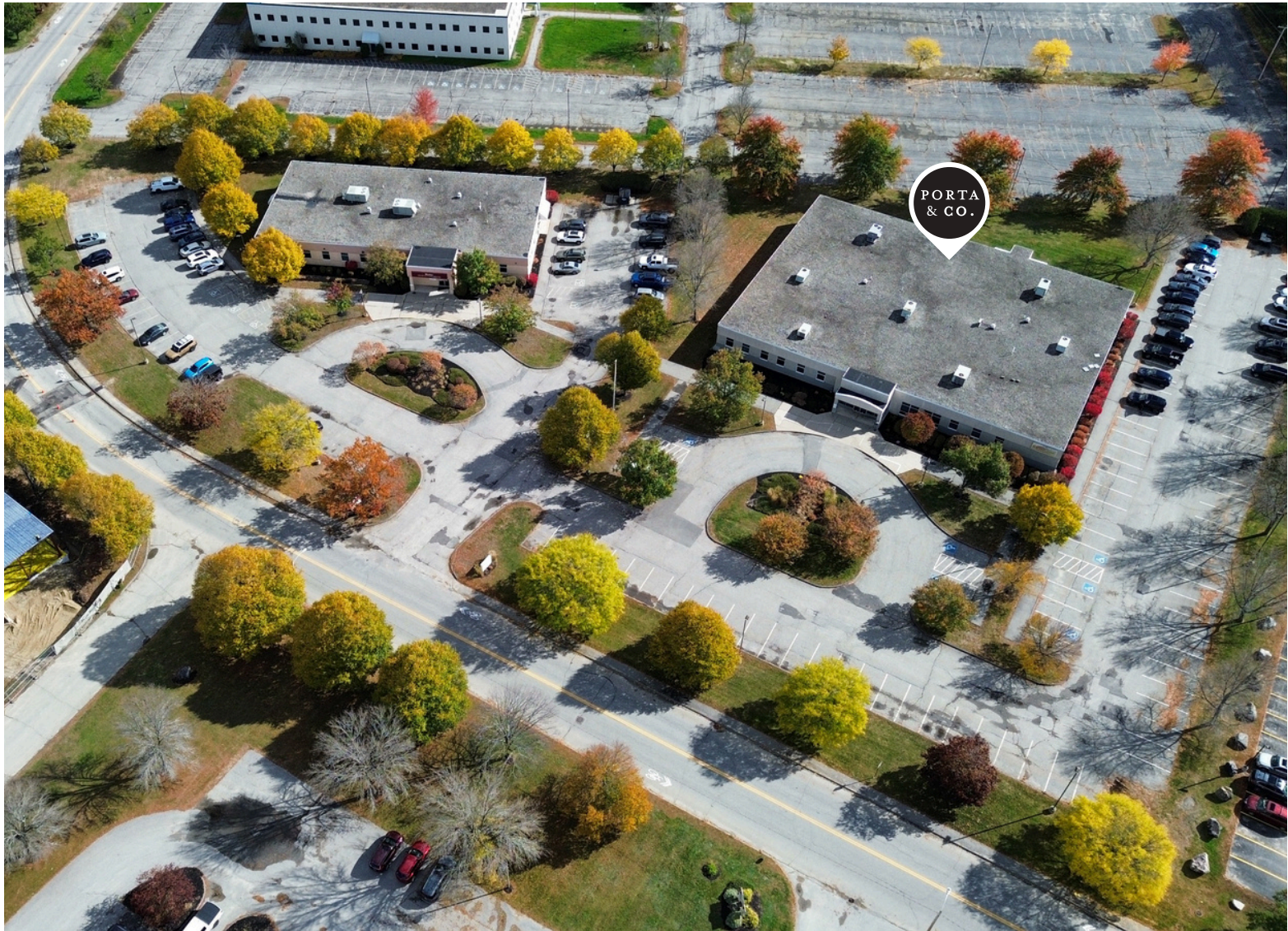
Main Entrance



PORTA
& CO.

Exterior Photos

5 Mollison Way, Lewiston, ME 04240





CONTACT



Tim Millett, CCIM

Broker

C: 207-713-6995

O: 207-558-0893

tmillett@portacompany.com

This information has been obtained from sources believed reliable and is intended for informational use only. The information contained herein has not been verified for accuracy or completeness. It is recommended that prospective tenants and buyers conduct their own inspection of the property and verify all information. Any reliance on this information is solely at your own risk. Photos herein are the property of their respective owners. Use of these images without the express written consent of the owner is prohibited.

PORTA & CO.

COMMERCIAL REAL ESTATE

30 Milk Street, Second Floor
Portland, ME 04101

207-747-1515

www.portacompany.com