

LAND FOR SALE / OFFICE SPACE FOR LEASE

400 W. Green Meadows Dr. | Greenfield, IN 46140



Woodland Green Office Park Office Space for Lease and 1.2 Acres of Land Available

Property Size:	13,775 SF
Available for Lease:	Suite 102 - 850 SF / Suite 106 - 1,385 SF
Land:	1.2 Acres Available
Zoning:	Commercial
Year Built:	1989
Parking:	Ample parking available
Signage:	Pylon and Building
Lease Rate:	\$23.50/SF (includes CAM and utilities)
List Price for Land:	Contact Broker

Details:

- Multi-tenant building.
- Covered entrance.
- Close proximity to Hancock Regional Health.
- Located in one of the fastest growing communities in Indiana.
- Sign space available on directory sign and on building.
- Local ownership, management, and maintenance.

[VIEW PROPERTY ONLINE](#)

NAICressy

CS Fitzgerald LLC

P 317.875.8888 | CRESSY.COM | CONNECT WITH US! [in](#) [x](#) [f](#) [v](#)
3502 Woodview Trace, Suite 250, Indianapolis, IN 46268

Cressy Commercial Real Estate is a Minority Business Enterprise (MBE) as well as certified by the National Native American Supplier Council (NNASC).



NNASC
National Native American
Supplier Council

Information furnished regarding property for sale, rental or financing is from sources deemed reliable. But no warranty or representation is made as to the accuracy thereof and same is submitted subject to errors, omissions, change of price, rental or other conditions, prior sale, leased, financing or withdrawal without notice. No liability of any kind is to be imposed on the broker herein. NAI Cressy is the Global Brokerage Division of Cressy Commercial Real Estate.



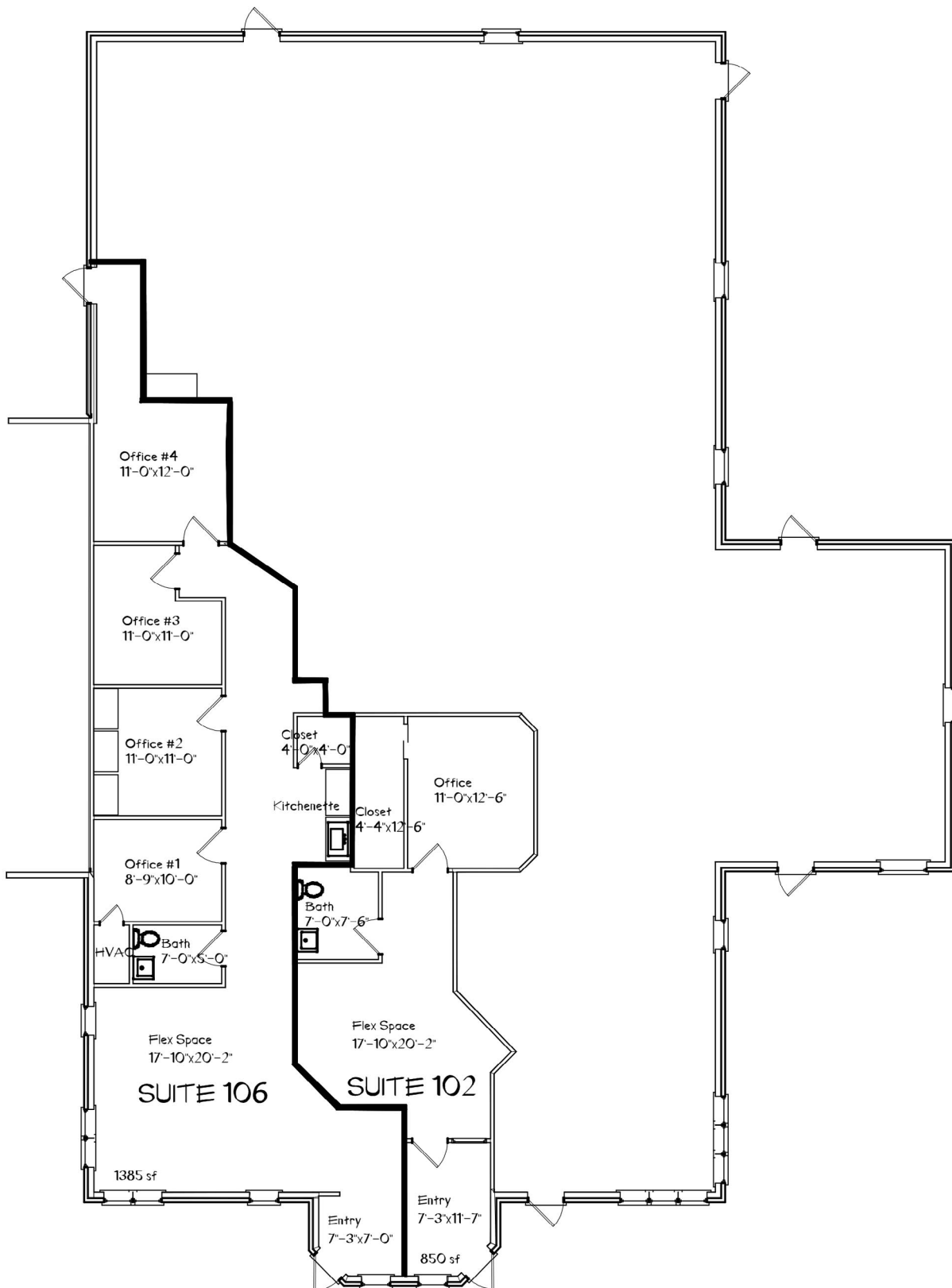
Brian Fitzgerald, Principal, CS Fitzgerald
D 317.509.1192 | csfitzgeraldllc@gmail.com

Joe Lonnemann, Vice President
D 317.566.5624 | jdl@cressy.com

FLOOR PLAN

LAND FOR SALE / OFFICE SPACE FOR LEASE

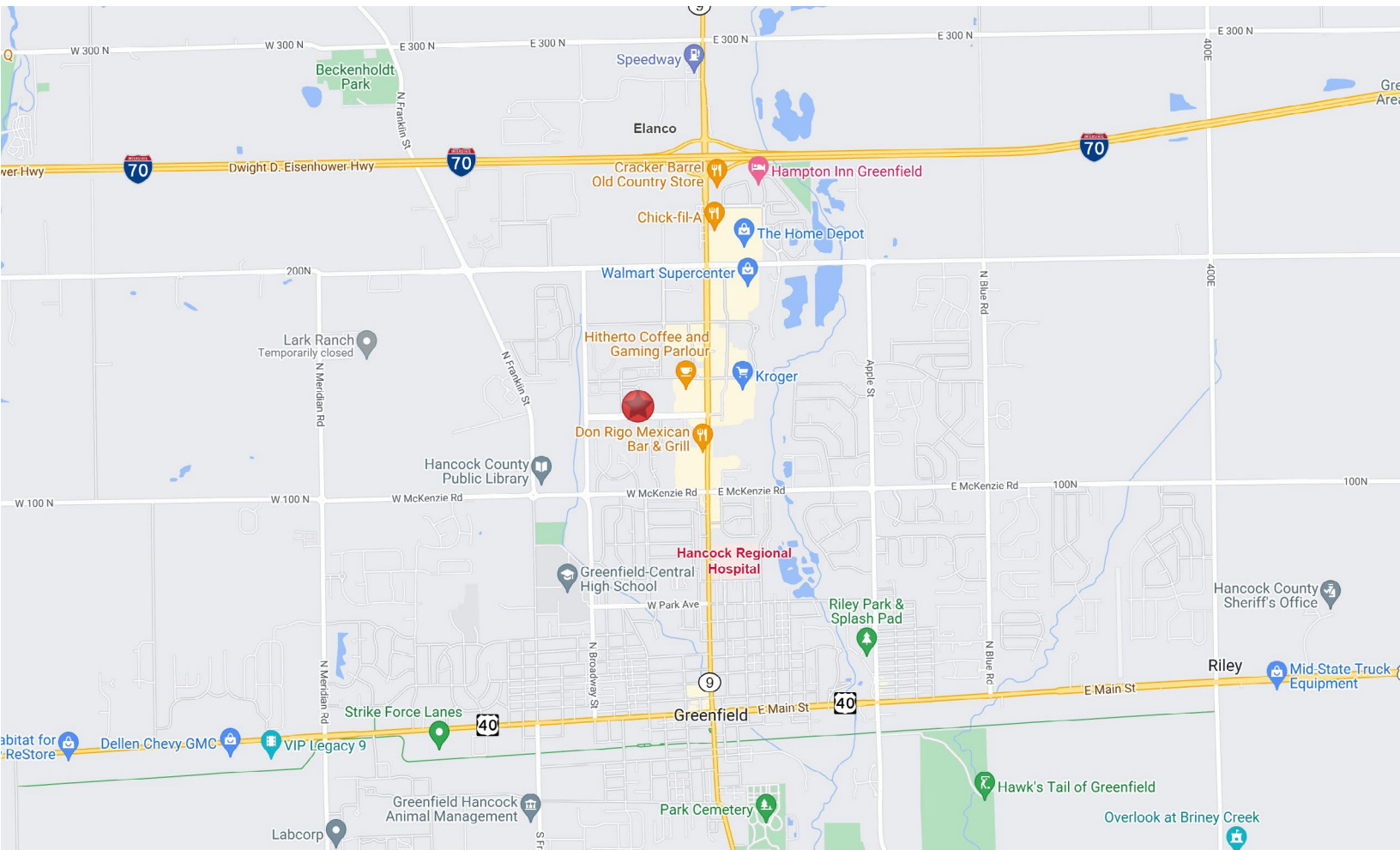
400 W. Green Meadows Dr. | Greenfield, IN 46140



LOCATION OVERVIEW

LAND FOR SALE / OFFICE SPACE FOR LEASE

400 W. Green Meadows Dr. | Greenfield, IN 46140



NACressy is the Global Brokerage Division of Cressy Commercial Real Estate.

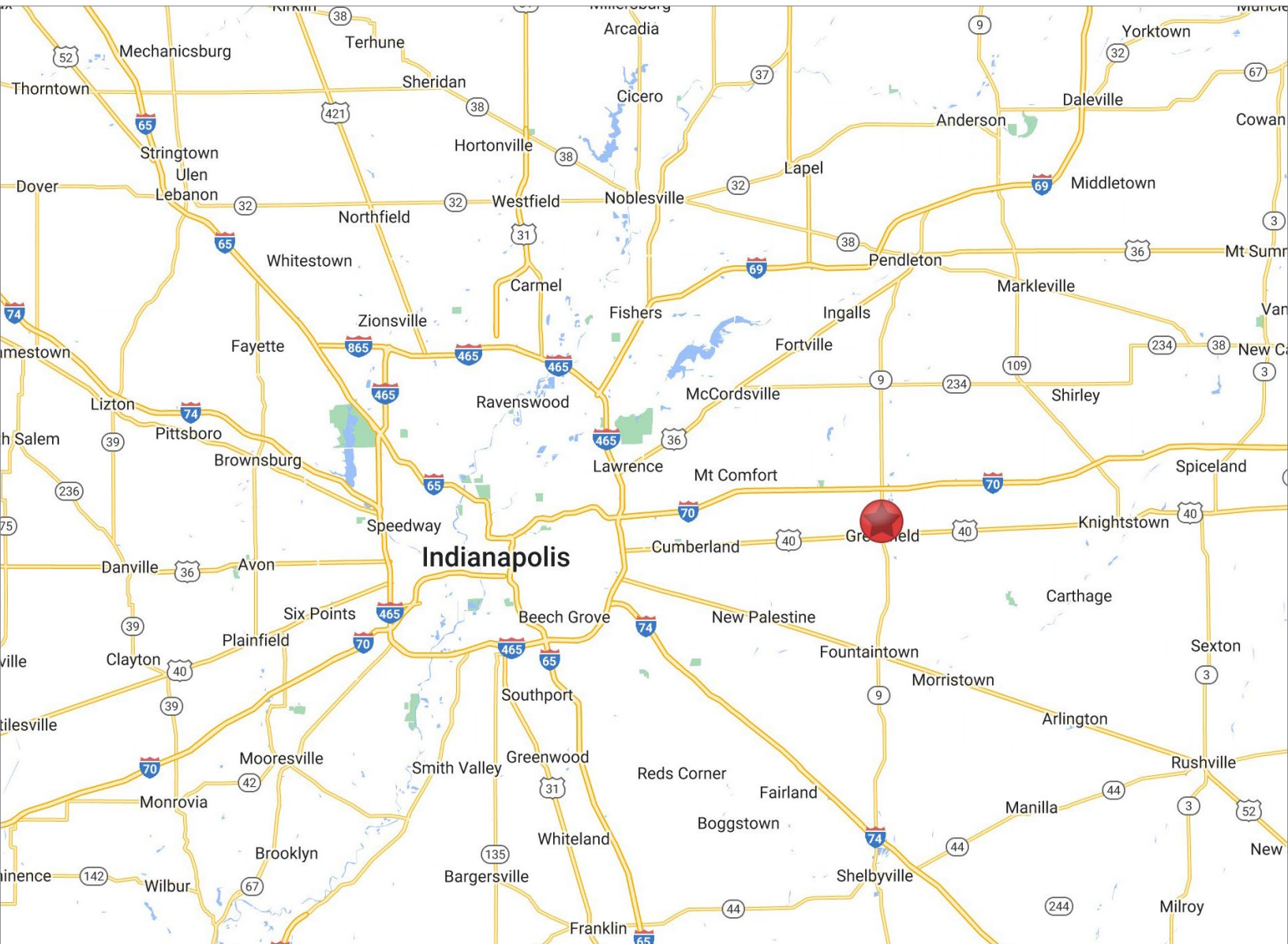
Brian Fitzgerald
Principal, CS Fitzgerald
D 317.509.1192
csfitzgeraldllc@gmail.com

Joe Lonnemann
Vice President
D 317.566.5624
jdl@cressy.com

2025 DEMOGRAPHICS

LAND FOR SALE / OFFICE SPACE FOR LEASE

400 W. Green Meadows Dr. | Greenfield, IN 46140



POPULATION

1 MILE	5,341
3 MILE	30,978
5 MILE	37,024



NUMBER OF HOUSEHOLDS

1 MILE	1,271
3 MILE	8,652
5 MILE	10,638



AVERAGE HOUSEHOLD INCOME

1 MILE	\$105,914
3 MILE	\$104,604
5 MILE	\$108,622



MEDIAN HOME VALUE

1 MILE	\$214,462
3 MILE	\$215,672
5 MILE	\$224,868



is the Global Brokerage Division
of Cressy Commercial Real Estate.

Brian Fitzgerald
Principal, CS Fitzgerald
D 317.509.1192
csfitzgeraldllc@gmail.com

Joe Lonnemann
Vice President
D 317.566.5624
jdl@cressy.com