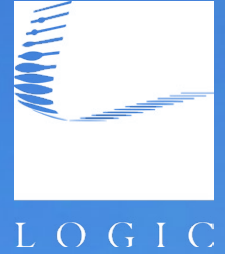


For Lease

Grant Dr. & W. Peckham Ln.



[Click for a Virtual Tour](#)

3680 Grant Dr.
Reno, NV 89509

Casey Prostinak
Vice President
775.813.2866
cprostinak@logicCRE.com
S.0177148.LLC

Landon Gonzalez
Vice President
775.741.6397
lgonzalez@logicCRE.com
S.0179599.LLC

Kami Kaba
Associate
805.459.1236
kkaba@logicCRE.com
S.0197606

Listing Snapshot



\$0.80 - \$1.10 PSF FS*
Lease Rate



± 902 - 1,532 SF
Available Square Footage

Property Highlights

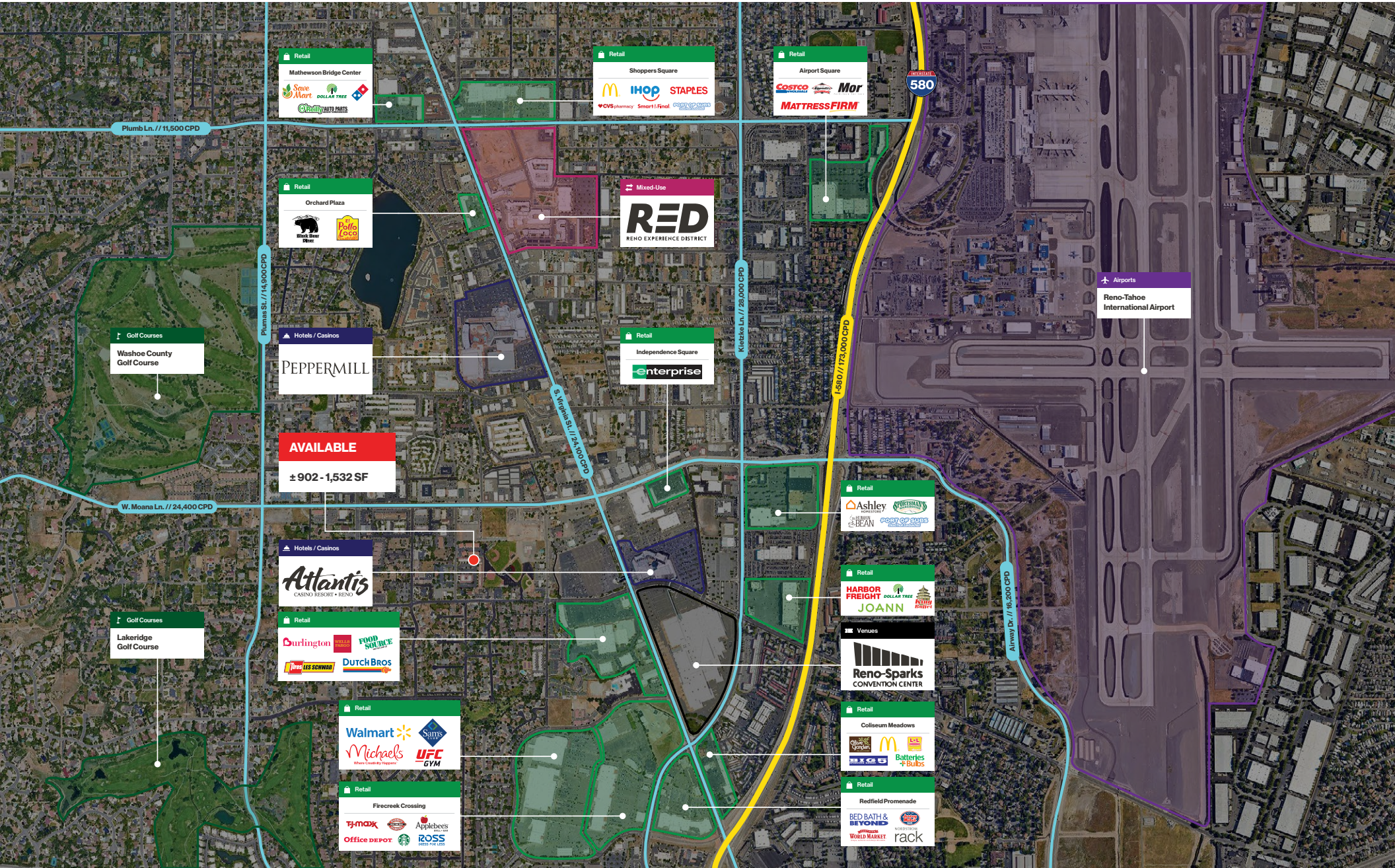
- Multiple layout options and sizes
- Close proximity to restaurants and retail
- Full service leases, less janitorial
- Ample parking on-site plus additional street parking

**All utilities are included in Lease Rate. Tenant is responsible for directly covering the costs of their own internet, phone, and security systems, should they choose to have them. Further details will be outlined in the lease agreement.*

Demographics

	1-mile	3-mile	5-mile
2024 Population	20,393	95,355	217,879
2024 Average Household Income	\$73,912	\$102,512	\$100,544
2024 Total Households	9,165	42,967	93,801





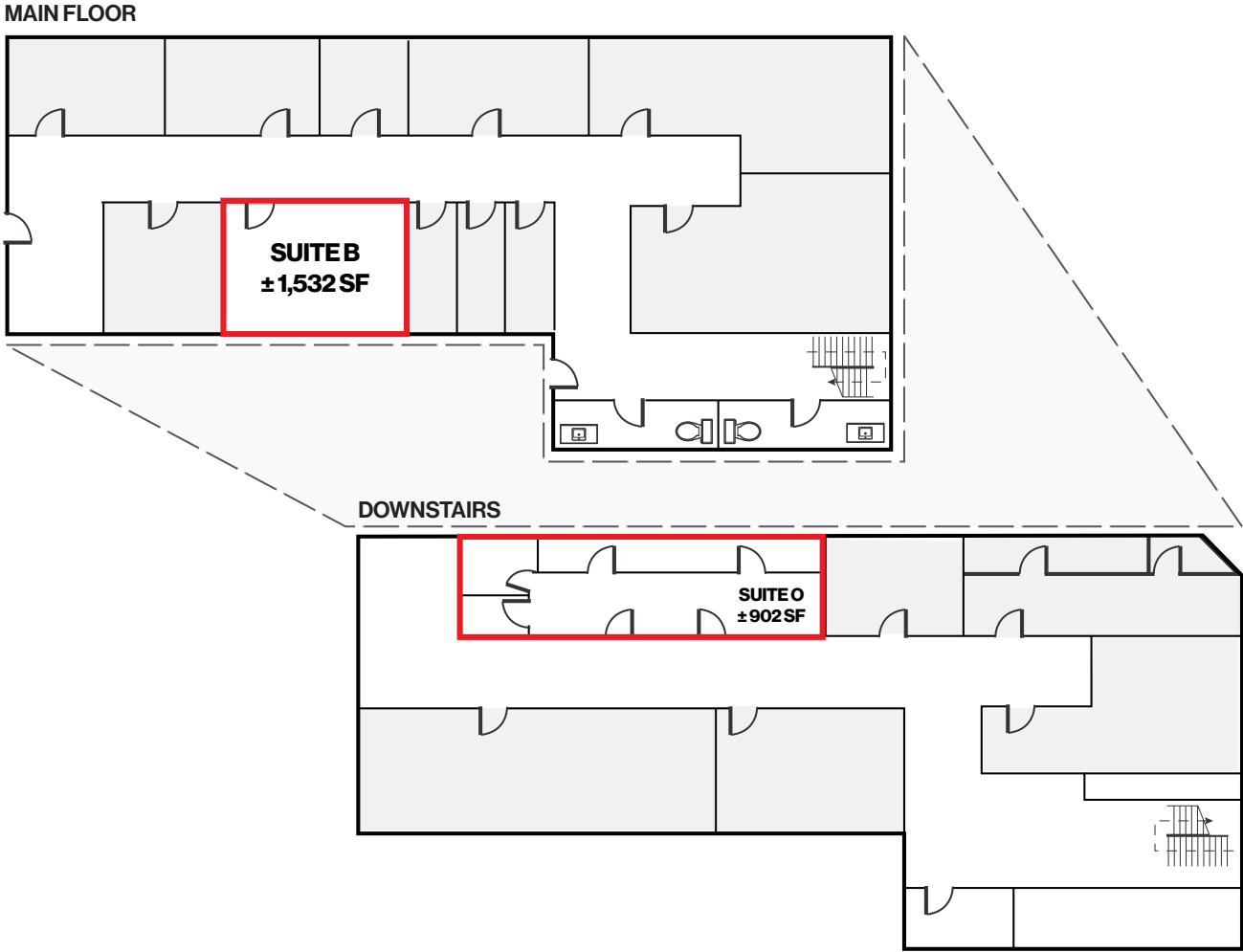




Grant Dr.



Floor Plan



Property Photos



LOGIC Commercial Real Estate

Specializing in Brokerage and Receivership Services



Join our email list and
connect with us on LinkedIn

The information herein was obtained from sources deemed reliable; however LOGIC Commercial Real Estate makes no guarantees, warranties or representation as to the completeness or accuracy thereof.

For inquiries please reach out to our team.

Casey Prostinak

Vice President
775.813.2866
cprostinak@logicCRE.com
S.0177148.LLC

Landon Gonzalez

Vice President
775.741.6397
lgonzalez@logicCRE.com
S.0179599.LLC

Kami Kaba

Associate
805.459.1236
kkaba@logicCRE.com
S.0197606