

1111 SHIVE LANE • SUITE 201  
BOWLING GREEN • KY



**RE/MAX**  
PREFERRED & AUCTION



## ABOUT THE PROPERTY

Beautifully updated commercial condo in Tower Place Condominiums. Perfect for salon, medical office space or professional office space. Located just off Scottsville Road behind Walgreen.

## PROPERTY FEATURES

- 1036 +/- Square Feet
- Luxury Vinyl Plank Floors
- Private Bathroom
- 4-5 Offices
- Private Parking

## CONTACT:



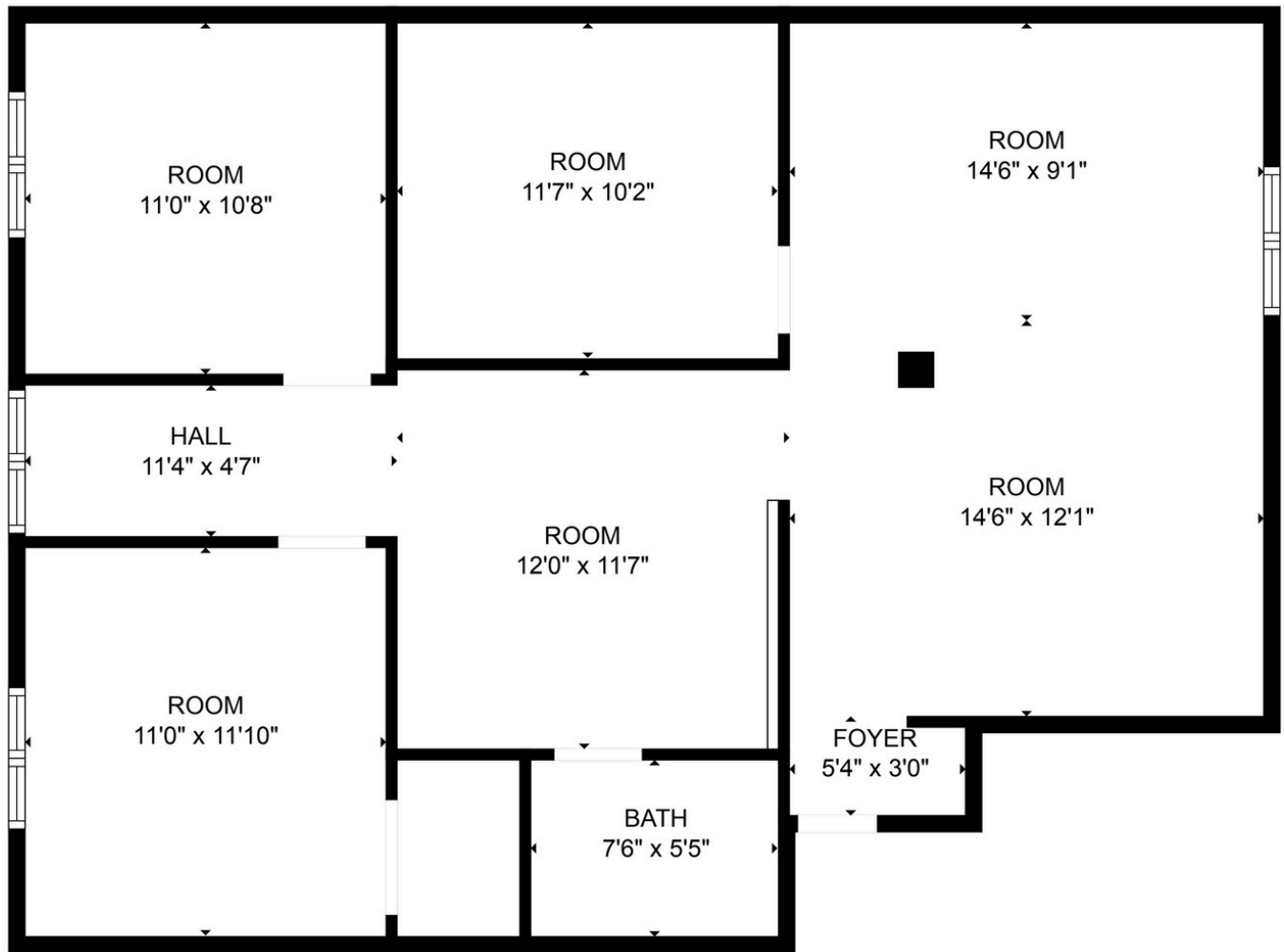
**Michael E. Miller**  
Broker / Auctioneer  
270.792.1093  
MichaelEMiller@me.com

OFFERED AT

**\$195,000**



1111 Shive Lane • Suite 201  
Bowling Green • KY • 42103



**ESTIMATED AREAS**  
 GLA FLOOR 1: 1036 sq. ft EXCLUDED AREAS 0 sq. ft  
 Total GLA 1036 sq. ft, total area 1036 sq. ft