

# FOR LEASE

## 8787 Olive Lane, Santee, Ca 92071



### 60,000 SqFt of Paved / Secured Fenced Yard Area

For more information contact:

**Robbie Cornell**  
robbie@tollercornell.com  
CA Lic # 01702034

**Mick Toller**  
mick@tollercornell.com  
CA Lic # 01355557

# 619-456-2380



**TOLLER CORNELL**  
COMMERCIAL REAL ESTATE



**On Pointe Management**  
YOUR INVESTMENT. OUR PRIORITY.

The information contained herein has been obtained from sources we deem reliable. While we have no reason to doubt its accuracy, we do no guarantee it



# FOR LEASE

## 8787 Olive Lane, Santee, Ca 92071

**Property Type:** Fully paved asphalt and secure lot  
**Available:** 60,000 SqFt fenced and secure yard / parking.  
**Location:** Minutes off Highway 52.  
**Additional Features:** Oversized metal rolling gate for large truck access  
**Lease Rate:** \$27,000.00 Gross



For more information contact:

**Robbie Cornell**  
robbie@tollercornell.com  
CA Lic # 01702034

**Mick Toller**  
mick@tollercornell.com  
CA Lic # 01355557

# 619-456-2380



**TOLLER CORNELL**  
COMMERCIAL REAL ESTATE



**On Pointe Management**  
YOUR INVESTMENT. OUR PRIORITY.

The information contained herein has been obtained from sources we deem reliable. While we have no reason to doubt its accuracy, we do no guarantee it



# FOR LEASE

## 8787 Olive Lane, Santee, Ca 92071



**60,000 SqFt of Paved / Secured Fenced Yard Area**

For more information contact:

**Robbie Cornell**  
robbie@tollercornell.com  
CA Lic # 01702034

**Mick Toller**  
mick@tollercornell.com  
CA Lic # 01355557

# 619-456-2380



**TOLLER CORNELL**  
COMMERCIAL REAL ESTATE



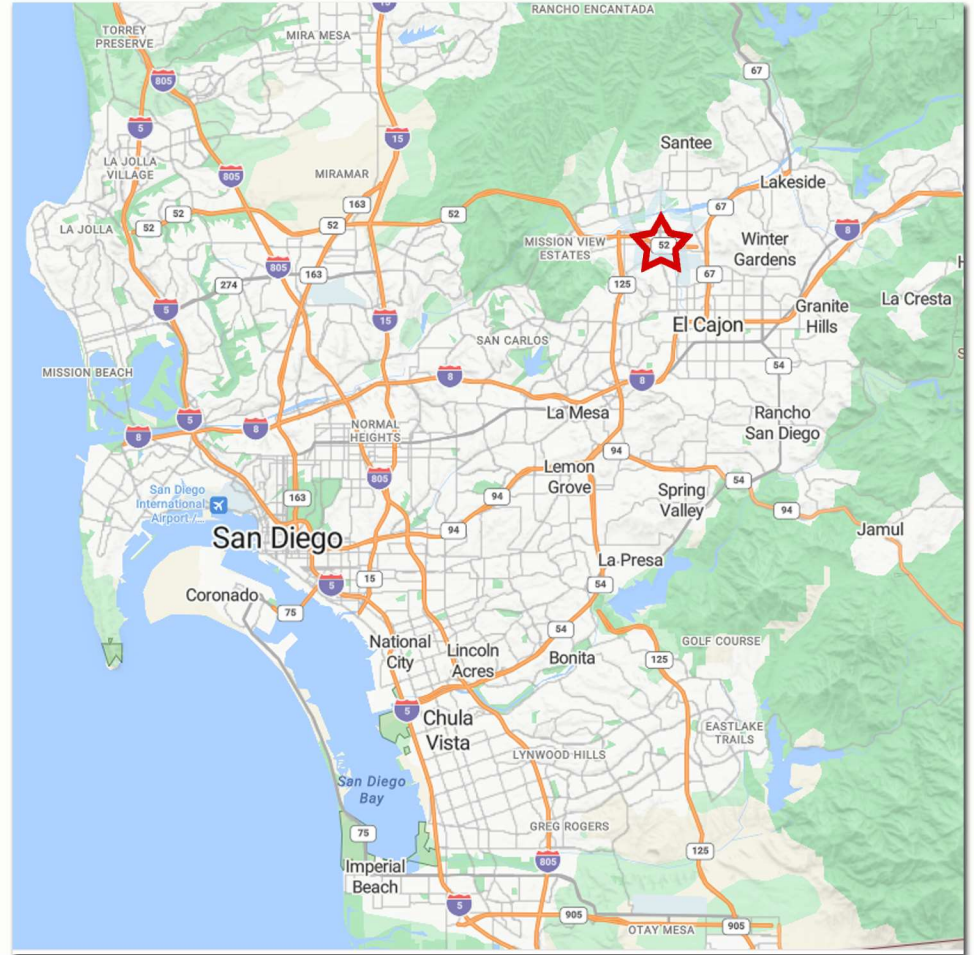
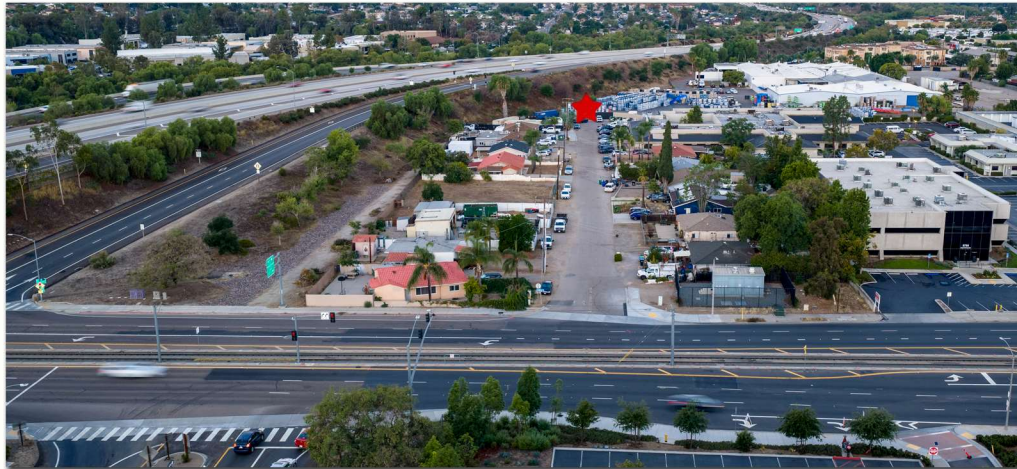
**On Pointe Management**  
YOUR INVESTMENT. OUR PRIORITY.

The information contained herein has been obtained from sources we deem reliable. While we have no reason to doubt its accuracy, we do no guarantee it



# FOR LEASE

## 8787 Olive Lane, Santee, Ca 92071



For more information contact:

**Robbie Cornell**  
robbie@tollercornell.com  
CA Lic # 01702034

**Mick Toller**  
mick@tollercornell.com  
CA Lic # 01355557

# 619-456-2380



**TOLLER CORNELL**  
COMMERCIAL REAL ESTATE



**On Pointe Management**  
YOUR INVESTMENT. OUR PRIORITY.

The information contained herein has been obtained from sources we deem reliable. While we have no reason to doubt its accuracy, we do no guarantee it