

FOR SALE

6891 Seneca Street
Elma, NY



8,448± SF Warehouse on 5.8 ± Acres

Building Features

Building Size	8,448± Sq. Ft.
Lot Size	5.8± Acres

Property Highlights

- Specialized tank wash facility on 5.8± acres
- Designed for diverse cargo with advanced cleaning systems in compliance with all regulations
- Property features four (4) pull-through grade doors: three (3) 12'x12' doors and one (1) 12'x14' door
- 12'-14' clear ceiling heights
- Comprehensive services include multiple cleaning levels, ranging from allergenic-risk to oil-based washes
- Spacious lot accommodates parking, large trucks and trailers, outdoor storage, and future expansion opportunities
- Strategic location on Seneca Street, just north of Jamison Road
- One mile from NYS Route 400 and close to major highways and industrial hubs
- Ideal for: contractors, auto sales, transportation/trucking businesses



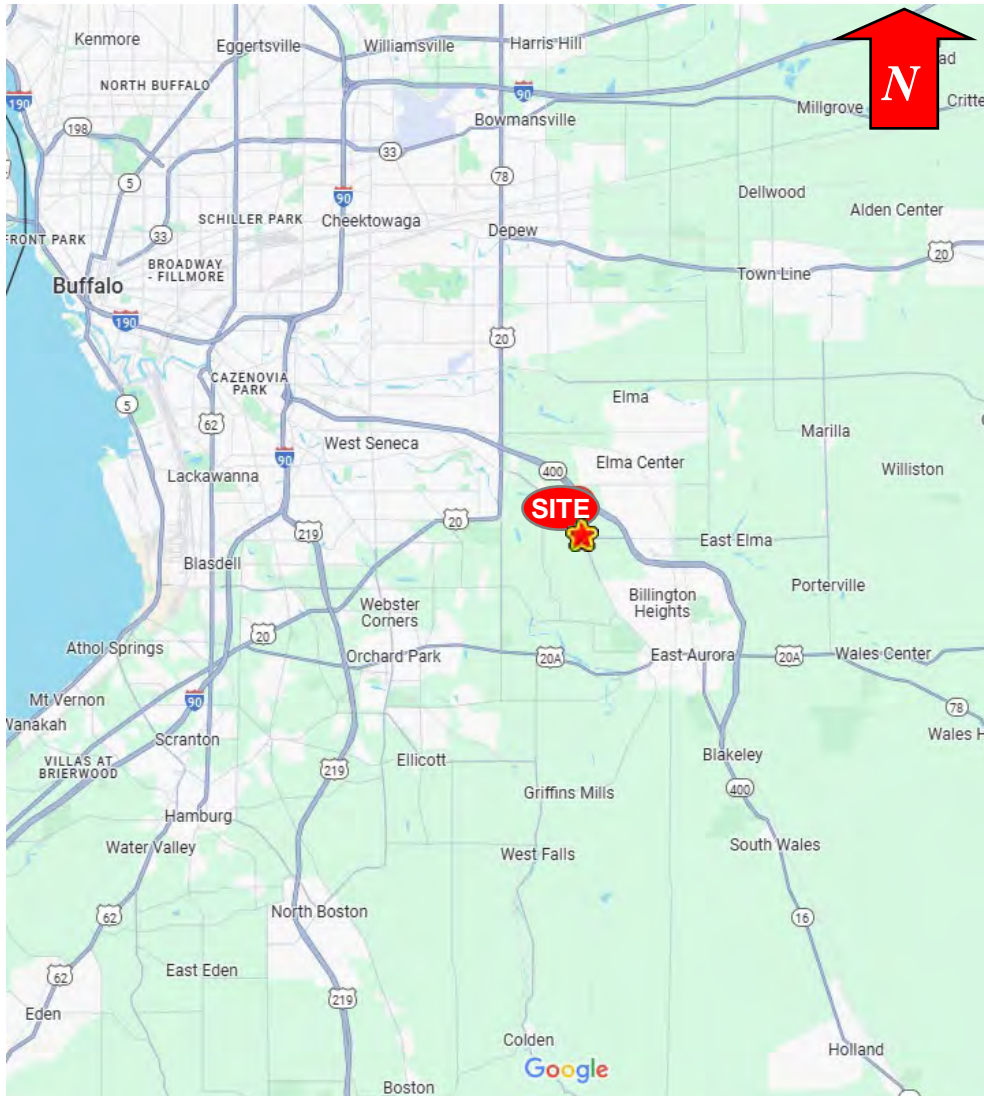
Contact

JEFFREY CLABEAUX
Real Estate Salesperson
+1 716 725 4345
jclabeaux@pyramidbrokerage.com

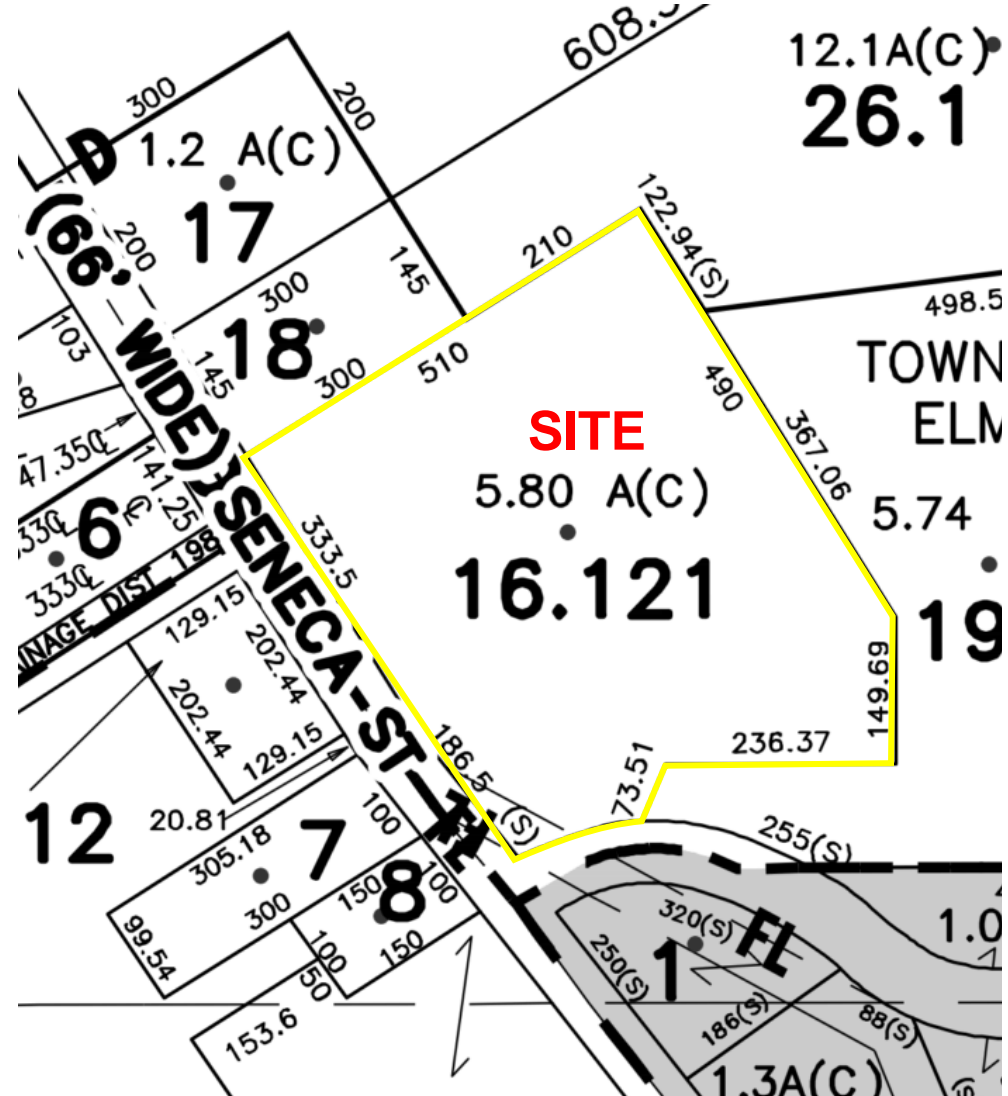
14 Lafayette Square, Suite 1900
Buffalo, New York 14203
+1 716 852 7500
pyramidbrokerage.com

FOR SALE

6891 Seneca Street | Elma, NY



Location Map



Tax Map

FOR SALE

6891 Seneca Street | Elma, NY



Aerial