

1,210 SF OFFICE CONDOMINIUM FOR SALE

OCEANSIDE | CA | 92056

3548

Seagate Way
Suite 220



JUSTIN HALENZA

First Vice President

+1 760 604 4222
justin.halenza@cbre.com

Lic. 01238120

BOB COWAN

First Vice President

+1 760 840 7664
bob.cowan@cbre.com

Lic. 01838109

CBRE

UPGRADE YOUR WORKSPACE:
TAILORED FOR SUCCESS

PROPERTY OVERVIEW

Highlights



Class A office condo with dramatic views



4.0/1,000/SF parking ratio



Prime location with easy access to Hwy 76,
Hwy 78, and I-5



Elevator served



Common area conference room/Kitchen



HVAC Unit replaced in 2022 with a REMO HALO
11-Air purification system



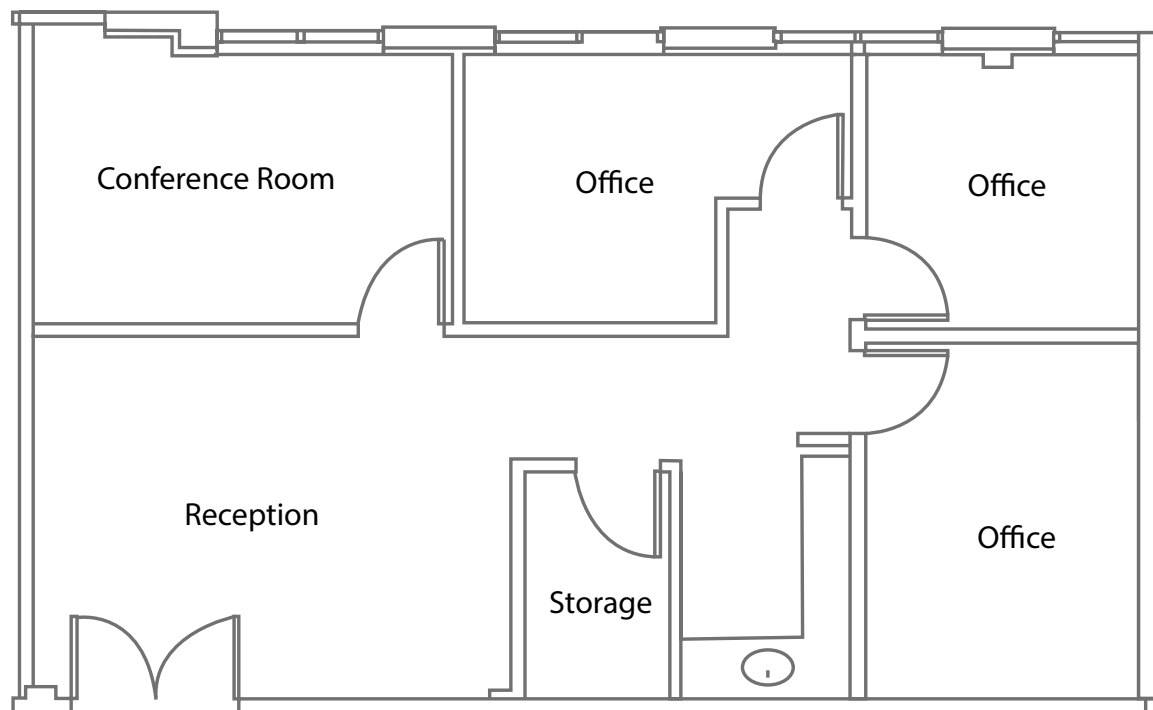
Monthly Association Dues = \$606.00/Mo



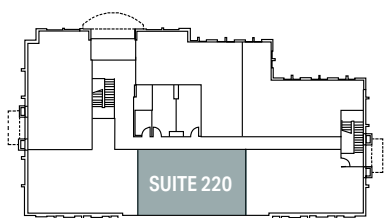
• Upgraded Kitchen Fit and Finish • Upgraded Shutters • Crown molding throughout

FLOOR PLAN

Reception, Private Offices, Kitchenette



SECOND FLOOR PLAN



1,210 SF

SALE PRICE: \$393,250.00

1,210 SF OFFICE CONDOMINIUM FOR SALE

3548

Seagate Way *Suite 220*

OCEANSIDE | CA | 92056

JUSTIN HALENZA

First Vice President

+1 760 604 4222
justin.halenza@cbre.com

Lic. 01238120

BOB COWAN

First Vice President

+1 760 840 7664
bob.cowan@cbre.com

Lic. 01838109

© 2024 CBRE, Inc. All rights reserved. This information has been obtained from sources believed reliable but has not been verified for accuracy or completeness. CBRE, Inc. makes no guarantee, representation or warranty and accepts no responsibility or liability as to the accuracy, completeness, or reliability of the information contained herein. You should conduct a careful, independent investigation of the property and verify all information. Any reliance on this information is solely at your own risk. CBRE and the CBRE logo are service marks of CBRE, Inc. All other marks displayed on this document are the property of their respective owners, and the use of such marks does not imply any affiliation with or endorsement of CBRE. Photos herein are the property of their respective owners. Use of these images without the express written consent of the owner is prohibited.

CBRE