

# FOR LEASE

1,743 SF AVAILABLE

4718 RIVERSTONE BLVD, MISSOURI CITY, TX 77459

**ico**  
COMMERCIAL



DANNA SOSSEN

281.207.3709 | dsossen@icocommercial.com

TIMOTHY BROWN

281.207.3718 | tbrown@icocommercial.com



# FOR LEASE

## 1,743 SF AVAILABLE

4718 RIVERSTONE BLVD, MISSOURI CITY, TX 77459



## OVERVIEW

- Suite A: approximately 1,743 SF
- Located at entrance to Riverstone master-planned community
- Easy access to I-69, Highway 6 and Fort Bend Toll Road
- Close to Methodist and Memorial Hermann Medical Centers
- Upgraded finishes throughout
- Glassed in conference room
- Glass entry, building signage available & ample parking
- Lease Rate: call for pricing



### KEY FACTS: 3 MILE RADIUS

72,257  
Population



3.1  
Average  
Household Size

37.4

Median Age

\$115,545

Median Household  
Income

### BUSINESS



998  
Total Businesses



7,016  
Total Employees

### EMPLOYMENT

74.1%  
White Collar

14.6%  
Blue Collar

11.3%  
Services

3.9%

Unemployment  
Rate

### INCOME



\$115,545

Median Household  
Income



\$49,426

Per Capita  
Income



\$545,952

Median  
Net Worth

DANNA SOSSEN

281.207.3709 | dsossen@icocommercial.com

TIMOTHY BROWN

281.207.3718 | tbrown@icocommercial.com

# FOR LEASE

1,743 SF AVAILABLE

4718 RIVERSTONE BLVD, MISSOURI CITY, TX 77459



## AVAILABILITY

### For Lease

Available SF	Suite	Floor	Divisible	Lease Rate	Lease Type
±1,743 SF	A	1	No		Call for pricing

DANNA SOSSEN

281.207.3709 | dsossen@icocommercial.com

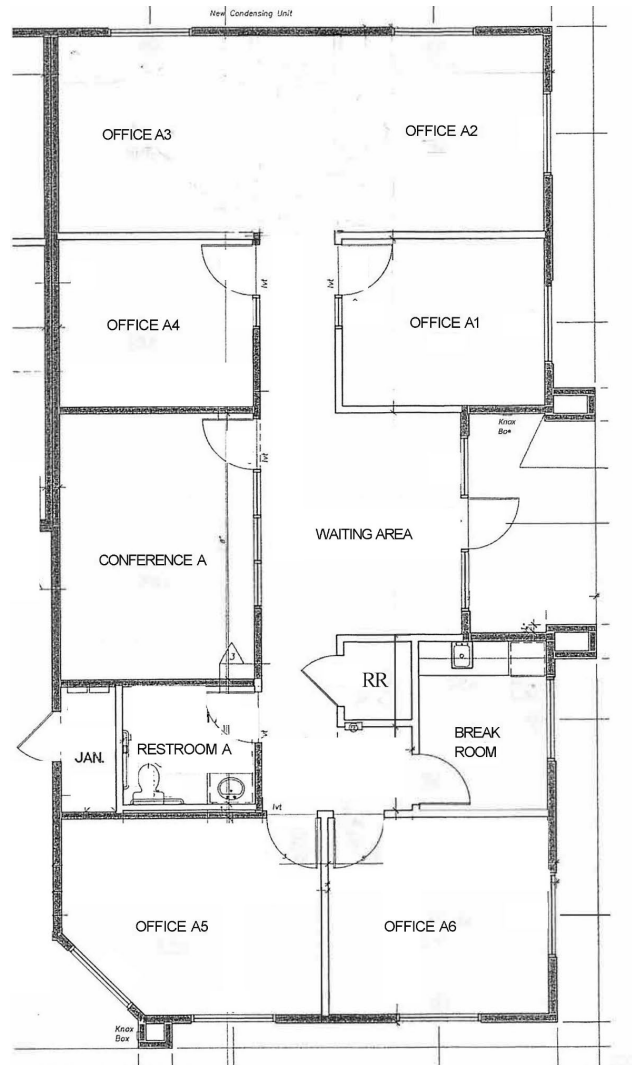
TIMOTHY BROWN

281.207.3718 | tbrown@icocommercial.com

# FOR LEASE

1,743 SF AVAILABLE

4718 RIVERSTONE BLVD, MISSOURI CITY, TX 77459



Suite A: ±1,743 SF

DANNA SOSSEN

281.207.3709 | dsossen@icocommercial.com

TIMOTHY BROWN

281.207.3718 | tbrown@icocommercial.com



# FOR LEASE

1,743 SF AVAILABLE

4718 RIVERSTONE BLVD, MISSOURI CITY, TX 77459

**ico**  
COMMERCIAL

## LOCAL AERIAL



DANNA SOSSEN

281.207.3709 | dsossen@icocommercial.com

TIMOTHY BROWN

281.207.3718 | tbrown@icocommercial.com



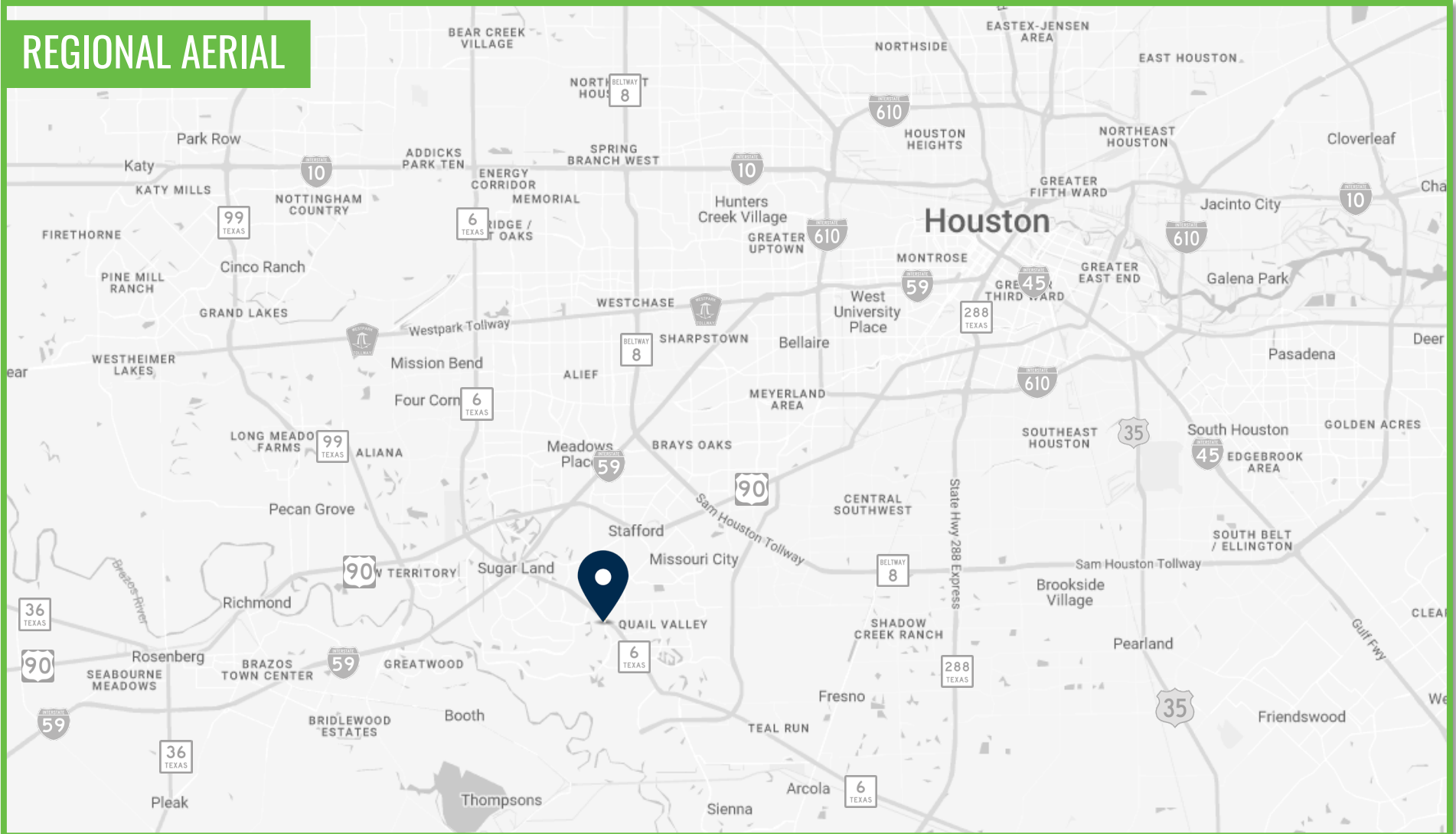
# FOR LEASE

1,743 SF AVAILABLE

4718 RIVERSTONE BLVD, MISSOURI CITY, TX 77459

**ico**  
COMMERCIAL

## REGIONAL AERIAL



DANNA SOSSEN

281.207.3709 | dsossen@icocommercial.com

TIMOTHY BROWN

281.207.3718 | tbrown@icocommercial.com

# FOR LEASE

1,743 SF AVAILABLE

4718 RIVERSTONE BLVD, MISSOURI CITY, TX 77459



## INFORMATION ABOUT BROKERAGE SERVICES

2-10-2025

### TYPES OF REAL ESTATE LICENSE HOLDERS:

- A BROKER is responsible for all brokerage activities, including acts performed by sales agents sponsored by the broker.
- A SALES AGENT must be sponsored by a broker and works with clients on behalf of the broker.

### A BROKER'S MINIMUM DUTIES REQUIRED BY LAW (A client is the person or party that the broker represents):

- Put the interests of the client above all others, including the broker's own interests;
- Inform the client of any material information about the property or transaction received by the broker;
- Answer the client's questions and present any offer to or counter-offer from the client; and
- Treat all parties to a real estate transaction honestly and fairly.

### A LICENSE HOLDER CAN REPRESENT A PARTY IN A REAL ESTATE TRANSACTION:

**AS AGENT FOR OWNER (SELLER/LANDLORD):** The broker becomes the property owner's agent through an agreement with the owner, usually in a written listing to sell or property management agreement. An owner's agent must perform the broker's minimum duties above and must inform the owner of any material information about the property or transaction known by the agent, including information disclosed to the agent or subagent by the buyer or buyer's agent. An owner's agent fees are not set by law and are fully negotiable.

**AS AGENT FOR BUYER/TENANT:** The broker becomes the buyer/tenant's agent by agreeing to represent the buyer, usually through a written representation agreement. A buyer's agent must perform the broker's minimum duties above and must inform the buyer of any material information about the property or transaction known by the agent, including information disclosed to the agent by the seller or seller's agent. **A buyer/tenant's agent fees are not set by law and are fully negotiable.**

**AS AGENT FOR BOTH - INTERMEDIARY:** To act as an intermediary between the parties the broker must first obtain the written agreement of each party to the transaction. The written agreement must state who will pay the broker and, in conspicuous bold or underlined print, set forth the broker's obligations as an intermediary. A broker who acts as an intermediary:

- Must treat all parties to the transaction impartially and fairly;
- May, with the parties' written consent, appoint a different license holder associated with the broker to each party (owner and buyer) to communicate with, provide opinions and advice to, and carry out the instructions of each party to the transaction.
- Must not, unless specifically authorized in writing to do so by the party, disclose:
  - that the owner will accept a price less than the written asking price;
  - that the buyer/tenant will pay a price greater than the price submitted in a written offer; and
  - any confidential information or any other information that a party specifically instructs the broker in writing not to disclose, unless required to do so by law.

**AS SUBAGENT:** A license holder acts as a subagent when aiding a buyer in a transaction without an agreement to represent the buyer. A subagent can assist the buyer but does not represent the buyer and must place the interests of the owner first.

### TO AVOID DISPUTES, ALL AGREEMENTS BETWEEN YOU AND A BROKER SHOULD BE IN WRITING AND CLEARLY ESTABLISH:

- The broker's duties and responsibilities to you, and your obligations under the representation agreement.
- Who will pay the broker for services provided to you, when payment will be made and how the payment will be calculated

**LICENSE HOLDER CONTACT INFORMATION:** This notice is being provided for information purposes. It does not create an obligation for you to use the broker's services. Please acknowledge receipt of this notice below and retain a copy for your records.

DANNA SOSSEN

281.207.3709 | dsossen@icocommercial.com

TIMOTHY BROWN

281.207.3718 | tbrown@icocommercial.com

ICO COMMERCIAL - CORPORATE OFFICE

2333 Town Center Drive, Suite 300, Sugar Land, TX 77478