

Stuart Ventures Palm City Warehouses

5,525 - 83,200 SF
of Industrial Space Available

Strategically located in the highly desirable Treasure Coast
Commerce Center between I95 and the Florida Turnpike.

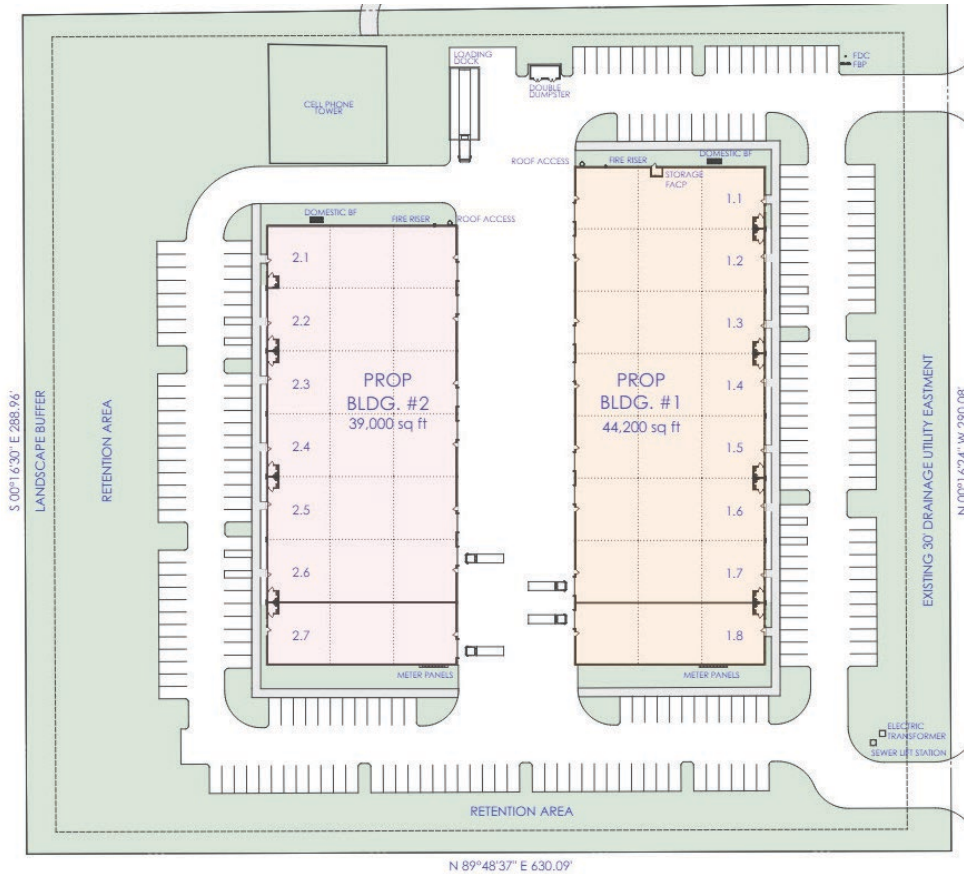
Call today for more information.



**Christenson
Commercial**
REAL ESTATE

759 S. FEDERAL HWY • SUITE 217 • STUART, FL 34994

Derrick Christenson
Manager/Broker
Christenson Commercial Real Estate, LLC
Derricksoldit@aol.com
☎ +1.772.419.5076
☎ +1.772.201.3154



the offering.

Introducing Stuart Ventures Business Park located in Palm City, FL. This new office/Warehouse project features the latest reinforced concrete construction. The buildings also feature, impact glass storefronts, 3-phase electric, 12x14 overhead doors, use of a truck dock, 24ft ceilings and the latest fire suppression system. Stuart Ventures consists of two buildings, (Building 1) 44,200/SF and (Building 2) 39,000/SF for a total of 83,200/SF. Strategically located near I-95 and the Florida Turnpike.

Flexible lease terms and pre-leasing now for Spring 2025.

Highlights

- ✓ Flexible General Industrial zoning
- ✓ Near I-95 and the Florida Turnpike.
- ✓ Pre-leasing now for Spring 2025
- ✓ Nearby highway, rail and seaport connections.
- ✓ Heavy 3-phase power
- ✓ Build to suit and shell options available 5,525 to 83,200/SF

This information has been secured from sources we believe to be reliable but we make no representations or warranties, expressed or implied, as to the accuracy of the information. Buyer must verify the information and bears all risk for any inaccuracies.

the specs.

Available SF **5,525 - 83,200 SF**

Year Available 2025

Clear Height 24'

Drive In Bays 15

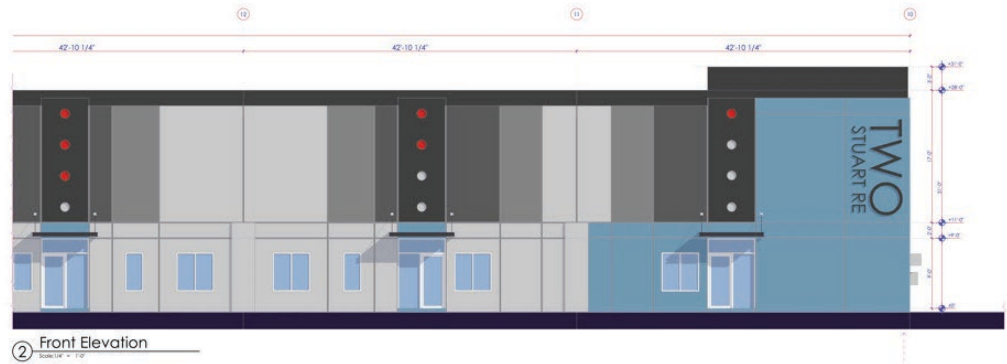
Exterior Dock Doors 1

Construction Reinforced Concrete

Lot Size 8.35 AC

Zoning Description Industrial

Lease Terms Negotiable



building 1



building 2



the demographics.

In 2022, Martin County, FL had a population of 159k people with a median age of 53.2 and a median household income of \$77,894. Between 2021 and 2022 the population of Martin County, FL grew from 158,323 to 159,399, a 0.68% increase and its median household income grew from \$69,769 to \$77,894, a 11.6% increase.

Population

159,399

2022 Consensus
+0.68% 1-Year Growth

Median Age

53.2

+0.567% 1- Year Increase

Income

\$77,894

2022 Median Household Income
11.6% 1-Year Growth

Unemployment

3.2%

Lowest on the Treasure Coast

Workforce

2,533

Number of Martin Countians ready
for work. (February 2024)

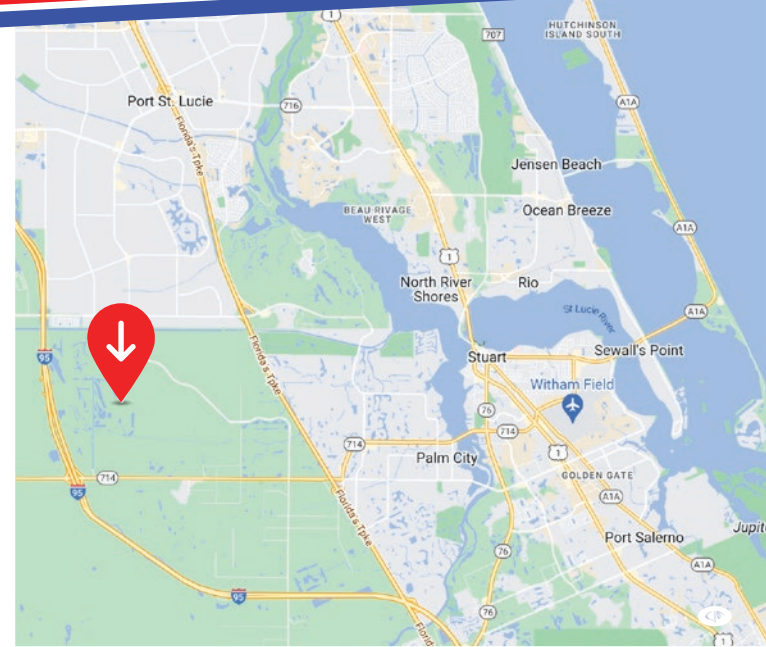
Jobs

76,069

Martin County companies are
currently employing more than
76,996 talented team members.
(December 2023).

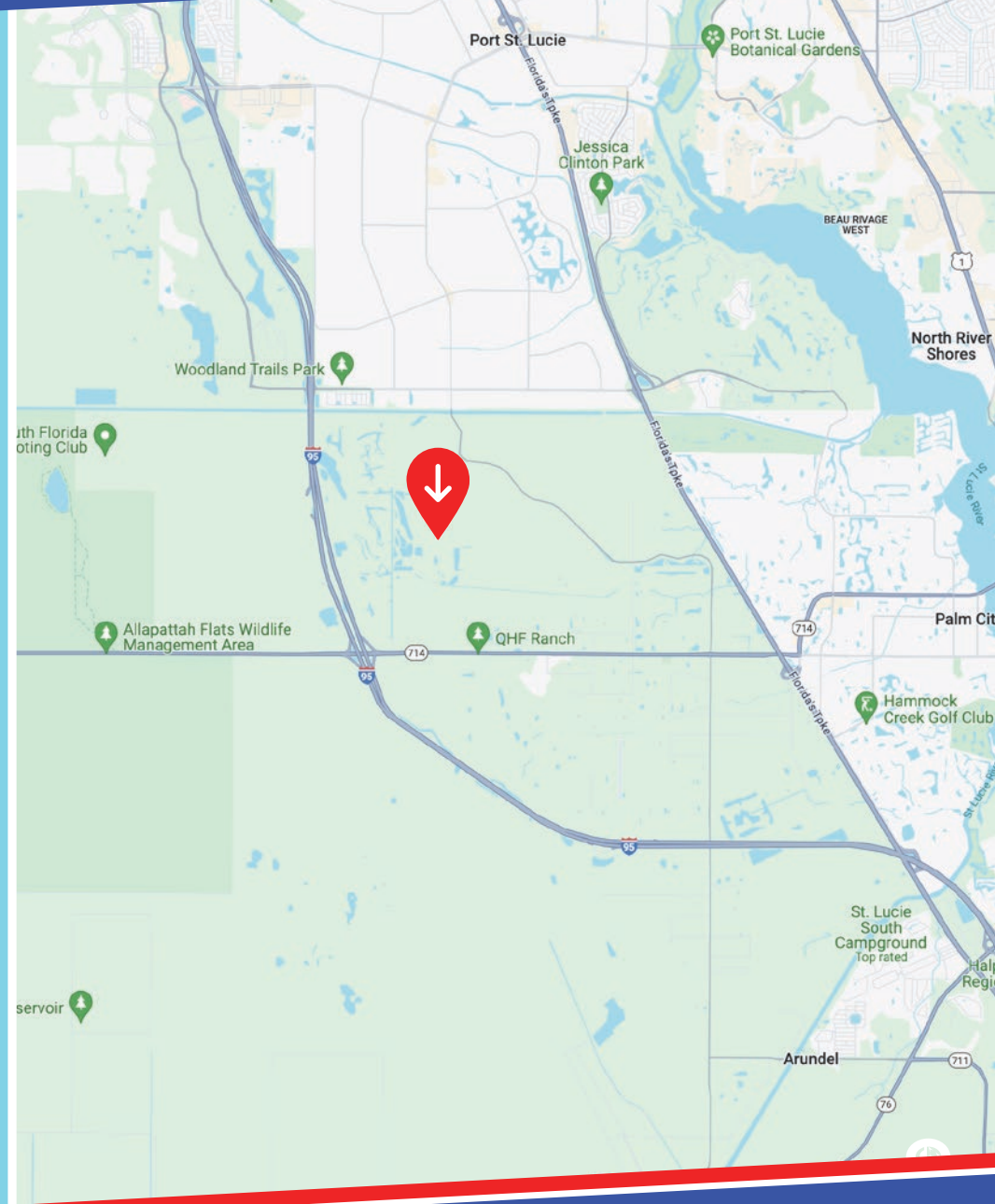
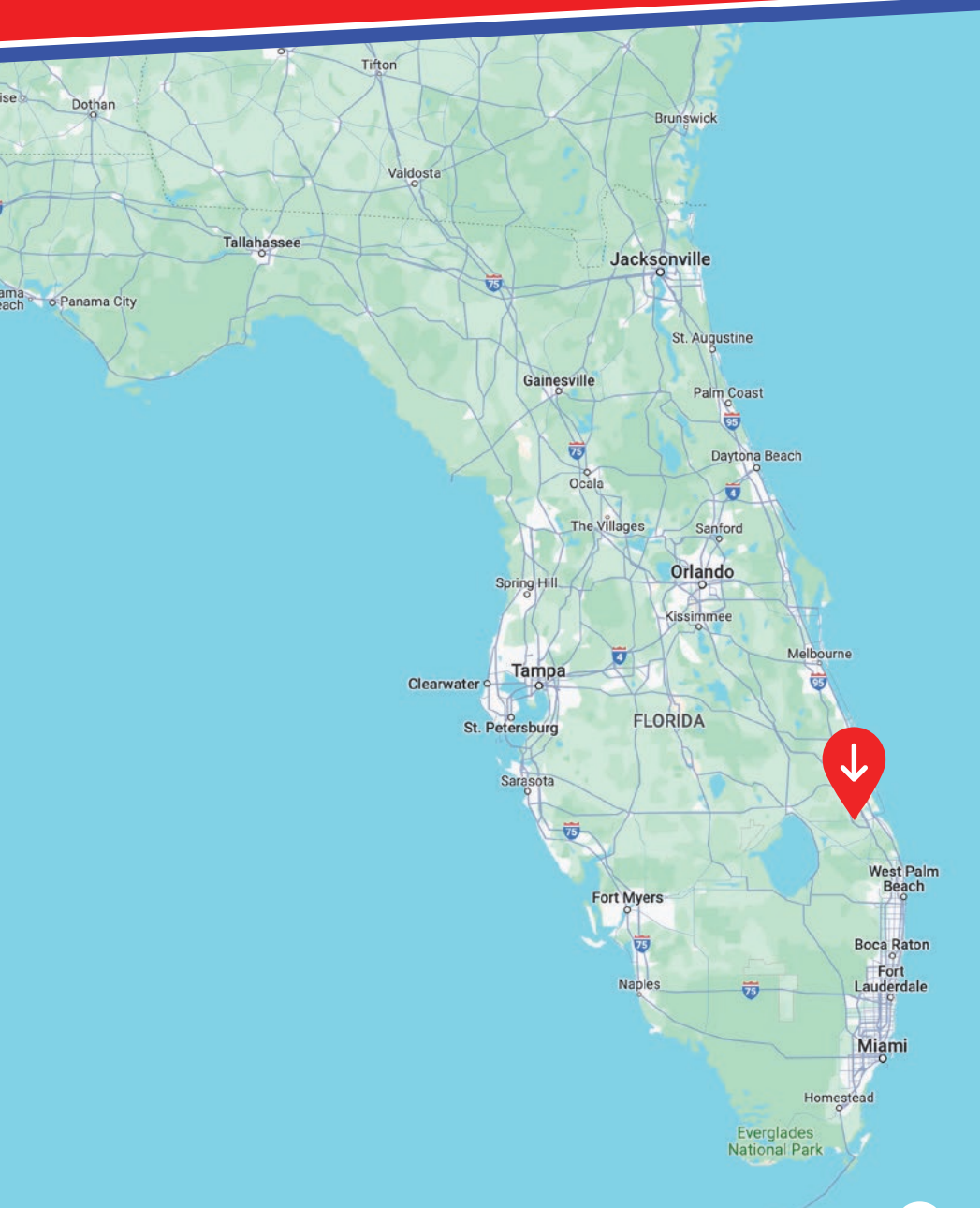
MORE DEMOGRAPHIC INFO

Source: datausa.io



Stuart Ventures Palm City Warehouses

1910 SW Poma Drive | Palm City, FL

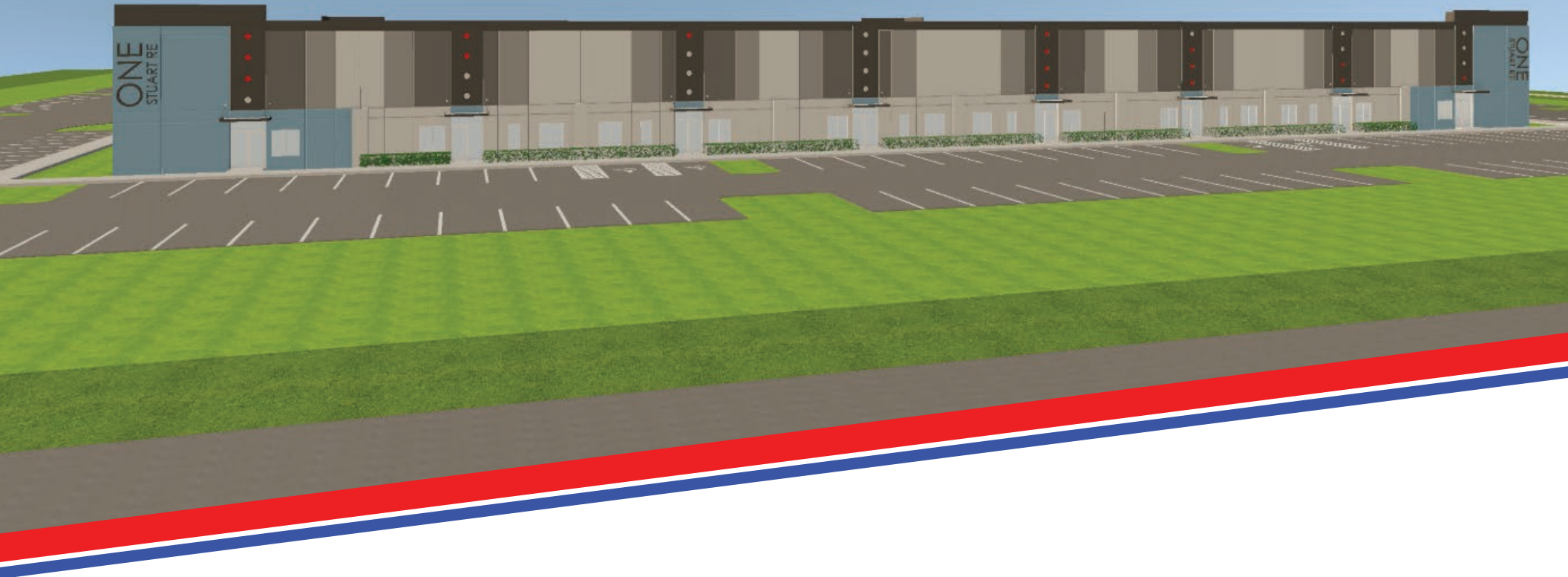


Christenson
Commercial
REAL ESTATE

Derrick Christenson
Manager/Broker
Christenson Commercial Real Estate, LLC
Derricksoldit@aol.com
☎ +1.772.419.5076
☎ +1.772.201.3154

Stuart Ventures Palm City Warehouses

5,525–83,200 SF
of Industrial Space Available



**Christenson
Commercial**
REAL ESTATE

759 S. FEDERAL HWY • SUITE 217 • STUART, FL 34994

Derrick Christenson

Manager/Broker

Christenson Commercial Real Estate, LLC

Derricksoldit@aol.com

+1.772.419.5076

+1.772.201.3154