

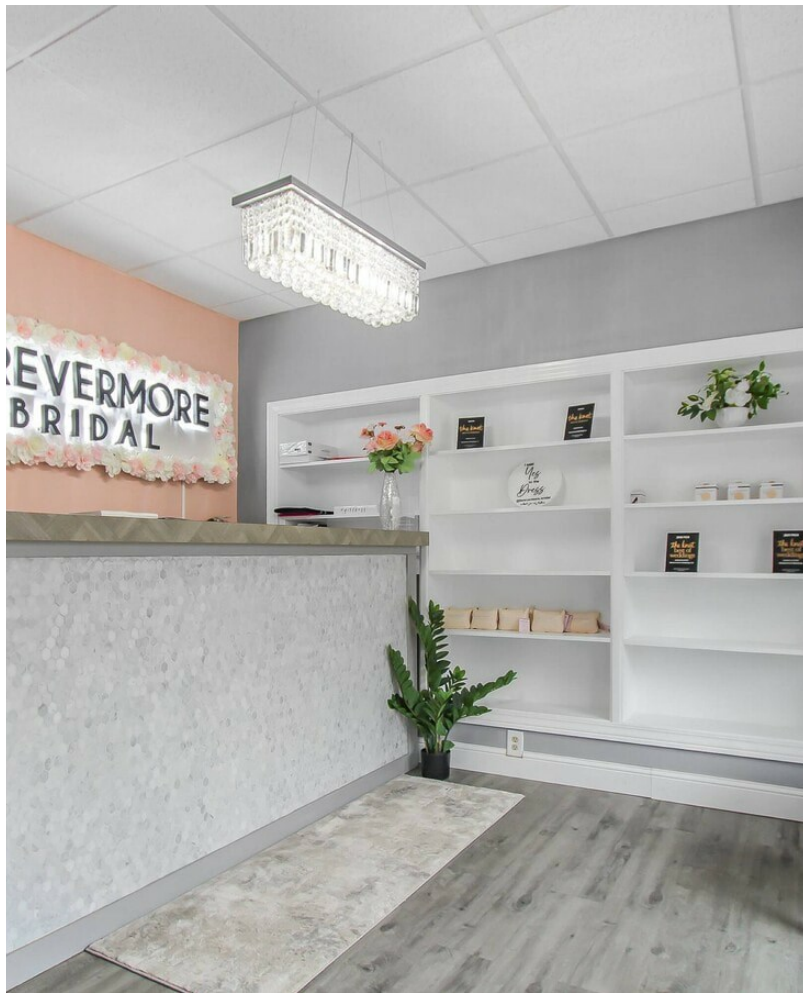
Library Square

911 Madison Ave, Toledo, OH 43604

CRANE
DEVELOPMENT LTD

Lauren Wishart

Crane Development
701 Jefferson Ave, Suite 301, Toledo, OH 43604
lwishart@cranedevlopment.com
(419) 482-8353



Library Square

\$12.50 /SF/YR

This 2,400 SF street-level retail space offers excellent visibility and easy access in a high-traffic area. Previously a bridal boutique, it's well-maintained and move-in ready with a clean storefront, prominent display windows, and an open layout. Centrally located and just steps from Huntington Center Arena, Glass City Convention Center, Fifth Third Field, and the vibrant Uptown and Warehouse Districts—this location puts your business in the heart of the action.

- Move-In Ready
- Fully Finished Retail Space
- New Flooring
- Built-in Shelving
- Expansive Window Frontage
- Easily Converted from Retail to Office

For more information visit:

<https://www.loopnet.com/Listing/911-Madison-Ave-Toledo-OH/37510710/>



Rental Rate: \$12.50 /SF/YR

Min. Divisible: 2,400 SF

Property Type: Retail

Apartment Style: Low Rise

Year Built: 2021

Walk Score ®: 87 (Very Walkable)

Rental Rate Mo: \$1.04 /SF/MO

1st Floor Ste 100

Space Available	2,400 - 3,750 SF
Rental Rate	\$12.50 /SF/YR
Date Available	Now
Service Type	Modified Gross
Built Out As	Standard Retail
Space Type	Relet
Space Use	Retail
Lease Term	Negotiable

This 2,400 SF street-level retail space offers excellent visibility and easy access in a high-traffic area. Previously a bridal boutique, it's well-maintained and move-in ready with a clean storefront, prominent display windows, and an open layout.



911 Madison Ave, Toledo, OH 43604

This 2,400 SF street-level retail space offers excellent visibility and easy access in a high-traffic area. Previously a bridal boutique, it's well-maintained and move-in ready with a clean storefront, prominent display windows, and an open layout. Centrally located and just steps from Huntington Center Arena, Glass City Convention Center, Fifth Third Field, and the vibrant Uptown and Warehouse Districts—this location puts your business in the heart of the action.

Property Photos



Property Photos



Property Photos



Building Photo

911 Madison 1st Floor

909 Madison 1st Floor

909 Madison Basement

