

# RETAIL/OFFICE



**FOR LEASE - 2,316 SF**



## Former Verizon Store

20820 S Avalon Blvd, Carson, CA 90746

### Property Overview

Fully Renovated Retail Store Available in the Highly Desirable Southbay Pavilion Mall area. Adjacent to IKEA, 24-Hour Fitness, Starbucks, AT&T, Ike's Love & Sandwiches, Everytable, Tokyo Grill, FedEx and many more. Perfect for Wireless Mobile Phone Store, Eyeglasses, Beauty Supply, Quick Money Store, Bank or Credit Union, Vitamins & Nutrition, Boutique Brand Clothing Store, Real Estate, Insurance, etc

### Property Highlights

- High Quality Center Professionally Managed
- Directly Off the 405 Fwy @ Avalon Blvd Exit
- Prominent Endcap Signage with 24k Vehicles/Day
- Space Buildout in Immaculate Condition

### OFFERING SUMMARY

Lease Rate:	\$4.75 SF/month (NNN)
Building Size:	6,609 SF
Available For Lease:	2,316 SF
Parking:	31 Spaces (5.1/1,000)



COMMERCIAL REAL ESTATE SERVICES, WORLDWIDE

www.naicapital.com

#### Todd Rizzardi

Senior Associate | 310.310.1227  
trizzardi@naicapital.com | CalDRE #01506894

NO WARRANTY, EXPRESS OR IMPLIED, IS MADE AS TO THE ACCURACY OF THE INFORMATION CONTAINED HEREIN. THIS INFORMATION IS SUBMITTED SUBJECT TO ERRORS, OMISSIONS, CHANGE OF PRICE, RENTAL OR OTHER CONDITIONS, WITHDRAWAL WITHOUT NOTICE, AND IS SUBJECT TO ANY SPECIAL LISTING CONDITIONS IMPOSED BY OUR PRINCIPALS. COOPERATING BROKERS, BUYERS, TENANTS AND OTHER PARTIES WHO RECEIVE THIS DOCUMENT SHOULD NOT RELY ON IT, BUT SHOULD USE IT AS A STARTING POINT OF ANALYSIS, AND SHOULD INDEPENDENTLY CONFIRM THE ACCURACY OF THE INFORMATION CONTAINED HEREIN THROUGH A DUE DILIGENCE REVIEW OF THE BOOKS, RECORDS, FILES AND DOCUMENTS THAT CONSTITUTE RELIABLE SOURCES OF THE INFORMATION DESCRIBED HEREIN. LOGOS ARE FOR IDENTIFICATION PURPOSES ONLY AND MAY BE TRADEMARKS OF THEIR RESPECTIVE COMPANIES. NAI CAPITAL, INC. CA BRE LIC. #01990696.

# RETAIL/OFFICE



**FOR LEASE - 2,316 SF**



COMMERCIAL REAL ESTATE SERVICES, WORLDWIDE

www.naicapital.com

**Todd Rizzardi**

Senior Associate | 310.310.1227

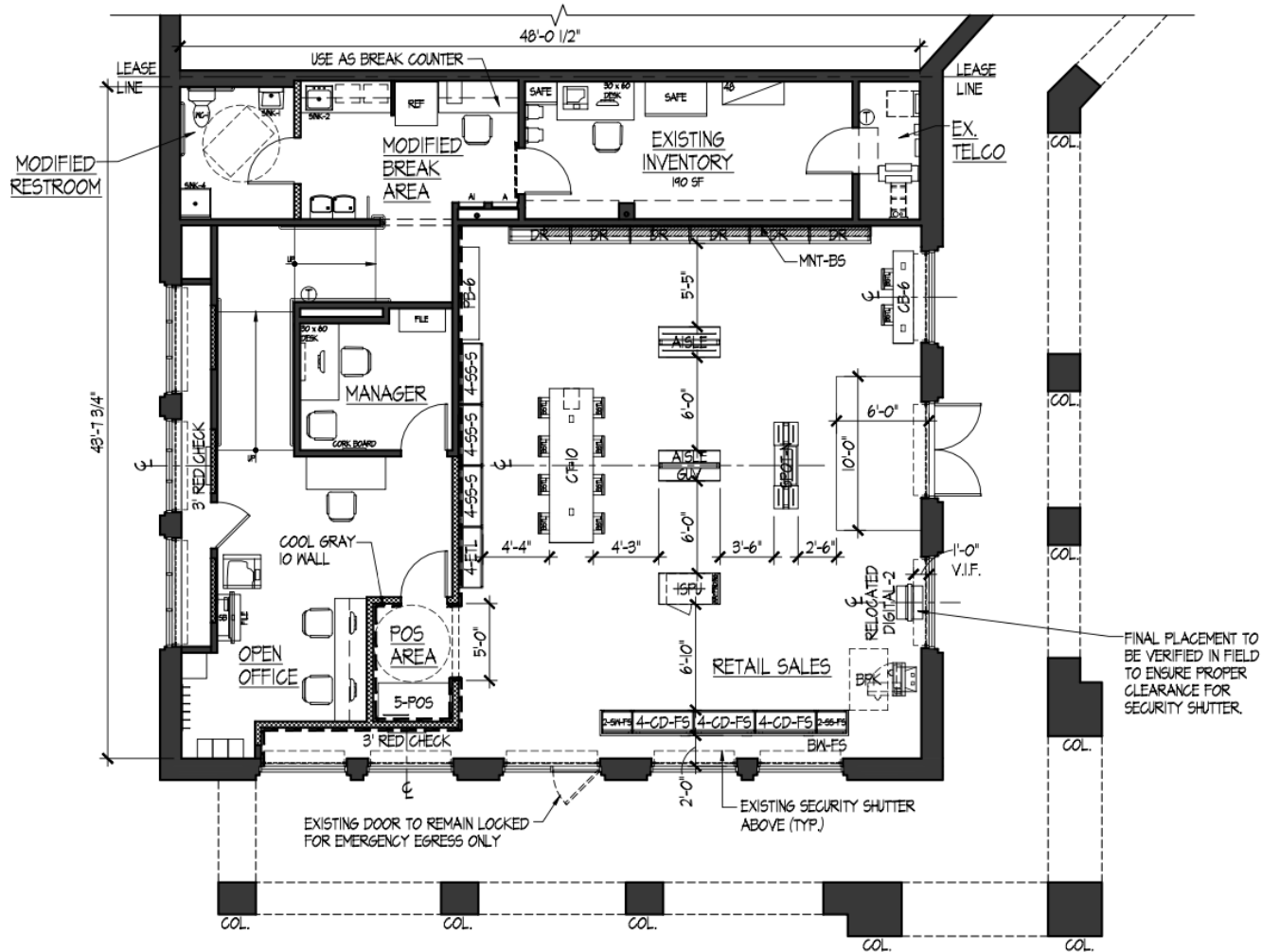
trizzardi@naicapital.com | CalDRE #01506894

NO WARRANTY, EXPRESS OR IMPLIED, IS MADE AS TO THE ACCURACY OF THE INFORMATION CONTAINED HEREIN. THIS INFORMATION IS SUBMITTED SUBJECT TO ERRORS, OMISSIONS, CHANGE OF PRICE, RENTAL OR OTHER CONDITIONS, WITHDRAWAL WITHOUT NOTICE, AND IS SUBJECT TO ANY SPECIAL LISTING CONDITIONS IMPOSED BY OUR PRINCIPALS. COOPERATING BROKERS, BUYERS, TENANTS AND OTHER PARTIES WHO RECEIVE THIS DOCUMENT SHOULD NOT RELY ON IT, BUT SHOULD USE IT AS A STARTING POINT OF ANALYSIS, AND SHOULD INDEPENDENTLY CONFIRM THE ACCURACY OF THE INFORMATION CONTAINED HEREIN THROUGH A DUE DILIGENCE REVIEW OF THE BOOKS, RECORDS, FILES AND DOCUMENTS THAT CONSTITUTE RELIABLE SOURCES OF THE INFORMATION DESCRIBED HEREIN. LOGOS ARE FOR IDENTIFICATION PURPOSES ONLY AND MAY BE TRADEMARKS OF THEIR RESPECTIVE COMPANIES. NAI CAPITAL, INC. CA BRE LIC. #01990696.

# RETAIL/OFFICE



**FOR LEASE - 2,316 SF**



COMMERCIAL REAL ESTATE SERVICES, WORLDWIDE

www.naicapital.com

**Todd Rizzardi**

Senior Associate | 310.310.1227

trizzardi@naicapital.com | CalDRE #01506894

NO WARRANTY, EXPRESS OR IMPLIED, IS MADE AS TO THE ACCURACY OF THE INFORMATION CONTAINED HEREIN. THIS INFORMATION IS SUBMITTED SUBJECT TO ERRORS, OMISSIONS, CHANGE OF PRICE, RENTAL OR OTHER CONDITIONS, WITHDRAWAL WITHOUT NOTICE, AND IS SUBJECT TO ANY SPECIAL LISTING CONDITIONS IMPOSED BY OUR PRINCIPALS, COOPERATING BROKERS, BUYERS, TENANTS AND OTHER PARTIES WHO RECEIVE THIS DOCUMENT SHOULD NOT RELY ON IT, BUT SHOULD USE IT AS A STARTING POINT OF ANALYSIS, AND SHOULD INDEPENDENTLY CONFIRM THE ACCURACY OF THE INFORMATION CONTAINED HEREIN THROUGH A DUE DILIGENCE REVIEW OF THE BOOKS, RECORDS, FILES AND DOCUMENTS THAT CONSTITUTE RELIABLE SOURCES OF THE INFORMATION DESCRIBED HEREIN. LOGOS ARE FOR IDENTIFICATION PURPOSES ONLY AND MAY BE TRADEMARKS OF THEIR RESPECTIVE COMPANIES. NAI CAPITAL, INC. CA BRE LIC. #01990696.

# RETAIL/OFFICE



**FOR LEASE - 2,316 SF**



COMMERCIAL REAL ESTATE SERVICES, WORLDWIDE

www.naicapital.com

**Todd Rizzardi**

Senior Associate | 310.310.1227

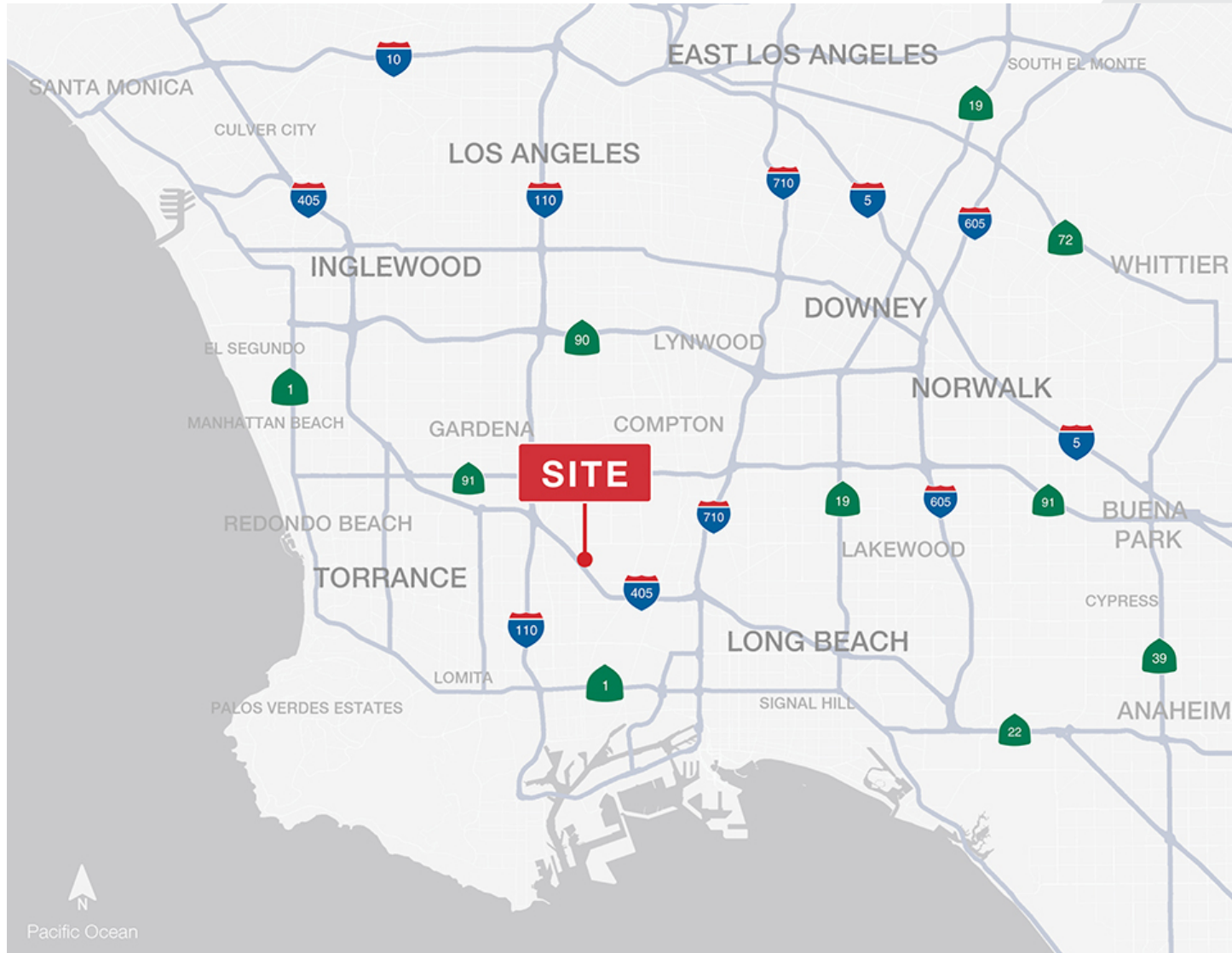
trizzardi@naicapital.com | CalDRE #01506894

NO WARRANTY, EXPRESS OR IMPLIED, IS MADE AS TO THE ACCURACY OF THE INFORMATION CONTAINED HEREIN. THIS INFORMATION IS SUBMITTED SUBJECT TO ERRORS, OMISSIONS, CHANGE OF PRICE, RENTAL OR OTHER CONDITIONS, WITHDRAWAL WITHOUT NOTICE, AND IS SUBJECT TO ANY SPECIAL LISTING CONDITIONS IMPOSED BY OUR PRINCIPALS, COOPERATING BROKERS, BUYERS, TENANTS AND OTHER PARTIES WHO RECEIVE THIS DOCUMENT SHOULD NOT RELY ON IT, BUT SHOULD USE IT AS A STARTING POINT OF ANALYSIS, AND SHOULD INDEPENDENTLY CONFIRM THE ACCURACY OF THE INFORMATION CONTAINED HEREIN THROUGH A DUE DILIGENCE REVIEW OF THE BOOKS, RECORDS, FILES AND DOCUMENTS THAT CONSTITUTE RELIABLE SOURCES OF THE INFORMATION DESCRIBED HEREIN. LOGOS ARE FOR IDENTIFICATION PURPOSES ONLY AND MAY BE TRADEMARKS OF THEIR RESPECTIVE COMPANIES. NAI CAPITAL, INC. CA BRE LIC. #01990696.

# RETAIL/OFFICE



**FOR LEASE - 2,316 SF**



COMMERCIAL REAL ESTATE SERVICES, WORLDWIDE

[www.naicapital.com](http://www.naicapital.com)

**Todd Rizzardi**

Senior Associate | 310.310.1227

[trizzardi@naicapital.com](mailto:trizzardi@naicapital.com) | CalDRE #01506894

NO WARRANTY, EXPRESS OR IMPLIED, IS MADE AS TO THE ACCURACY OF THE INFORMATION CONTAINED HEREIN. THIS INFORMATION IS SUBMITTED SUBJECT TO ERRORS, OMISSIONS, CHANGE OF PRICE, RENTAL OR OTHER CONDITIONS, WITHDRAWAL WITHOUT NOTICE, AND IS SUBJECT TO ANY SPECIAL LISTING CONDITIONS IMPOSED BY OUR PRINCIPALS. COOPERATING BROKERS, BUYERS, TENANTS AND OTHER PARTIES WHO RECEIVE THIS DOCUMENT SHOULD NOT RELY ON IT, BUT SHOULD USE IT AS A STARTING POINT OF ANALYSIS, AND SHOULD INDEPENDENTLY CONFIRM THE ACCURACY OF THE INFORMATION CONTAINED HEREIN THROUGH A DUE DILIGENCE REVIEW OF THE BOOKS, RECORDS, FILES AND DOCUMENTS THAT CONSTITUTE RELIABLE SOURCES OF THE INFORMATION DESCRIBED HEREIN. LOGOS ARE FOR IDENTIFICATION PURPOSES ONLY AND MAY BE TRADEMARKS OF THEIR RESPECTIVE COMPANIES. NAI CAPITAL, INC. CA BRE LIC. #01990696.

# RETAIL/OFFICE

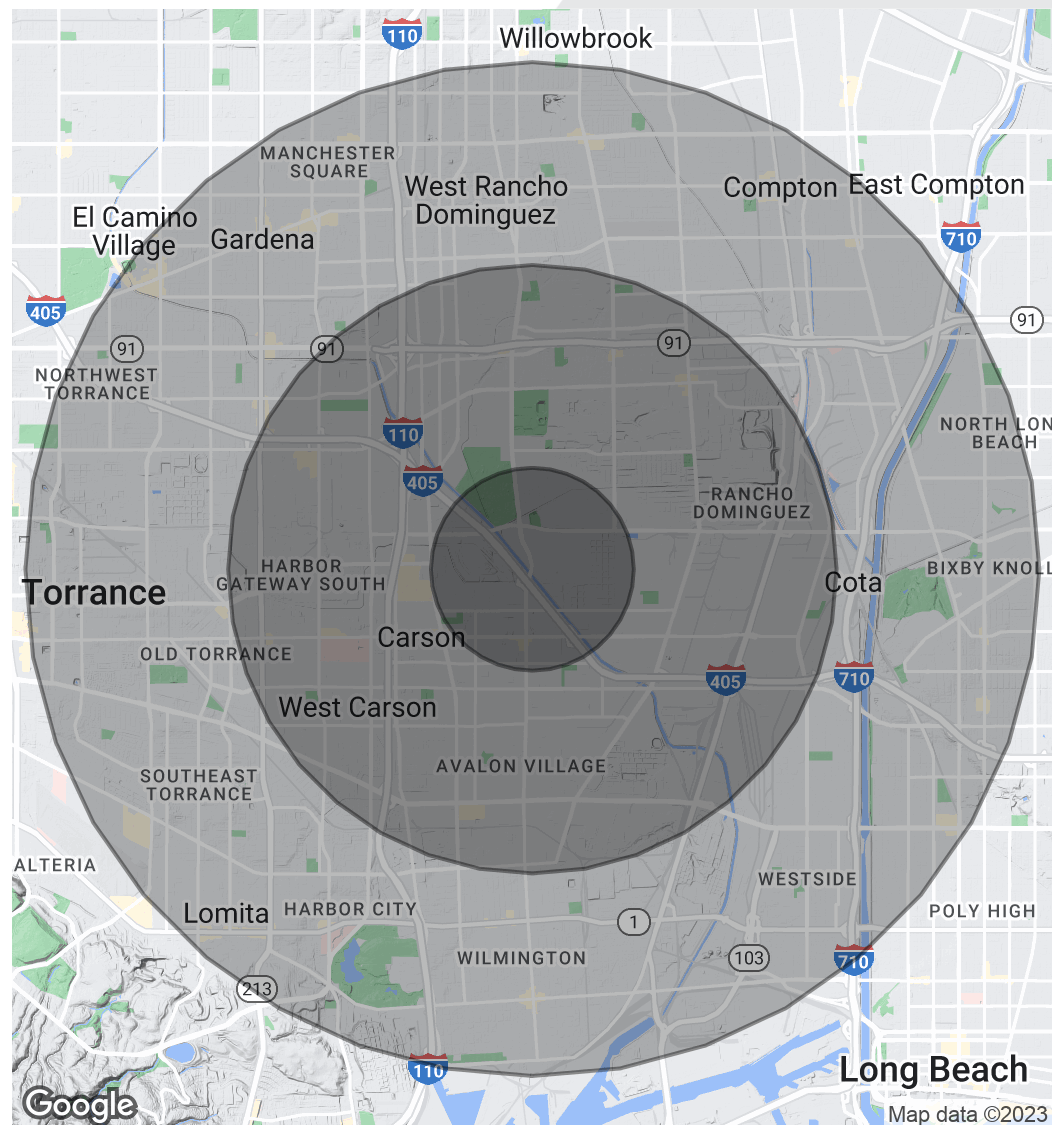


**FOR LEASE - 2,316 SF**

POPULATION	1 MILE	3 MILES	5 MILES
Total Population	18,938	150,008	555,600
Average Age	41.5	39.7	37.3
Average Age (Male)	39.1	37.9	35.8
Average Age (Female)	43.6	41.6	38.6

HOUSEHOLDS & INCOME	1 MILE	3 MILES	5 MILES
Total Households	5,041	45,885	182,428
# of Persons per HH	3.2	3.3	3.1
Average HH Income	\$105,398	\$93,697	\$84,683
Average House Value	\$496,400	\$493,350	\$495,928

\* Demographic data derived from 2020 ACS - US Census



COMMERCIAL REAL ESTATE SERVICES, WORLDWIDE  
www.naicapital.com

**Todd Rizzardi**  
Senior Associate | 310.310.1227  
trizzardi@naicapital.com | CalDRE #01506894

NO WARRANTY, EXPRESS OR IMPLIED, IS MADE AS TO THE ACCURACY OF THE INFORMATION CONTAINED HEREIN. THIS INFORMATION IS SUBMITTED SUBJECT TO ERRORS, OMISSIONS, CHANGE OF PRICE, RENTAL OR OTHER CONDITIONS, WITHDRAWAL WITHOUT NOTICE, AND IS SUBJECT TO ANY SPECIAL LISTING CONDITIONS IMPOSED BY OUR PRINCIPALS. COOPERATING BROKERS, BUYERS, TENANTS AND OTHER PARTIES WHO RECEIVE THIS DOCUMENT SHOULD NOT RELY ON IT, BUT SHOULD USE IT AS A STARTING POINT OF ANALYSIS, AND SHOULD INDEPENDENTLY CONFIRM THE ACCURACY OF THE INFORMATION CONTAINED HEREIN THROUGH A DUE DILIGENCE REVIEW OF THE BOOKS, RECORDS, FILES AND DOCUMENTS THAT CONSTITUTE RELIABLE SOURCES OF THE INFORMATION DESCRIBED HEREIN. LOGOS ARE FOR IDENTIFICATION PURPOSES ONLY AND MAY BE TRADEMARKS OF THEIR RESPECTIVE COMPANIES. NAI CAPITAL, INC. CA BRE LIC. #01990696.