

# WESTGROVE INDUSTRIAL PARK

INDUSTRIAL/FLEX • FOR LEASE • 4,080 – 10,370 SF



16500-16530 WESTGROVE DRIVE  
ADDISON, TEXAS 75001



## JASON FINCH

972.948.8262

[jason@richyoungcompany.com](mailto:jason@richyoungcompany.com)

## ALEX BRYAN

972.965.2878

[abryan@richyoungcompany.com](mailto:abryan@richyoungcompany.com)

OWNED BY:



**CenterSquare**



# WESTGROVE INDUSTRIAL PARK

INDUSTRIAL/FLEX • FOR LEASE • 4,080 – 10,370 SF

## Available Suites:

#16514 - 10,370 SF

- (2) Dock-High & (1) Ramped Door
- Partially Air-Conditioned Warehouse

#16520 - 4,080 SF

- (1) Dock-High & (1) Ramped Door

## Property Details:

- +/- 17" Clear-Height
- Dock-High and Ramped Loading
- Front-Park Rear-Load
- Adjacent to Addison Airport
- 3-Phase Power Available
- Capital Improvements In Progress

### JASON FINCH

972.948.8262

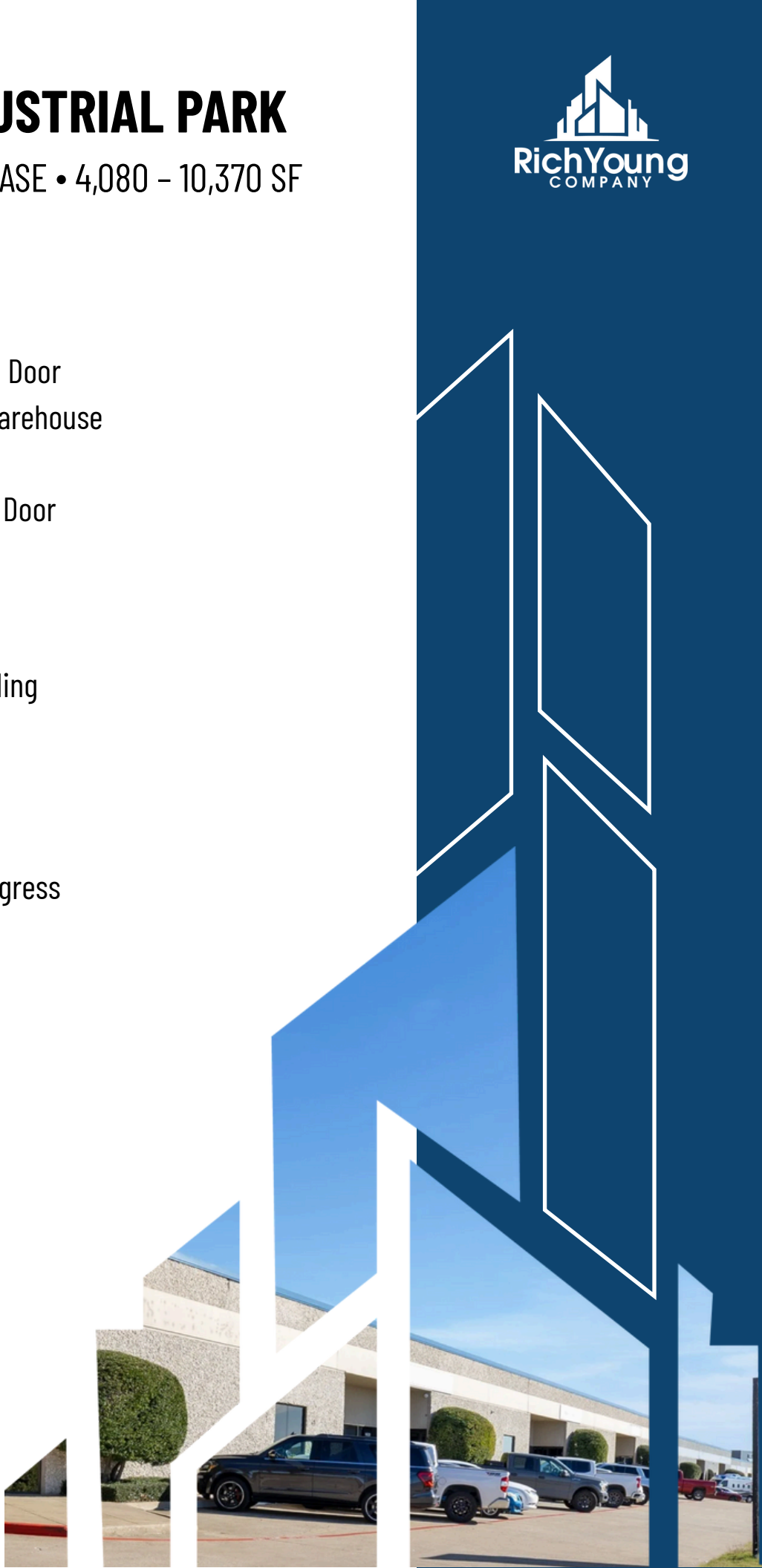
[jason@richyoungcompany.com](mailto:jason@richyoungcompany.com)

### ALEX BRYAN

972.965.2878

[abryan@richyoungcompany.com](mailto:abryan@richyoungcompany.com)

OWNED BY:



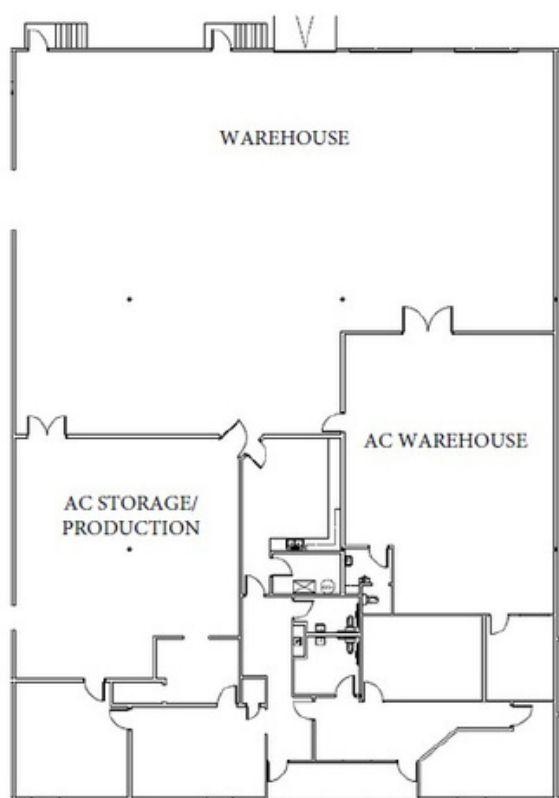
# WESTGROVE INDUSTRIAL PARK

INDUSTRIAL/FLEX • FOR LEASE • 4,080 – 10,370 SF

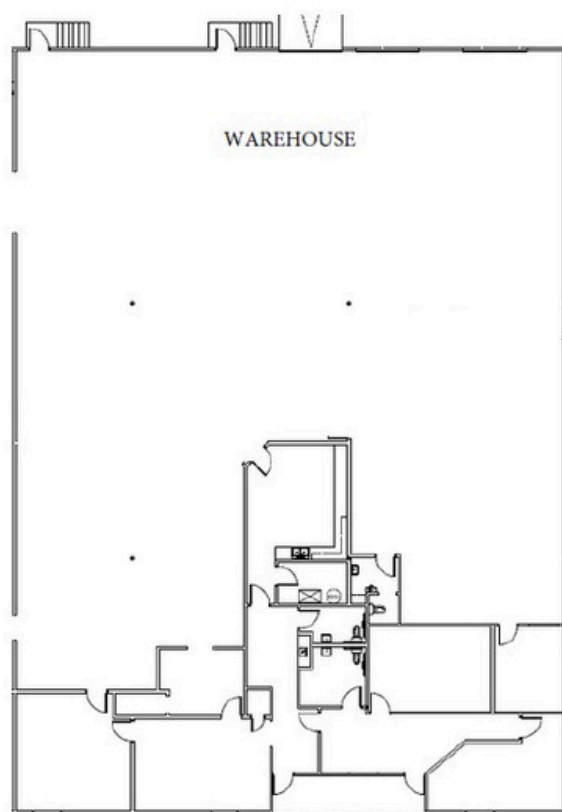
## Available Space:

#16514 – 10,370 SF

EXISTING FLOOR PLAN



PROPOSED FLOOR PLAN



### JASON FINCH

972.948.8262

jason@richyoungcompany.com

### ALEX BRYAN

972.965.2878

abryan@richyoungcompany.com

OWNED BY:



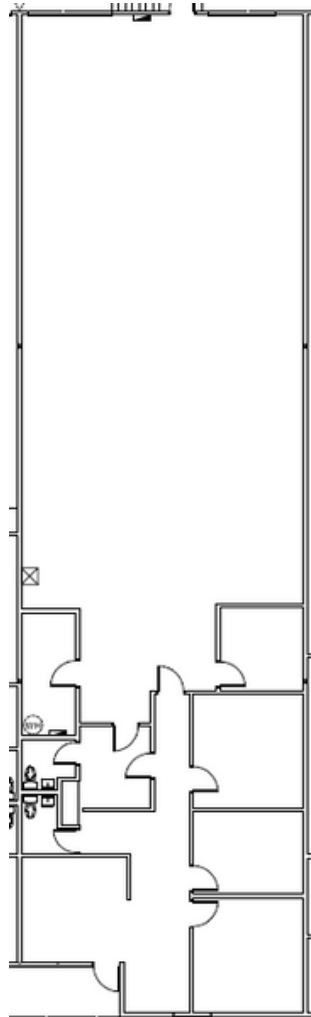
# WESTGROVE INDUSTRIAL PARK

INDUSTRIAL/FLEX • FOR LEASE • 4,080 – 10,370 SF



## Available Space:

#16520 - 4,080 SF



### JASON FINCH

972.948.8262

[jason@richyoungcompany.com](mailto:jason@richyoungcompany.com)

### ALEX BRYAN

972.965.2878

[abryan@richyoungcompany.com](mailto:abryan@richyoungcompany.com)

OWNED BY:





# WESTGROVE INDUSTRIAL PARK

INDUSTRIAL/FLEX • FOR LEASE • 4,080 – 10,370 SF



**JASON FINCH**

972.948.8262

[jason@richyoungcompany.com](mailto:jason@richyoungcompany.com)

**ALEX BRYAN**

972.965.2878

[abryan@richyoungcompany.com](mailto:abryan@richyoungcompany.com)

OWNED BY:

