

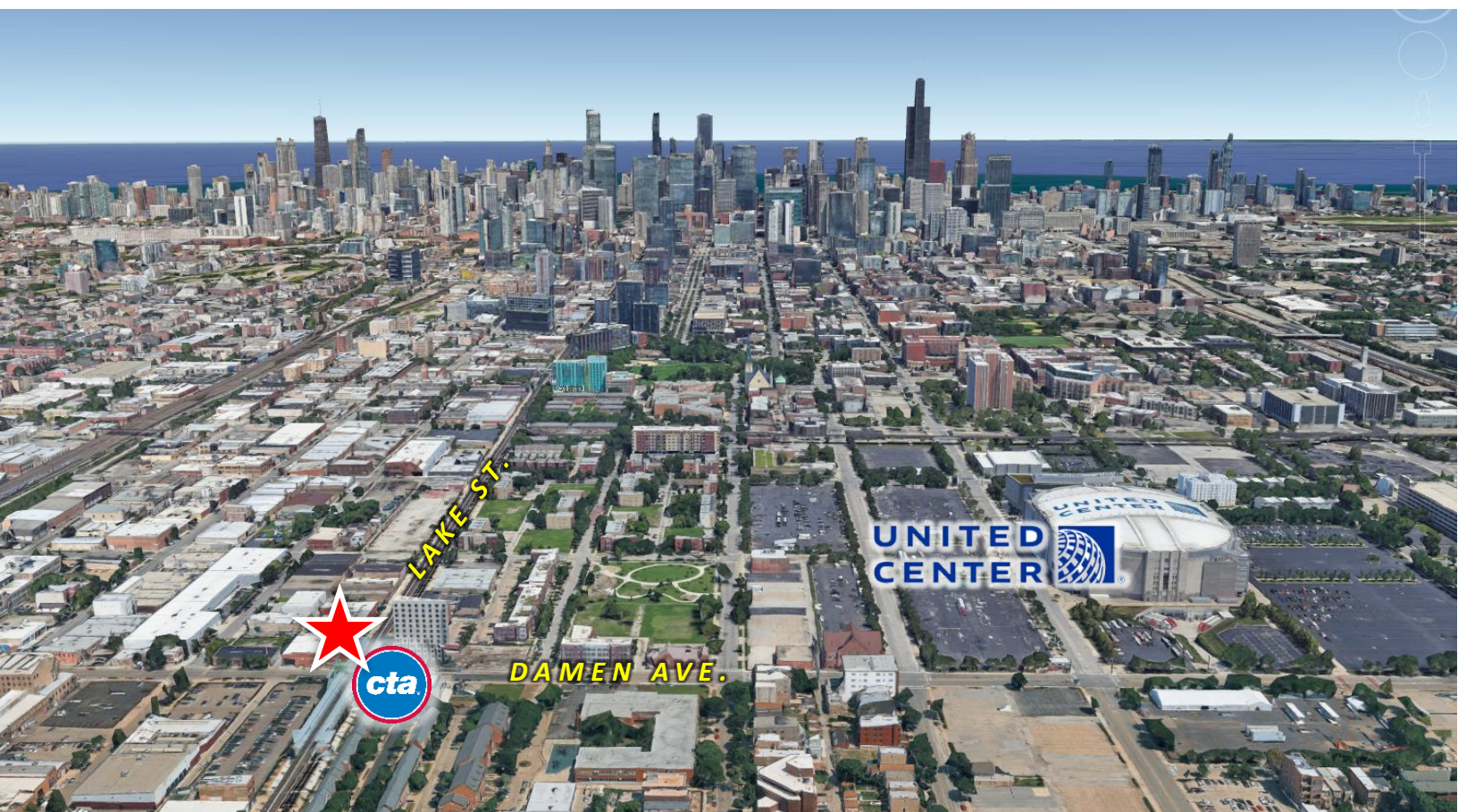
1958 W Lake Street
(NEC Lake St. and Damen)
Chicago, Illinois

FOR LEASE

10,465 SF CORNER FLEX / INDUSTRIAL SPACE



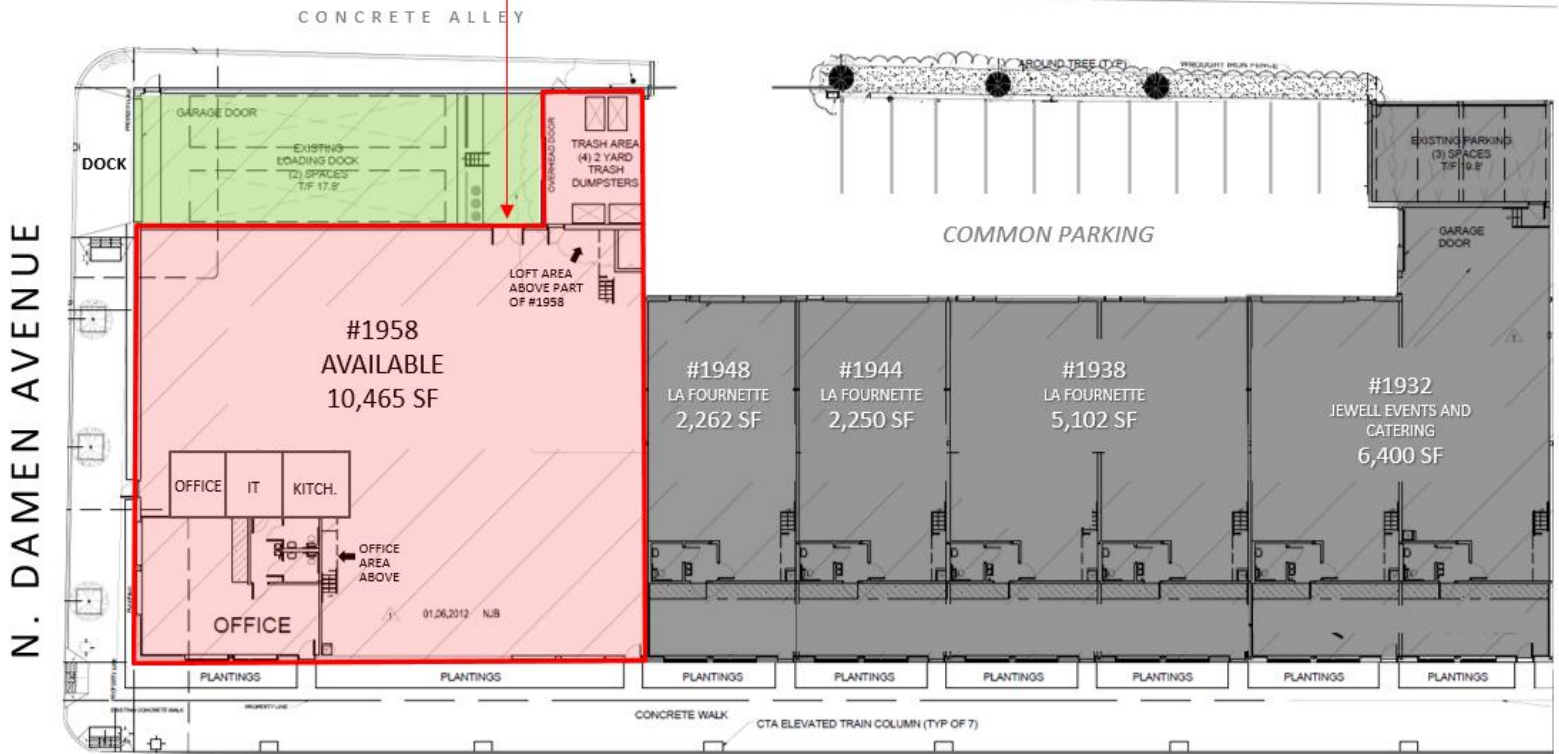
- 10,465 SF flex warehouse space ideally located at signaled NEC of Lake and Damen in Chicago's Near West side / West Loop.
- Clear span flex space with 22' ceiling height, two ADA restrooms and kitchenette, production room, 1,000 sf mezzanine office space.
- Recessed dock with direct roll-door access directly into Premises.
- Fully sprinklered.
- Ample on-site gated parking and common interior recessed dock.
- New CTA Green line transit station completed in 2024.
- New 96-unit mixed-use multi-family across the street
- Three blocks north of the United Center and planned mixed-use development .
- Zoning is PMD 4





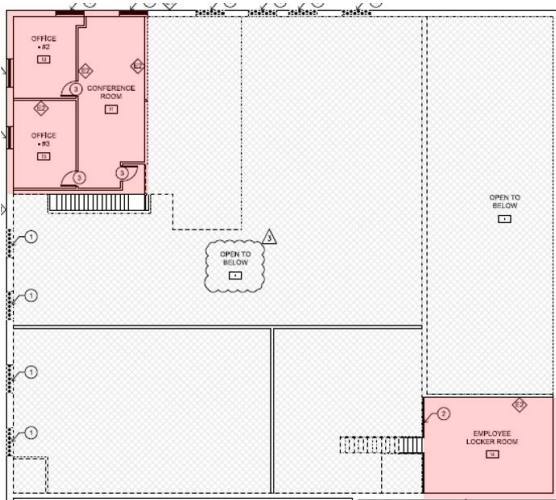
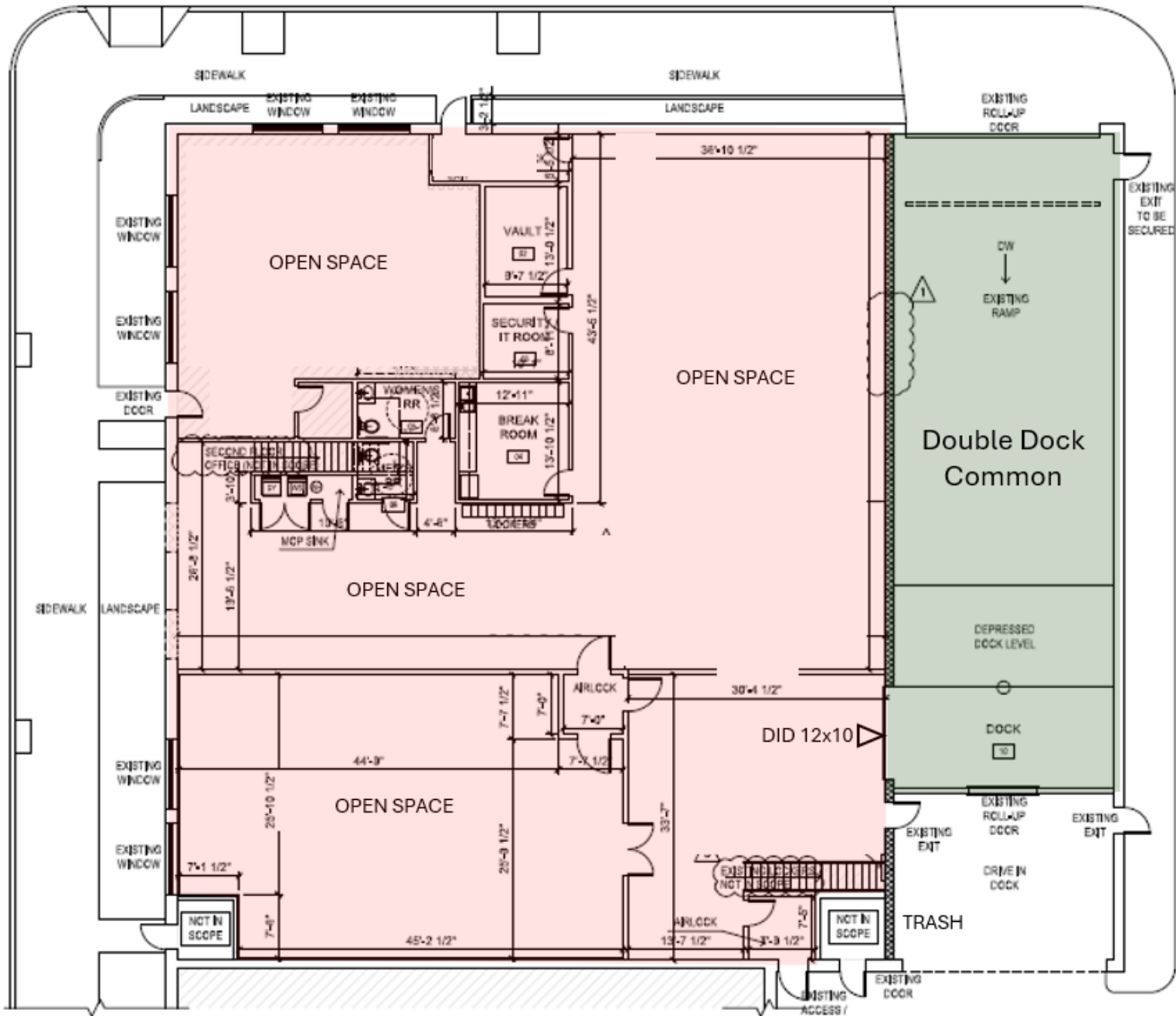


12' Roll door with direct access to dock platform

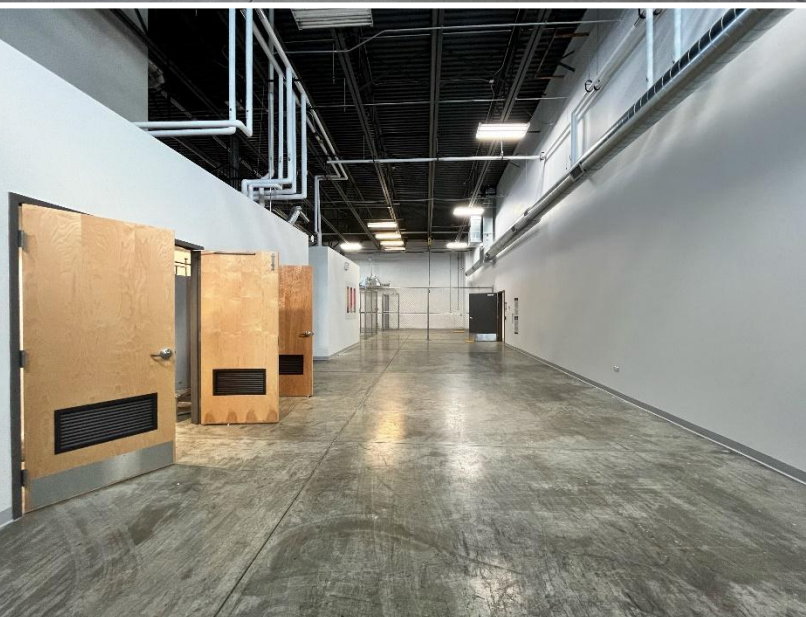
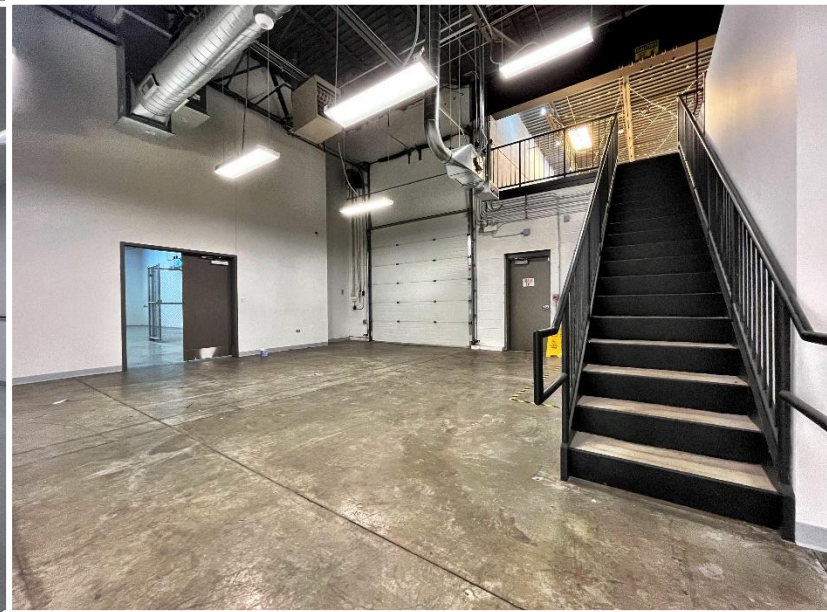
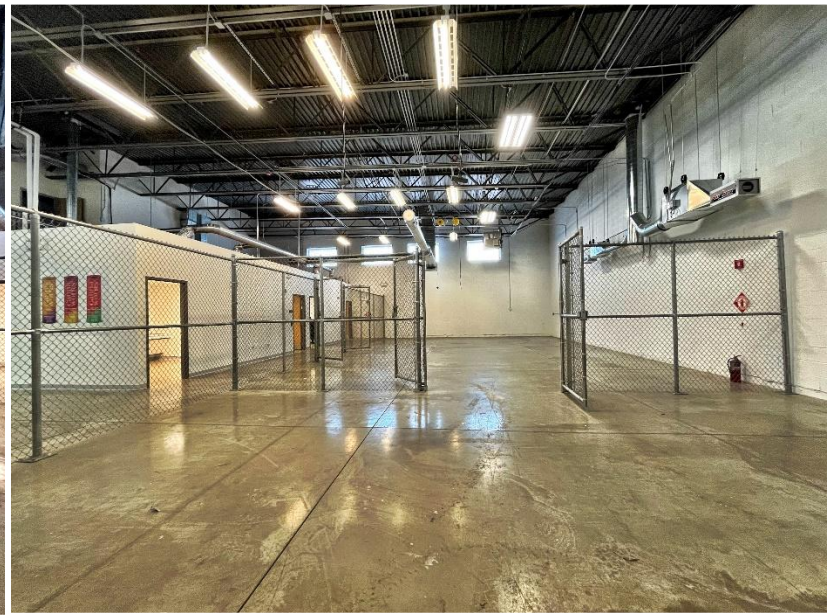
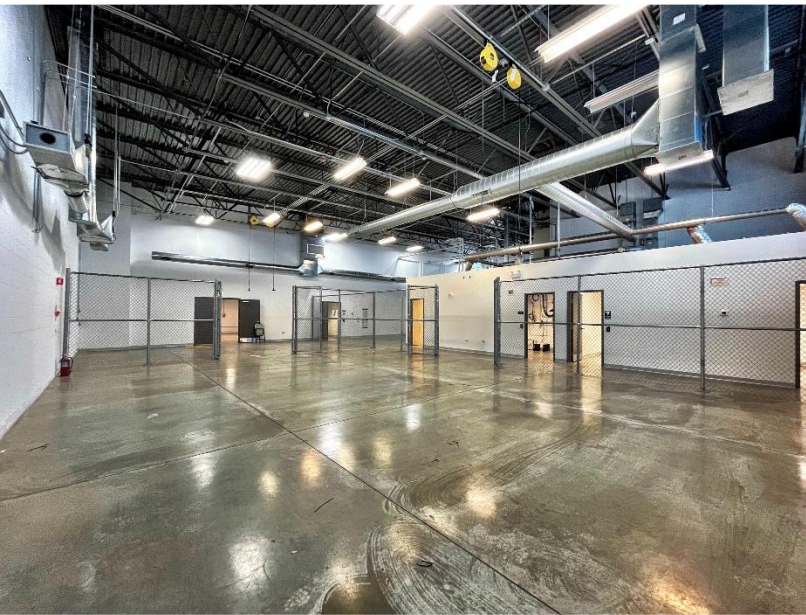


W. LAKE STREET
(CTA ELEVATED)

As Built Plan: Ground Floor



As Built Plan: Mezzanine plan
This visual has been reduced in
Size for reference.





NEW 96-UNIT
MIXED USE
MULTI-FAMILY

NEW CTA
GREEN LINE
STATION

CTA Green Line Station at Lake and Damen

