



Office/Retail Suite for Lease

505 Millburn Avenue

SHORT HILLS, NJ

Available Space: +/- 3,100 - 6,200 SF

Lease Price: Please call for pricing

Location: In close proximity to Routes 78 and 24

Details:

- Class A retail or office available in a very attractive building
- Spectacular location in a very high end community
- Excellent transportation, NY direct trains minutes from property
- Great retail / office location with excellent shopping and top restaurants nearby

Exclusive Broker

Weichert Commercial
Brokerage, Inc.

Scott Maynard

Senior Vice President
973-477-7116 cell

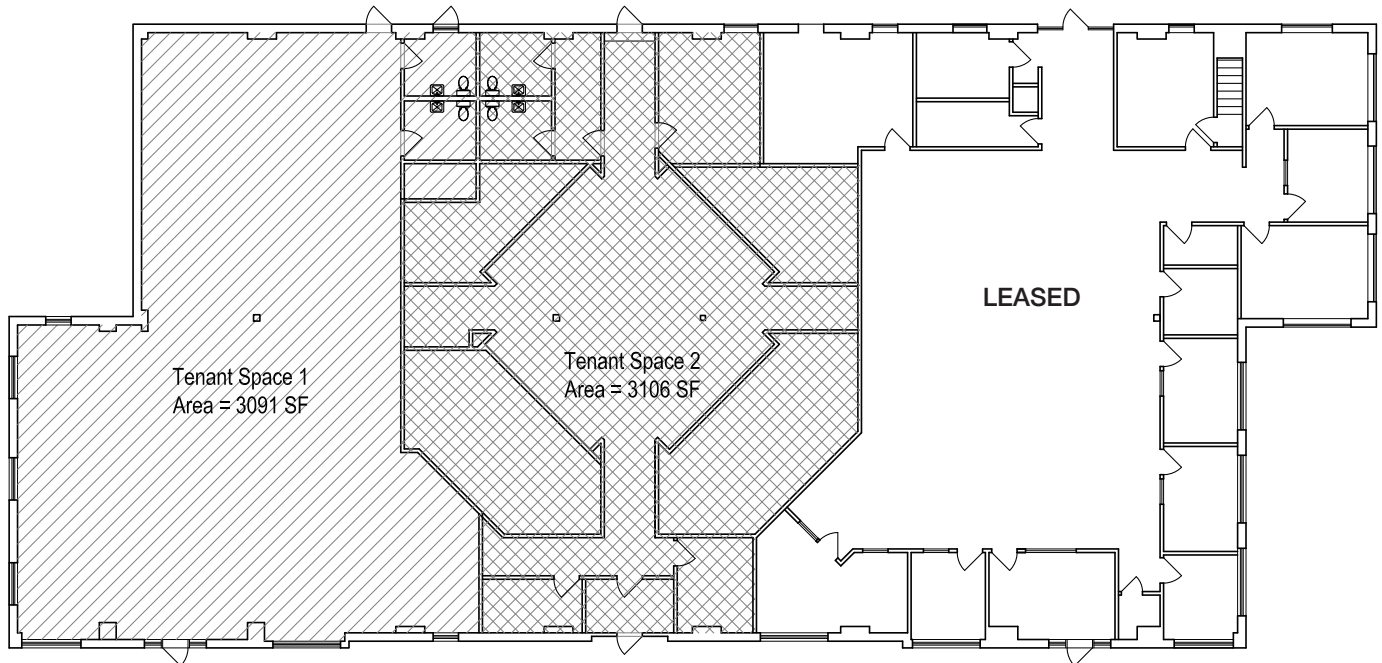
smaynard@weichertcommercial.com

1625 Route 10 • Morris Plains, NJ • 973-267-7778 • weichertcommercial.com

No warranty or representation, express or implied is made as to the accuracy of the information contained herein, and same is submitted subject to errors, omissions, change of price, rental or other conditions, withdrawal without notice and to any special listing conditions imposed by our principals.

505 Millburn Avenue

Floor Plan



Weichert Commercial Brokerage, Inc.

1625 Route 10 • Morris Plains, NJ • 973-267-7778 • weichertcommercial.com

No warranty or representation, express or implied is made as to the accuracy of the information contained herein, and same is submitted subject to errors, omissions, change of price, rental or other conditions, withdrawal without notice and to any special listing conditions imposed by our principals.

505 Millburn Avenue

Demographics

