



TWENTY 20
LOFT/APARTMENT

20
CHILD STREET

TWENTY 20

20 CHILD STREET
CAMBRIDGE, MA

 **DISTRICT**
REAL ESTATE ADVISORS

+/- 1,420 SF - 4,207 SF OPPORTUNITES

LOCATION



MUSEUM OF SCIENCE

NORTH POINT PARK

FLAGSHIP PIONEERING

CAMBRIDGE SIDE MALL

Apple
SEPHORA
TJ-MAXX
Bath & Body Works
CVS pharmacy
The Cheesecake Factory
Foot Locker
AT&T
S&S

BLAZE PIZZA

HUBSPOT

BANK OF AMERICA



KREI

BON ME
Tatte
BAKERY & CAFE

THE COMMON AT CAMBRIDGE CROSSING

SANOFI

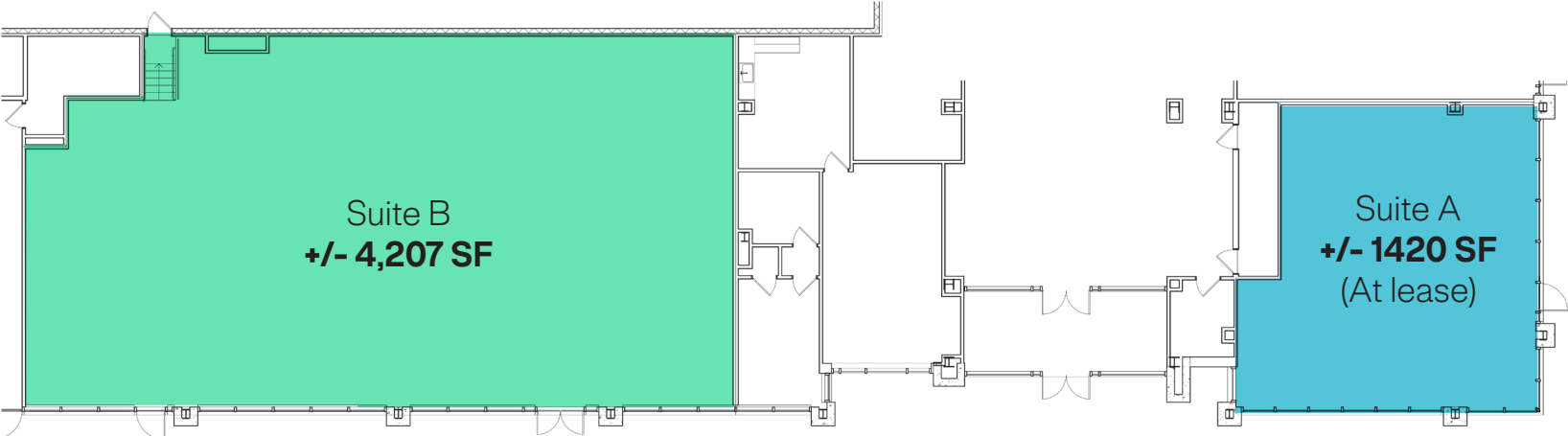


THE LEXINGTON
cafe Beatrice
gepetto
LAMPLIGHTER BREWING CO.

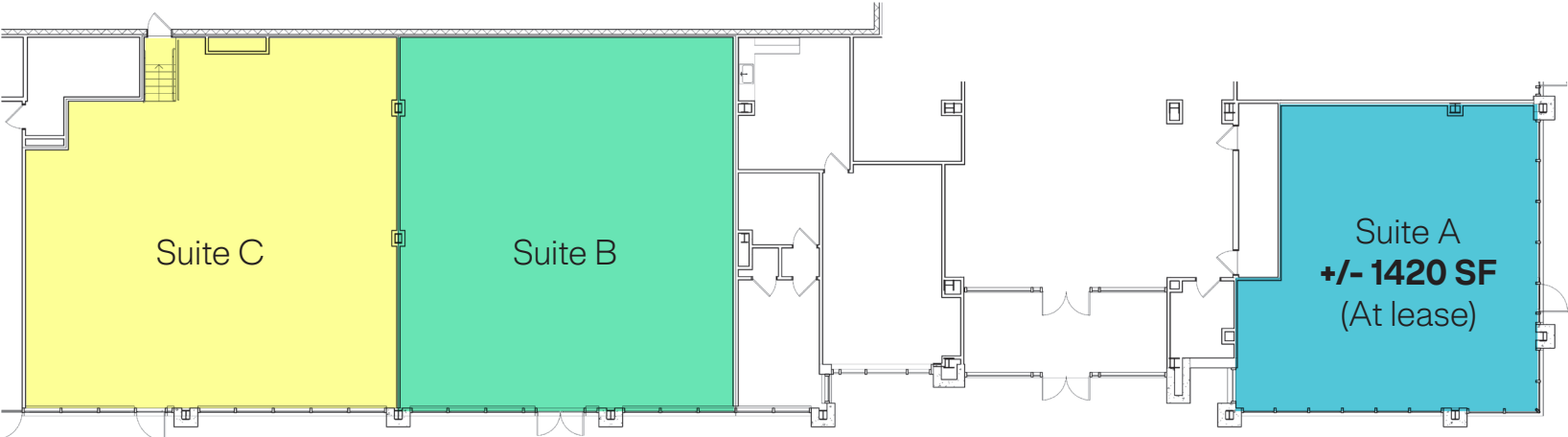
CEREVEL THERAPEUTICS
EXACT SCIENCES
CAPSULE TECHNOLOGIES
PHILIPS RESEARCH
BRISTOL MYERS SQUIBB

LAYOUT

Option 1



Option 2



GAMBRIDGE CROSSING SPECS

2.4 MILLION SQ. FT.
RESIDENTIAL SPACE

2.1 MILLION SQ. FT.
COMMERCIAL SPACE

43 ACRES
BRINGING TOGETHER BOSTON, SOMMERSVILLE,
CAMBRIDGE, AND CHARLESTOWN

11 ACRES
ACTIVATED GREEN SPACE

2
MBTA LINES

0.5 MILES
TO KENDALL SQUARE

LOCAL TENANTS

 Bristol Myers
Squibb™

 capsule

 cerevel

 EXACT
SCIENCES

 PHILIPS

 sanofi



NEIGHBORHOOD

Over the past few decades, the Cambridge Crossing neighborhood has undergone significant redevelopment, emerging as a thriving hub for innovation. Major biotech companies like Philips, Sanofi, and Bristol Myers Squibb have chosen Cambridge Crossing as their home. The neighborhood is bolstered by a strong residential community as the 11 acres of activated green space offer a nice contrast to typical urban living. Cambridge Crossing is also conveniently located next to two MBTA stops making it easy to travel to and from other parts of Cambridge, Somerville, and Boston.





FIND YOUR DISTRICT



CHRISTOPHER MEARN

Principal

617.595.1544
chris@districtadvisors.com



GERALD LOEHR

Broker

914.438.4802
gerald@districtadvisors.com



800 Boylston Street
Suite 420, Boston MA 02199

857.284.7971
districtadvisors.com

This information has been secured from sources we believe to be reliable, but we make no representations or warranties, expressed or implied, as to the accuracy of the information. References to rents, expenses, expense reimbursements, lease terms, square footage, demographics, traffic count or age are approximate. Parties must verify the information and bears all risk for any inaccuracies.