

PROPERTY HIGHLIGHTS:

- APN'S: 0292-062-18, 19 & 21
- 3 Lots of Freeway Frontage Vacant Land
- Abundant Retail Amenities
- Zoning is General Commercial as part of the East Valley Corridor Specific Plan
- Convenient Access to the 10, 210 and 215 Freeways

DEMOGRAPHICS 3 MILES

2022 Population:	78,068
Avg. Household Income:	\$88,473
Daytime Population:	40,185
Traffic Count: ±158,276 CPD on 1-10 Fwy	

Source: Regis Online

**CONTACT BROKER'S
FOR MORE INFORMATION**

RICH ERICKSON
951.276.3637
rich.erickson@lee-associates.com
DRE #01219183

DAVID MUDGE, SIOR, CCIM
951.276.3611
dmudge@lee-associates.com
DRE #01070762

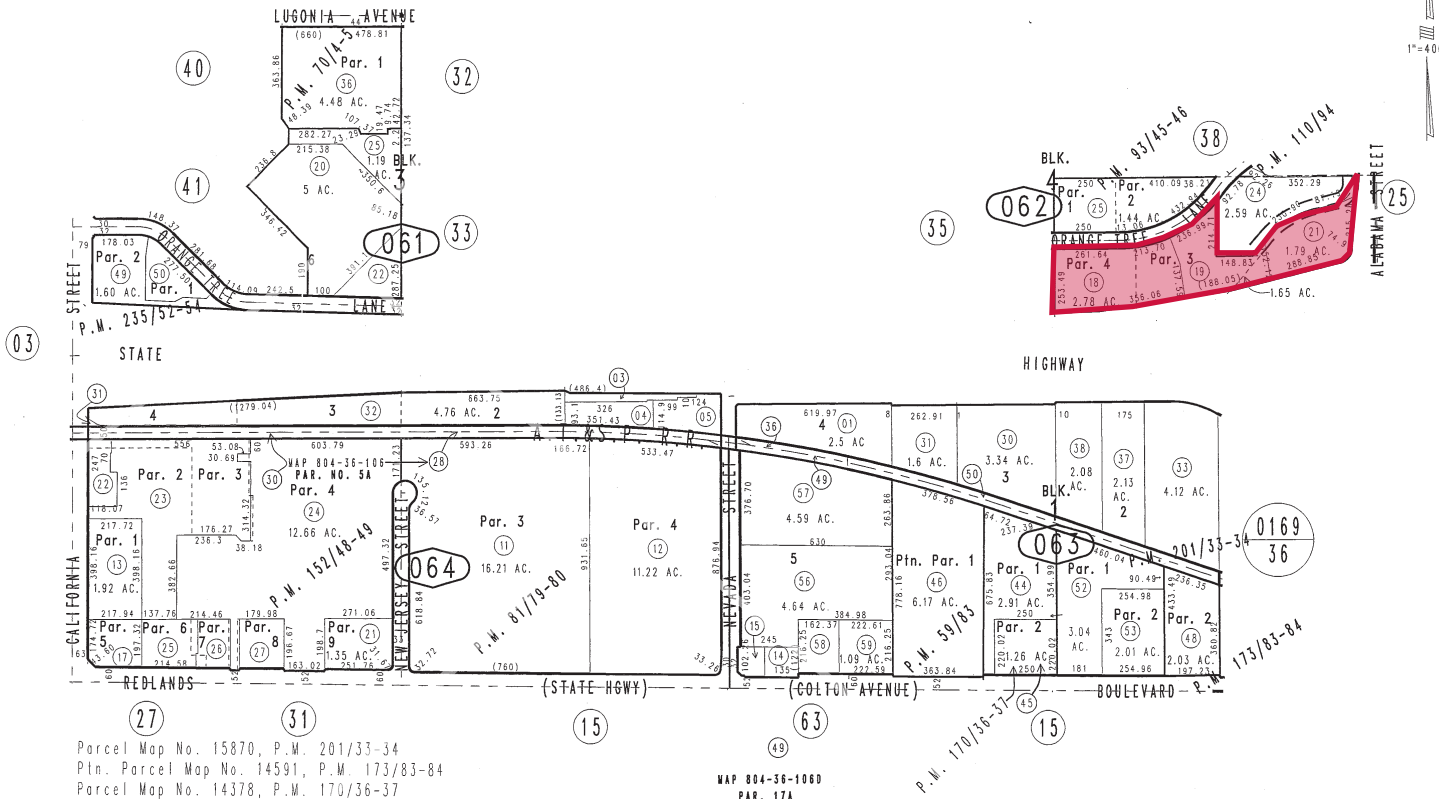
No warranty or representation has been made to the accuracy of the foregoing information. Terms of sale or lease and availability are subject to change or withdrawal without notice. Lee & Associates Commercial Real Estate Services, Inc. - Riverside. 4193 Flat Rock Drive, Suite 100 - Riverside CA 92505 DRE# 01048055

THIS MAP IS FOR THE PURPOSE OF AD VALOREM TAXATION ONLY.

Ptn. Henry L. Williams Tract
M.B. 11/17

City of Redlands
Tax Rate Area
5007

0292 - 06



- Parcel Map No. 15870, P.M. 201/33-34
- Ptn. Parcel Map No. 14591, P.M. 173/83-84
- Parcel Map No. 14378, P.M. 170/36-37
- Parcel Map No. 13542, P.M. 152/48-49
- Parcel Map No. 10070, P.M. 110/94
- Parcel Map No. 8132, P.M. 93/45-46
- Ptn. Parcel Map No. 6611, P.M. 81/79-80
- Ptn. Parcel Map No. 7286, P.M. 70/4-5
- Ptn. Parcel Map No. 5681, P.M. 59/83
- Parcel Map No. 19078, P.M. 235/52-54

Ptn. S.1/2, Sec. 20
T.1S., R.3W.

Assessor's Map
Book 0292 Page 06
San Bernardino County

REVISED
01/17/19 RU
01/18/19 RU
07/16/16 RA
05/04/20 KC

February 2004

RICH ERICKSON
951.276.3637
rich.erickson@lee-associates.com
DRE #01219183

DAVID MUDGE, SIOR, CCIM
951.276.3611
dmudge@lee-associates.com
DRE #01070762

No warranty or representation has been made to the accuracy of the foregoing information. Terms of sale or lease and availability are subject to change or withdrawal without notice. Lee & Associates Commercial Real Estate Services, Inc. - Riverside. 4193 Flat Rock Drive, Suite 100 - Riverside CA 92505 DRE# 01048055

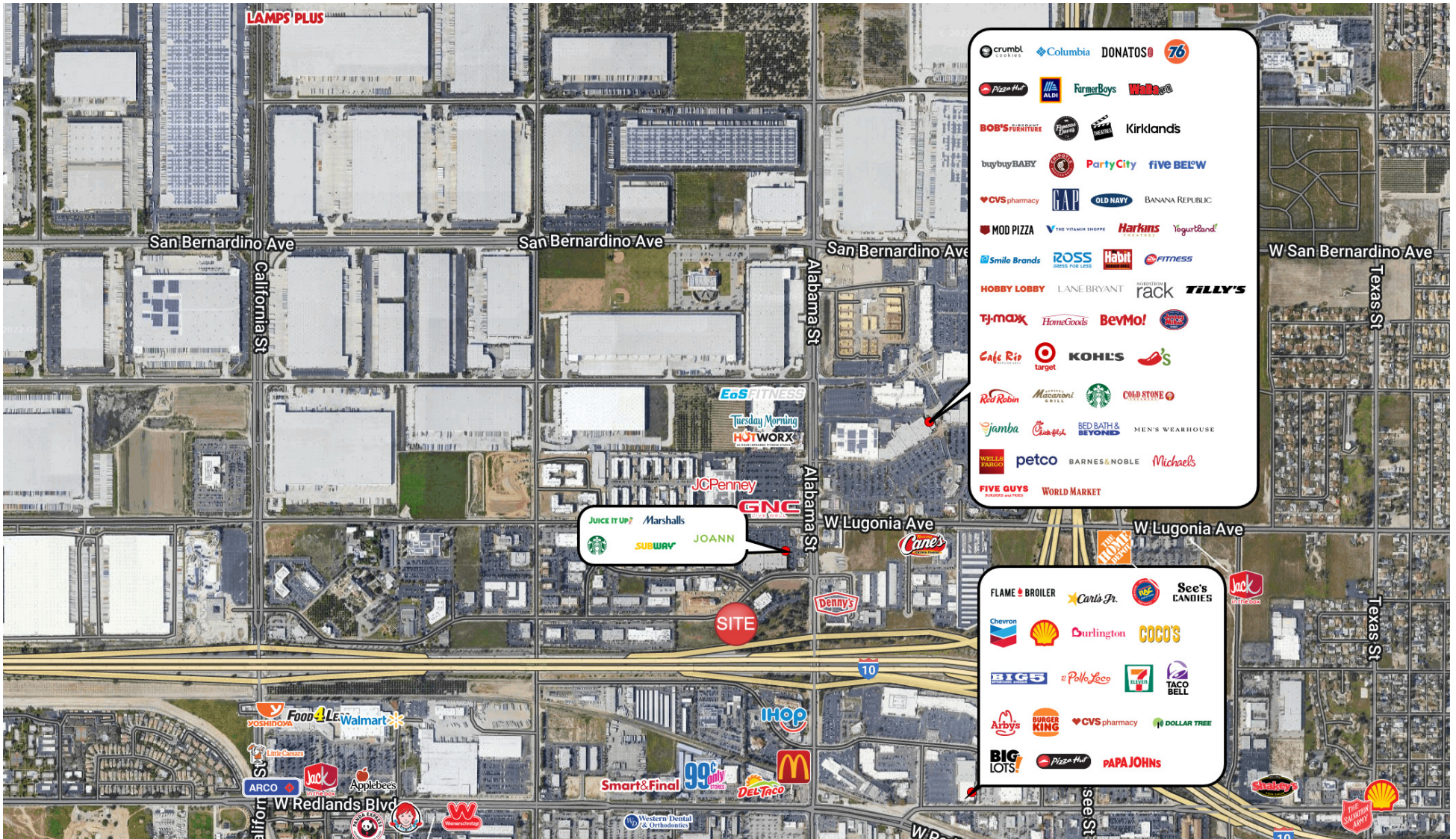
SWQ ORANGE TREE LN & ALABAMA ST, REDLANDS, CA 92374



RICH ERICKSON
951.276.3637
rich.erickson@lee-associates.com
DRE #01219183

DAVID MUDGE, SIOR, CCIM
951.276.3611
dmudge@lee-associates.com
DRE #01070762

No warranty or representation has been made to the accuracy of the foregoing information. Terms of sale or lease and availability are subject to change or withdrawal without notice. Lee & Associates Commercial Real Estate Services, Inc. - Riverside. 4193 Flat Rock Drive, Suite 100 - Riverside CA 92505 DRE# 01048055

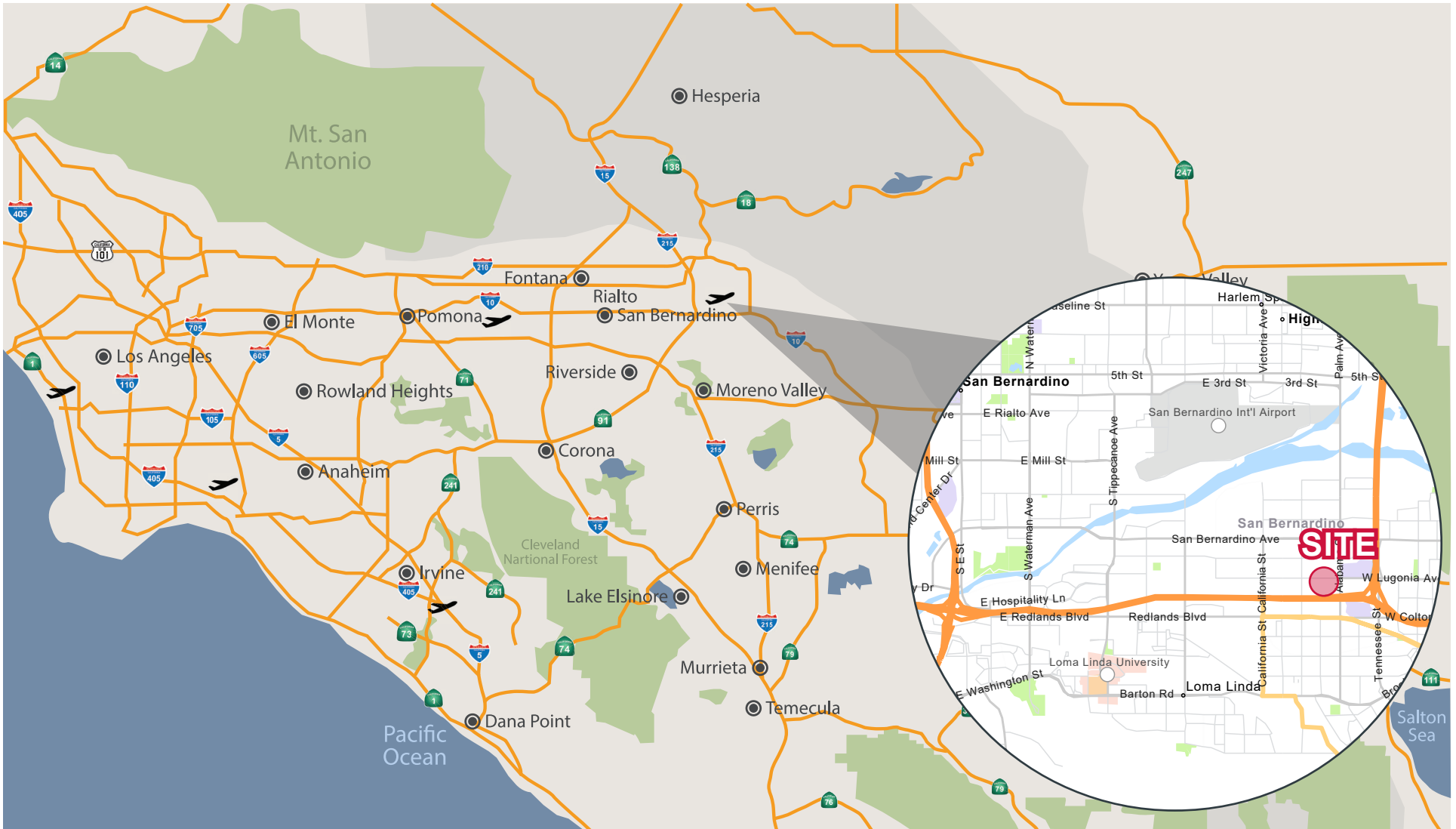


RICH ERICKSON
951.276.3637
rich.erickson@lee-associates.com
DRE #01219183

DAVID MUDGE, SIOR, CCIM
951.276.3611
dmudge@lee-associates.com
DRE #01070762

No warranty or representation has been made to the accuracy of the foregoing information. Terms of sale or lease and availability are subject to change or withdrawal without notice. Lee & Associates Commercial Real Estate Services, Inc. - Riverside. 4193 Flat Rock Drive, Suite 100 - Riverside CA 92505 DRE# 01048055

SWQ ORANGE TREE LN & ALABAMA ST, REDLANDS, CA 92374



RICH ERICKSON
951.276.3637
rich.erickson@lee-associates.com
DRE #01219183

DAVID MUDGE, SIOR, CCIM
951.276.3611
dmudge@lee-associates.com
DRE #01070762

No warranty or representation has been made to the accuracy of the foregoing information. Terms of sale or lease and availability are subject to change or withdrawal without notice. Lee & Associates Commercial Real Estate Services, Inc. - Riverside. 4193 Flat Rock Drive, Suite 100 - Riverside CA 92505 DRE# 01048055