

FOR SALE

2 Parcels of Commercial Land | ±1.83 acres



1100 Blk S. Blosser Rd.
 Santa Maria, CA

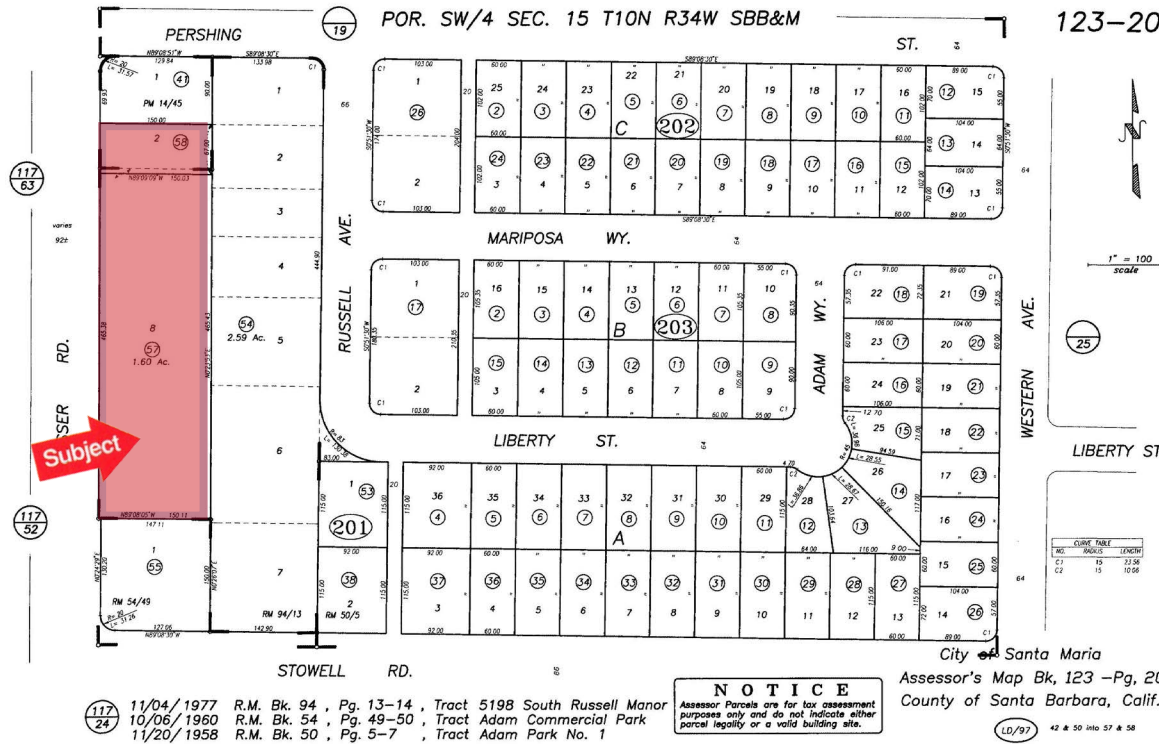


Mike Kelly 805.928.2800 ext. 113 Mike@PacificaCRE.com Lic #01800988	Brian LaCabe 805.928.2800 ext. 103 BLacabe@PacificaCRE.com Lic #01026699	Jerry Schmidt 805.928.2800 ext. 107 Mike@PacificaCRE.com Lic #00956042
--	---	---

2520 Professional Parkway | Santa Maria, CA 93455 | PacificaCommercialRealty.com

Information contained herein has been obtained from the owner of the property or from other sources deemed reliable. We have no reason to doubt its accuracy, but we do not guarantee it.

FOR SALE 1100 Blk S. Blosser Rd. | Santa Maria, CA



Sale Details

- Asking Price: \$1,550,000.00 (19.44/psf)
- Terms: Cash, CTNL

Property Details

- Land Size: 1.83 Acres (79,714 SF)
- Zoning: PD-C2 (Retail Commercial)
- Number of Parcels: Two (2)
- APN Numbers: 123-201-057 & 058

Rare infill commercial parcels of vacant land for sale along South Blosser Road between Stowell Road and Pershing Street. Excellent exposure to South Blosser Road with +/-450 feet of frontage along South Blosser. Property lies within the City of Santa Maria's "Opportunity Zone" which may make development eligible for preferential federal tax treatment or preferential consideration for federal grants and programs (check with the City of Santa Maria for details). Property is book ended by 7-11 to the North and a small multi-Tenant retail building to the South. Call listing agent for additional information.



2520 Professional Parkway | Santa Maria, CA 93455 | PacificaCommercialRealty.com

Information contained herein has been obtained from the owner of the property or from other sources deemed reliable. We have no reason to doubt its accuracy, but we do not guarantee it.