

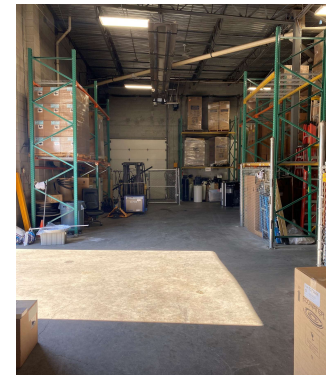
Lease - 18,000 SF w/ 1.4 Acres Fenced Yard
3536 South 1950 West
West Valley City, UT



LEASE RATE
\$0.95
PSF NNN

PROPERTY DETAILS

Total SF:	18,000 SF
Office:	9,200 SF (2-story)
Warehouse/Storage:	8,800 SF
Doors:	(1) 10' x 10' DH w/ leveler (3) 10' x 12' GL
Ceiling:	20' clear
Power:	3 phase



HIGHLIGHTS

- 1.4 acres of fully fenced and paved yard
- Radiant heat in the warehouse
- Swamp cooled warehouse
- Multiple floor drains
- Security lighting on exterior of the building
- Two back-up generators service the space in case of power outage
- Two large gates on both sides of the building providing drive through access

CONTACT

Bob Mills

385.988.6477

bob@adventut.com

Riley Mills

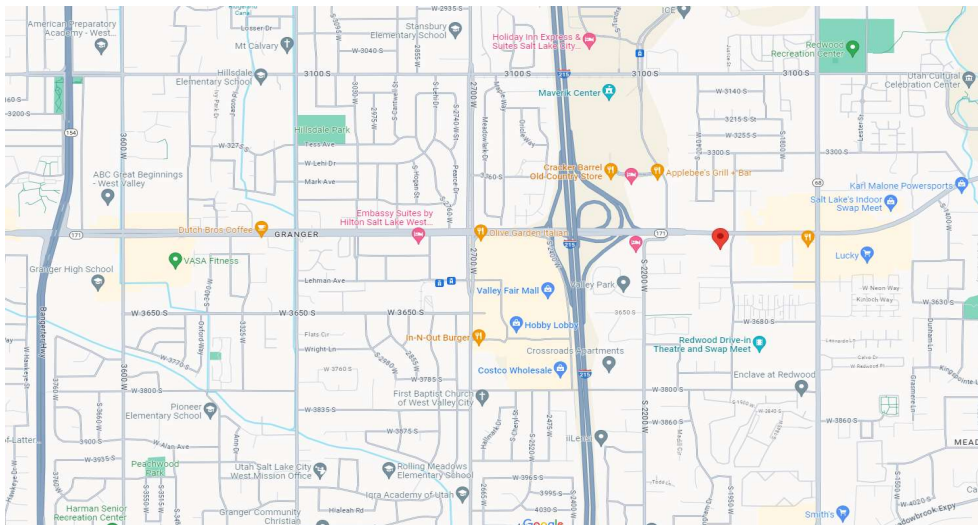
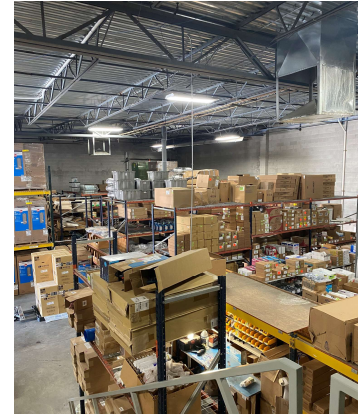
385.988.6478

riley@adventut.com



5284 S. Commerce Dr. #C 274, Murray, Utah 84107 / o:801.433.2480 f: 801.290.3172

Lease - 18,000 SF w/ 1.4 Acres Fenced Yard
3536 South 1950 West
West Valley City, UT



5284 S. Commerce Dr. #C 274, Murray, Utah 84107 / o:801.433.2480 f: 801.290.3172