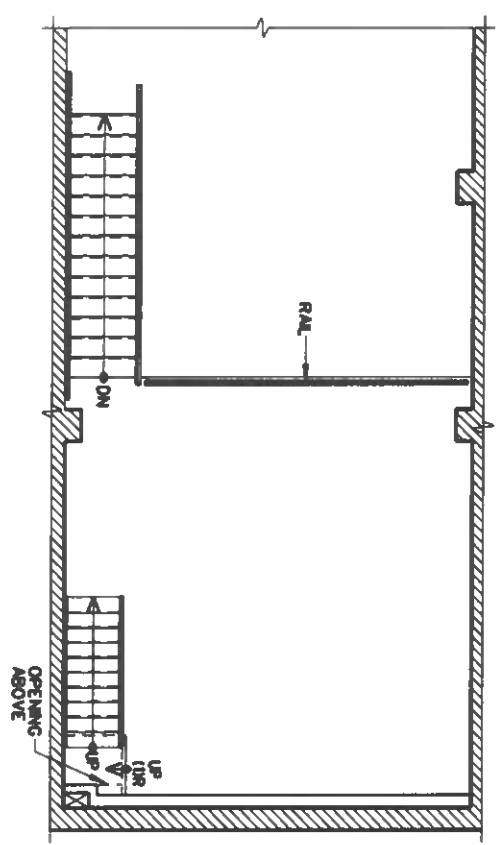


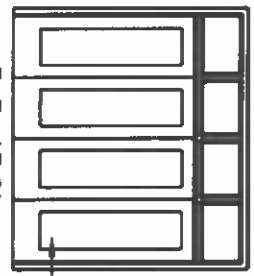
FIRST FLOOR PLAN

1172 SQ. FT.



MEZZANINE PLAN

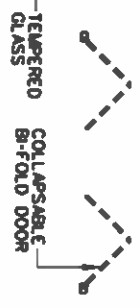
324 SQ. FT.



PLAN

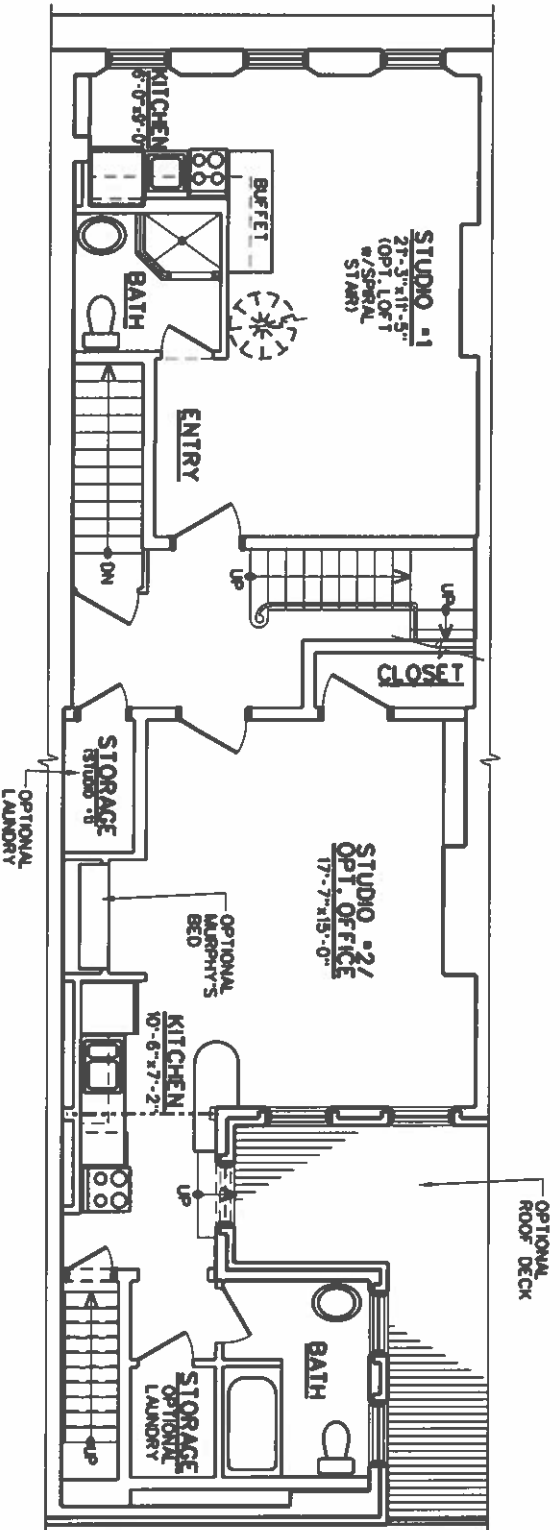
DOOR DETAILS

1/8"-1'-0"



MAIN STREET DESIGN
 ARCHITECTS INC.
 2601 Center Avenue, Pittsburgh, PA 15201-1000

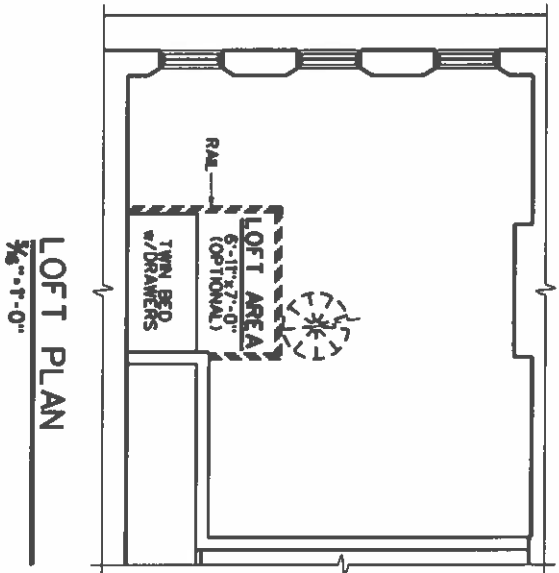
FIRST FLOOR PLAN
 1/6"-1'-0"
 1



SECOND FLOOR PLAN

3/8" = 1'-0"

(STUDIO-1...393 SQ.F.T.)
(STUDIO-2...477 SQ.F.T.)

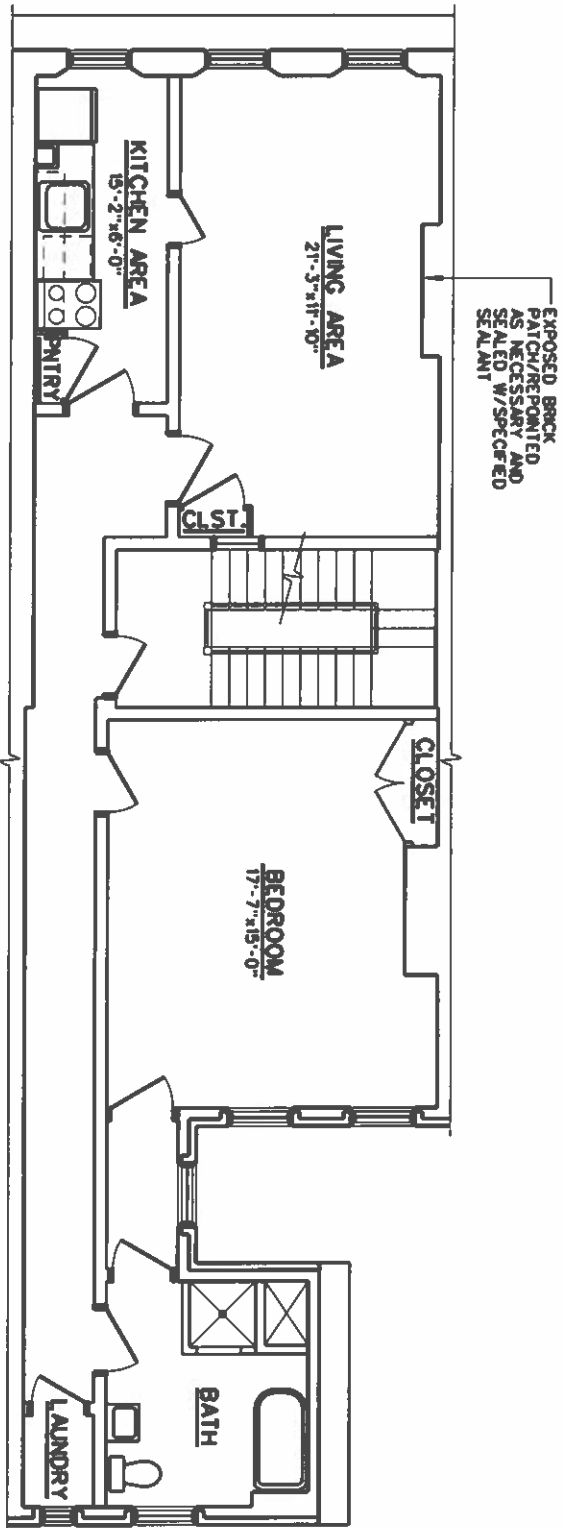


LOFT PLAN

3/8" = 1'-0"

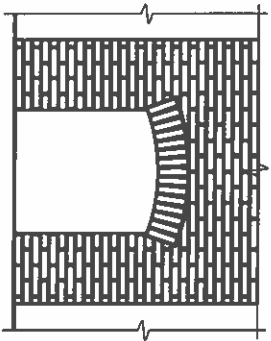
PROPOSED RENOVATIONS @ 1737 EAST CARSON ST.

MAIN STREET DESIGN Services Inc. <small>3000 Grand Avenue, Fremont, CA 94538 (925) 781-8888</small>	
SECOND FLOOR PLAN <small>DATE: 11/20/18</small>	2



THIRD FLOOR PLAN
3/16" = 1'-0"

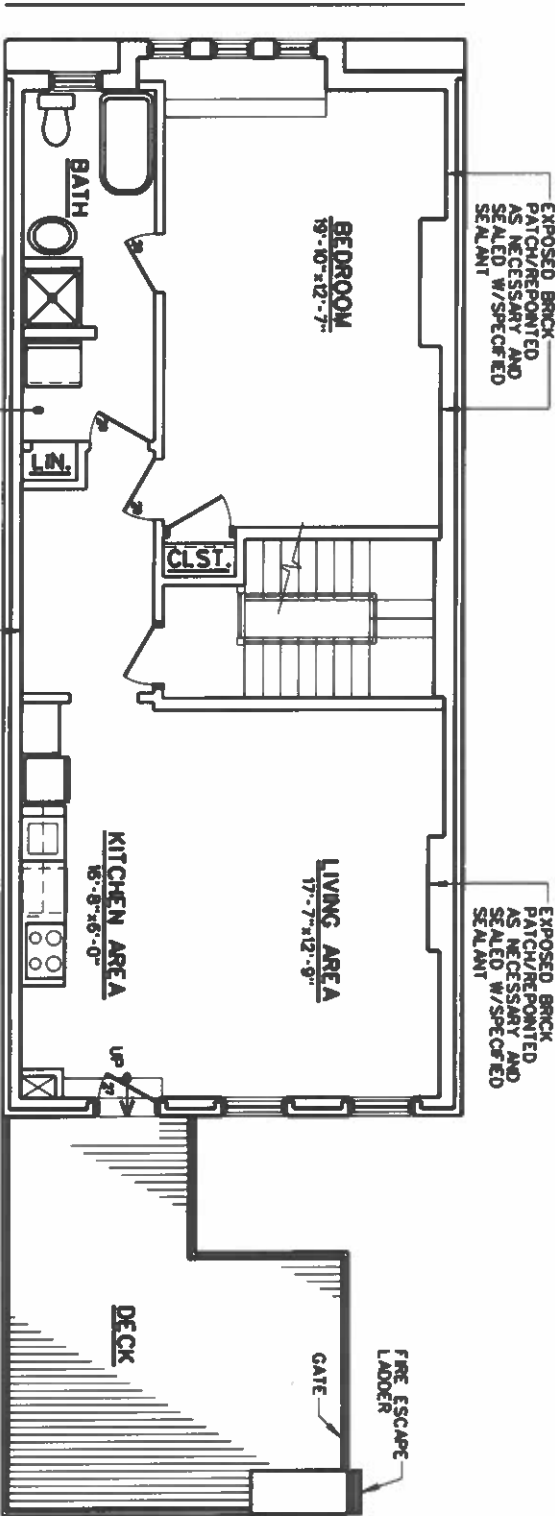
917 SQ. FT.



FIREPLACE DETAIL
3/16" = 1'-0"

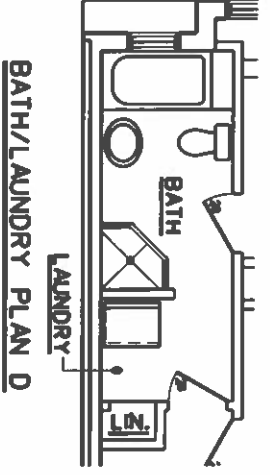
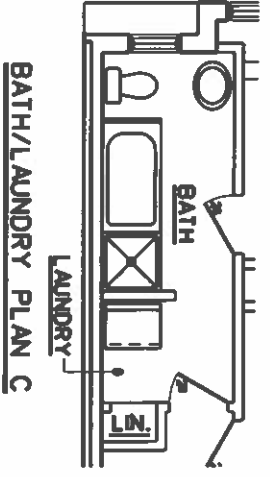
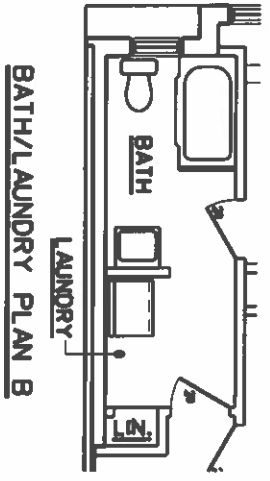
MAIN STREET DESIGN
Services, Inc.
3000 Central Avenue, Richmond, VA 23260
703.261.1111

THIRD FLOOR PLAN
3



FOURTH FLOOR PLAN

794 SQ. FT.



PROPOSED RENOVATIONS @ 1737 EAST CARSON ST.

<p>MAIN STREET DESIGN SERVICES INC. <small>2044 Cherry Avenue, Pittsburgh, PA 15218 412-981-4848</small></p>	
<p>FOURTH FLOOR PLAN</p>	<p>4</p>

