

# FirstBank DTC

5105 DTC Parkway, Greenwood Village, CO 80111

GREAT LOCATION AT FRONT DOOR TO DTC



## PROPERTY HIGHLIGHTS

- Front door to DTC with great visibility and access
- Walkable amenities including Eddie V's Prime Seafood, Shanahan's Steakhouse, Original Pancake House and Starbucks
- 2024 Lobby, elevator and corridor updates
- Easy access to I-25 and I-225
- Surface and covered parking
- Near Bellevue Light Rail Station



**For leasing information please contact:**

Michelle Gertzman | 720.743.6399  
mgertzman@premisescommercial.com

Matt Smith | 303.996.8460  
msmith@premisescommercial.com

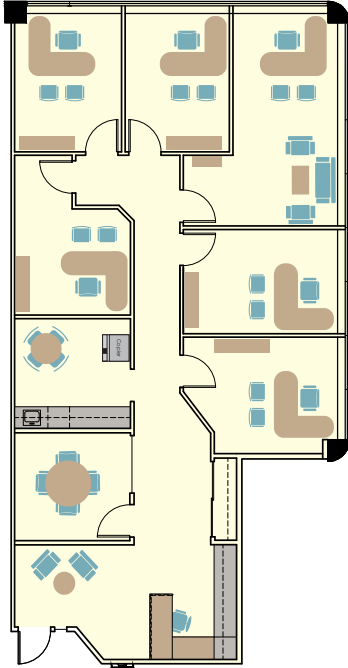
**PREMISES**  
PREMISES COMMERCIAL REAL ESTATE LLC  
WWW.PREMISESCOMMERCIAL.COM

# FirstBank DTC

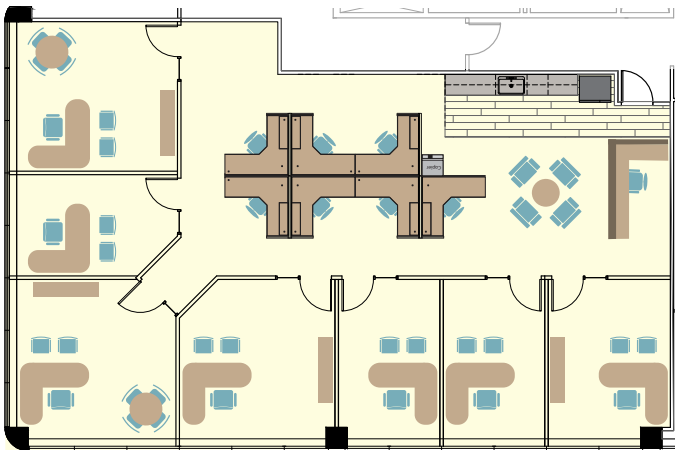
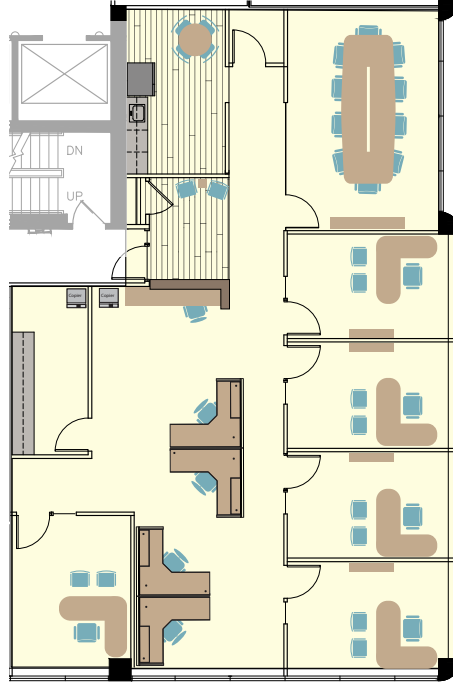
5105 DTC Parkway, Greenwood Village, CO 80111

## AVAILABLE SUITES

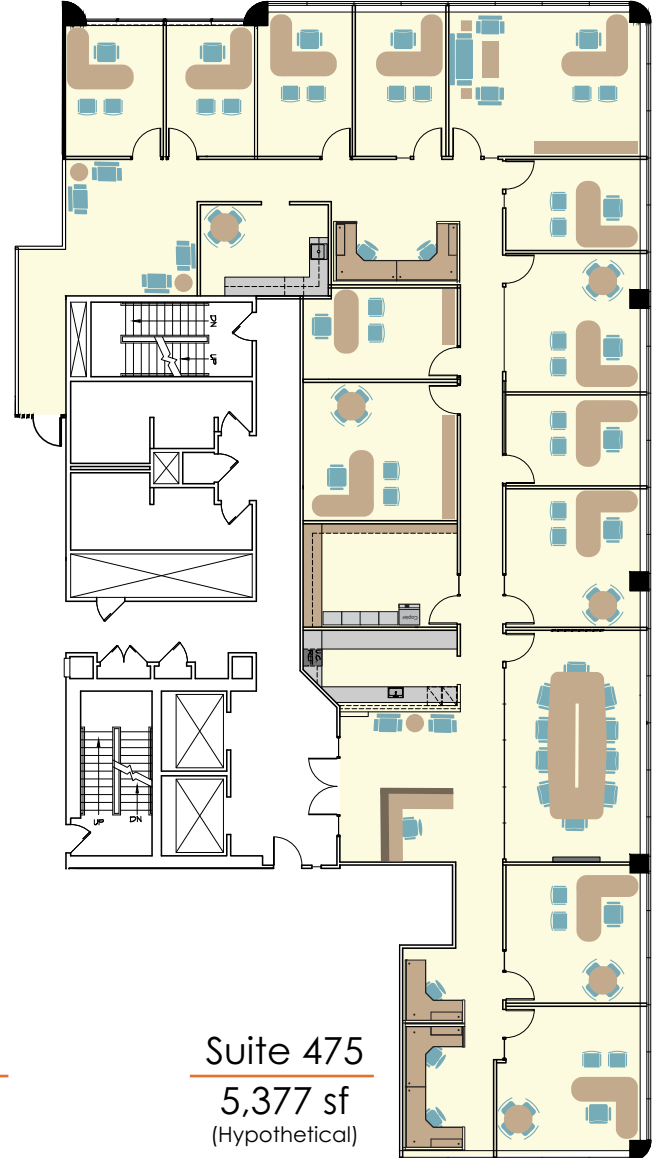
Suite 240  
1,961 sf



Suite 275  
2,575 sf



Suite 450  
2,703 sf  
(Hypothetical)



Suite 475  
5,377 sf  
(Hypothetical)

[WWW.PREMISESCOMMERCIAL.COM](http://WWW.PREMISESCOMMERCIAL.COM)

The information contained herein, while not guaranteed, has been secured from sources we believe to be reliable. Different brokerage relationships are available which include Seller/Landlord Agency, Buyer/Tenant Agency and Transaction Broker. Premises Commercial Real Estate, LLC is acting in this capacity as Landlord's/Sublessor's Agent, unless otherwise agreed, and owes its fiduciary allegiance to Landlord/Sublessor as defined by Colorado Real Estate Commission.