

# OHIA BUILDING 2ND FLOOR

1149 - 1159 Bethel Street, Honolulu, HI 96813

# FOR LEASE

Office Space in Downtown



## PROPERTY DESCRIPTION

Secure your place in Honolulu's energetic downtown scene with this value-driven office opportunity.

Located at Bethel and Pauahi Streets, the Ōhia Building offers proximity to essential government services and commercial centers. Versatile, move-in ready spaces accommodate businesses large and small, including the opportunity to lease a full floor.

©2026 Sofos Realty Corporation. All information contained herein is obtained from sources deemed reliable. However, no representations or guarantees are made as to the accuracy thereof, and it is provided herein subject to errors, omissions, changes and withdrawals without notice. Offeror and/or his agent should confirm this information prior to making any offer. Buyer agrees that all negotiation shall be conducted through Sofos Realty Corporation only. No subagency is offered or intended.

## PROPERTY SNAPSHOT

Location:	Downtown Honolulu
Property Type:	Office
TMK:	(1) 2-1-3-10
Rent:	\$1.50 - \$1.75 / SF / MO
CAM:	\$1.25 / SF / Month <i>Includes electricity &amp; AC</i>
Zoning:	BMX-4



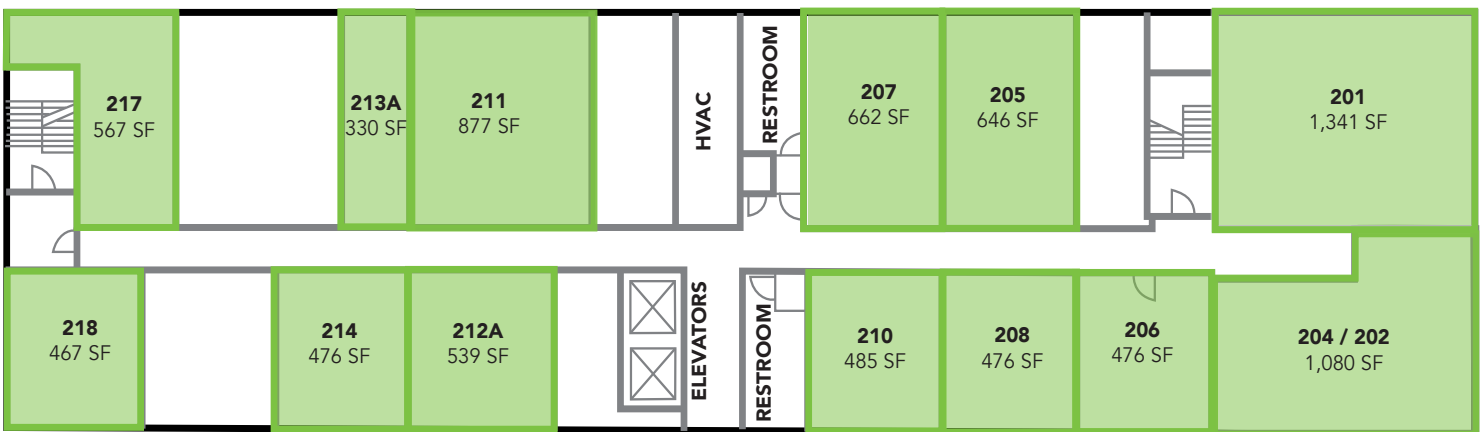
**SOFOS REALTY**  
CORPORATION  
Commercial Brokerage • Property Management

## AVAILABLE SPACE

UNIT	TYPE	SF
201	Office	1,341 SF
202/204	Office	1,080 SF
205	Office	646 SF
206	Office	476 SF
207	Office	662 SF
208	Office	476 SF
210	Office	485 SF
211	Office	877 SF
212A	Office	539 SF
213A	Office	330 SF
214	Office	476 SF
217	Office	567 SF
218	Office	467 SF



## FLOOR PLAN



Site Plans are for marketing purposes only and may not accurately reflect the property.