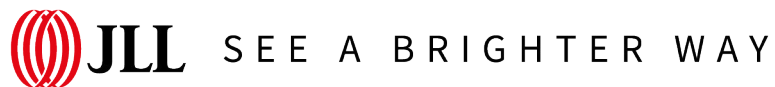




For sublease

6705 Wedgewood Ct N, Maple Grove, MN
11,745 SF Available through 7/5/2030



Building specifications

6750 Wedgewood Ct N

Maple Grove, MN

Available Through

July 5th, 2030

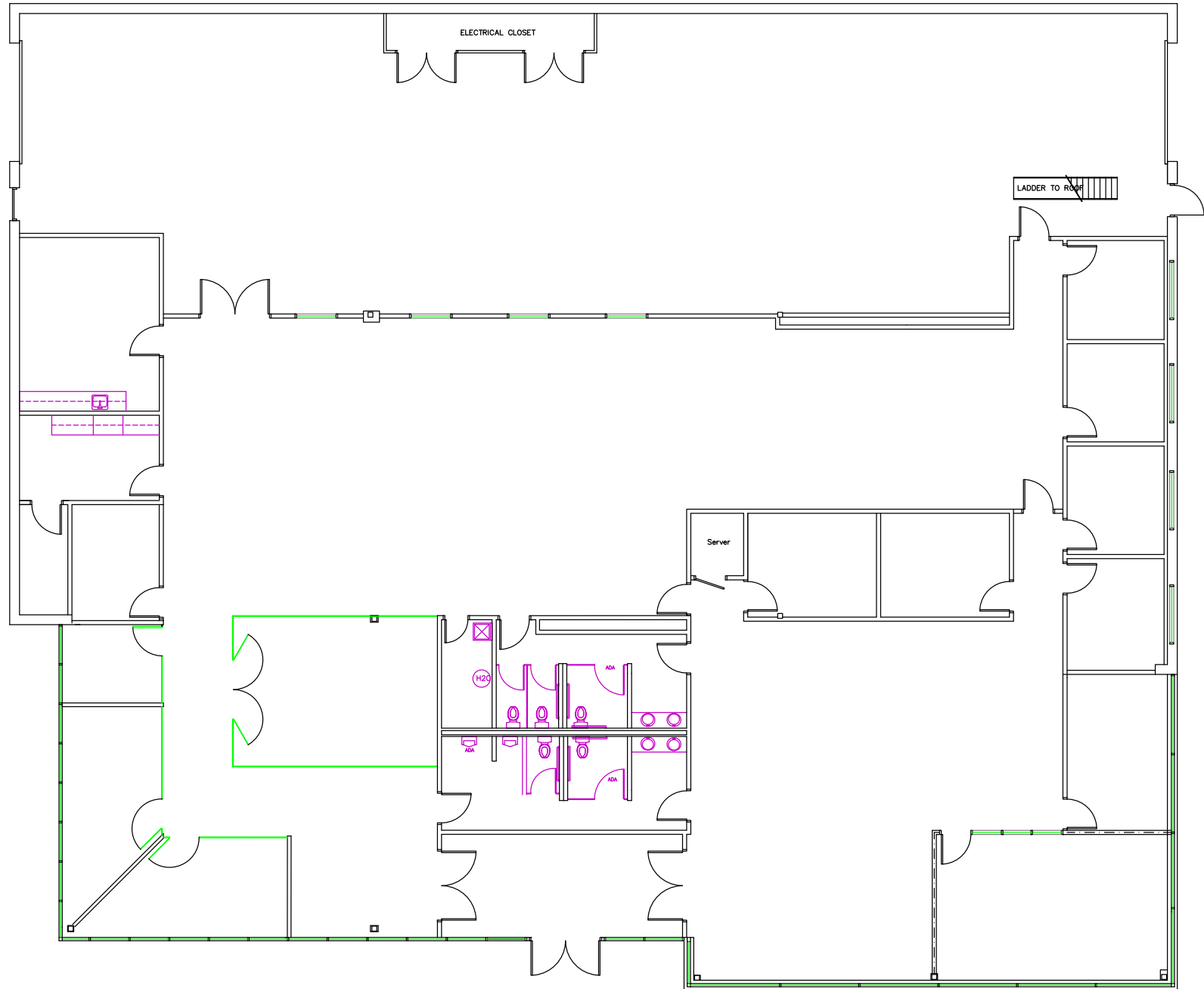
Close to

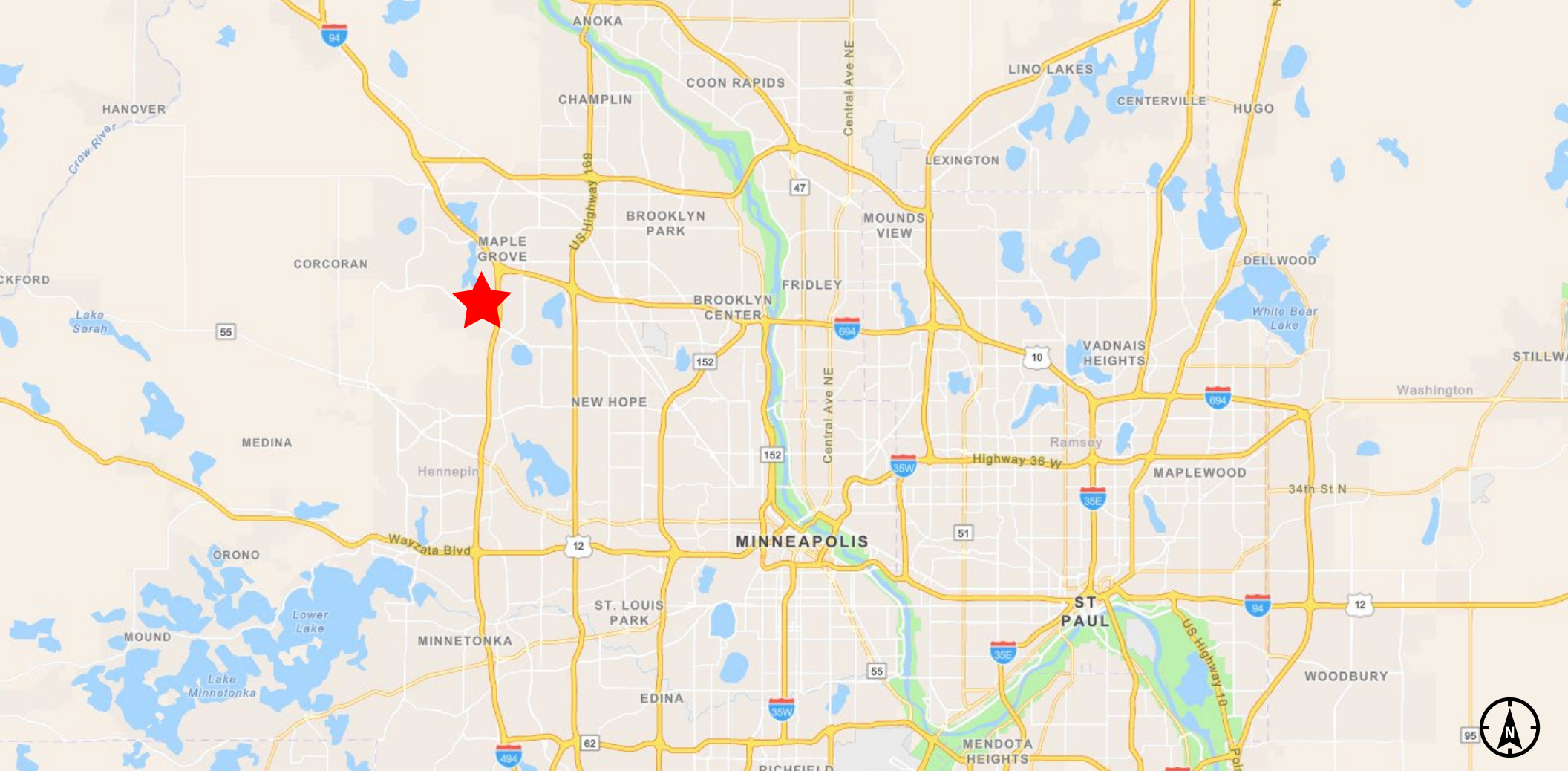
494 and 94 interchange

Building Size	11,745 SF Total
SF Available	11,745 SF Total
Year Built	1989
Clear Height	14'
Loading	Two (2) drive-ins
Zoning	PUD - Planned Unit Development District
Parking	50 spaces
Sublease Rate	Negotiable
Tax/CAM	\$4.42 PSF
Available	Now - Term through July 5th, 2030



Floor plan





Chris Garcia, SIOR
Senior Vice President
+1 612 217 5133
christopher.garcia@jll.com

Kyle Rafshol
Vice President
+1 612 217 6780
kyle.rafshol@jll.com

JLL
250 Nicollet Mall
Suite 1000
Minneapolis, MN 55401

Jones Lang LaSalle Americas, Inc. License #: CO508577000