

**SUITES OF 3,772 SF & 1,214 SF**

Pond Place Medical Center is a first class 3-story medical office building located on Route 69 in Prospect, CT. There is currently a 3,772 SF suite available on the third floor and a 1,214 SF suite available on the first floor. Pond Place Medical Center offers great visibility, modern design, and close proximity to I-84.



For further information, please contact:

Maury Smith | + 860.748.2508 | maury.smith@avisonyoung.com

Avison Young | 225 Asylum Street, 16th Floor | Hartford, CT 06103

POND PLACE MEDICAL CENTER

166 Waterbury Road, Prospect, CT

BUILDING DETAILS



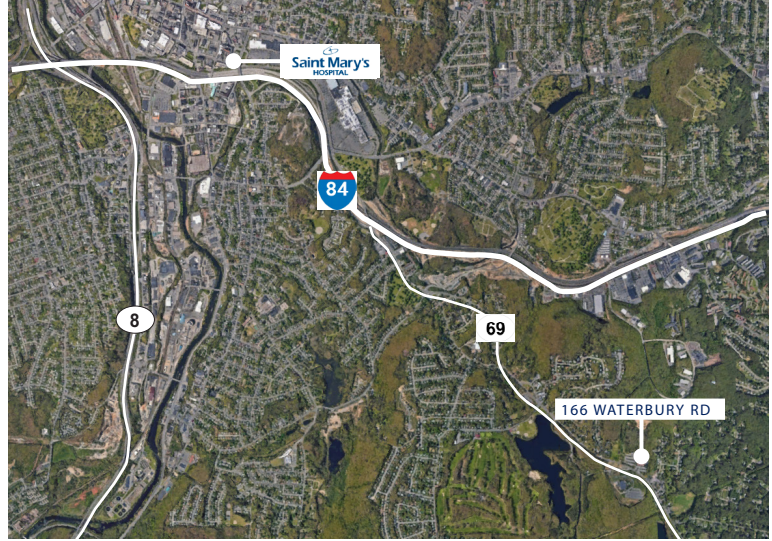
- Size:** 49,772 square feet
- Year Built:** 2001
- Parking:** Newly resurfaced 6/1,000 parking
- Elevators:** One passenger
- Life Safety:** Fully sprinklered
- Access:** Close Proximity to St. Mary's Hospital



PREMIER LOCATION

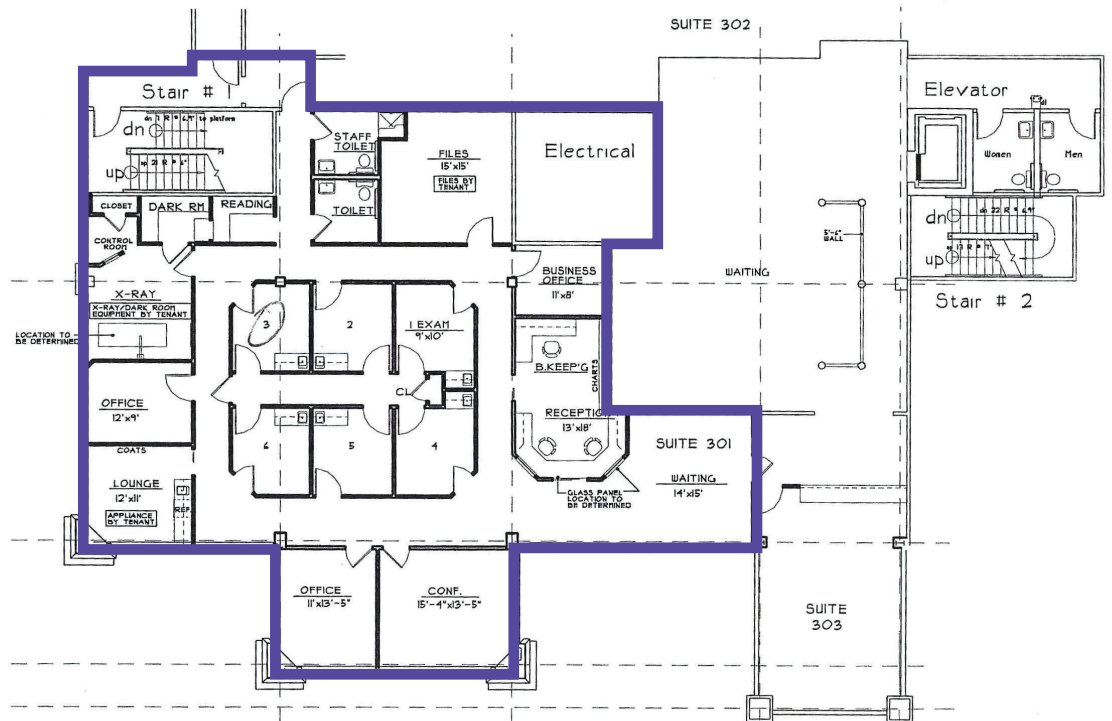


Located on RT 69 with quick access to I-84.



FLOOR PLAN

Suites of **3,772 SF & 1,214 SF** Available



For further information, please contact:

Maury Smith | + 860.748.2508 | maury.smith@avisonyoung.com

Avison Young | 225 Asylum Street, 16th Floor | Hartford, CT 06103

