

Commercial Land FOR SALE



835 N Campbell - Springfield, Mo.

Property Information:

Size: 1.97 acres

Zoned: G.M. - General Manufacturing

Purchase Price: \$899,322

Use: Ideal for Municipal uses, or private development

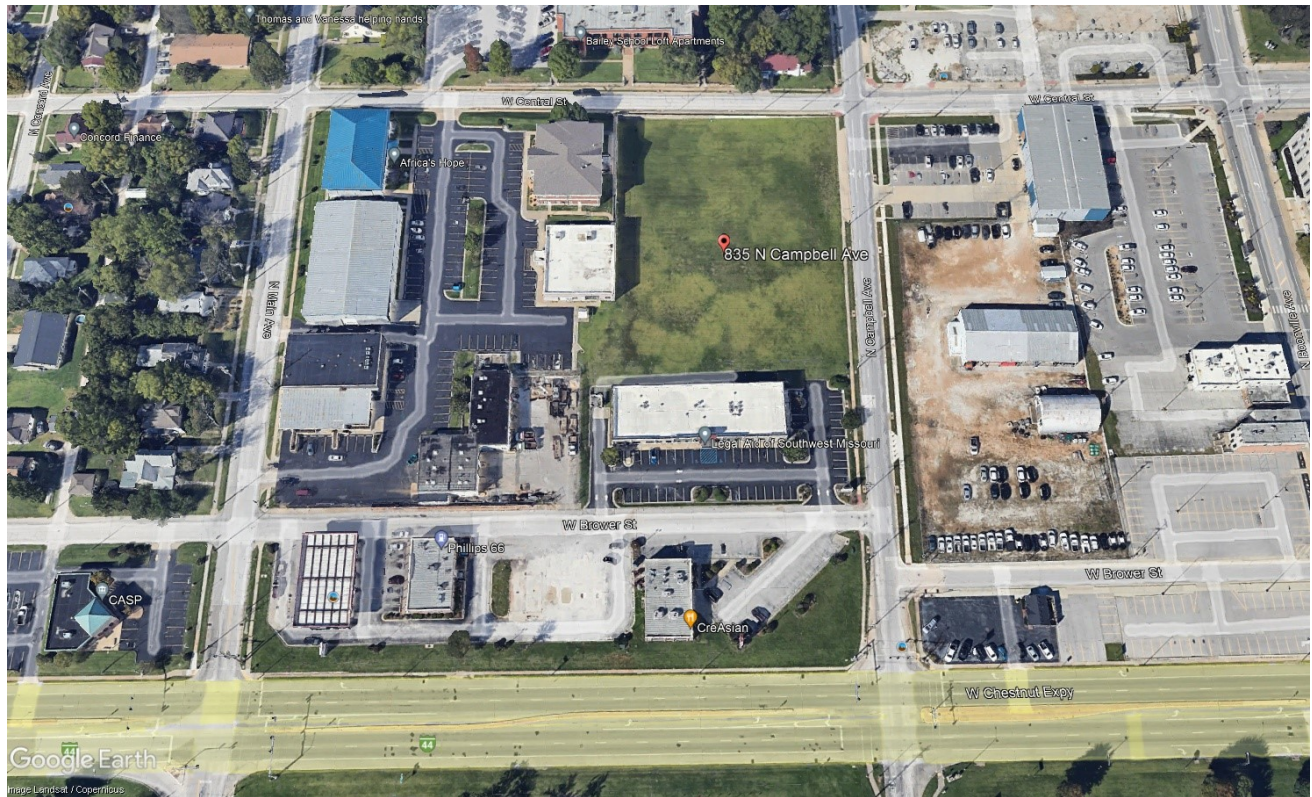
Prime 1.97-Acre Development Opportunity in Springfield's Core!

Unlock the potential of a rare 1.97-acre parcel, just two blocks south of Springfield's Busch Municipal Building, City Hall, and Greene County Courthouse. Zoned GM (General Manufacturing), this prime land is perfect for municipal projects or private development. One of the last available lots in this high-demand area, it's an unmatched opportunity for visionary investors or developers. Act now to secure this strategic location!

Commercial Land FOR SALE



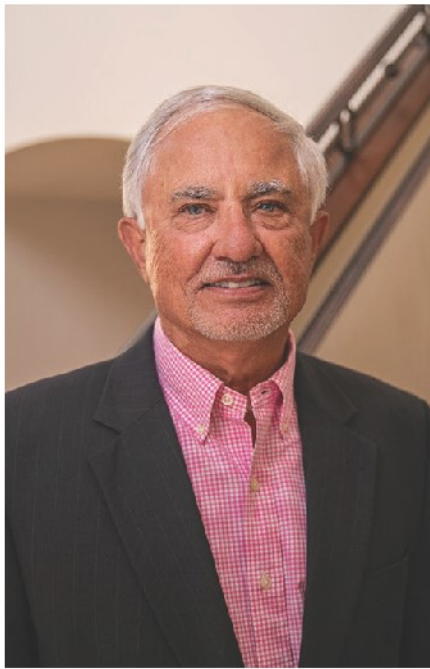
Commercial Land FOR SALE



835 N Campbell - Springfield, Mo.

Property Location:

From Chestnut Expressway, turn north on Campbell, property is at southwest corner of Campbell and Central.



GALEN PELLHAM AIA, CCIM
SBJ Trusted Adviser

- 1971 • **Bachelor of Architecture:** University of Arkansas
- 1975 • **AIA:** American Institute of Architects
- 1979 • **Pellham-Phillips:** Architects & Engineers
- 1984 • **White Rock Marathon, Dallas TX:**
26.2 miles, 3:14 Hours, 7:24/Mile.
- 1985 • **Pellham-Phillips-Hagerman:** Architects & Engineers
- 1999 • **Brokers License:** Missouri Real Estate Commission
- 2000 • **CJR Commercial:**
Top Producer of 354 Carol Jones/CJR Commercial Agents.
- 2001 • **CCIM:** Certified Commercial Investment Member:
Recognized Expert in the Discipline of Commercial and Investment Real Estate Specializing in Market, Financial, and Investment Properties.
- 2012 • **Gold Medal, Lifetime Member:**
1 of 5 Recipients of 1,700 Springfield Board of Realtors Agents
Based upon \$8m-\$16m sales volume for 3 consecutive years.
- 2022 • **Platinum Medal, Lifetime Member:**
1 of 17 Recipients of 2,600 Springfield Board of Realtors Agents.
Based upon \$25m sales volume and 35 transactions.
- 2023 • **Trusted Advisers: Springfield Business Journal**
1 of 20 Recipients Selected by the Springfield Business Journal for
Accountants, Attorneys, Bankers, Financial Advisers, & Realtors
- 2007- Present • **Murney Associates, Realtors®**
 - \$1.6 Billion Annual Sales Volume, 600 agents, 4 locations.
 - RealTrends: Top 50 Independent R.E. Brokerages in the U.S.

• **Pellham-Phillips-Hagerman (PPH)**

- PPH designed many of Springfield's and Branson's notable projects and several other projects in 21 states, including:

Springfield

- **Busch Municipal Building - City of Springfield**
- **Techouse - City Utilities of Springfield**
- **Hammon's Hall for the Performing Arts**
- **Landers Theater Historical Restoration**
- **Ozark Technical Community College**
- **John Q. Hammons Office Building**
- **Schweitzer Church, Sanctuary**
- **St. Elizabeth Ann Seaton Church**
- **Second Baptist Church**
- **James River South Campus**

Branson

- **Branson City Hall & Addition**
- **Roy Clark Theater**
- **Jim Stafford Theater Renovation**
- **Glen Campbell Theater**
- **Dixie Stampede**
- **White River Landing - Branson Belle**
- **Great Geyser Treehouse - Silver Dollar City**
- **Ripley's Believe It or Not! Museum**
- **Top of the Rock Restaurant - Bass Pro Shops**
- **Chateau on the Lake - John Q. Hammons**

Hotels

- **Holidome, Stockton, CA.**
- **Collins Plaza, Cedar Rapids, IA.**
- **Bowling Green Plaza, Bowling Green, KY.**
- **Radisson Hotel, Davenport, IA.**
- **Kansas City Station Hotel, Kansas City, MO.**
- **Holiday Inn, Springdale, AR.**
- **Embassy Suites, Montgomery AL.**
- **Embassy Suites, Greensboro, NC.**
- **Embassy Suites, Columbia, SC.**
- **Embassy Suites, Des Moines, IA.**

Pellham has the technical knowledge to develop schematic designs formulating the "highest and best" use of his Client's property. As an Architect, Pellham has a "creative" approach to the real estate market, able to "visualize" uses of properties.

To expand on his Real Estate knowledge, Pellham obtained the CCIM designation gaining in-depth knowledge of **Financial Analysis** (measuring investment value performance); **Market Analysis** (supply and demand factors); **User Decisions Investment Analysis** (determining a client's investment strategy).

I have added running the White Rock Marathon to my Bio. For 2 years, I would run 3-6 miles 4 to 5 days a week, adding longer runs (11-21 miles) months before the marathon. This required running in the heat, rain, and cold, which required commitment and perseverance.

Running the 26.2 miles was challenging, hitting the "wall" at 23 miles, but sprinting to the finish line.

With that same commitment and perseverance, I serve my clients.



1625 E. Primrose | Springfield, MO 65804 | 417.823.2300 | murney.com

GALEN PELLHAM AIA, CCIM, Trusted Adviser | C: 417-839-0156 F: 417-447-5447 | GPELLHAM@MURNEY.COM