



Ranked in Top 50
Commercial Firms in U.S.



FOR LEASE

87 West Main St, New Britain, CT 06051
2 Units – 2,200± SF & 2,600± SF Street Level Retail
LEASE RATE: \$15/SF Modified Gross

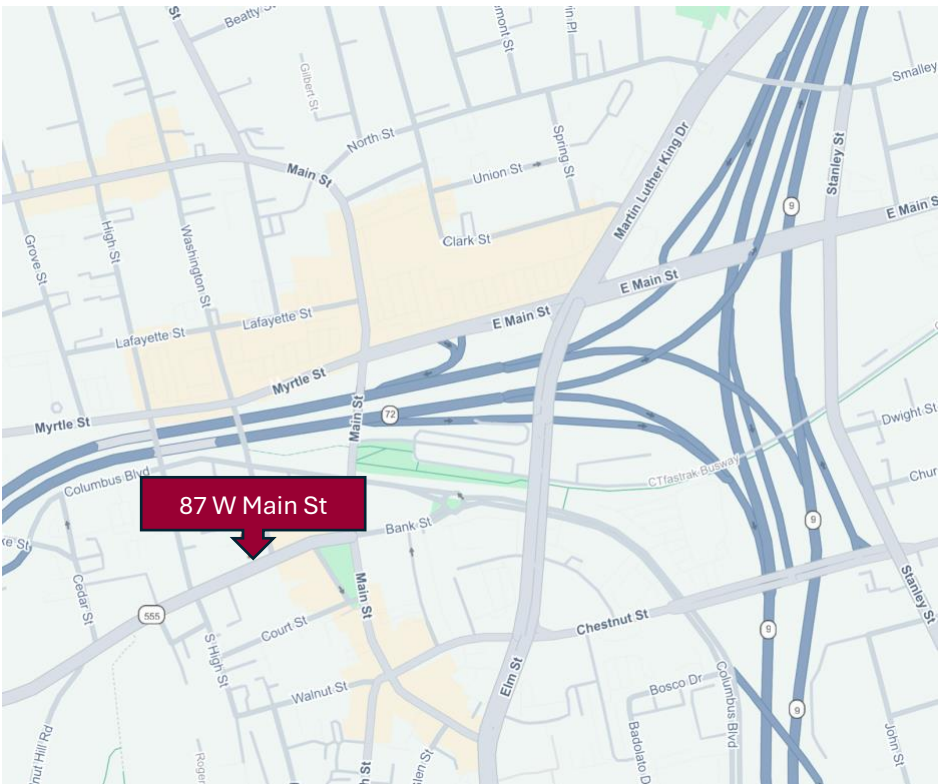
HIGHLIGHTS

- 2 Street Level Retail Spaces
- City Center
- 400+ New Apartments in Downtown Area
- Strong Foot Traffic
- Walking Distance to Popular Restaurants
- Walking Distance to Mass Transit

CONTACT

Thomas Wilks
(860) 761-6018 | (860) 478-7954
twilks@orlcommercial.com

Jay L. Morris | (860) 721-0033
jmorris@orlcommercial.com



WWW.ORLCOMMERCIAL.COM



2 Summit Place, Branford, CT 06405 | (203) 488-1555 | (203) 315-4046

2430 Silas Deane Highway, Rocky Hill, CT 06067 | (860) 721-0033 | (860) 721-7882

Broker of Record: Jay Morris | (860) 721-0033 | jmorris@orlcommercial.com | License: REB.0755257

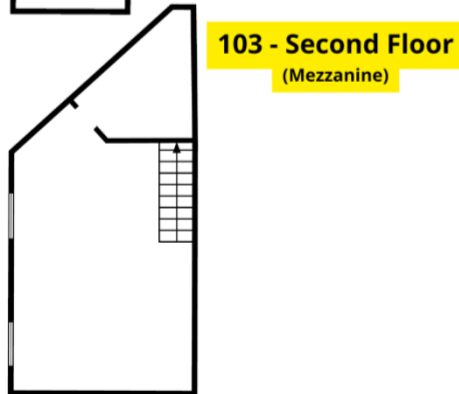
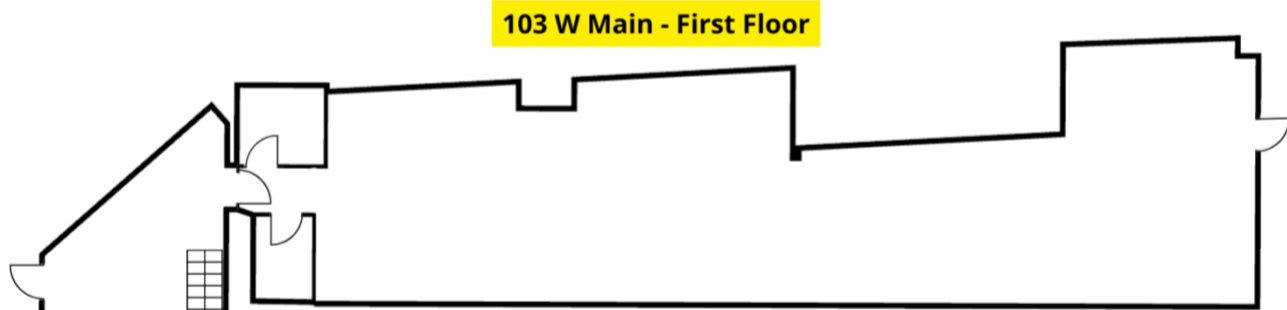
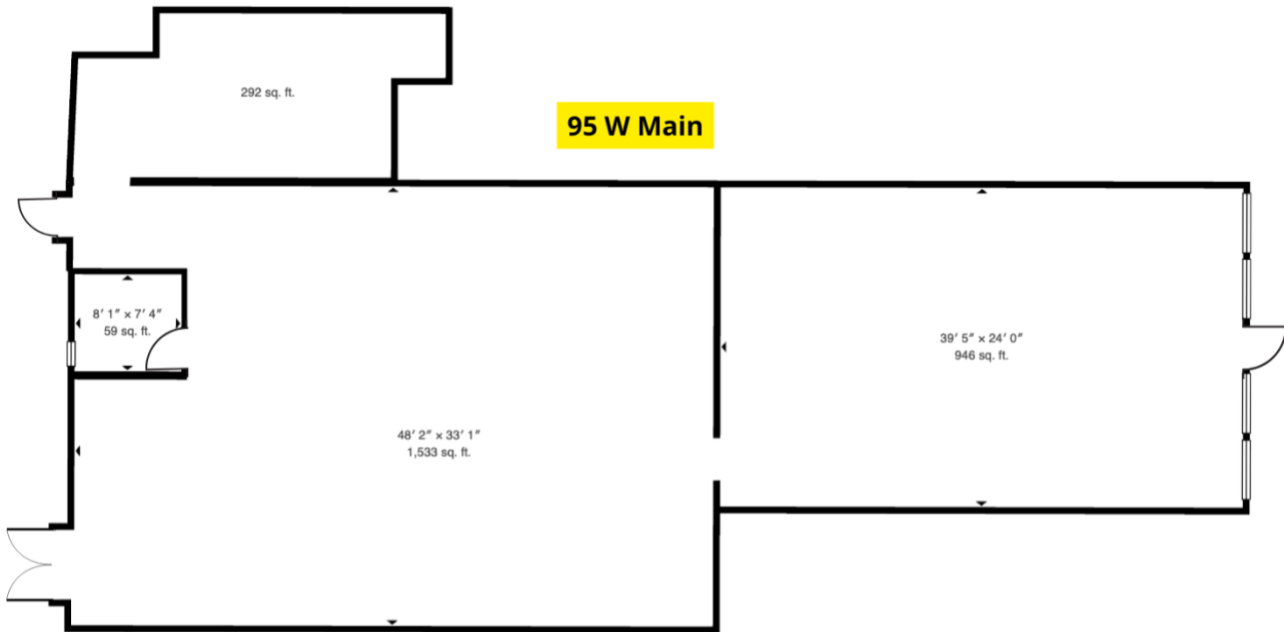


FOR LEASE

LEASE RATE \$15/SF MODIFIED GROSS

87 West Main St, New Britain, CT 06051

2,200± SF & 2,600± SF Street Level Retail



WEST MAIN STREET



WWW.ORLCOMMERCIAL.COM



2 Summit Place, Branford, CT 06405 | (203) 488-1555 | (203) 315-4046

2430 Silas Deane Highway, Rocky Hill, CT 06067 | (860) 721-0033 | (860) 721-7882

Broker of Record: Jay Morris | (860) 721-0033 | jmorris@orlcommercial.com | License: REB.0755257

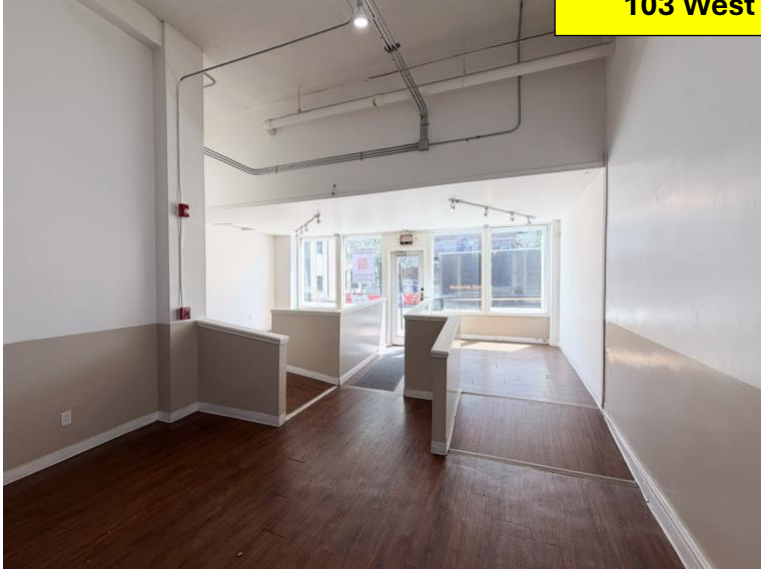
LEASE RATE \$15/SF MODIFIED GROSS

87 West Main St, New Britain, CT 06051

2,200± SF & 2,600± SF Street Level Retail

FOR LEASE 

103 West Main Street



WWW.ORLCOMMERCIAL.COM



2 Summit Place, Branford, CT 06405 | ☎ (203) 488-1555 | 📞 (203) 315-4046

2430 Silas Deane Highway, Rocky Hill, CT 06067 | ☎ (860) 721-0033 | 📞 (860) 721-7882

Broker of Record: Jay Morris | (860) 721-0033 | jmorris@orlcommercial.com | License: REB.0755257

BUILDING INFORMATION

GROSS BLD. AREA: 29,353± SF

AVAILABLE AREA:

Unit 95 – 2,200± SF

Unit 103 – 2,600± SF

CLEAR HEIGHT: 12'

CONSTRUCTION: Brick, Masonry

ROOF TYPE: T&G, Rubber Membrane

YEAR BUILT: 1920

MECHANICAL EQUIPMENT

AIR CONDITIONING: Yes

HEAT: Gas

SPRINKLERED: No

POWER: 200amp

ELEVATORS: No

SITE INFORMATION

SITE AREA: 0.50± Acres

ZONING: CBD

PARKING: Street & Reserved

SIGNAGE: On Building

VISIBILITY: Directly on West Main St

HWY ACCESS: Rt. 9 & I-84

UTILITIES

SEWER/WATER: City

GAS: Yes

EXPENSES

RE TAXES: Tenant Landlord

UTILITIES: Tenant Landlord

INSURANCE: Tenant Landlord

MAINTENANCE: Tenant Landlord

JANITORIAL: Tenant Landlord

CONTACT

Thomas Wilks

(860) 761-6018 | (860) 478-7954

twilks@orlcommercial.com

Jay L. Morris | (860) 721-0033

jmorris@orlcommercial.com



95 West Main Street

