

2215 Tech Court, Woodstock, IL

Available: 4,500 – 10,000 SF



Available Now

FOR SALE/LEASE: 10,000 SF | Perfect for User or User/Investor

BUILDING SIZE: 10,000 SF for Sale

AVAILABLE FOR LEASE:

Unit A: 4,500 SF + Mezzanine

Unit B: 5,500 SF (Available June 2025)

LOT SIZE: 1.18 Acres

YEAR BUILT: 2005

LOADING:

Unit A: 12' x 14' Drive in Door

Unit B: 12' x 14' Drive in Door, One Truck Dock

CEILING HEIGHT:

Unit A: 15'-17' Clear Span

Unit B: 17'-19' Clear Span

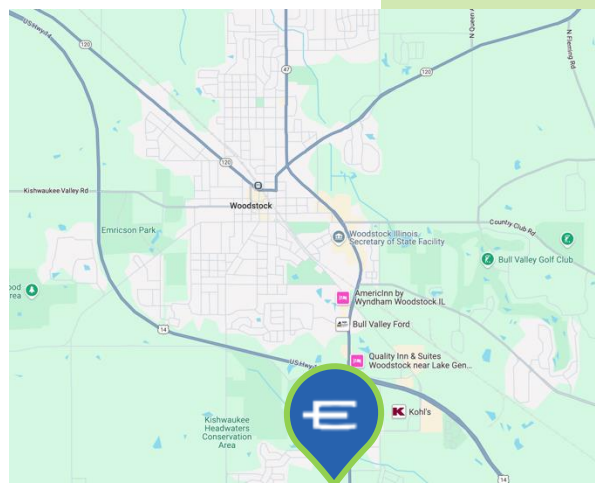
ZONING: M1

POWER: 400 Amp/480 Volt/3-Phase

HVAC: Gas Forced Air/Central Air/Fully Climate Controlled

SPRINKLERED: Yes

PARKING: 16 Spaces



LEASE RATE UNIT A: \$12 PSF MG

LEASE RATE UNIT B: \$13 PSF MG

SALE PRICE FOR BUILDING: \$900,000

SCAN FOR LISTING



Kevin Kaplan, CCIM

309-261-0920

kkaplan@entreccommercial.com

ENTRE
Commercial Realty LLC

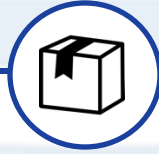
SITE PLAN



Facility Highlights



FULLY CLIMATE
CONTROLLED

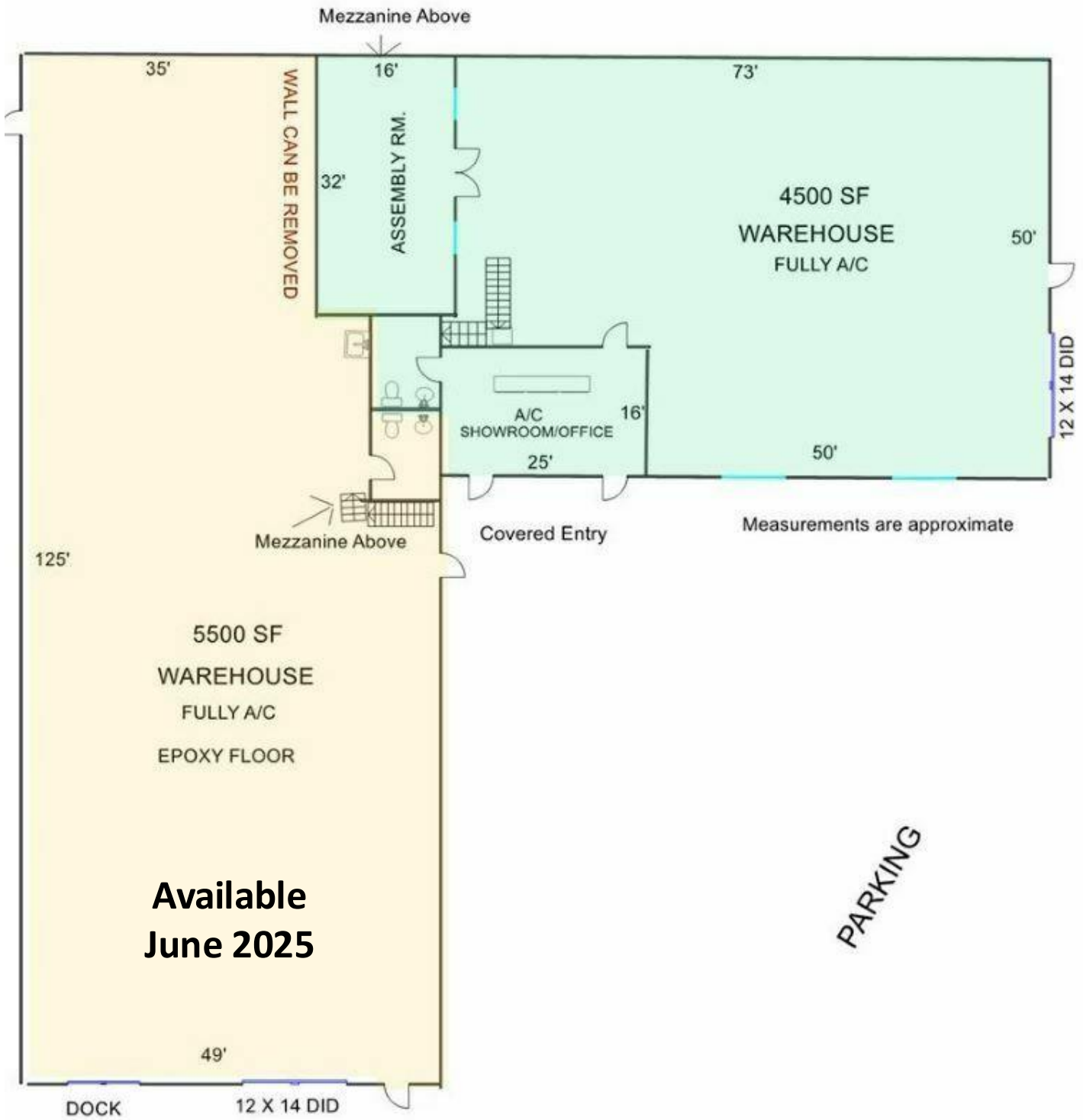


MEZZANINE FOR
EXTRA STORAGE

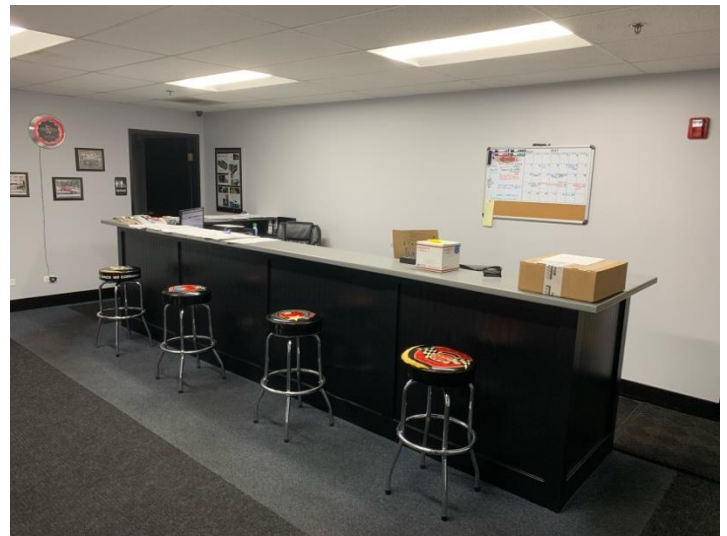


DRIVE IN
DOOR

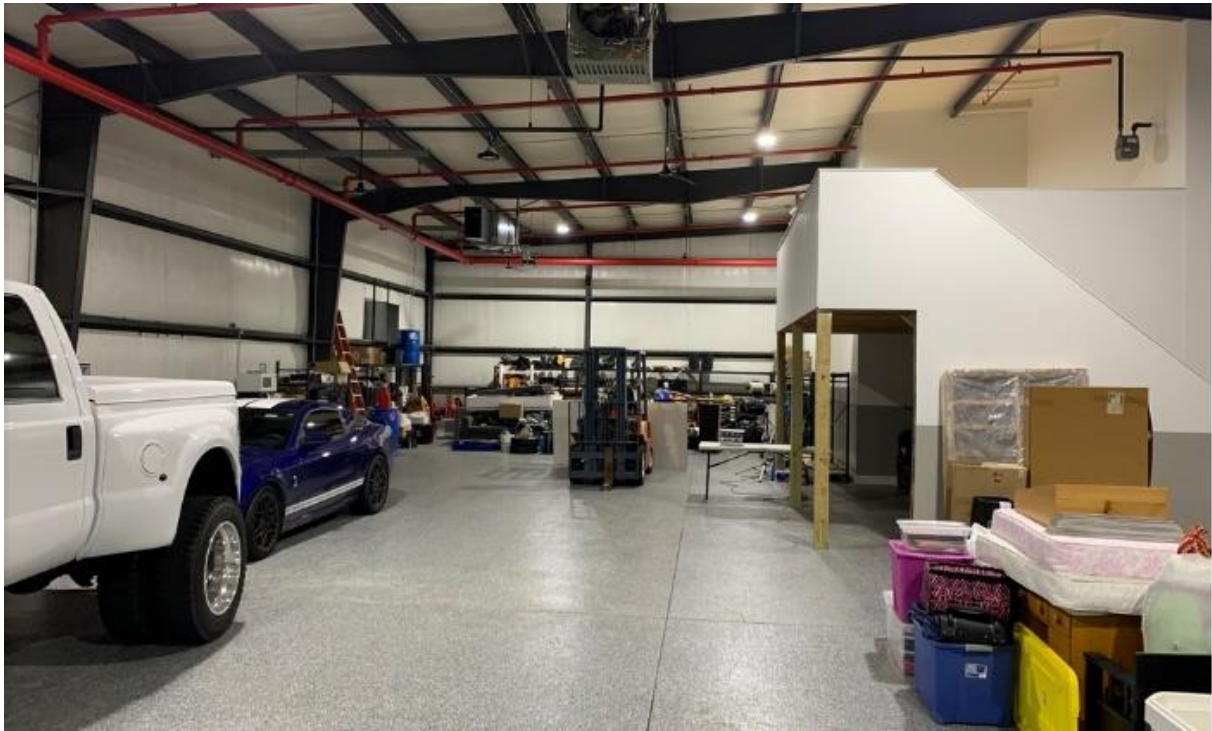
FLOORPLAN



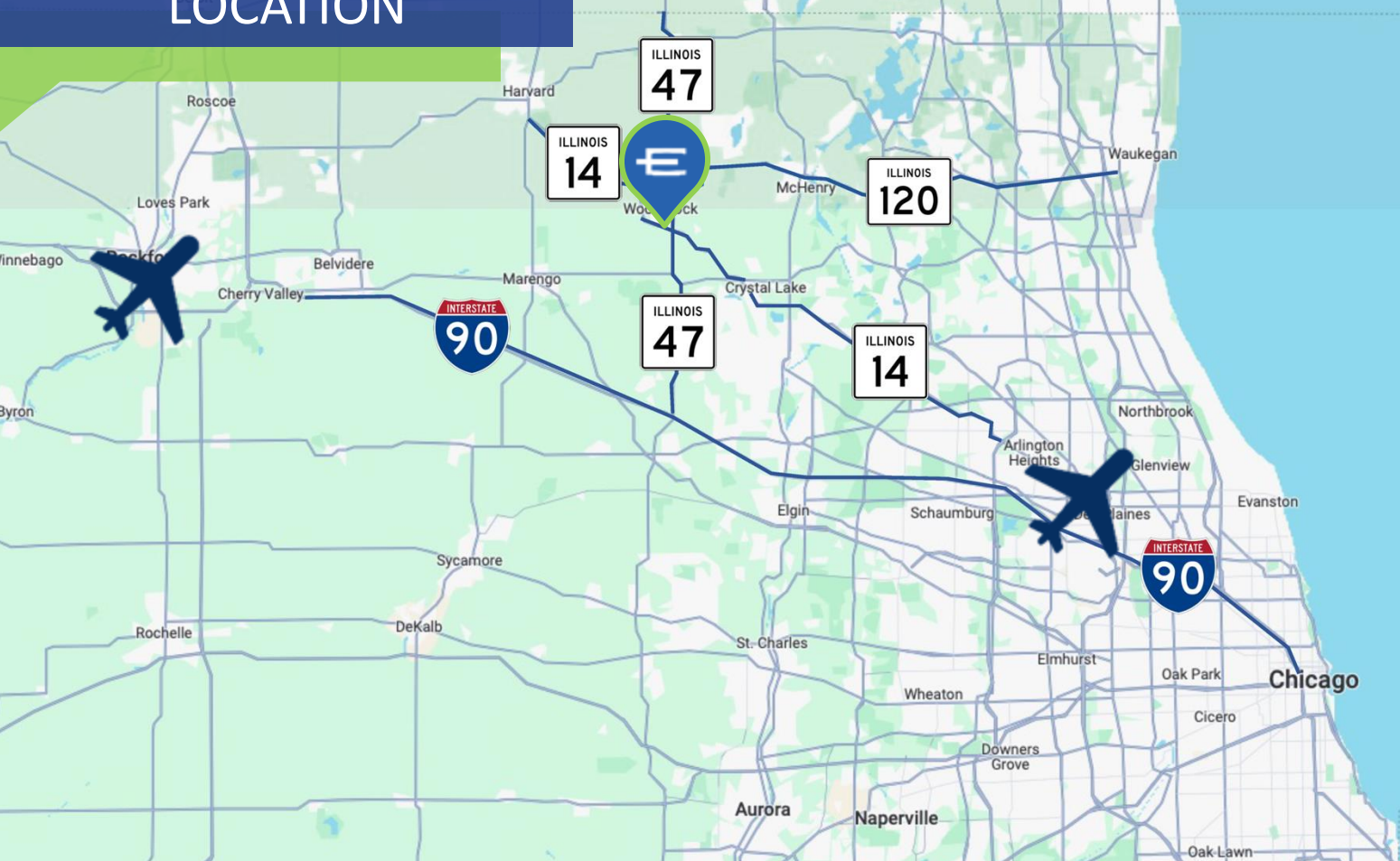
PHOTOS



PHOTOS

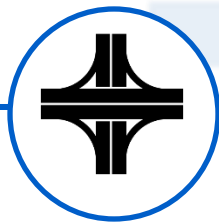


LOCATION



2215 Tech Court, Woodstock, IL

SCAN FOR MAP VIEW



**LOCATED OFF
US HWY 14 & RT. 47**



**ACCESS TO I-90
VIA RT. 47**

ENTRE
Commercial Realty LLC

Kevin Kaplan, CCIM
309-261-0920
kkaplan@entrecmercial.com