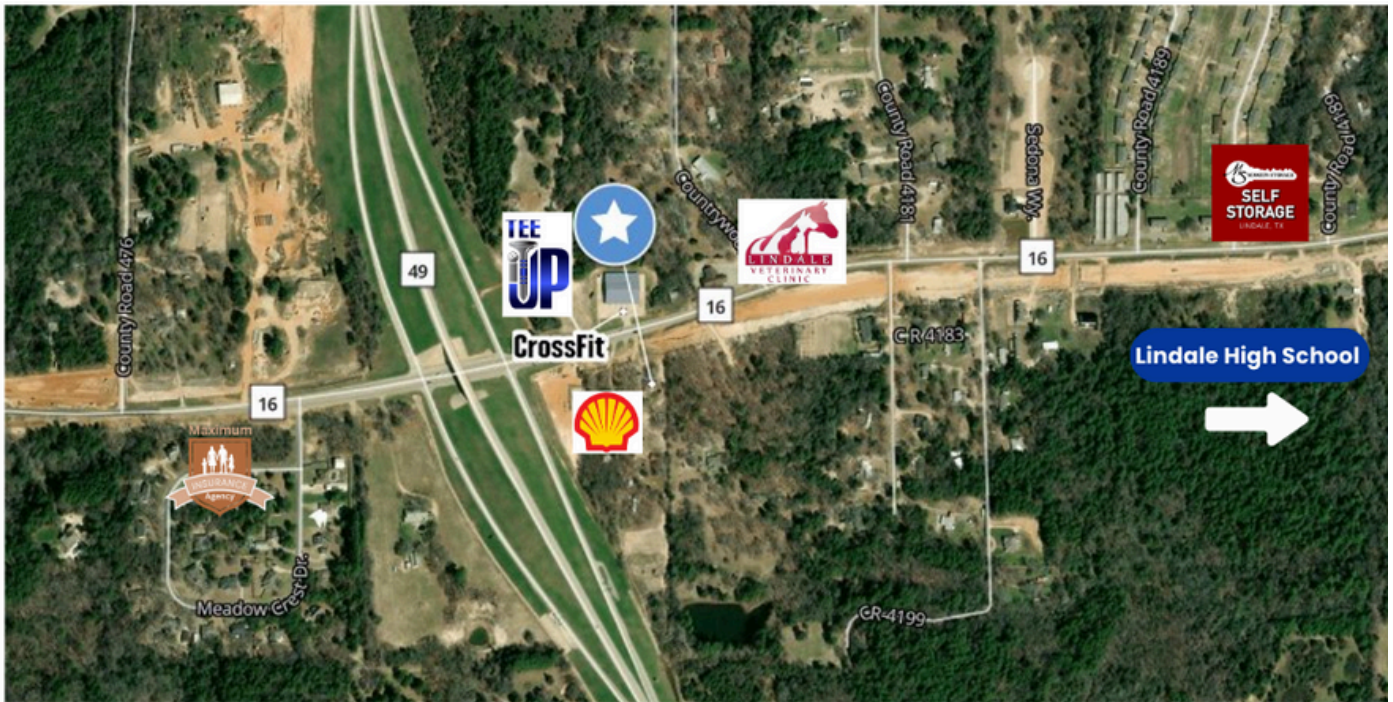


FOR SALE

\$795,000 | Retail Site



Acreage

1.8 Acres

5 Mile Radius Demographics

Population- 20,912

Household Income- \$124,661

Households- 7,864

Traffic Counts

7,869 VPD

Key Features:

- Highly visible off corner lot with dual road frontage
- Strong traffic flow from both Toll 49 and FM 16
- Flat, build-ready topography with utility access nearby
- Rapidly expanding Lindale market with high residential and commercial growth
- Just minutes from Lindale's historic downtown and new developments

Austin Luce
austin@mlp-tx.com

16455 FM 16, Lindale, TX 75771

MLP-TX.COM