

Sky Business Center

26320 & 26330 Diamond Place, Santa Clarita, CA

For Lease
Industrial & Office



- Located within the Master planned Centre Pointe Business Park
- High Image Industrial Complex
- Zoned SCBP
- Fire Sprinkler System
- 1x200Amp, 277-480Volt, 3Phase
- 24' clearance
- Adjacent to Cross Valley Connector (Hwy 126)
- Close to numerous retail and restaurant amenities



Pamela Verner
661.714.5271
DRE Lic #01815191
pamela@scvcommercial.com

Disclaimer: No warranty, express or implied, is made as to the accuracy of the information contained herein. This information is submitted subject to errors, omissions, change of price, rental or other conditions, withdrawal without notice, and is subject to any special listing conditions imposed by our principals. Cooperating brokers, buyers, tenants and other parties who receive this document should not rely on it, but should use it as a starting point of analysis, and should independently confirm the accuracy of the information contained herein through a due diligence review of the books, records, files and documents that constitute reliable sources of the information described herein. SCV Commercial Real Estate Lic #01523815

Sky Business Center

26320 & 26330 Diamond Place, Santa Clarita, CA

For Lease
Industrial & Office

AVAILABILITY

26330 Unit 110- 2,153 sf former pediatrician office. 1st floor consists of lobby/reception area, private office, 3 exam rooms with sinks, nurses station with built in cabinets, and a single stall restroom. 2nd floor consists of breakroom, private offices, and single stall restroom. \$1.65 sf NNN.

26320 Unit 120- 2,332 sf Industrial unit. 1st floor entry kitchenette, warehouse with single stall restroom. 2nd floor consists of 3 private offices, bull pen, and single stall restroom. \$1.55 sf NNN.



Pamela Verner
661.714.5271
DRE Lic #01815191
pamela@scvcommercial.com

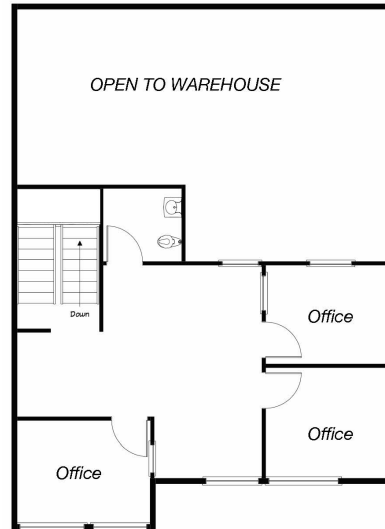
Disclaimer: No warranty, express or implied, is made as to the accuracy of the information contained herein. This information is submitted subject to errors, omissions, change of price, rental or other conditions, withdrawal without notice, and is subject to any special listing conditions imposed by our principals. Cooperating brokers, buyers, tenants and other parties who receive this document should not rely on it, but should use it as a starting point of analysis, and should independently confirm the accuracy of the information contained herein through a due diligence review of the books, records, files and documents that constitute reliable sources of the information described herein. SCV Commercial Real Estate Lic #01523815

Sky Business Center

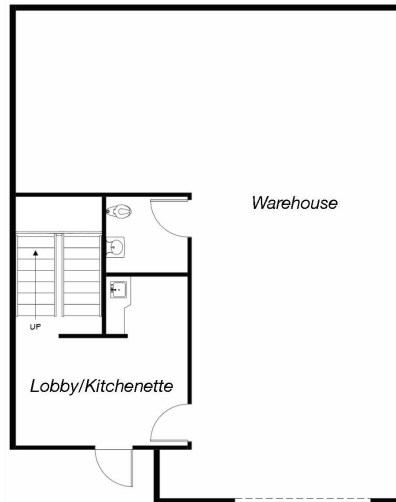
26320 & 26330 Diamond Place, Santa Clarita, CA

For Lease

Industrial & Office



UNIT 120
Mezzanine Floor Plan



UNIT 120
First Floor Plan

**Not to Scale

*Not to Scale



Pamela Verner
661.714.5271
DRE Lic #01815191
pamela@scvcommercial.com

Disclaimer: No warranty, express or implied, is made as to the accuracy of the information contained herein. This information is submitted subject to errors, omissions, change of price, rental or other conditions, withdrawal without notice, and is subject to any special listing conditions imposed by our principals. Cooperating brokers, buyers, tenants and other parties who receive this document should not rely on it, but should use it as a starting point of analysis, and should independently confirm the accuracy of the information contained herein through a due diligence review of the books, records, files and documents that constitute reliable sources of the information described herein. SCV Commercial Real Estate Lic #01523815

Sky Business Center

26320 & 26330 Diamond Place, Santa Clarita, CA

For Lease
Industrial & Office



Pamela Verner
661.714.5271
DRE Lic #01815191
pamela@scvcommercial.com

Disclaimer: No warranty, express or implied, is made as to the accuracy of the information contained herein. This information is submitted subject to errors, omissions, change of price, rental or other conditions, withdrawal without notice, and is subject to any special listing conditions imposed by our principals. Cooperating brokers, buyers, tenants and other parties who receive this document should not rely on it, but should use it as a starting point of analysis, and should independently confirm the accuracy of the information contained herein through a due diligence review of the books, records, files and documents that constitute reliable sources of the information described herein. SCV Commercial Real Estate Lic #01523815