



2035 W Lake Lansing Rd

East Lansing, Michigan 48823

Property Highlights

- Located in Asher Court Office Park
- Desirable East Lansing location
- Easy access to MSU campus
- Convenient to US-127/Lake Lansing Road hub

Offering Summary

Lease Rate:	\$14.50 SF/yr (MG)
Building Size:	7,500 SF
Available SF:	665 SF

For More Information

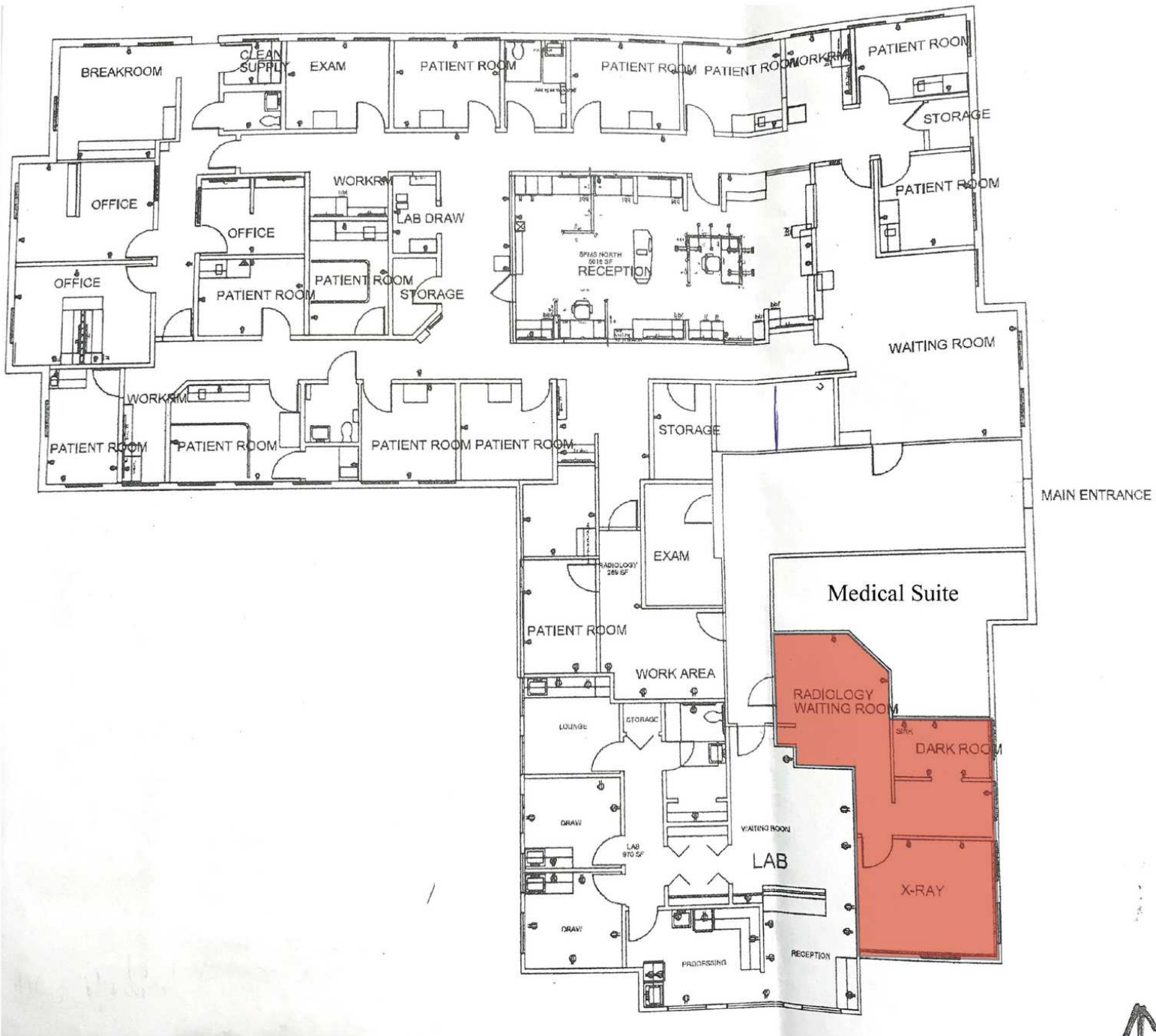


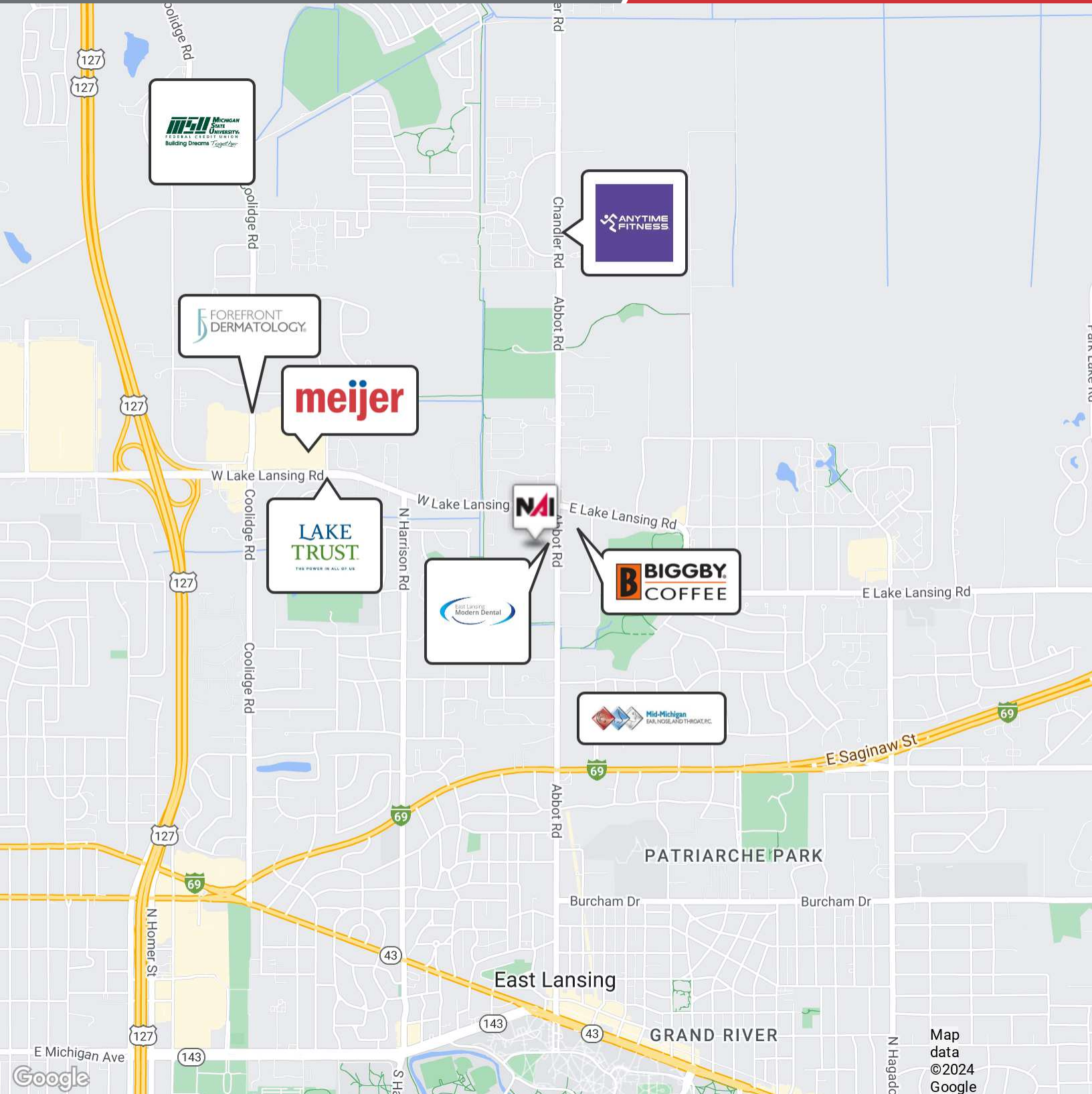
Steve Slater

Associate Broker

O: 517 487 9222 | C: 517 749 7914

steveslater@naimidmichigan.com

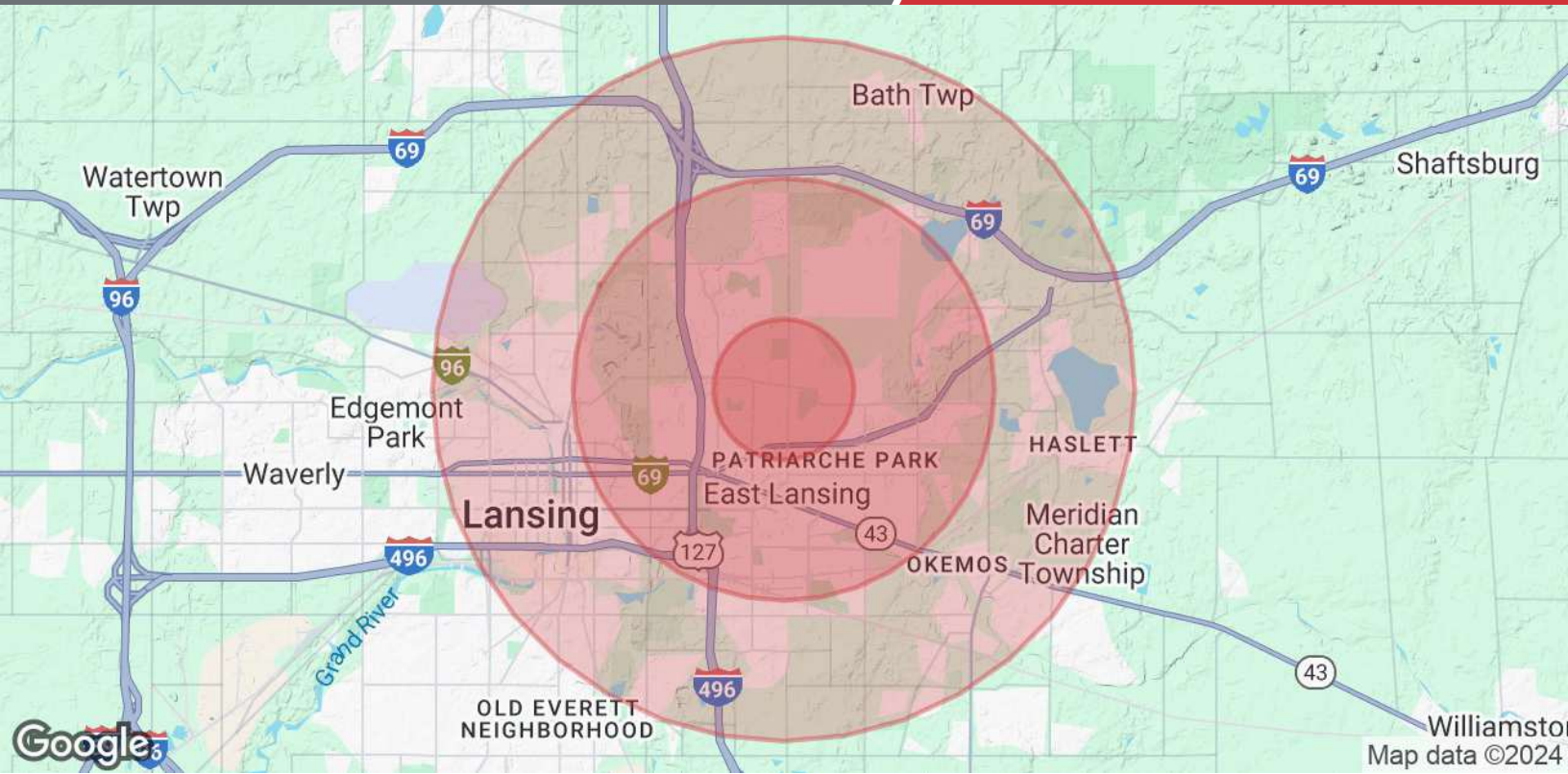




NO WARRANTY OR REPRESENTATION, EXPRESS OR IMPLIED, IS MADE AS TO THE ACCURACY OF THE INFORMATION CONTAINED HEREIN, AND THE SAME IS SUBMITTED SUBJECT TO ERRORS, OMISSIONS, CHANGE OF PRICE, RENTAL OR OTHER CONDITIONS, PRIOR SALE, LEASE OR FINANCING, OR WITHDRAWAL WITHOUT NOTICE, AND OF ANY SPECIAL LISTING CONDITIONS IMPOSED BY OUR PRINCIPALS. NO WARRANTIES OR REPRESENTATIONS ARE MADE AS TO THE CONDITION OF THE PROPERTY OR ANY HAZARDS CONTAINED THEREIN ARE INTENDED TO BE IMPLIED.

2149 Jolly Road, Suite 200
Okemos, MI 48864
517 487 9222 tel
naimidmichigan.com

Map data
©2024
Google



Population	1 Mile	3 Miles	5 Miles
Total Population	9,516	76,772	163,491
Average Age	32.3	28.8	29.5
Average Age (Male)	32.7	28.9	29.3
Average Age (Female)	32.2	29.1	30.0
Households & Income	1 Mile	3 Miles	5 Miles
Total Households	4,307	28,206	60,985
# of Persons per HH	2.2	2.7	2.7
Average HH Income	\$61,071	\$53,920	\$51,930
Average House Value	\$192,711	\$154,976	\$141,892

2020 American Community Survey (ACS)