

# PLYMOUTH TOWNE CENTER

41424-41640 Ann Arbor Road / Plymouth, MI



MID-AMERICA<sup>®</sup>  
Real Estate-Michigan, Inc.

NEW NATIONAL GROCER  
AND SHOP SPACE



RETAIL OPPORTUNITY

# PLYMOUTH TOWNE CENTER



## Address

41424-41640 Ann Arbor Road  
Plymouth, MI 48170

## Availability

Up to 10,000 SF  
(space is divisible)

## Features

Plymouth Towne Center is located on the northwest corner of Haggerty and Ann Arbor Roads. The property is anchored by LA Fitness, CVS Pharmacy, and a new national grocer. The location provides strong demographics with high incomes, strong traffic counts, multiple points of access, and abundant parking. Join national, regional, and local retailers in a conveniently located shopping center, one mile west of the full interchange off I-275. New construction space with up to 10,00 SF available now.

## Co-Tenants



## Demographics (2022)

	1 MILES	3 MILES	5 MILES
POPULATION	7,983	79,733	218,446
HOUSEHOLDS	4,068	34,425	90,265
AVG HOUSEHOLD INCOME	\$103,616	\$115,735	\$125,073
DAYTIME POPULATION	11,510	95,931	241,657

# PLYMOUTH TOWNE CENTER



## SITE DATA

SHOPPING CENTER NET LAND AREA - 17.45 ACRES +/-

BUILDING	ZONING (+)	BUILDING AREA (S.F.)
EXISTING COMMERCIAL A-1	ARC	4,000
EXISTING COMMERCIAL A-2	ARC	12,000
EXISTING COMMERCIAL A-3	ARC	13,370
EXISTING COMMERCIAL A-4	ARC	2,550
BUILDABLE AREA "A"	ARC	8,000
BUILDABLE AREA "B-1"	ARC	15,000
BUILDABLE AREA "B-2"	ARC	12,740
BUILDABLE AREA "C"	ARC	49,200
BUILDABLE AREA "D"	OS-ARC	3,800
BUILDABLE AREA "E"	ARC	8,000

TOTAL BUILDABLE AREA 130,969

ARC - ANN ARBOR ROAD CORRIDOR

OS-ARC - OFFICE SERVICE-ANN ARBOR ROAD CORRIDOR

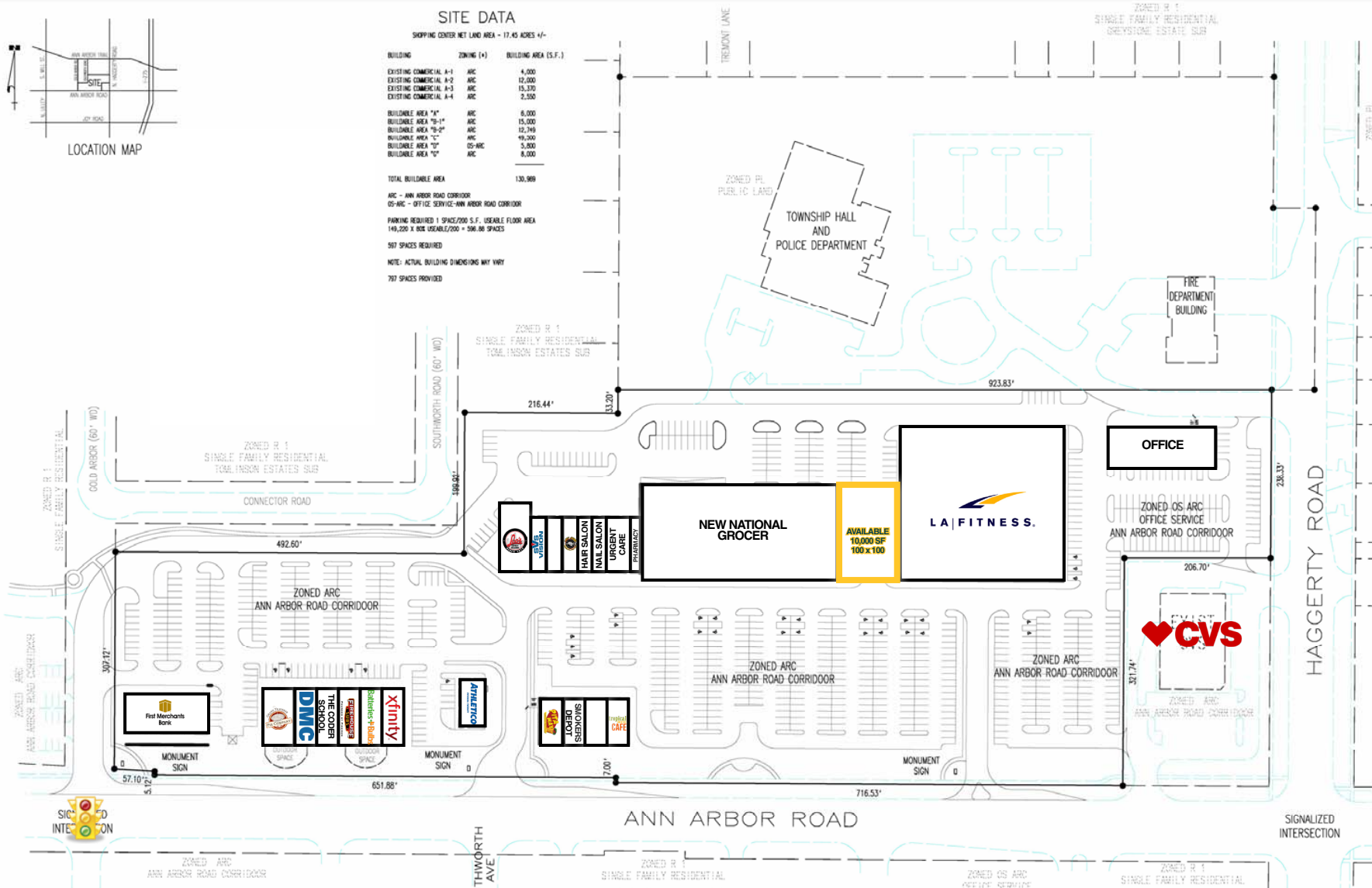
PARKING REQUIRED 1 SPACE/200 S.F. USEABLE FLOOR AREA

149,200 X BOX USEABLE/200 = 596.80 SPACES

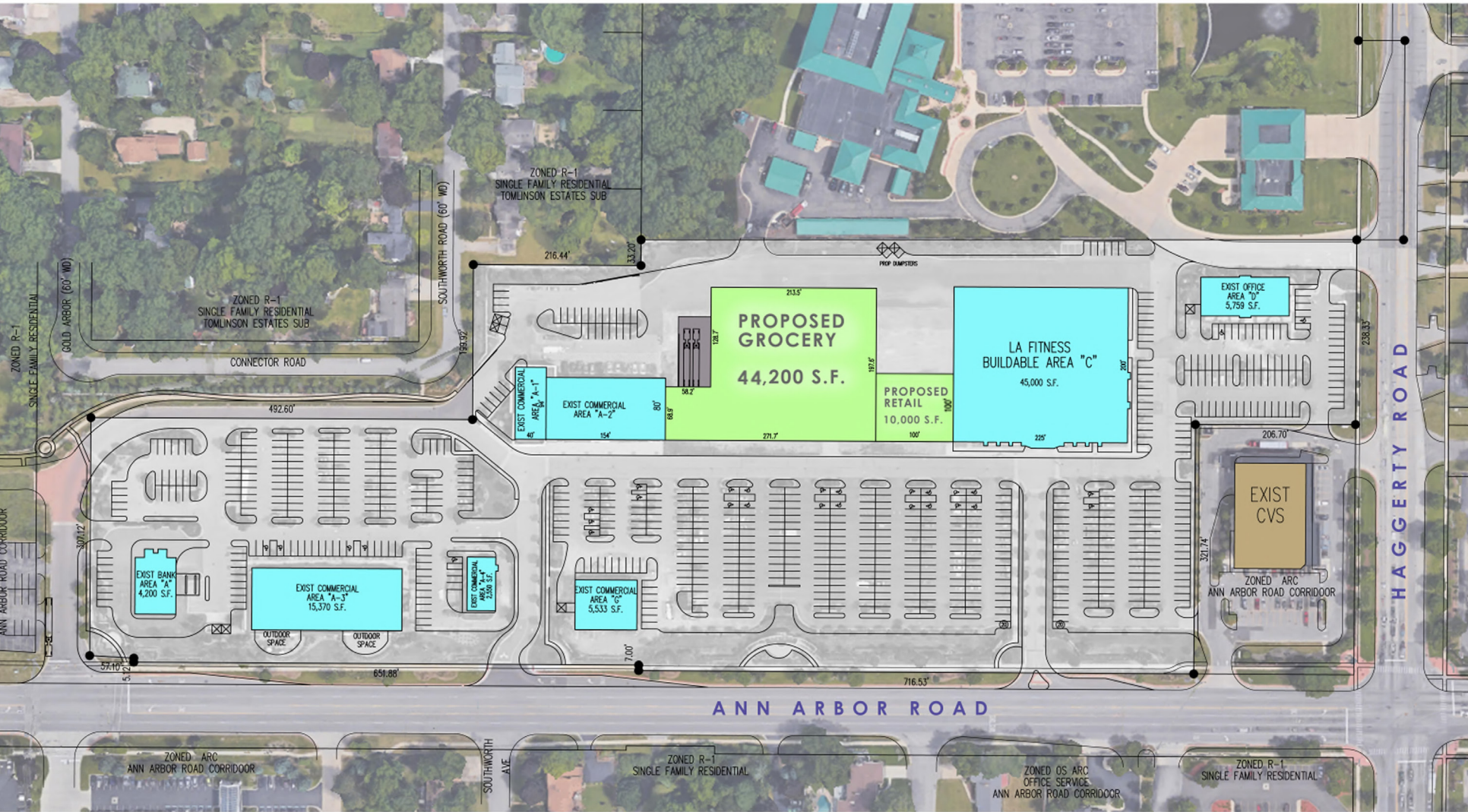
597 SPACES REQUIRED

NOTE: ACTUAL BUILDING DIMENSIONS MAY VARY

797 SPACES PROVIDED



# PLYMOUTH TOWNE CENTER

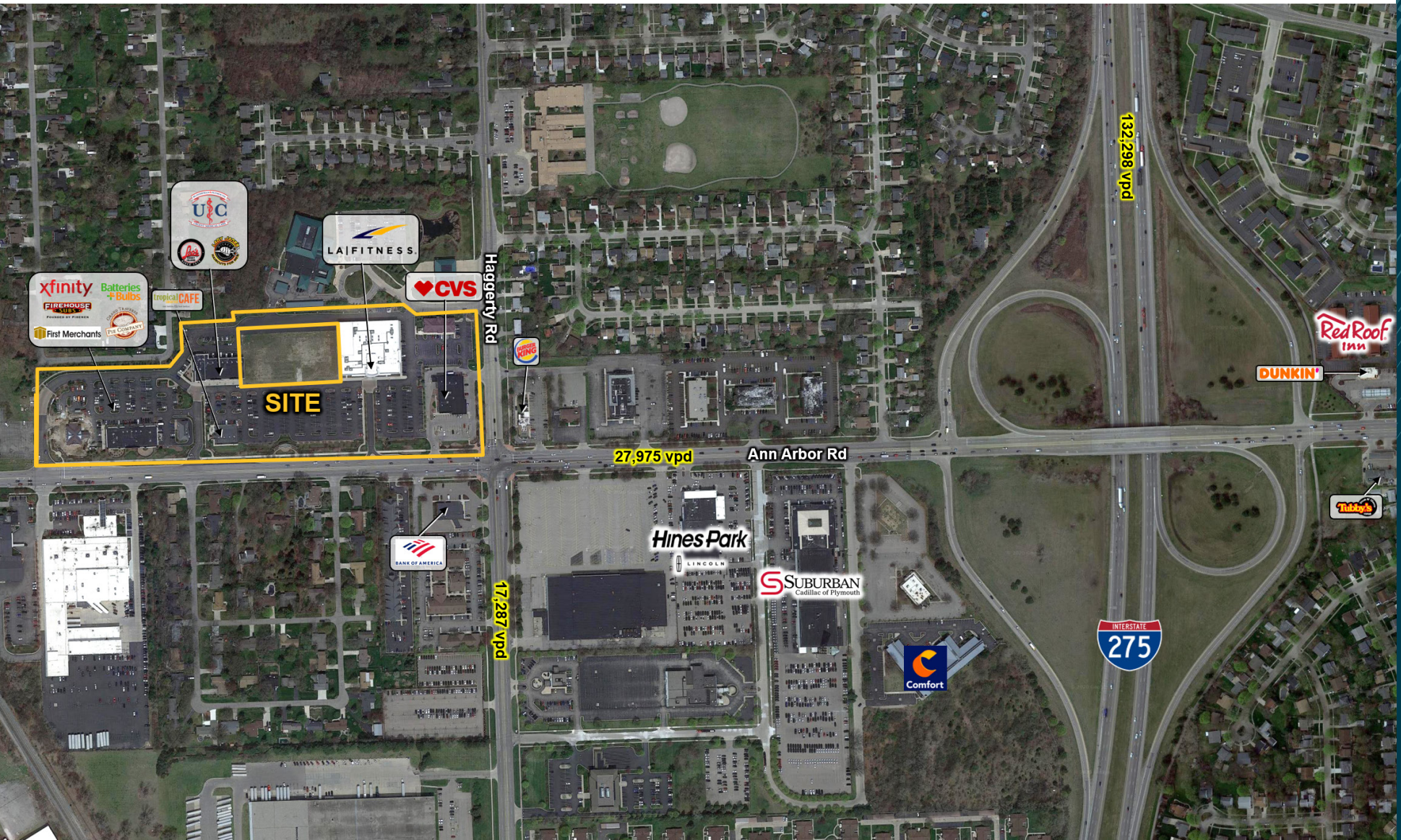


# PLYMOUTH TOWNE CENTER



ELEVATION

# PLYMOUTH TOWNE CENTER



AERIAL

# PLYMOUTH TOWNE CENTER



**Brad  
Rosenberg**

Mid-America Real Estate -  
Michigan, Inc.

T: 248.855.6800

**BRosenberg@MidAmericaGrp.com**

**Eric  
Birnholtz**

Mid-America Real Estate -  
Michigan, Inc.

T: 248.855.6800

**EBirnholtz@MidAmericaGrp.com**



38500 Woodward Ave, Suite 100  
Bloomfield Hills, Michigan 48304  
248.855.6800

**MidAmericaGrp.com**

CONTACT