

## THE PLAZA ON 529

**FOR LEASE:** NEW CONSTRUCTION RETAIL/FLEX CENTER WITH 28,080 SF

**SPACES AVAILABLE:** ±1,000 - 7,020 SF



# 16332 FM 529

Houston, TX 77095

PLEASE CALL FOR MORE INFORMATION

**DANIEL WANG**

Director  
+1 713 260 0217  
Daniel.Wang4@cushwake.com

**MICHAEL BURGOWER**

Associate  
+1 713 331 1747  
michael.burgower@cushwake.com

[cushmanwakefield.com](http://cushmanwakefield.com)



16332 FM 529 HOUSTON, TX 77095

# PROPERTY OVERVIEW



4 buildings - each up to 7,020 SF  
Opportunity to subdivide, starting at 1,000 SF



Shadow anchored to dominant retail anchors:  
Walmart, Burlington, Dick's Sporting Goods



FM 529, a major east to west artery forms thriving  
commercial corridor - 44,912 Vehicles Per Day



Enveloped by Rooftops: Thriving, master plan  
communities of Copperfield, Somerall,  
and Stone Creek



Ample parking: 4.1 / 1,000 ratio





16332 FM 529 HOUSTON, TX 77095

# LOCATION MAP



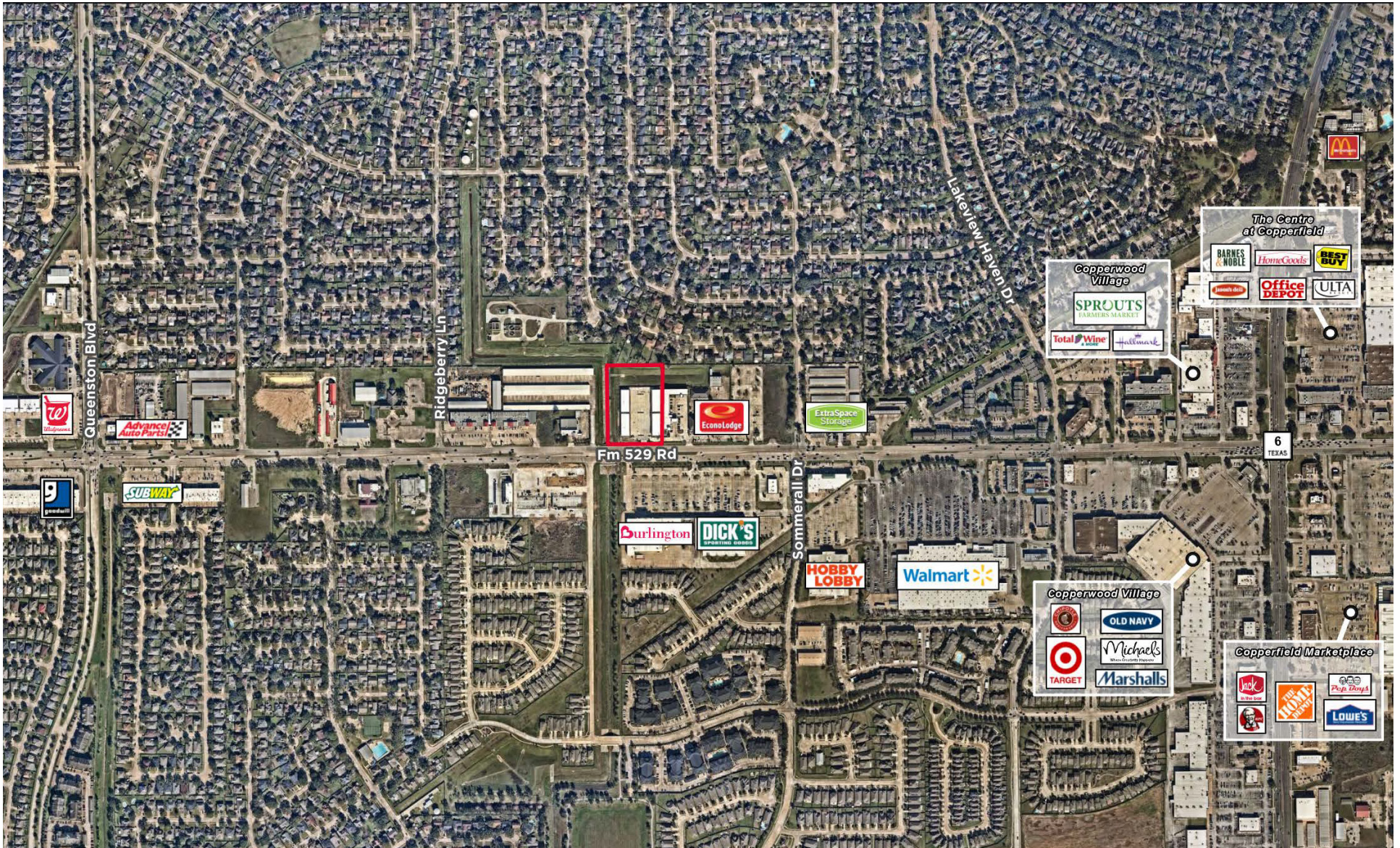
16332 FM  
529





16332 FM 529 HOUSTON, TX 77095

# AERIAL MAP



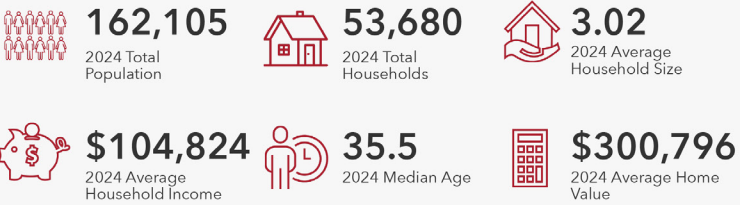


16332 FM 529 HOUSTON, TX 77095

# DEMOGRAPHICS

3 Miles

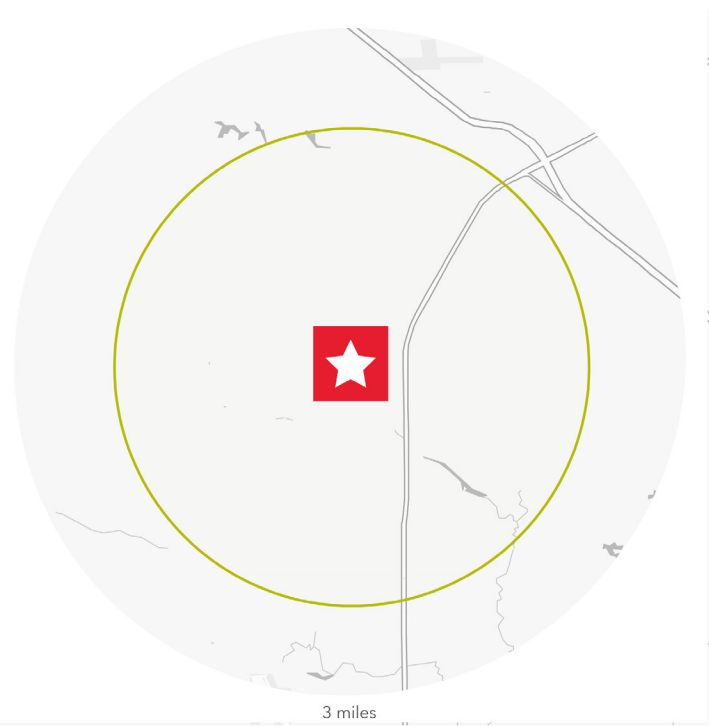
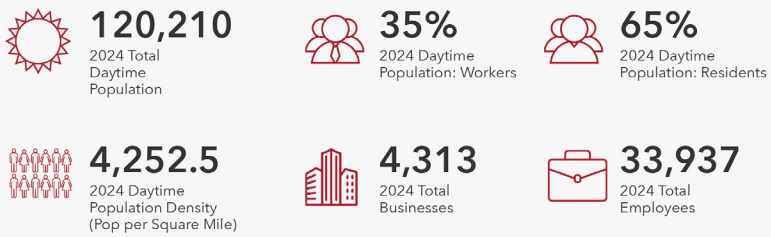
## HOUSEHOLDS



## POPULATION



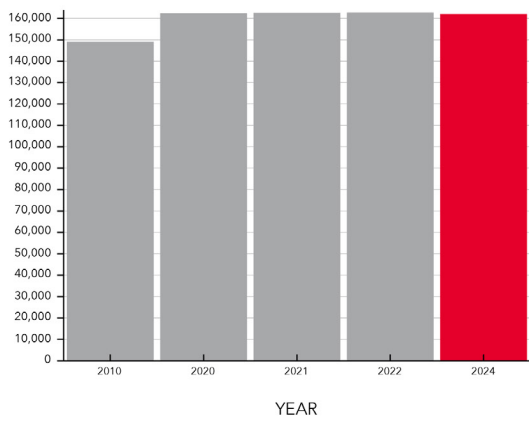
## EMPLOYMENT



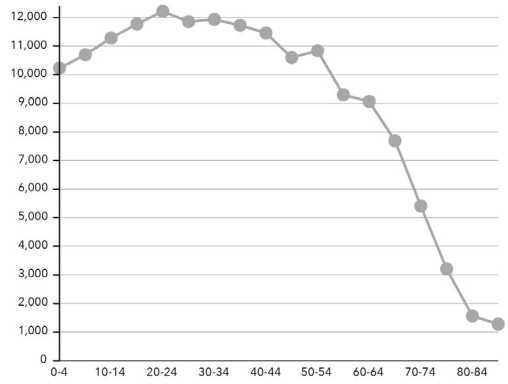
## EDUCATIONAL ATTAINMENT



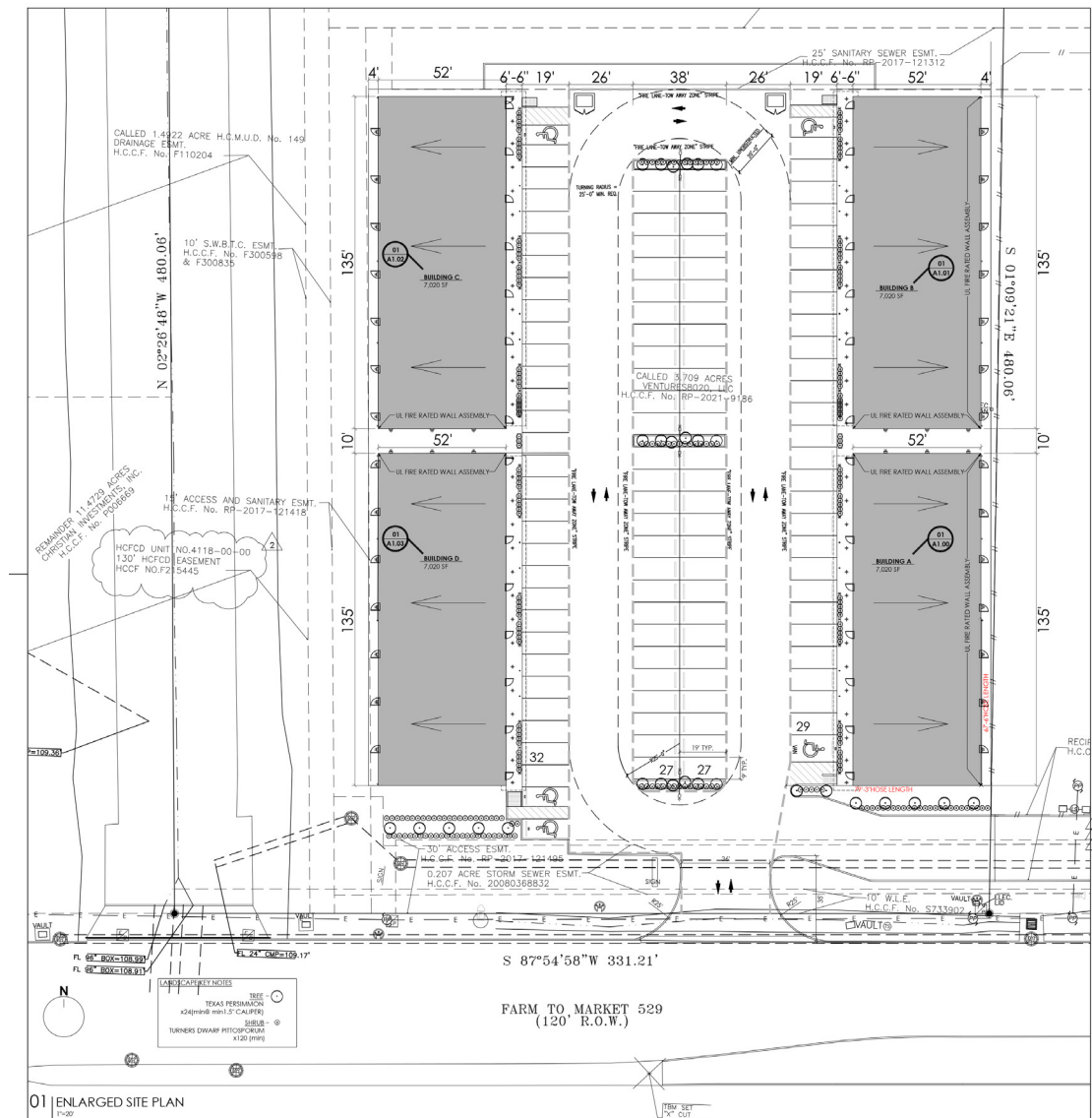
## POPULATION TIME SERIES 2010-2024



## POPULATION BY AGE GROUP



# SITE PLAN



## FOR MORE INFORMATION:

### **DANIEL WANG**

Director

+1 713 260 0217

[Daniel.Wang4@cushwake.com](mailto:Daniel.Wang4@cushwake.com)

### **MICHAEL BURGOWER**

Associate

+1 713 331 1747

[michael.burgower@cushwake.com](mailto:michael.burgower@cushwake.com)

[cushmanwakefield.com](http://cushmanwakefield.com)



©2025 Cushman & Wakefield. All rights reserved. The information contained in this communication is strictly confidential. This information has been obtained from sources believed to be reliable but has not been verified. NO WARRANTY OR REPRESENTATION, EXPRESS OR IMPLIED, IS MADE AS TO THE CONDITION OF THE PROPERTY (OR PROPERTIES) REFERENCED HEREIN OR AS TO THE ACCURACY OR COMPLETENESS OF THE INFORMATION CONTAINED HEREIN, AND SAME IS SUBMITTED SUBJECT TO ERRORS, OMISSIONS, CHANGE OF PRICE, RENTAL OR OTHER CONDITIONS, WITHDRAWAL WITHOUT NOTICE, AND TO ANY SPECIAL LISTING CONDITIONS IMPOSED BY THE PROPERTY OWNER(S). ANY PROJECTIONS, OPINIONS OR ESTIMATES ARE SUBJECT TO UNCERTAINTY AND DO NOT SIGNIFY CURRENT OR FUTURE PROPERTY PERFORMANCE.

