



Colliers



310 East 4500 South
Murray, Utah 84107

For Lease

\$21.50 SF, Full Service

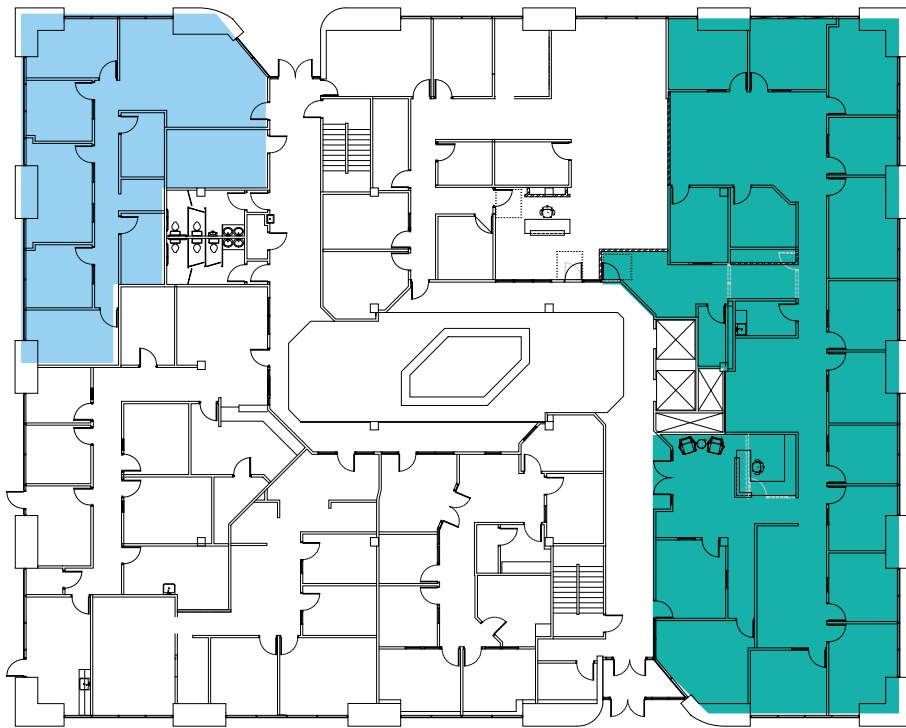
Derek Sawaya

Associate Vice President
+1 801 947 8341
derek.sawaya@colliers.com



Property Information

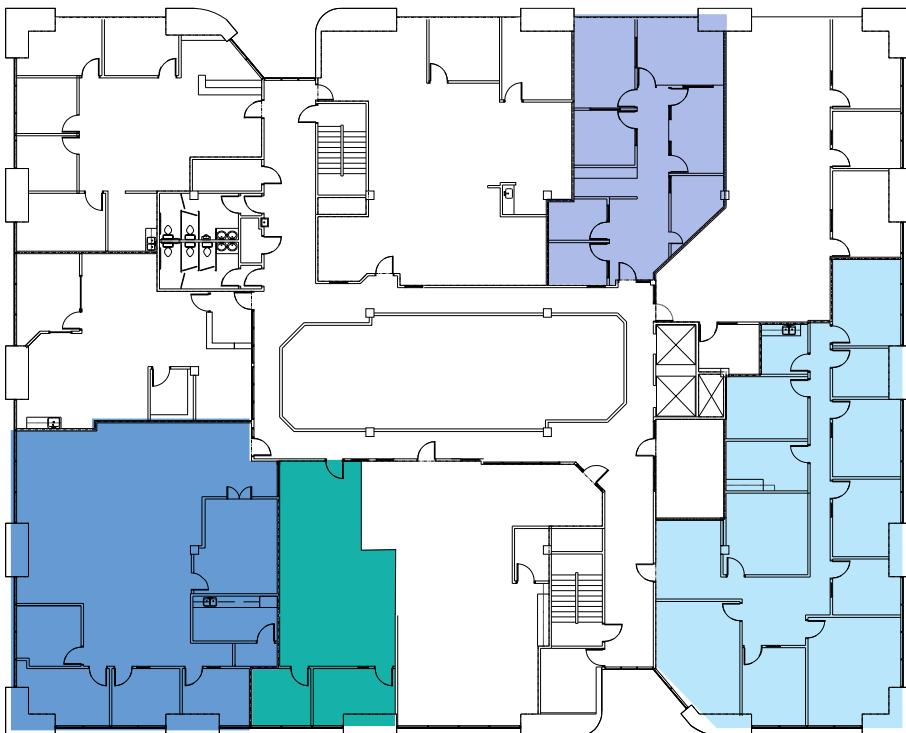
- \$1 million in building upgrades recently completed
- Three minutes to I-15 freeway
- 20 minutes from anywhere in Salt Lake County
- Fiber available through Utopia, CenturyLink, Integra
- 4/1,000 free on-site parking
- Panoramic mountain views

Floor Plans




1st Floor

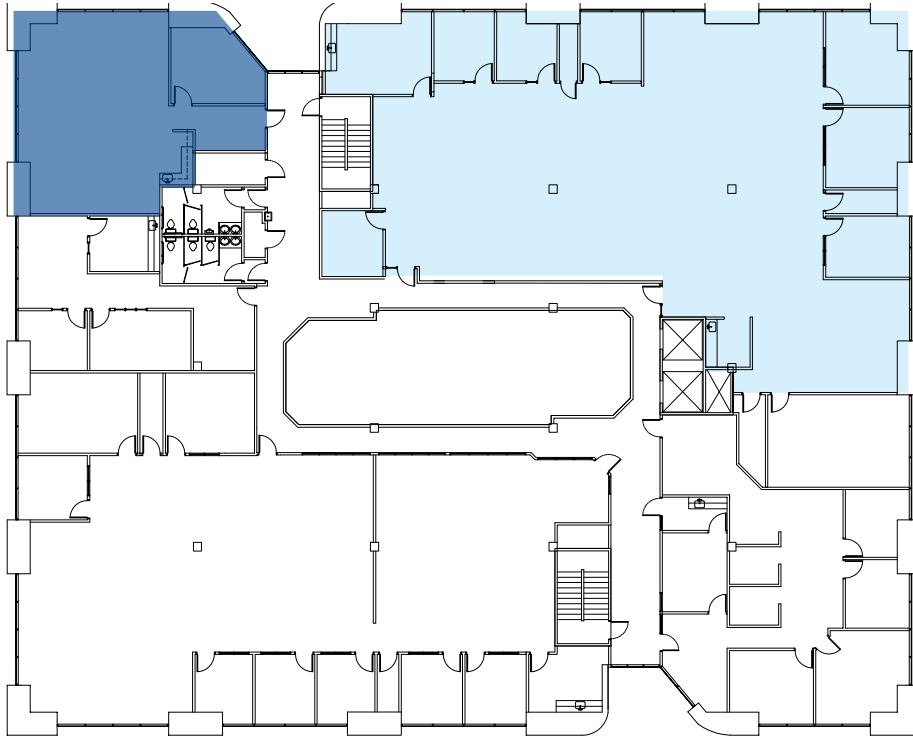
-  Suite 100 - 6,150 RSF
-  Suite 108 - 2,139 RSF



2nd Floor

-  Suite 200 - 2,907 RSF
-  Suite 230 - 1,474 RSF
-  Suite 240 - 3,233 RSF
-  Suite 260 - 1,167 RSF

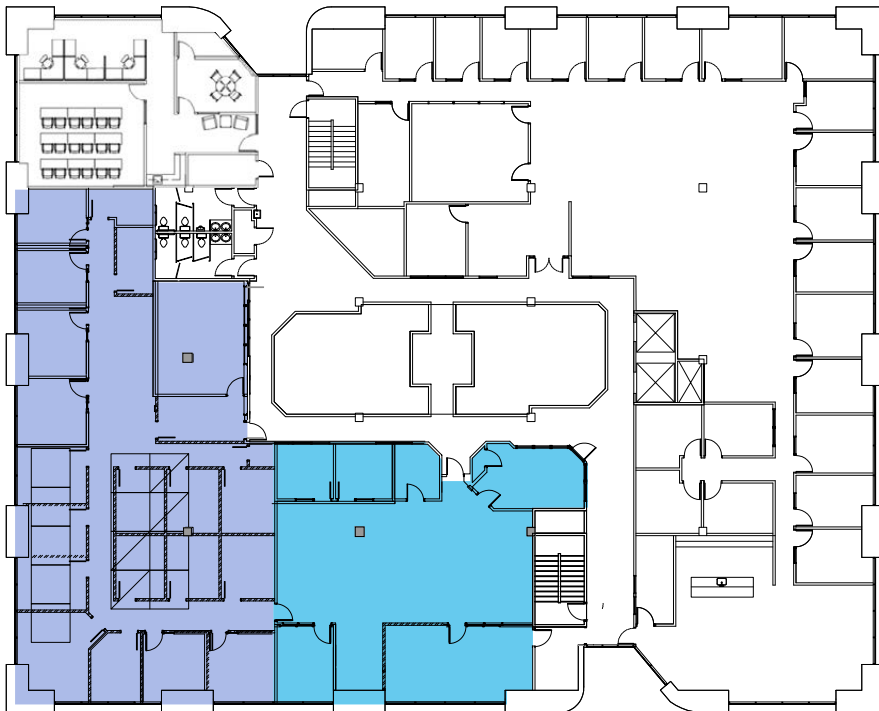
Floor Plans



3rd Floor

 Suite 300 - 6,775 RSF

 Suite 340 - 1,825 RSF

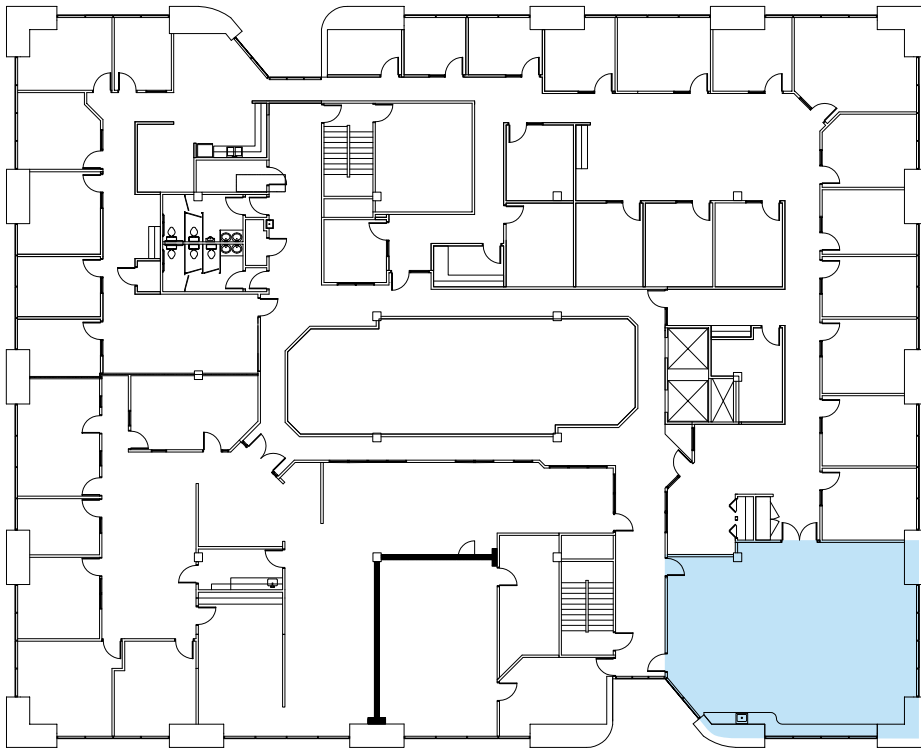


4th Floor

 Suite 405 - 2,852 RSF

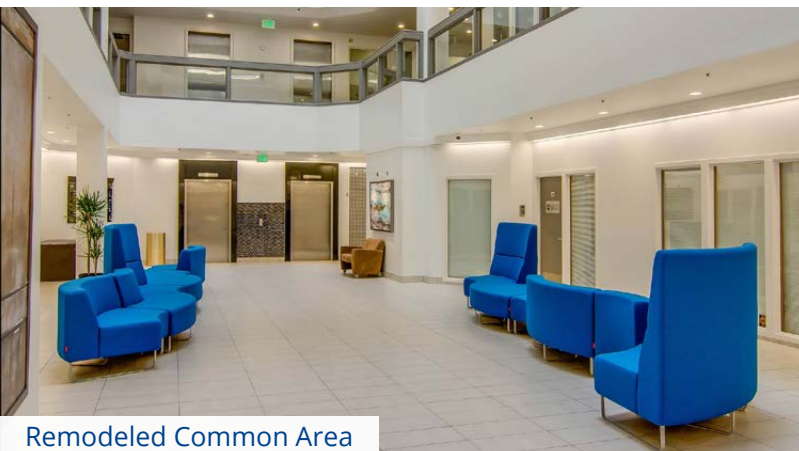
 Suite 410 - 4,663 RSF

Floor Plans



6th Floor

 Suite 610 - 1,685 RSF



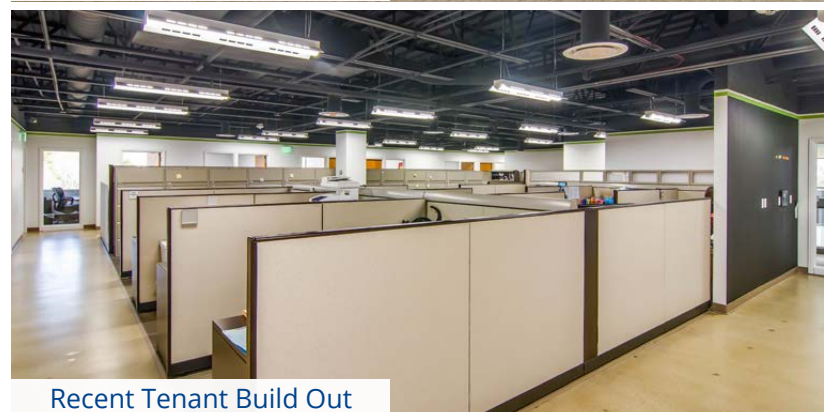
Remodeled Common Area



Recent Tenant Build Out



Typical Turn Key Build Out



Recent Tenant Build Out



Colliers
 111 S. Main St., Suite 2200
 Salt Lake City, UT 84111
 Main: +1 801 947 8300
 colliers.com

Derek Sawaya
 Associate Vice President
 +1 801 947 8341
 derek.sawaya@colliers.com

This document has been prepared by Colliers International for advertising and general information only. Colliers International makes no guarantees, representations or warranties of any kind, expressed or implied, regarding the information including, but not limited to, warranties of content, accuracy and reliability. Any interested party should undertake their own inquiries as to the accuracy of the information. Colliers International excludes unequivocally all inferred or implied terms, conditions and warranties arising out of this document and excludes all liability for loss and damages arising there from. This publication is the copyrighted property of Colliers International and/or its licensor(s). ©2024. All rights reserved.