

978

KAISER ROAD
NAPA, CALIFORNIA



±9,800 SF WAREHOUSE BUILDING FOR SALE OR LEASE

PROPERTY OVERVIEW

- ±9,800 SF Warehouse Building
- ±2,500 SF Office
- ±0.5 Acres
- 4 Drive-in Doors
- 200 Amps
- 14-16' Clear Height
- Sprinklered
- Fenced Yard
- Divisible

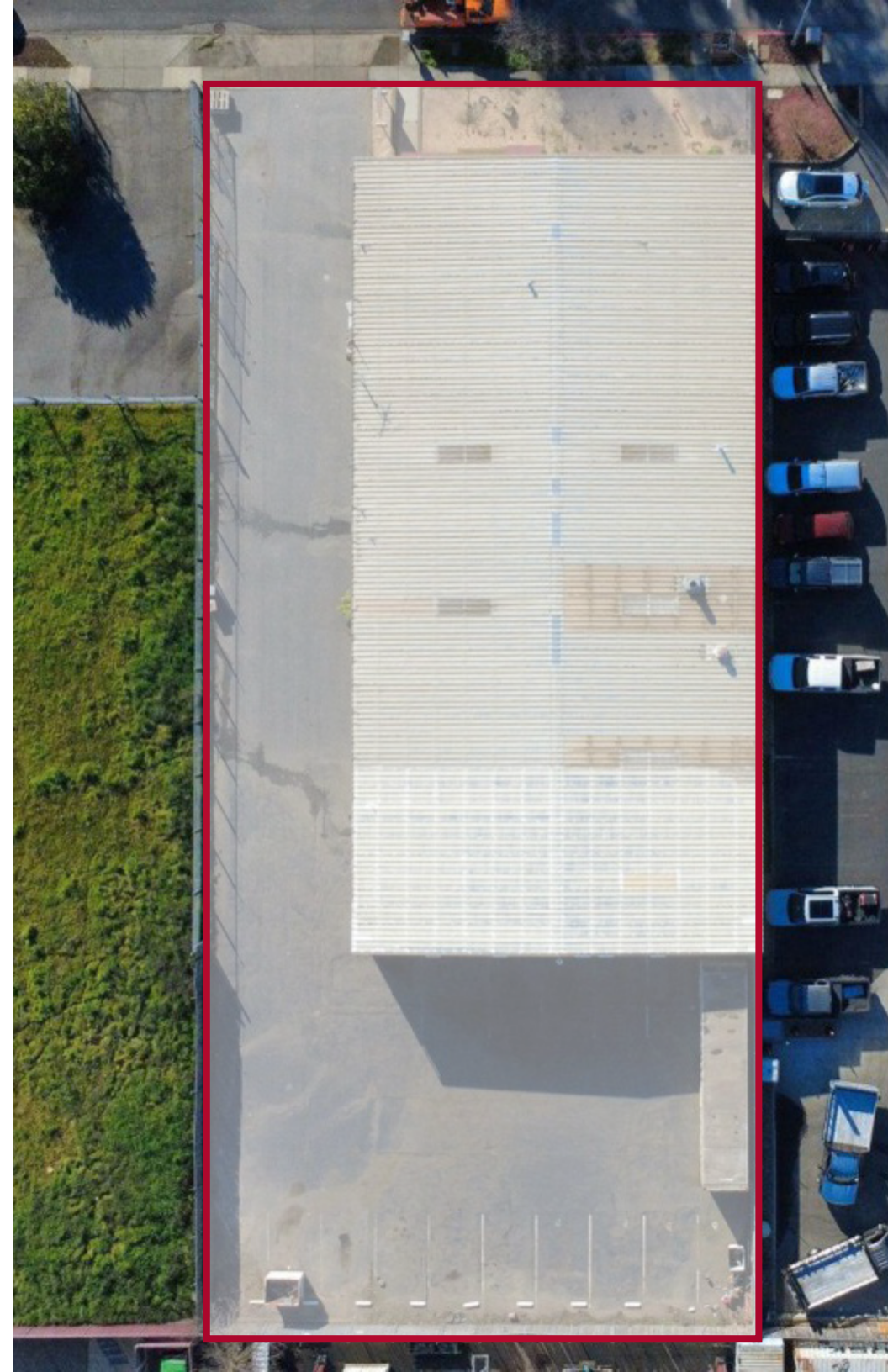
ECONOMIC DATA:

- Sale Price: \$2,700,000 (\$275/SF)
- Lease Rate: \$1.65/SF IG

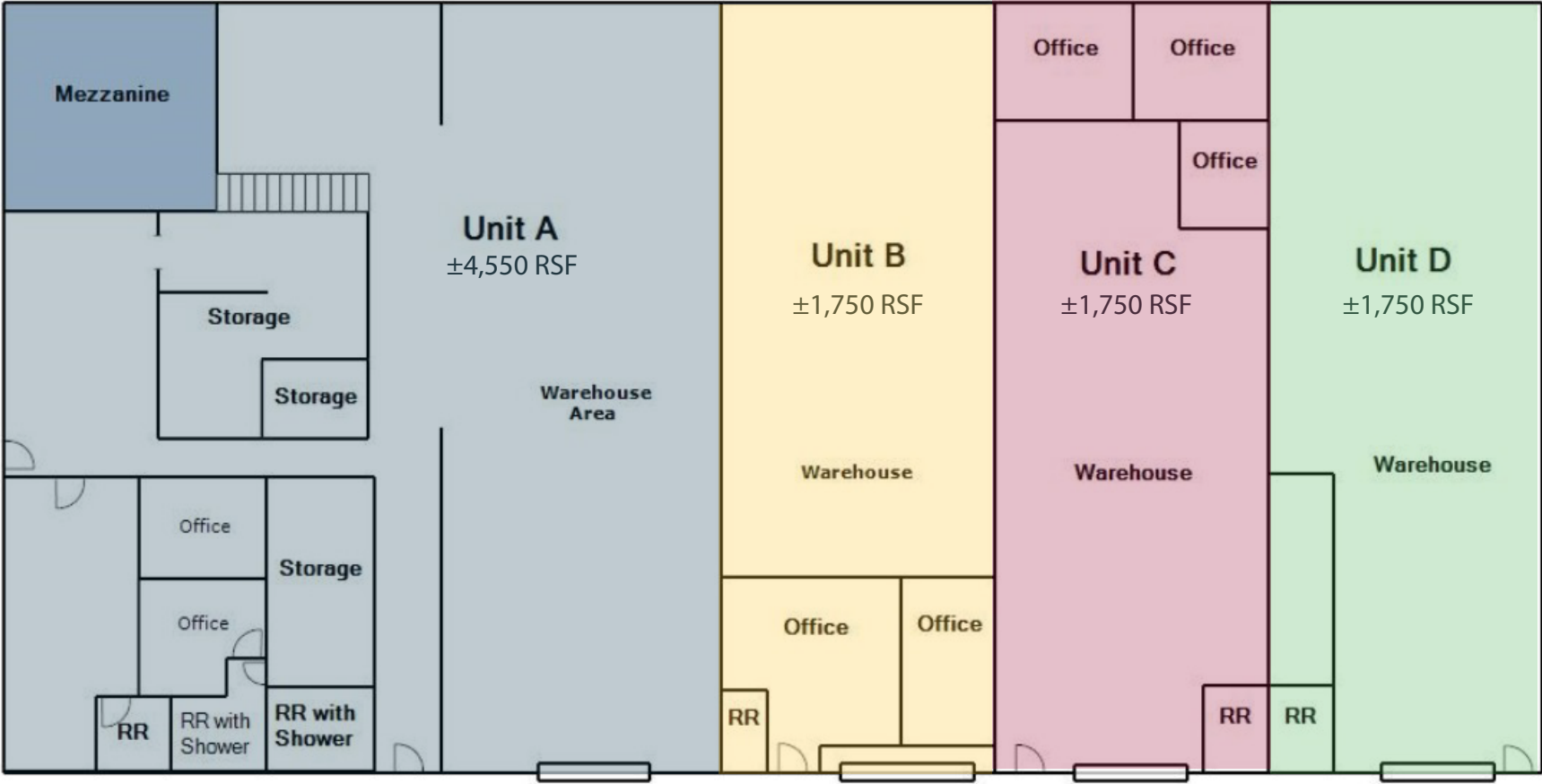
PRESENTED BY

ALEX PECK
925-239-1414
apeck@lee-associates.com
LIC# 01981426

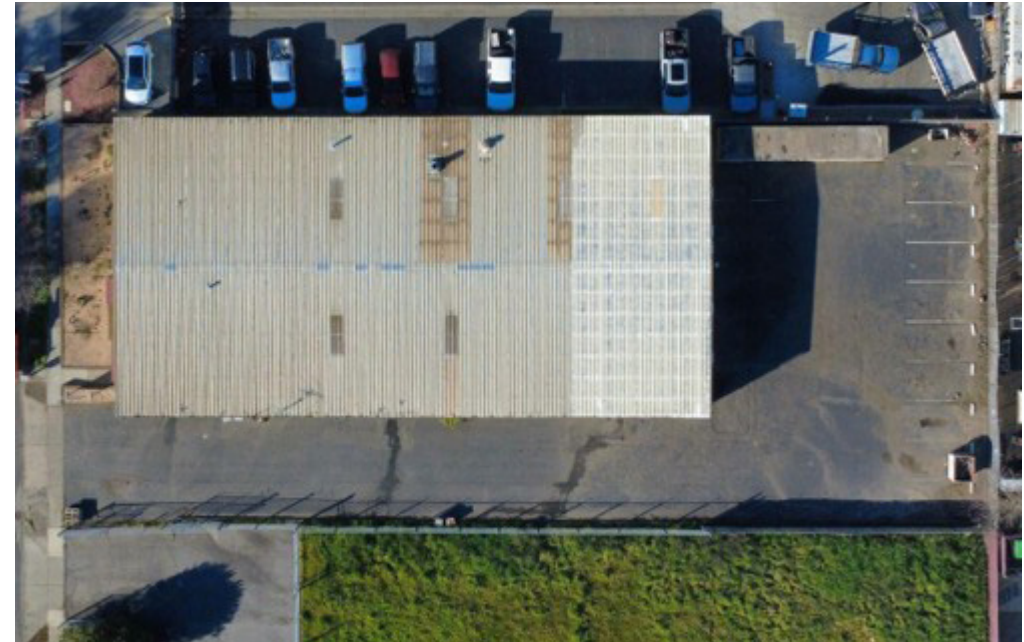
TANNER MANDELARIS
925-239-1421
tmandelaris@lee-associates.com
LIC# 02224565

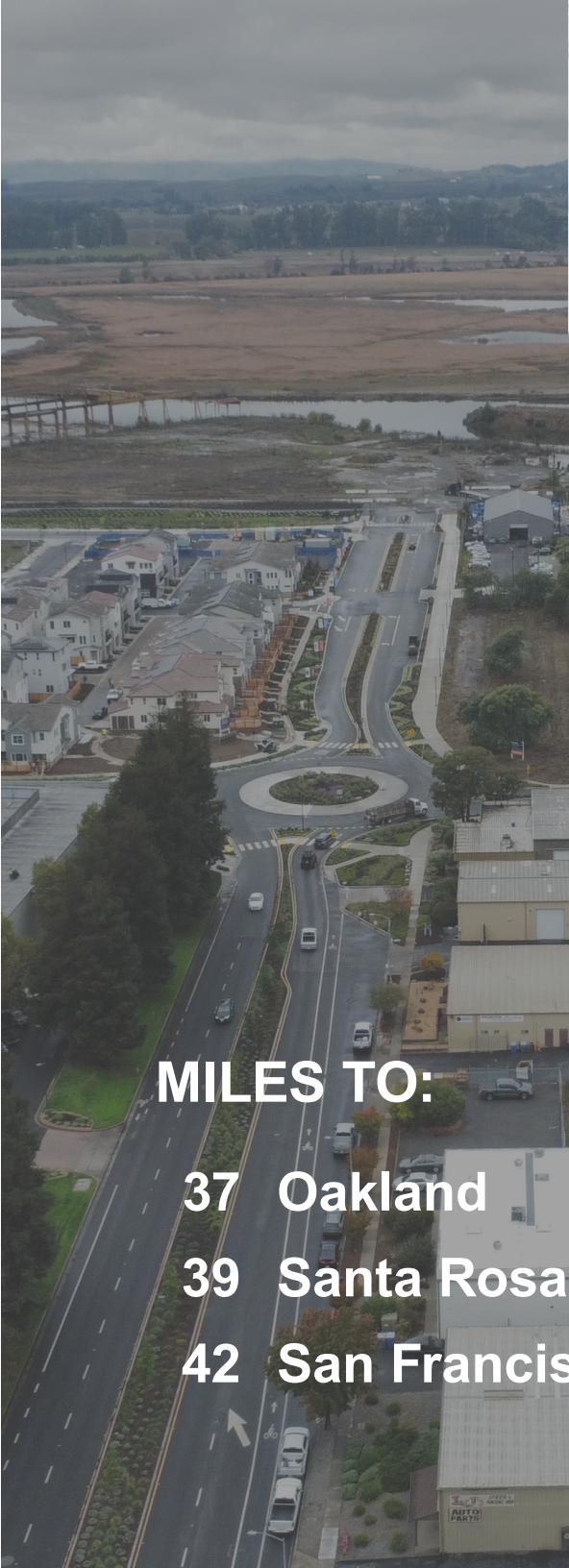


FLOOR PLAN

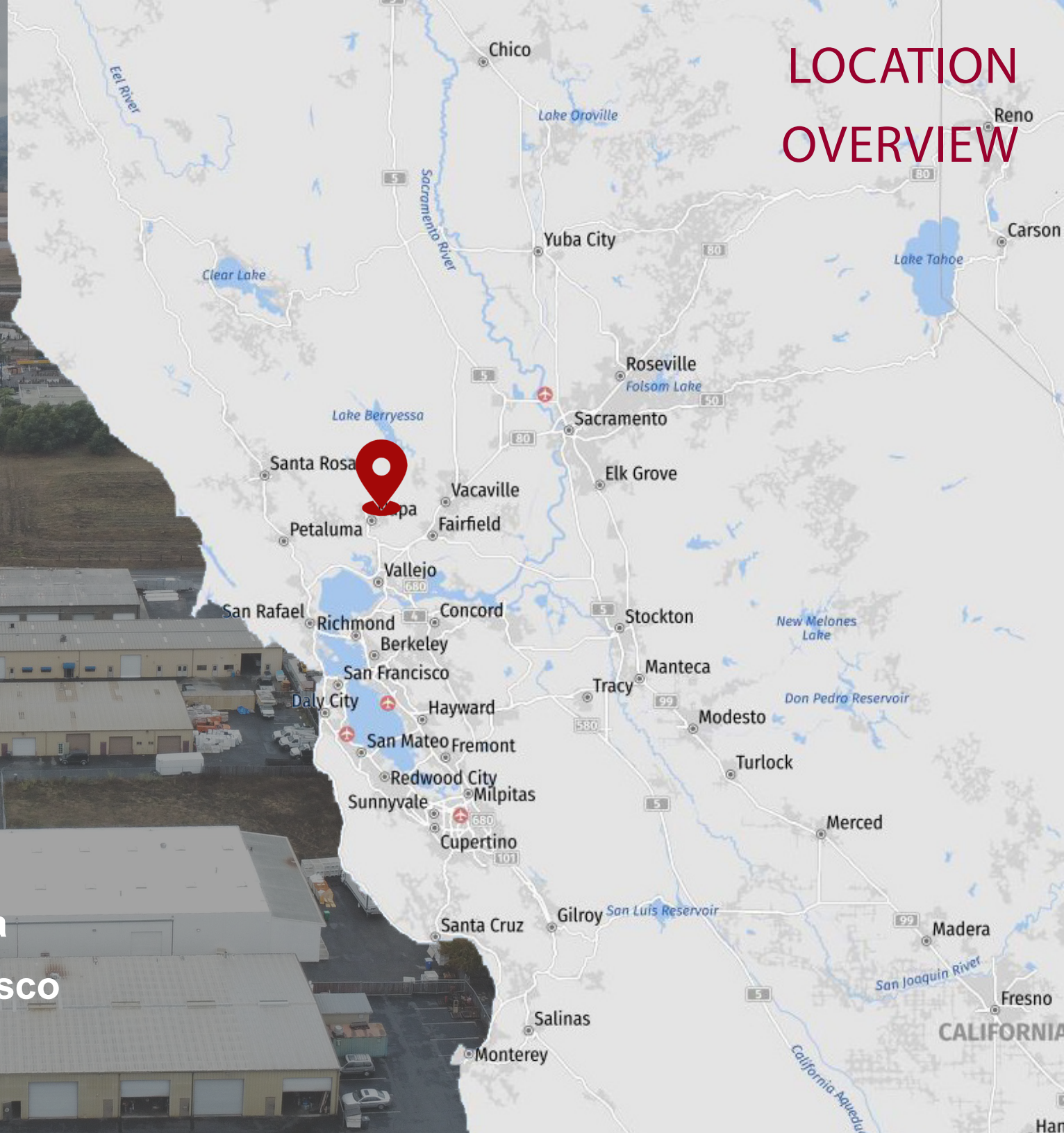


PROPERTY PHOTOS





LOCATION OVERVIEW



MILES TO:

37 Oakland

39 Santa Rosa

42 San Francisco

NEARBY AMENITIES

DOWNTOWN
NAPA

978

KAISER BLVD

- 6
- 5
- 3
- 4
- 2

DEVELOPMENT

1. **Subject Project** - 978 Kaiser Rd, Napa
2. **Costco Napa** - 154,000 SF warehouse plus fuel open
3. **RiverSound Homes** - about 945 at buildout phases under construction
4. **RiverSound Hotel** - 150 rooms planned
5. **RiverSound Neighborhood Retail** - about 40,000 SF planned
6. **CMC Rebar steel supplier**

LOCAL DEMOGRAPHICS

2
MILES

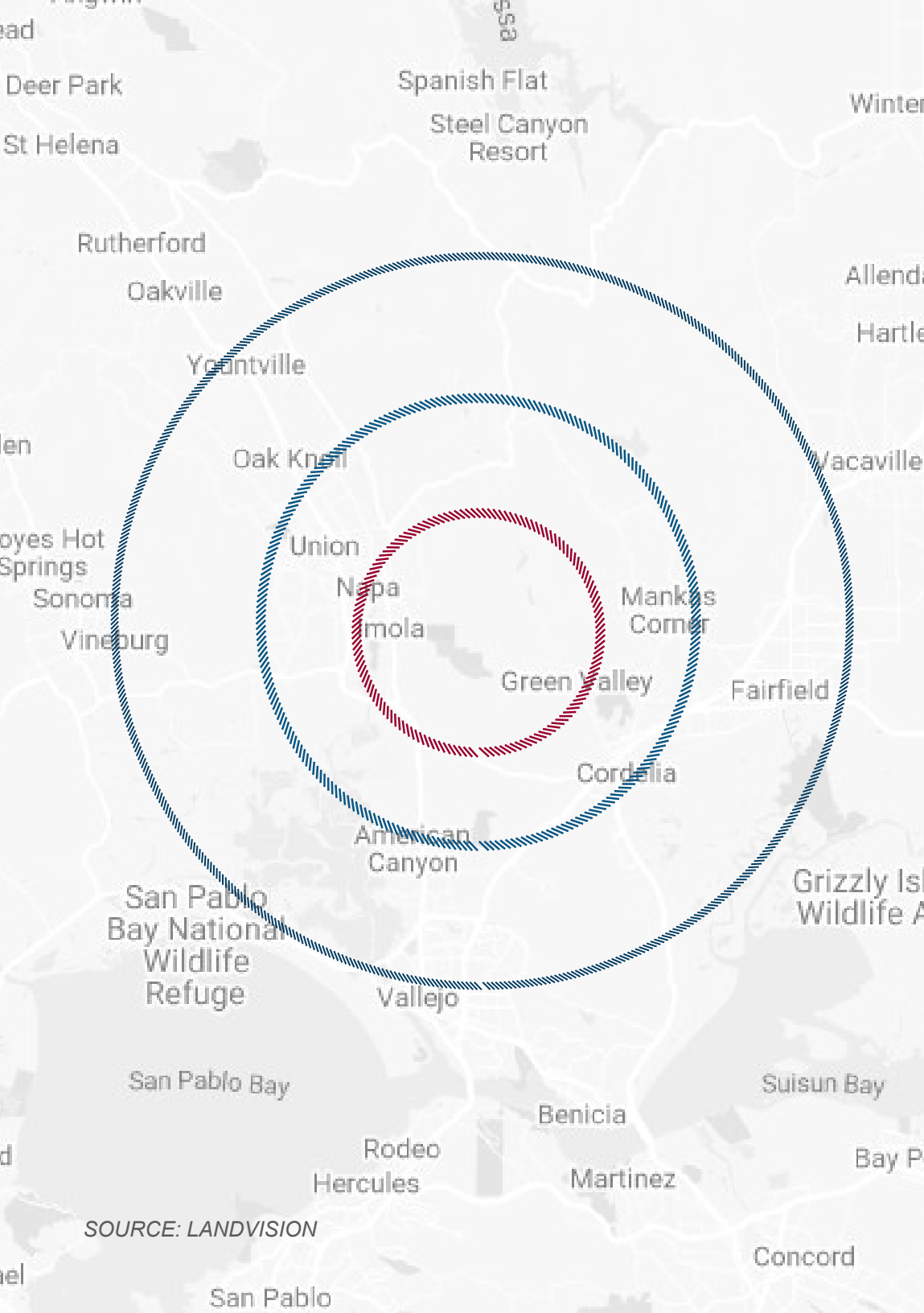
7,945	Population
\$109,162	Avg. Household Income
2,783	Households
127	Businesses
1,035	Employees

5
MILES

64,755	Population
\$121,795	Avg. Household Income
23,820	Households
2,061	Businesses
23,266	Employees

10
MILES

194,244	Population
\$134,655	Avg. Household Income
68,990	Households
5,797	Businesses
75,047	Employees



SOURCE: LANDVISION

978

KAISER ROAD
NAPA, CALIFORNIA

PRESENTED BY

ALEX PECK
925-239-1414
apeck@lee-associates.com
LIC# 01981426

TANNER MANDELARIS
925-239-1421
tmandelaris@lee-associates.com
LIC# 02224565