

LEASE

NORTHVIEW PLAZA

751 North Ferdon Boulevard Crestview, FL 32536



PROPERTY DESCRIPTION

Single Industrial Unit Available in Northview Plaza, located on the North end of Crestview's busy SR 85/ Ferdon Blvd. with AADT of 29,500. The 61,655 square foot plaza includes Anchor Tenants Advantage Dental, Dollar General, Azteca Restaurant and Goodwill. The Plaza is located on a signalized corner with 6 entrances/exits, 196 Parking Spaces, and Pylon Sign. Total Population within a 5-mile radius is 52,583 with a Median Household Income of \$95,045.

LOCATION DESCRIPTION

Surrounding National and Regional retailers include Publix, Wendys Taco Bell, Sonic, McDonalds, Ace Hardware, Winn Dixie, CVS, Burger King, Papa Johns, and more. The City of Crestview's High School, Library, Community Center and Local Parks are also within a one-mile radius.

PROPERTY HIGHLIGHTS

- AADT 29,500. Pylon Sign. 17 Ft Ceiling Height. 196 Parking Spaces.

Melissa Glyptis Simpson
(850) 733-6532

SPACES

759B N. Ferdon Blvd.

LEASE RATE

\$10.00 SF/yr

SPACE SIZE

1,390 SF

DEMOGRAPHICS

Total Population

6,328

28,490

52,746

Average HH Income

\$63,731

\$84,615

\$95,045

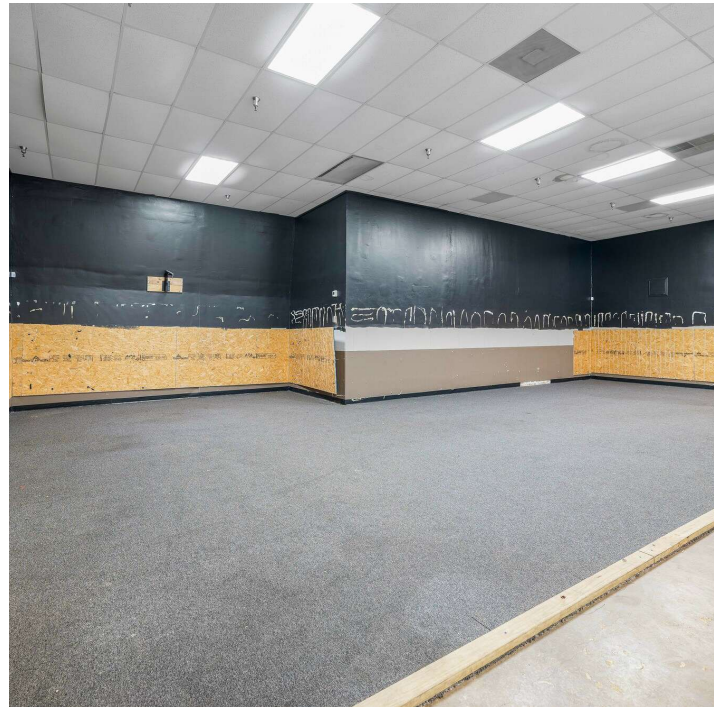
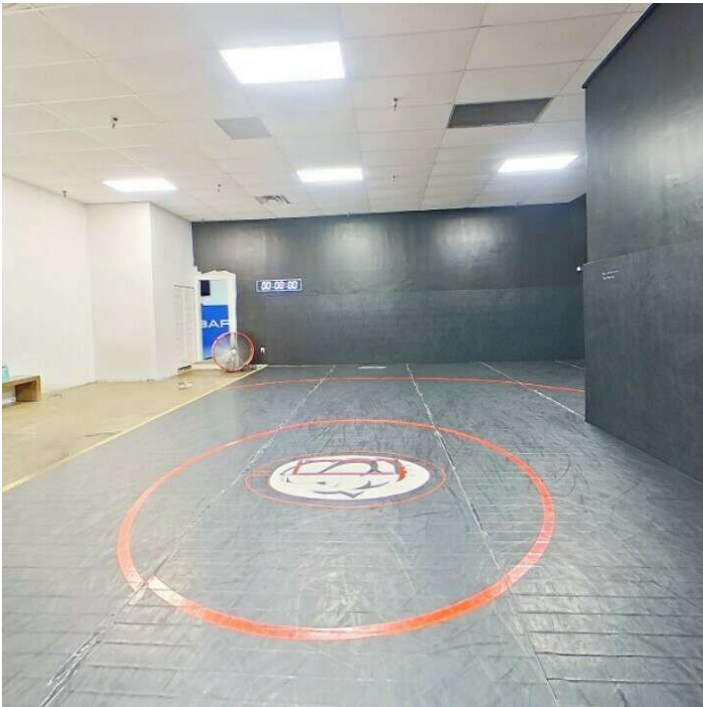
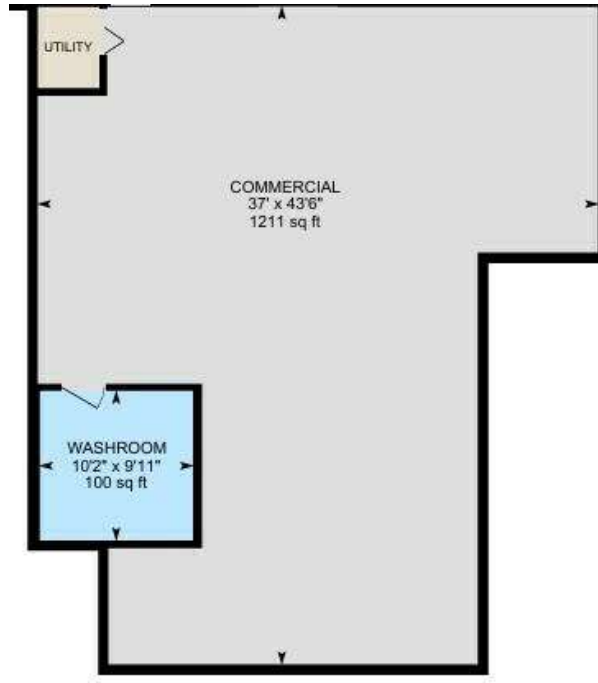


COLDWELL BANKER
COMMERCIAL
REALTY

LEASE

NORTHVIEW PLAZA

759B North Ferdon Boulevard Crestview, FL 32536



Melissa Glyptis Simpson
(850) 733-6532



COLDWELL BANKER
COMMERCIAL
REALTY

LEASE

NORTHVIEW PLAZA

751 North Ferdon Boulevard Crestview, FL 32536



Melissa Glyptis Simpson
(850) 733-6532

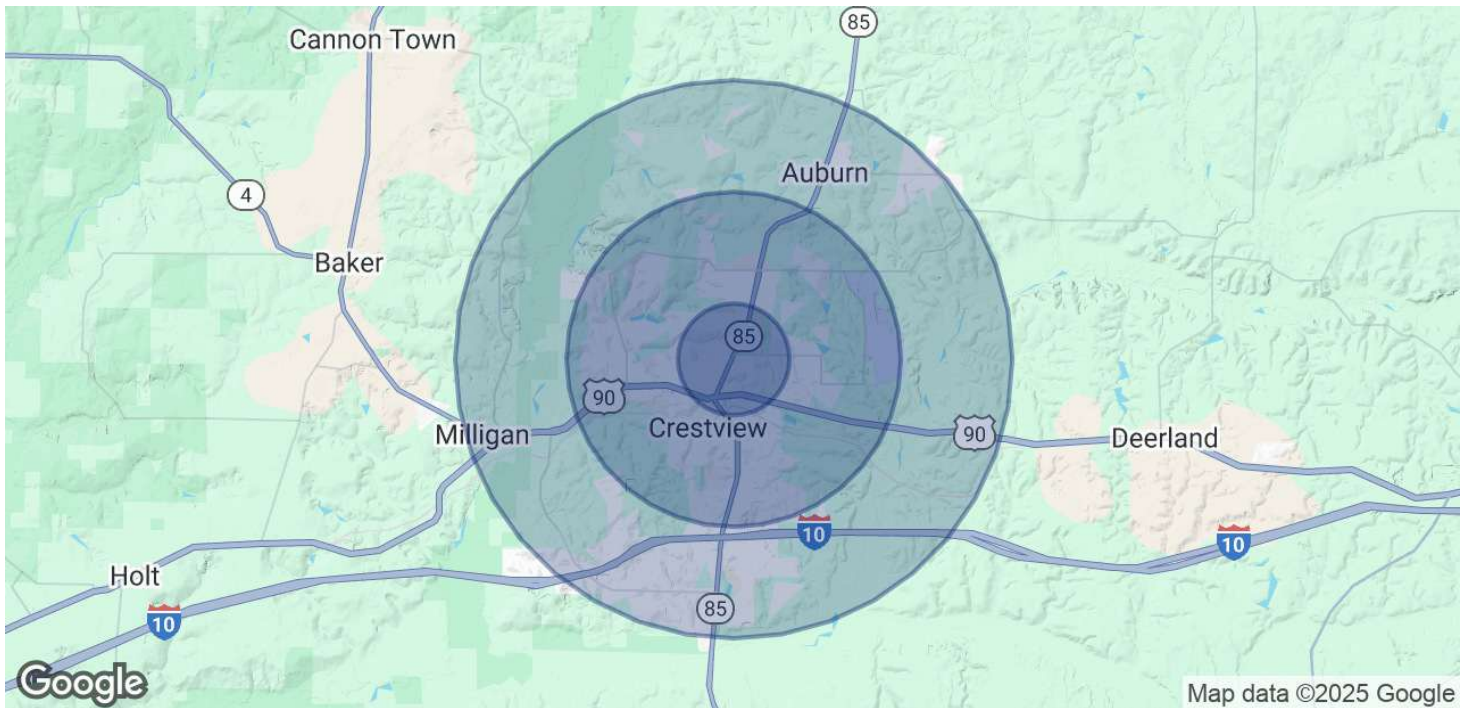


COLDWELL BANKER
COMMERCIAL
REALTY

LEASE

NORTHVIEW PLAZA

751 North Ferdon Boulevard Crestview, FL 32536



POPULATION	1 MILE	3 MILES	5 MILES
Total Population	6,328	28,490	52,746
Average Age	38	38	37
Average Age (Male)	36	37	36
Average Age (Female)	39	39	38

HOUSEHOLDS & INCOME	1 MILE	3 MILES	5 MILES
Total Households	2,186	10,336	19,043
# of Persons per HH	2.9	2.8	2.8
Average HH Income	\$63,731	\$84,615	\$95,045
Average House Value	\$237,027	\$298,274	\$312,401

Demographics data derived from AlphaMap

Melissa Glyptis Simpson
(850) 733-6532



COLDWELL BANKER
COMMERCIAL
REALTY