

±4,604 SF Office/Flex Space

1455 West Park Avenue, Unit 'A', Redlands CA 92373



INLAND EMPIRE
COMMERCIAL
REAL ESTATE

AVAILABLE

PROPERTY FEATURES

- ✓ High-Visibility, High-Image Campus Setting
- ✓ Turnkey space with Glass-Partitioned Offices
- ✓ Large Reception, Conference Room
- ✓ High Ceilings, Private Restroom w/Shower
- ✓ Near Shopping, Restaurants & Other Amenities
- ✓ Close Proximity to 1-10 & 210 Fwy Access



ERIC HUTCHINS 909.255.1210

eric.hutchins@ie-commercial.com DRE #01515547

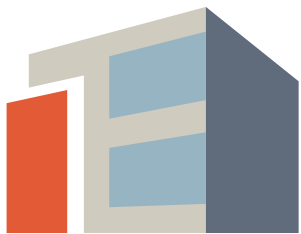
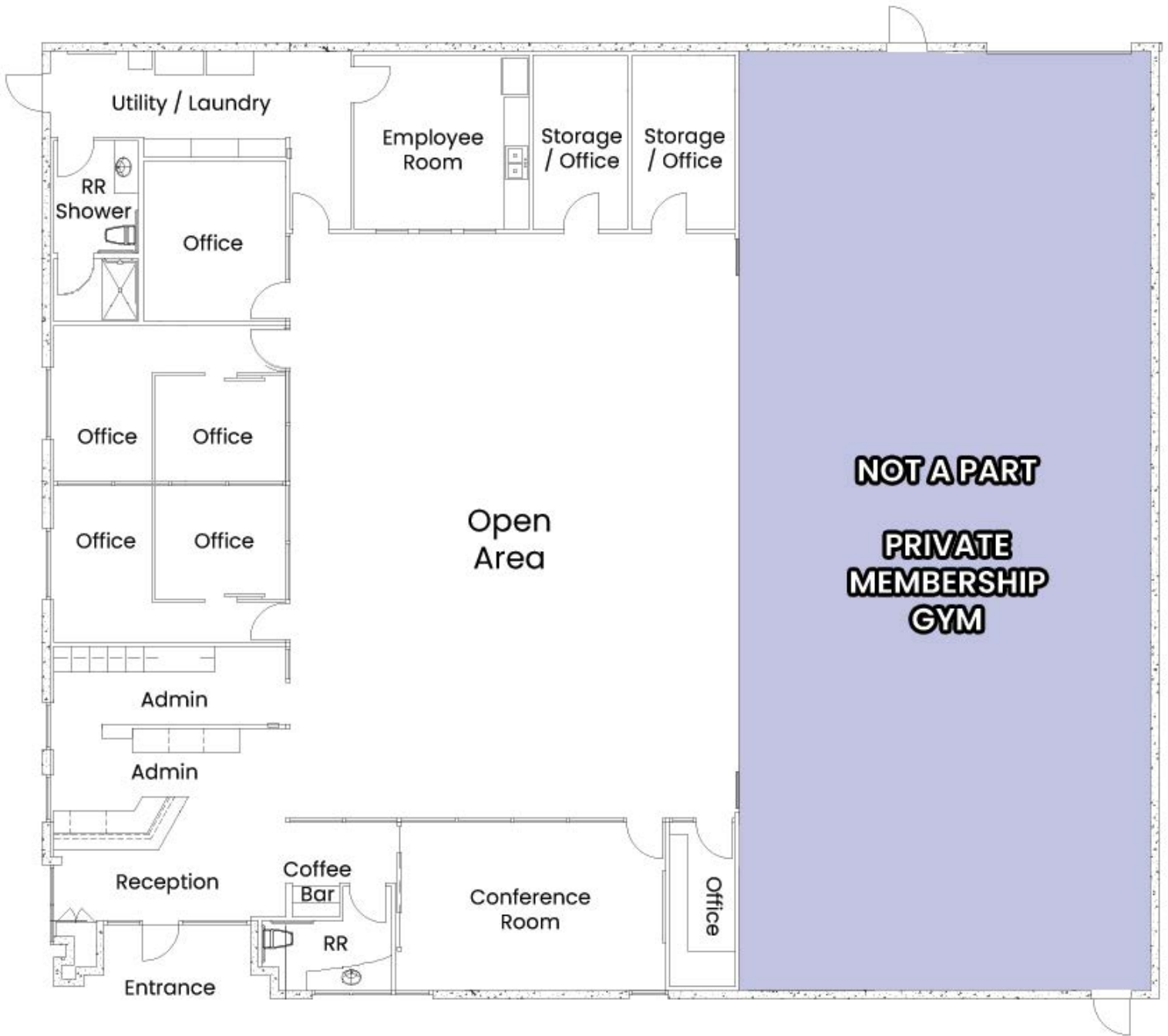
Inland Empire Commercial Real Estate, Inc.

1255 West Colton Avenue, Suite 525, Redlands CA 92373

DRE #01905051. This information supplied herein is from sources we deem reliable. It is provided without any representation, warranty, or guarantee, expressed or implied as to its accuracy. Prospective Buyer or Tenant should conduct an independent investigation and verification of all matters deemed to be material, including, but not limited to, statements of income and expenses. Consult your attorney, accountant, or other professional advisor.

±4,604 SF Office/Flex Space

1455 West Park Avenue, Unit 'A', Redlands CA 92373



INLAND EMPIRE
COMMERCIAL
REAL ESTATE

AVAILABLE

ERIC HUTCHINS 909.255.1210

eric.hutchins@ie-commercial.com DRE #01515547

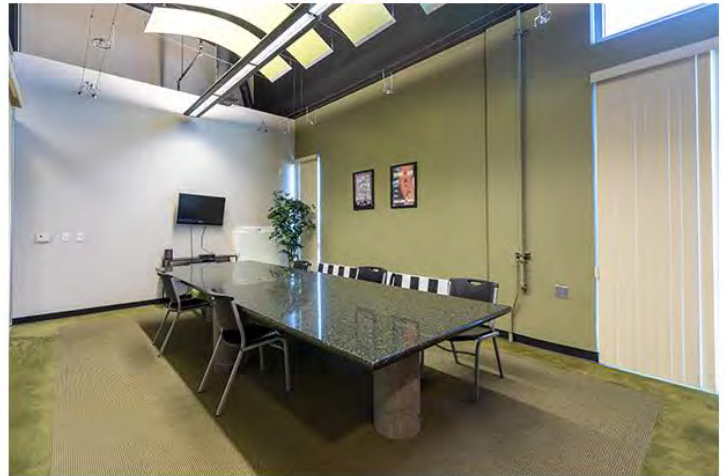
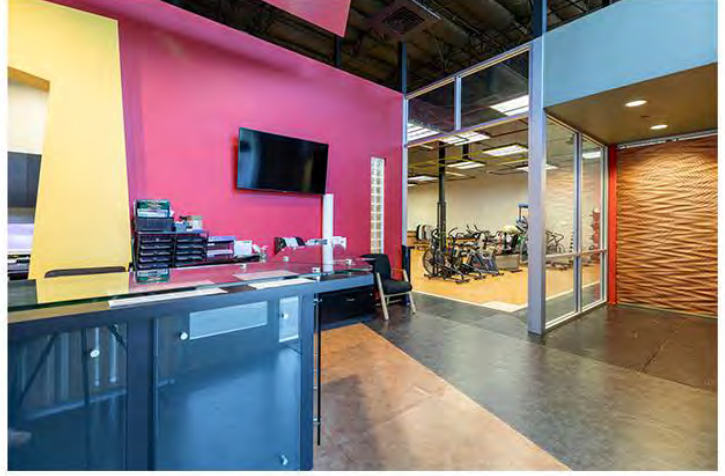
Inland Empire Commercial Real Estate, Inc.

1255 West Colton Avenue, Suite 525, Redlands CA 92373

DRE #01905051. This information supplied herein is from sources we deem reliable. It is provided without any representation, warranty, or guarantee, expressed or implied as to its accuracy. Prospective Buyer or Tenant should conduct an independent investigation and verification of all matters deemed to be material, including, but not limited to, statements of income and expenses. Consult your attorney, accountant, or other professional advisor.

±4,604 SF Office/Flex Space

1455 West Park Avenue, Unit 'A', Redlands CA 92373



INLAND EMPIRE
COMMERCIAL
REAL ESTATE

AVAILABLE

ERIC HUTCHINS 909.255.1210

eric.hutchins@ie-commercial.com DRE #01515547

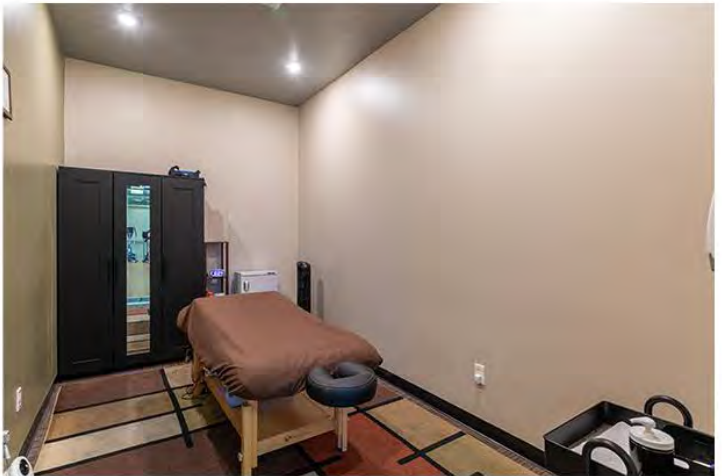
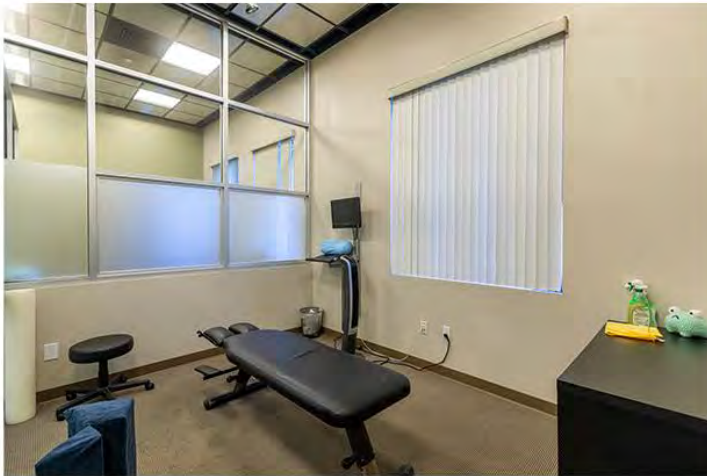
Inland Empire Commercial Real Estate, Inc.

1255 West Colton Avenue, Suite 525, Redlands CA 92373

DRE #01905051. This information supplied herein is from sources we deem reliable. It is provided without any representation, warranty, or guarantee, expressed or implied as to its accuracy. Prospective Buyer or Tenant should conduct an independent investigation and verification of all matters deemed to be material, including, but not limited to, statements of income and expenses. Consult your attorney, accountant, or other professional advisor.

±4,604 SF Office/Flex Space

1455 West Park Avenue, Unit 'A', Redlands CA 92373



INLAND EMPIRE
COMMERCIAL
REAL ESTATE

AVAILABLE

ERIC HUTCHINS 909.255.1210

eric.hutchins@ie-commercial.com DRE #01515547

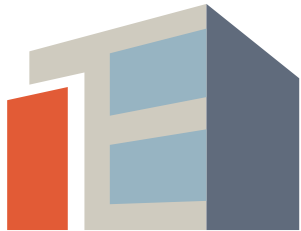
Inland Empire Commercial Real Estate, Inc.

1255 West Colton Avenue, Suite 525, Redlands CA 92373

DRE #01905051. This information supplied herein is from sources we deem reliable. It is provided without any representation, warranty, or guarantee, expressed or implied as to its accuracy. Prospective Buyer or Tenant should conduct an independent investigation and verification of all matters deemed to be material, including, but not limited to, statements of income and expenses. Consult your attorney, accountant, or other professional advisor.

±4,604 SF Office/Flex Space

1455 West Park Avenue, Unit 'A', Redlands CA 92373



INLAND EMPIRE
COMMERCIAL
REAL ESTATE

AVAILABLE

ERIC HUTCHINS 909.255.1210

eric.hutchins@ie-commercial.com DRE #01515547

Inland Empire Commercial Real Estate, Inc.

1255 West Colton Avenue, Suite 525, Redlands CA 92373

DRE #01905051. This information supplied herein is from sources we deem reliable. It is provided without any representation, warranty, or guarantee, expressed or implied as to its accuracy. Prospective Buyer or Tenant should conduct an independent investigation and verification of all matters deemed to be material, including, but not limited to, statements of income and expenses. Consult your attorney, accountant, or other professional advisor.