

DETAILS:

Unit 6C: **3,500 RSF** | Ceiling Height: **12'** | Term: **Negotiable**

Possession: **Arranged** | Asking Rent: **Please Inquire**

NOTES:

- Brand-new attended lobby
- 60' of oversized windows w/open city views
- 12' exposed ceilings
- Two (2) executive offices, one (1) breakout room and a 12-person conference room
- Tenant-controlled A/C
- Private ADA compliant restroom
- Pantry
- Common roof deck with 360-degree views

145

HUDSON STREET

Southwest Corner
of Hubert Street

Previous Installation



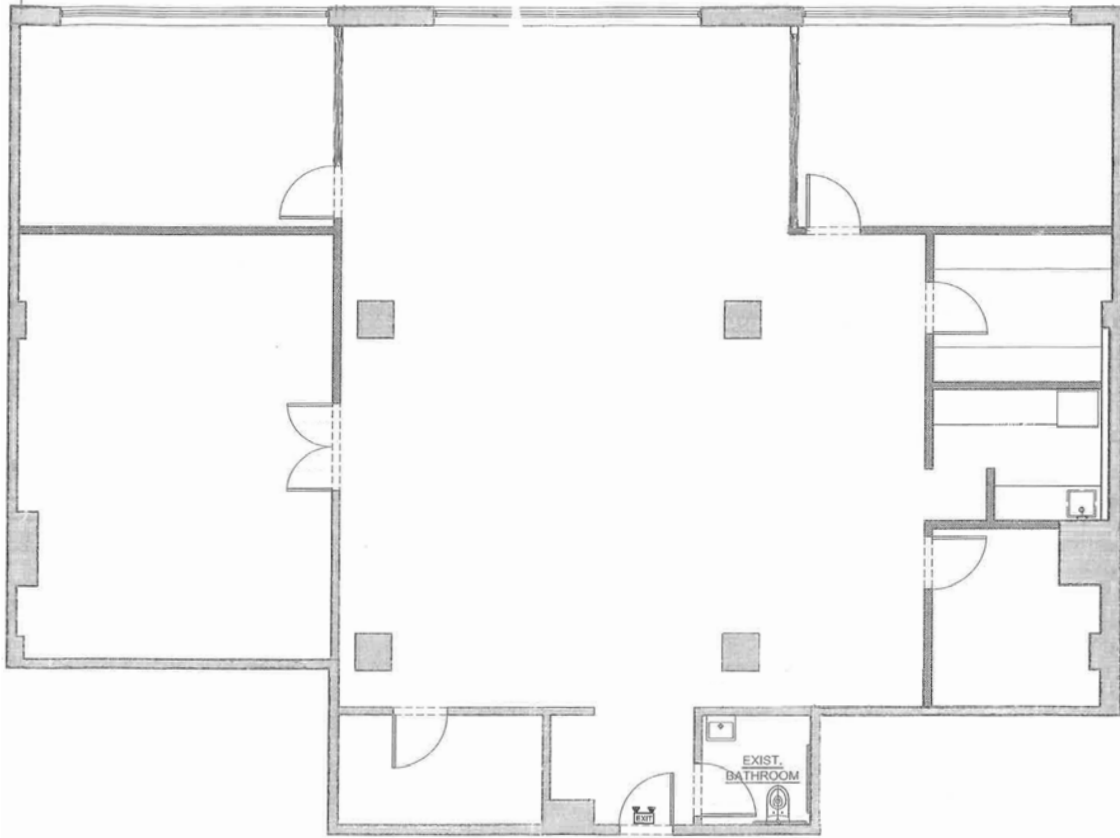
Existing Installation



Rooftop View



Previous Installation



PLEASE CONTACT:

James Costello | 646.599.2391 | james@sinvin.com

 **SINVIN**
COMMERCIAL REAL ESTATE & ADVISORY